



RETURN ADDRESS

H.O.A.C.G.A.
Eleanor Mochel
14611 Eby Street
Overland Park, KS 66221

PRESORTED
FIRST CLASS MAIL
U.S. POSTAGE PAID
KANSAS CITY, MO
PERMIT NO. 1016

**December
2001**

**Please Send
In Blue
Millersburg
Survey Form.**

HOACGA

Heart of America Carnival Glass Assoc. Inc.

Heart of America Carnival Glass Association

(Since 1973)

President **Robert Grissom**
7517 Evanston
Raytown, MO 64138
phone: (816) 356-5320
e-mail: bobimocg@aol.com

Vice-President **Gene Cox**
PO Box 42
Blue Mound, KS 66010
phone: (913) 756-2323

Treasurer **Cliff Ball**
572 W. Park St.
Olathe, KS 66061
phone: (913) 782-0415

Secretary **Ann McMorris**
PO Box 4361
Topeka, KS 66604-0361
phone: (785) 478-9004
e-mail: mcmorris@woodsland.com

*Send New & Renewal
Memberships, Address Changes,
Order for Educ. Mail, and Sows.
All checks payable to HOACGA*

Bulletin Secretary **Eleanor Mochel**
14611 Eby Street
Overland Park, KS 66221
phone: (913) 685-2182
fax: (913) 685-2182 (call before faxing)
e-mail: cmochel@yahoo.com

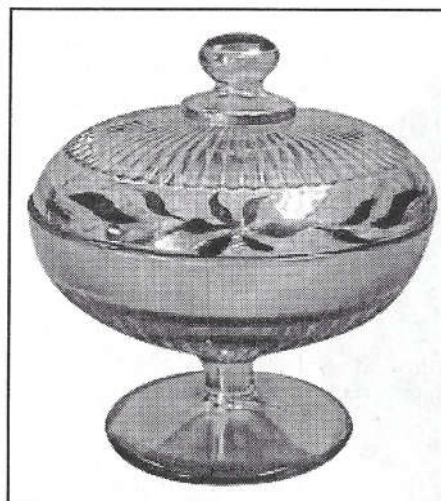
*Send Ads & Articles for Bulletin
by 28th of month.*

ATTENTION ALL MEMBERS

Will you please check your address label and make certain it reads exactly as it should. Also if you have an email address please send that to the secretary, Ann McMorris, address above. Thanks!

Adam's Rib

By Alan & Lorraine Pickup • alpickup@msn.com



Dugan/Diamond Glass Company introduced a new line of glass in 1925 called at that time number 900. Today, collectors refer to it as Adam's Rib. This pattern was a wide-ranging line having been made in many different shapes and colors. But only a few shapes can be found in iridescent glass. The ribbed line #900 was touted as one of Diamond's most saleable lines of glass in the 1920's. So why do some books refer to this pattern today as scarce and rare? Maybe we are missing the point and those references to scarce and rare only apply to a particular shape or color.

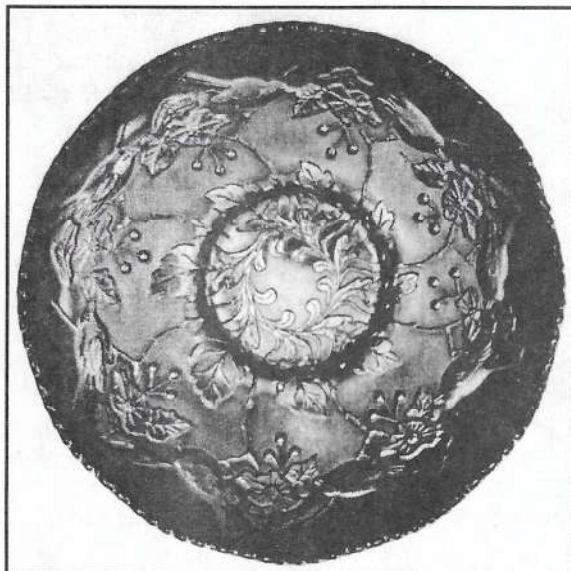
Ice green, celeste blue and marigold seem to be the dominant iridescent colors found.

We collect powder jar shapes and were pleased to have the chance to add this marigold Adam's Rib to our collection recently. Okay, some of you will say that it isn't a powder jar but a covered bon bon or candy. Well we are convinced that this shape held a lot more ladies talcum powder over the years than candy. Glass made by the glass factories and used by numerous companies as containers to sell a product were called "packer's goods". We have a Fenton powder jar with the labels still intact that contained a brand of talcum called "Bouton". It was sold by the Joseph Horne Co., a large department store in Pittsburgh PA. The Diamond Glass Co. also supplied this department store with glass products.

The three major carnival glass producing companies, Fenton, Northwood and Dugan/Diamond, all made covered jars in large numbers and in many of the same or similar colors. Northwood Glass and Fenton Glass companies even used the same mould number, referred to as #643 on these "look alike" jars. We do not know the mould number for Dugan/Diamond's "look alike jar". Maybe someone that does know will share that information with us. But this 1925 era marigold jar is a #900 Adam's Rib and the older Diamond jars (mould number?) carry a pattern we call today Wide Panel or Colonial. This marigold Adam's Rib was acquired on eBay from the woods of Eastern Maine. This is the first one we have seen. This powder jar shape has also been found in ice green. And we need one for our collection. Are these Adam's Rib powder jars scarce? Who knows?

Birds And Cherries

By Dean & Diane Fry



There are some collectors who place great value on selections having a CRE. Since these bowls have the birds along the outer edge, much of the detail is obliterated, unless displayed on the ice cream shape. This shape also will cost a bit more. Only one blue example sold at auction during the year 2000, bringing \$2,000. One having a crimped edge brought \$625 in a 1999 sale. Considering these were the only ones to

choose from each year, it is somewhat surprising that higher prices were not realized in each case!

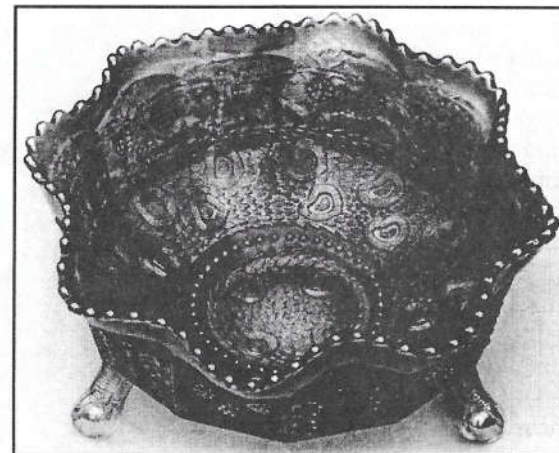
Granted, this naturalistic pattern from Fenton (the fourth in this series of rare bowls) is available from time to time on a bon-bon shape, as well as in a compote. However, none are readily at our disposal for purchase. They will require some search.

The only known amethyst chop plate sold last year for \$16,000, along with one in blue, at \$3,025, each with very slight damage. There is also a marigold chop plate known.

This is a rare "bird of a different feather", very well executed and balanced in design. The exterior has a smooth surface..... Should you tire of peafowl, swans, and the like, perhaps you could revive your interest in the company of one such handsome bird as this? 9/01

Hearts And Trees

By Dean & Diane Fry



As we continue this series of the rarest bowls made by Fenton, we must give Hearts and Trees its rightful place in the category. Many of the recent years, provide us with nearly forty auctions. Some of those years show that not a single example of this lovely pattern is publicly sold! The year 2000 was one such year!..... Amazing, really, when dozens of Hearts &

flowers shapes present themselves sale after sale!.... 1999 indicates two marigold, and one green footed bowl were sold, with the green example bringing only \$600?...Blue is the third color known.

This is a 9" bowl, ruffled or ice cream shaped, and carries the Butterfly and Berry pattern on the exterior.

Perhaps the Hearts and Trees interior "plunger" was created to please some discerning Fenton customer who placed an order for only "one-half turn" of the pattern; which consists of approximately two hundred pieces?... This could account for its scarcity today. Dugan's Farmyard bowls have always been considered rarities and quite desirable. Certainly Hearts & Trees bowls are seen with less frequency.

We believe there is tremendous satisfaction in collecting such items. Variety is certainly one of the "spices of life." Beauty and rarity combine in many instances, without an "overage" of expenditure; creating long-term pleasure. 09/01

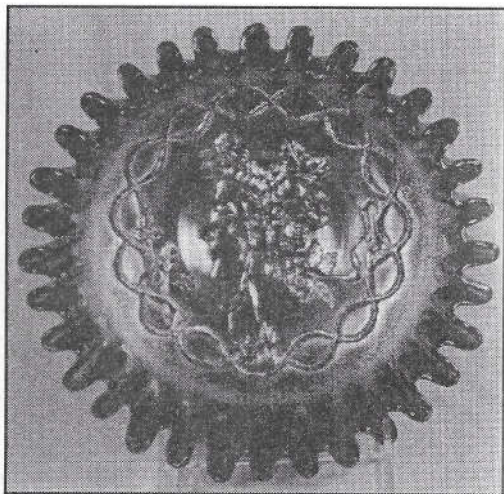
Correction: The wrong picture was printed with the article on "Hearts & Trees" in last month's bulletin. So for that reason, I chose to rerun the article with the correct picture this month. Sorry for the mistake; it was totally my error.

Eleanor Mochel, Editor

Goddess of Harvest

By Jack Adams

This may be Fenton's greatest piece. Some may argue with that lofty evaluation but that's okay. This is the tight crimped edge, known only in marigold and blue. I have seen more amethyst bowls than any other but have not seen the tight crimped edge in amethyst. Other edges are the six ruffled, the 3-in-1 and the pie crust edge. Both marigold and amethyst are known with those edges. For years we have heard rumors of a true flat plate in this pattern but none have ever proven true.



We first saw this illustrated in Presznick's Book III, plate 258. While she suspects Northwood as the manufacturer at that time, it is a Fenton product. The first one we saw was a marigold tight crimped edge bowl at the ACGA convention in Dayton, Ohio, 1972. It was owned by an Ohioan. We learned a valuable lesson at that convention. Joe Coruthers was our teacher. He looked over the for sale room, then went through the display room and made the owner of one of the display rarities an offer. The man accepted. If we had realized he would sell so cheaply we could have done that. Joe told us afterward, "Always buy from the displays." You do tend to get a more valuable collection that way. The only known bowl in blue, pictured here, was owned by a couple in Bellefontaine, Ohio, in the 1960's. We have no information about where or when they got it. They knew something about carnival glass and had written to Rose Presznick inquiring about their bowl. She had written back that she had pictured it in her book in 1965. She made them an offer.

A carnival glass collector in Kenton, Ohio, by the name of Paul Steiner, got a letter from the same couple in the winter of 1969-70. They had been referred to Steiner by an antique dealer who did not fool with carnival. Paul went to see it and found it was cobalt blue. The couple showed him Presznick's letter. Paul went home without the bowl that day.

A few days later, Steiner drove to Bellefontaine in a blizzard and made a

second offer. The couple promised to call him within two hours but when he did not receive a call, Steiner called himself and increased his previous offer by \$100 "if you deliver the bowl tonight." That did it. He got the bowl.

Steiner had been in touch with Dick Lochinger, Dayton, Ohio while negotiations were going on. Lochinger encouraged Steiner and expressed interest in purchasing the bowl himself. After Steiner got the bowl, he called Lochinger but got no answer. Without waiting long, Steiner took off for Pontiac, Michigan, where a prominent collector of the time. Harry Whitlow, was a hospital administrator. Whitlow promptly bought the bowl.

By 1973, Whitlow sold his collection to Marshall Shafer, who is a former president of the ACGA and was a dealer in Peninsula, Ohio, just south of Cleveland. Shafer put out a catalog and held an open house trying to sell off enough to pay his expenses. He didn't sell too much at first and quickly scheduled a couple of auctions. His asking price for the blue Goddess of Harvest bowl was \$4,250. It did not sell, so he put it in an October, 1973 auction in Akron, Ohio. Delton Kemp, Raymond, Ohio, took the bowl home for \$2,550.

Kemp then sold this bowl and several other pieces by private sale to Sam Roebuck, grocery chain owner from North Carolina. It stayed with Roebuck until he had John Woody auction his collection in St. Louis, September 4, 1982. It was Labor Day weekend. Mary and I had driven down from Wisconsin with the intent of going after this piece. At the time, Mary was about 7 months pregnant with our daughter, Laura. I figured that once Laura was on the scene, we would be far less active in pursuing carnival glass, so I'd better get something now. I was thinking of Laura as I bid on this piece and felt fortunate to get it for \$3100.

The day we brought Laura home from the hospital in November, 1982, I placed the bowl in Laura's crib and took a picture of it with her. Her little hand reached out and grabbed the edge of the bowl. This picture was featured on the Christmas cards we sent out that year

Happy  Holidays

Wishing you and those you love all the beautiful joys of the season.

HOACGA Officers

Charlotte – one of the Brockwitz' Beauties

The second in a series on non USA Carnival

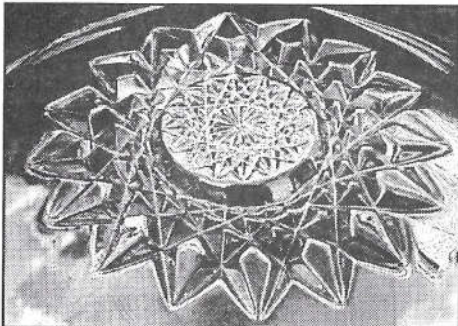
by Glen and Stephen Thistlewood

The Brockwitz glass works was situated in Saxony, Germany - near the city of Meissen, famous for its wonderful porcelain. Brockwitz was founded in 1904, at about the same time the Fenton brothers were setting up shop in Martin's Ferry. Employing around 300 people from the very start, the factory at Brockwitz was a major business - indeed, at its height of production in the 1920s, over 1,200 people worked there. The glass works had its own mould shop - in fact contemporary observers called it "a huge engineering shop" - where high quality, superbly crafted moulds were produced. One of the signature characteristics of many of Brockwitz' patterns is the intricate and fine detail seen on their intaglio, geometric designs. The skilled German workers were undoubtedly proud of their high quality work.



THE EXQUISITE CHARLOTTE COMPOTE MADE BY BROCKWITZ

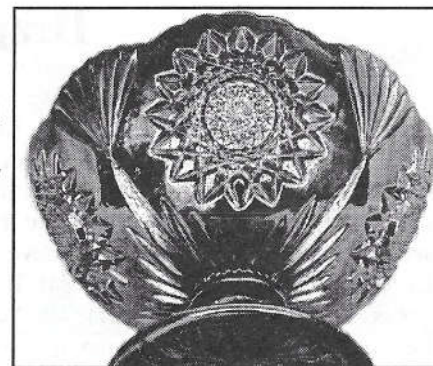
The little compote or stemmed sugar dish featured in this article has the pattern name "Charlotte". It is a rare item. Only two examples in this shape are currently reported - both are in rich blue with a truly superb iridescence, typical of Brockwitz at its best. The compote stands just 4" high - the top measuring a little over 5" across. The pattern features four giant, complex hobstars, executed in breathtaking detail. Between each hobstar is a fan motif that is joined to a larger, central fan that radiates out from the stem of the compote.



A CLOSE UP OF THE INTRICATE HOBSTAR ON THE CHARLOTTE COMPOTE

The complexity of the hobstar is masterful: measuring a full 2" across, each hobstar comprises an outer starburst of 16 points and a raised central button executed in fine detail. The edge of the compote has tiny flutes that form 8 broad scallops that are in perfect synchronization with the 8 motifs (4 hobstars and 4 fans) below. The pattern is on the outside of the

item, the interior is plain and beautifully iridized. The base of the compote has a 28 point star - and (typical of Brockwitz glass) a ground edge around the rim of the base. Often the ground areas may have tiny chips - these are a product of the method of manufacture. Unlike most Classic Carnival Glass from the early USA factories, there is also iridescence on the base.



THE CHARLOTTE PATTERN, AS SEEN FROM BELOW

The 1928 Brockwitz catalog featured this compote - the illustration from that catalog is shown on page 60 of "A Century of Carnival Glass." One other shape is known in this pattern - a bowl, so far only found in marigold. In the next article in this series, we'll be featuring another beautiful piece of European Carnival Glass.

We Need Your Help Northwood - Grape and Cable Pattern

by Bob Grissom

A special display of "NORTHWOODS GRAPE AND CABLE" is being planned for the Year 2002 HOACGA Convention. As in the past, with these special displays, much help is needed from the members.

I am in the process of listing all of the pieces, along with the various differences and combinations, i.e. Stippling, Banding, PCE, Variant. This is where you can be of help. Would you take a few minutes to make a list of your Grape and Cable pieces and then send it to me, please describe each piece. I especially need information about the ones that are Banded, Stippled, PCE, Variant (tendrils in center of bowl) and on the regular bowls and plates, also what the backside pattern is. On the Centerpiece or Fruit bowls are the flames (points) straight up. If you have any other pieces that are unusual, I would like that information also.

Please do not think that your pieces(s) will not be helpful, the more information that I have the better the list will be. You may send it by regular mail, Email, or Telephone.

The complete list, as I know it, will be available at the convention for anyone that will want a copy. So if you have a piece and have not informed me about it then it may not be on the list. Thanks for your help.

Bob Grissom, 7517 Evanston, Raytown, MO 64138
or Email bobimocg@aol.com

Drapery

by Roy Hieger

I have been collecting carnival glass for almost 15 years now, and have liked the Drapery pattern almost from the outset, actually from the first time I saw the picture of the ice blue candy dish in Edwards's Encyclopedia Of Carnival Glass. I can remember, like it was yesterday, when I finally got to see one "in the flesh". It sat on an eye level shelf in a well lighted cabinet at Clint & Gene Fox's home in Dallas. It was even prettier than I had expected. I tried to buy it right then and there, but Gene said she didn't want to sell it. I eventually got one of my own of course, plus a good many other Drapery pieces. It continues to be one of my favorite patterns.

Drapery is a Northwood pattern that was first produced around 1905, several years before the carnival era. It was made initially in blue and white opal table sets, water sets, and berry sets, often with gold trim on the vertical ribs or pillars (see p 89 of Harry Northwood, the Wheeling Years, 1901-1925). The spooner, creamer, sugar, and water pitcher all had 6 ribs that extended down onto, and slightly beyond the edge of the base. The small berry bowls also had 6 pillars but they did not extend onto the collar base. The berry bowl mold might, therefore, have been used to make the carnival rose bowls several years later. The large berry bowl had 8 pillars. Like those of the table set and pitcher, they extended beyond the edge of the base. The tumbler, unlike the other pieces, had only 4 ribs. They ended just above the base. The tumblers also had a smooth 7/8" wide band at the top. As you can see in Fig. 1, the tumbler mold was almost surely used to make the vases we now call Drapery Variant.



FIG. 1 - AMETHYST DRAPERY VARIANT VASE ON LEFT, AQUA OPAL DRAPERY TUMBLER (CRIDER IRIDIZED) ON THE RIGHT.

The non iridized pieces are occasionally encountered in antique shops and flea markets. Iridized pieces of the table, berry, and water sets are extremely rare. I recall only a few, those being a white tumbler and small berry bowl in the Kech collection sold by Tom Burns in August, 1993, and a white tumbler from Eleanor Hart's collection, also sold by Tom Burns, in June of 2000. The tumblers, as far as I know, are the only two known. The first now belongs to the Whitleys in Houston. A few of the blue opal tumblers have been iridized by Terry Crider (Fig. 1). They are real beauties and can be bought for around

\$50.00-\$60.00 each. Only 3 shapes, vases, candy dishes, and rose bowls, were made in carnival glass. The first advertised piece that I could identify appeared in the Butler Bros. mid-spring 1912 catalog. It was called a small vase, but was the shape we now refer to as a candy dish.

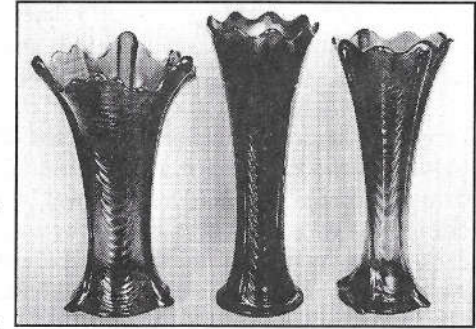


FIG. 2 - DRAPERY VASES WITH AQUA DRAPERY ON THE LEFT, COBALT DRAPERY VARIANT IN THE CENTER, AND A SAPPHIRE FOOTED DRAPERY VARIANT ON THE RIGHT.

Three different iridized vases were produced (Fig. 2), one (probably the first) being that made from the original tumbler mold and now called Drapery Variant.

The footed Drapery Variant vase is the rarest of the three. It, like the variant, has 4 ribs. Unlike the variant the ribs extend to the top (across the smooth band) and down beyond the base. The commonest of the three shapes is the one we call Drapery. It has only three ribs. Like those on Northwood's 4 Pillars vase, they extend beyond both the top and the base. The Drapery vase was almost surely made from the same mold as the candy dish, the dish swung into a vase.

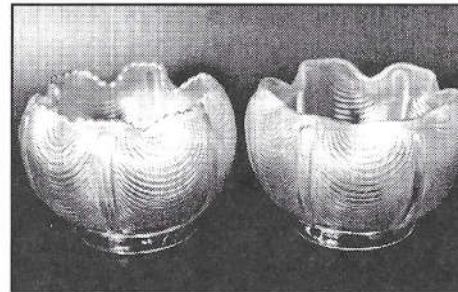


FIG. 3 - DRAPERY ROSE BOWLS, ICE BLUE ON LEFT, WHITE WITH SMOOTH TOP ON RIGHT.

The footed Drapery vases, those where the ribs extend beyond the base, are susceptible to damage, making it very difficult to find one with perfect feet. Perhaps because "dinged" feet are so common, really good pieces, even with flawed toes, still bring pretty good prices. I wouldn't let minor toe damage stand in the way of acquiring an otherwise rare or beautiful piece.

The rose bowls (Fig. 3) have a 1/2" high collar base and 6 ribs. The ribs begin above the collar base and end short of a narrow, smooth band at the top. The top of the rose bowl is typically ruffled with the edge fluted. Rarely one with a smooth edge is found. Those with the smooth edge have been either white or purple. All of the Drapery pieces have a plain interior. Most are marked with the circled, underlined N. Some of the rose bowls have only the circle, an earlier Northwood trademark. The rarest rosebowls seem to be the green (emerald and ice green), the aqua, and the Renninger blue ones. Tom Burns offered me a green one in the early '90s, at what turned out

to be a very reasonable price, and I declined because there was some minor damage. A big mistake. I believe that rose bowl sold later that year "with flaws" for about \$1500.00. I haven't seen another one since.

Drapery, like other Northwood patterns, comes in a wide variety of colors. Values for the various shapes and colors have been fairly stable for the common pieces (the AO Drapery rose bowl for example), but have increased dramatically for the rarest. Following is a listing of the colors available in each shape and their values, the latter based on Mordini's Carnival Glass Auction Prices for the last 6 yrs, and on the 2000 edition of Doty's A Field Guide To Carnival Glass.

SHAPE/COLOR	VALUE (MORDINI)	VALUE (DOTY)
VASES (DRAPERY)		
amethyst	\$275 (1993)	
aqua	\$275-450	\$250-450
aqua-opal	\$400-650	\$400-600
blue	\$125-325	\$200-350
electric blue	\$325	
green	\$135-285	\$200-350
ice blue	\$130-450	\$250-450
ice green	\$95-325	\$150-250
lime green	\$125-500	\$300-400
marigold	\$80-375	\$85-150
sapphire blue	\$450-1550	\$450-600
teal	\$325 (1992)	
vaseline	\$550 (2000)	
white	\$55-195	\$100-175
VASES (DRAPERY VARIANT)		
amethyst	\$125-200	
blue	\$125-325	\$200-350
marigold	\$100	\$85-155
VASES (FOOTED VARIANT)		
blue	\$100-200	
marigold	\$70-125	
sapphire	\$165 (2000)	
CANDY DISHES		
amethyst/purple	\$175-325	\$175-300
aqua	\$200-250	
blue	\$275-400	\$200-350
green	\$300-375	\$200-350
ice blue	\$105-235	\$125-200
ice green	\$155-200	\$200-350
lime green	\$200-250	
marigold	\$70-110	\$70-120
white	\$85-125	\$100-150

SHAPE/COLOR	VALUE (MORDINI)	VALUE (DOTY)
ROSE BOWLS		
amethyst	\$175-325	\$175-300
aqua opal	\$175-425	\$175-300
blue	\$185-325	\$200-350
blue, electric	\$350-700	\$600-900
blue, Renningers	\$2700 (1993)	
ice blue	\$425-700	\$400-700
ice green	\$1500-flaws (1993)	
lavender	\$345-700	\$250-400
marigold	\$100-400	\$150-250
purple	\$105-230	\$175-300
purple, plain edge	\$110-205	
white	\$265-425	\$250-375
white, plain edge	\$250-375	\$500-800

LIGHT SHADES	
marigold	\$75-100
white	\$85-100

Northwood also produced 2 sizes of lamp shades in the Drapery pattern, one 5 1/2", the other 6" from top to base. Each has 4 ribs that begin just below the fitter, and end at the base. They were produced around 1912-1913, and in the advertisements of that era the base glass was called Luna glass, and the iridescence was termed a lustre finish. The pattern nowadays is referred to as Pillar and Drape and the glass would be considered moonstone with marigold or white iridescence. The shades have NORTHWOOD printed in block letters in the fitter area.

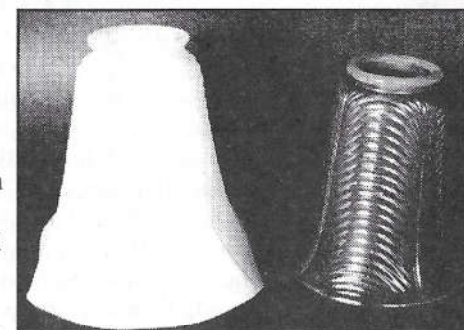



FIG 4 - DRAPERY (PILLAR & DRAPE) LAMP SHADES, WHITE ON LEFT, MARIGOLD ON RT, BOTH ON MOONSTONE.

Mordini's 2001 Carnival Glass Auction Price Report

17th Edition
Carnival Glass Auction Prices
For Auctions Conducted in 2001



\$12

By Tom and Sharon Mordini

For auctions conducted in 2001. Order Now!
Auction reports to be mailed in mid January, 2002

Tom and Sharon Mordini's 17th annual Carnival Glass Auction Price Report for all major carnival glass auctions conducted in 2001. Listing over 5,300 items of carnival glass sold at major carnival glass auctions in the U.S. Order Now!

- BIG BUCKS summary of items selling for more than \$2000
- Complete listing of all carnival glass conventions planned for 2002
- Listing of most carnival glass education publications
- Complete listing of carnival glass clubs worldwide
- Listing of all major carnival glass auctioneers in the U.S.
- Order form for back issues of our reports

Don't be without this valuable resource
Prices are as follows:
2001 report \$12
2001 Report (2 or more, each) \$11
Back Issues ('91 '92 '94 '95 '97 '98 '99 '00) \$8

Canadian orders should be by Canadian Postal money order in U.S. funds
Overseas mailings add (per report) \$3.00 (International Money Order in U.S. funds)

Order from Tom & Sharon Mordini, 36 N Mernitz, Freeport, IL 61032
Phone 815-235-4407 or email tommordini@aol.com

Texas Carnival Glass People To Know or Two Cotton Pickers Make Good

by Carol Cinclair



Floyd and Cecil Whitley

Floyd was born in Turkey Creek, Texas, a little out-of-the-woods place near Cleburne. His family moved to Bartlett and he attended Temple High School. As a youngster, Floyd actually picked cotton. He wasn't big enough to haul a regular sized cotton sack behind him, so they gave him a little

tow sack. He says his hands were bloodied in the process and that it was hot, hard, dirty, and backbreaking work for a little kid to do. Later he went on to the university, obtaining a Bachelors degree in "Chasing Women." After graduation, Floyd stuck his clothes in a cardboard box, took the \$35.00 his dad had sent him, and headed for Houston. He got a job with United Gas digging ditches because that was the only work they had at the time. One day while living in a rooming house (paying \$12.00 a week for board and room), he was out digging ditches when a newspaper blew up against his leg. He bent over, picked it up read the "want ad" section, and found a job as a gas measurement clerk. That job gave him his first real start in the oil business and the rest, as they say, is history. He went on to do everything in the oil and gas industry from digging more ditches to becoming the vice-president of a major company. Floyd has one son, Tommy, who along with his wife, Jeannie, are the current President and First Lady of our Texas Carnival Club.

Cecil, on the other hand, was born in Richards, Texas, which is eighteen miles outside of Huntsville and within the Sam Houston National Forest. Cecil is truly an "ol' country girl." She not only picked cotton as a child (never complaining about how hot and dirty it was) but hauled water to her family home in a mule-driven wagon. One day when she was fifteen years old and bringing back a load of water, the mules got scared when they heard the telephone wires "twanging" above their heads in the wind. They took off and ran away with Cecil, the wagon, and the water. Eventually she calmed the mules down, but it was a harrowing experience for her.

Cecil likes to tell how she graduated sixth in her senior High School class. Then Floyd knowingly adds that there were only nine students in the entire graduating class. But I figure that Cecil is a pretty smart woman because she went on to graduate from Texas Women's University in Denton with a Masters

Degree, taught school for fourteen years, and was the principal for twenty-five years at Field and Durham Elementary School in Houston. In 1979, the students and parents at Durham created the annual Cecil Whitley Scholarship Award. Last year, in Cecil's honor, over \$3,500 was given to students who once attended Durham Elementary and have now gone on to study at a college or university.

In June of this year, Floyd and Cecil were married for thirty-nine years. They met at a Houston area YWCA during a dance for people over thirty years of age. While walking down the street, Floyd heard the music and walked on in to see what was happening. At the registration table, Cecil Whitley was signing her name card just as Floyd Whitley was signing his. "Whitley-Whitley" was a good conversation starter and not much of a name change for Cecil to make one year later when they married. Floyd must have been quite taken by Cecil because he borrowed \$35.00 to take her on their first date.

Floyd and Cecil Whitley are two giants in the world of Carnival glass collecting. I consider them to be in the ranks of our Collecting Founding Fathers and Mothers. They started collecting in 1976. Cecil and her teacher friends (including Lanell Roy and Jessie Grant) used to enjoy going antiquing together. When Cecil saw Carnival glass, she was reminded of the glass that her mother once had. Her first piece was a Butterfly and Berry marigold tumbler with very poor mold work, but then Cecil only paid \$10.00 for it. The dealer was asking \$15.00. Lanell told Cecil to bargain for it, and so she did. Floyd was not excited about the glass at first because, at the time, there was very little literature available on Carnival glass. However, he soon became enamored by the glass and bought an amethyst Town Pump and a Northwood Cherry Tumbler from Jerry Wood, a local dealer.

That year the Whitleys met Sherman Hand at an auction and managed to acquire his series of little books. Sherman was writing a hardback at the time but was having difficulty getting financial backing for the project. The Whitleys provided help so that he could get some secretarial assistance and get the job completed. In appreciation, Sherman dedicated his book, *The Collectors Encyclopedia of Carnival Glass* (1977), in honor of the Whitleys and hand-signed the first copy off the press for them to keep.

Their first convention was a Lincoln Land Convention in 1977. After that they joined ICGA and were charter members of the Texas Club. When Jody Mitchell moved to Texas from the Northwest she wanted to get a local club going. So Jody; the Whitleys; the Browns (Bob, Jane, Robert Jr. and Suzanne); the Herrings; Lanell Roy; Jane and L.L. Dinkins and others got the club started. Floyd was the first president, serving for two years. He has also served as a member of the board for ICGA. Over the years, the Whitleys have generously provided both financial and moral support to many of the clubs and have been recognized for their efforts. They have given numerous banquet and educational

talks at Carnival glass clubs around the nation. Floyd and Cecil were also the first recipients of the John and Lucille Britt Award for Excellence in Carnival Glass, which is presented annually by HOACGA.

Cecil is the author of "World of Enameled Carnival Glass Tumblers" which was published in 1985. She is a worldwide recognized tumbler expert and has 780 different tumblers in her personal collection.

Floyd's favorite piece in their collection is an A.O. Poppy Show plate that he purchased from Helen James. He has enjoyed watching it sky rocket in value over the years. Cecil favors an A.O. Peacock at the Urn Master Ice Cream bowl which was purchased in 1987 as Cecil's Christmas present.

Cecil's "lust piece" is a marigold Frolicking Bears tumbler. She hopes that one is found someday and that the finder will sell it to her. Floyd would like to get a marigold People's Vase. (Only one is known, it belongs to Dr. Jack Adams, and he isn't selling it.) A complete set of People Vases would consist of four vases in the following colors: green, blue, amethyst, and marigold. Floyd has all of the other colors and has scoured the world for another marigold vase. Ironically, he had a chance to purchase the marigold People's Vases for \$15,000. Instead, he purchased a Peach Opal Farmyard Bowl (only one known); a green Frolicking Bear tumbler; and the green People's Vase for \$33,000. (Today, a conservative estimate would place the value of those three pieces at close to \$100,000.)

The Whitleys' worst "Carnival Glass Boo-Boo" would have to be the day Cecil broke their gorgeous electric amethyst Christmas compote. She was moving something to get a plate to show a friend knocked the compote with her elbow, and watched it fall to the carpeted floor and break into smithereens.

The Whitleys say that one of the "best purchases" was a Big Pulled Husk Corn Vase in amethyst. They bought it at a Tom Burns auction. At the time, it was estimated to be worth \$3,000. Tom said "Who will give \$5,000?" Floyd raised his hand, the audience gasped, and no one else bid. They had been shocked out of participating in the bidding. Floyd later sold that vase for \$17,000, making a nifty profit.

In 1999 the Whitleys auctioned a selected portion of their glass. They still have all of Cecil's tumblers, a cabinet full of "knock-your-socks-off" red pieces, a miniatures' cabinet with nine whimsey spittoons, and a custom cabinet containing rarities. Their glass is basically displayed in the living and dining room with sever plates and chop plates on the walls in the den.

In their spare time, Floyd likes reading nonfiction historical and biographical works. He also enjoys salt water fishing, golfing, and antagonizing Democrats. Cecil enjoys reading fictionalized works of literature, meeting with her friends, following Floyd around, and gardening.

Every year at the annual Texas Club Meeting, Floyd and Cecil treat the members to an ice cream social or buy the club dinner. This last year, we were all treated to a wonderful barbecue dinner before going to the open house at Jim and Kelani Lee's home. Floyd and Cecil are two Texas originals. They are kind, generous, friendly, warm and genuine. The Carnival glass world and Texas are indeed fortunate to have them.

Editors Note: This article appeared in the "Ranger", the Texas Carnival Glass Club newsletter. It is a very fine article about two outstanding people, who have had a very positive impact on the Carnival Glass collecting hobby. Because many carnival glass people today have not had the privilege of knowing the Whitleys, I thought this article would give you a good introduction. Thanks to Carol Cinclair for a very informative article.

HOACGA 2002 Convention Auction Report Part II

by Karen Engel

Woody Auction Company of Douglass, Kansas will be conducting the 2002 HOACGA convention auction featuring our collection. The first Woody auction that I attended was Sam Roebuck's in St. Louis back in 1982. There I met many HOACGA members and learned more about their great convention. From there we made plans to attend our 1st HOACGA convention the spring of 1983. We have been able to purchase some wonderful carnival glass throughout the years from these auctions and conventions and now would like to share them with you.

This month I'll highlight some of our favorites—PLATES; M-Lion, M-Peacock & Dahlia, M & B Soldiers & Sailors, B-Atlantic City & Parkersburg Elks, G-Amethyst Lotus & Grape, M & G Peter Rabbit, M, B, White and Amethyst Persian Medallion, Sapphire Grape & Cable, M, B, G, W, IB, JG Poppy Show, Lime Green, G, P, M, IB, and White Hearts & Flowers, Lime Green and Ice Green Opalescent Rose Show, AO Three Fruits, Reningers Blue & IB N Peacocks, Smoke Heavy Grape Chop Plate, P Wishbone & Spades, Red Floral & Optic ftd Cake Plate and Many others. Hope to see you in April and that you will find something you'll want to add to your collection.

\$1,000.00 Cash Donation Drawing

When thinking of a piece of glass to be given away as a prize, we found it difficult to come up with an item that we thought would be appealing to all members. So the decision was to offer a Thousand dollar cash prize. This should fit into any one's collection. The winner can use the money to buy the piece that they would like to have, or at least make a down payment on it.

For a Ten dollar donation to HOACGA you can enter your name twelve times for an opportunity to win the \$1,000.00. The entry forms are included in this bulletin. **Please fill out the necessary information and return it to the Secretary, Ann McMorris, P.O. Box 4361, Topeka, KS 66604-0361.** Your entries will be submitted for the drawing, which will be held at the Banquet on April 27, 2002. **You do not have to be present to win.**

To those that like to take a few chances at the Casinos, the odds may be better at this drawing.

HOACGA CONVENTION - 2002

The dates for the Convention are April 25, 26, 27, & 28, 2002. It will be at the Embassy Suites Hotel (Airport), Kansas City, Missouri (same Hotel as previous years). Reservation may be made by calling the Hotel at 816-891-7788. For the special room rate of \$98.00/night, mention that you are with the HOACGA convention. **The special room rate is only good until April 10, 2002 (after that the rate will be \$155.00/day), if you are thinking about attending the convention, call and make your reservations, you can always cancel.**

The "John & Lucile Britt Award for Excellence in Carnival Glass" will be presented to Charles & Eleanor Mochel at the Thursday Luncheon. Gail Eichhorst will present an educational program on Friday morning. Will & Judy Schutz will present the Banquet program. There will be a special program of Northwood Grape & Cable pieces on Thursday evening, the display will be available for viewing Thursday and Friday.

The Convention auction will be the Karen & Doug Engel collection. The Woody Auction Co. will be conducting the auction. Karen & Doug have been collecting Carnival Glass for more than 25 years, this is an outstanding collection. This is an auction that you will not want to miss. This will be an opportunity to see and buy some good carnival glass. They are selling their collection in order to purchase a completely restored Vintage (about 150 years old) home.

We hope that you are making plans to attend, because we are making plans for you to enjoy another opportunity to visit old and new friends, see some outstanding glass in room displays, talk carnival and add to your carnival knowledge.

If you have any questions please call Bob Grissom, 816-356-5320, or Email bobimocg@aol.com

This page intentionally left blank

HOACGA 2002 Convention Drawing

Prize: One-Thousand (\$1,000.00) dollar check

Donation: For a \$10.00 donation your name will be entered 12 times as a possible winner for the \$1,000 prize drawing.

Name: _____ Address: _____

City: _____ State: _____ Zip: _____ Phone: _____

HOACGA 2002 Convention Drawing

Prize: One-Thousand (\$1,000.00) dollar check

Donation: For a \$10.00 donation your name will be entered 12 times as a possible winner for the \$1,000 prize drawing.

Name: _____ Address: _____

City: _____ State: _____ Zip: _____ Phone: _____

HOACGA 2002 Convention Drawing

Prize: One-Thousand (\$1,000.00) dollar check

Donation: For a \$10.00 donation your name will be entered 12 times as a possible winner for the \$1,000 prize drawing.

Name: _____ Address: _____

City: _____ State: _____ Zip: _____ Phone: _____

HOACGA 2002 Convention Drawing

Prize: One-Thousand (\$1,000.00) dollar check

Donation: For a \$10.00 donation your name will be entered 12 times as a possible winner for the \$1,000 prize drawing.

Name: _____ Address: _____

City: _____ State: _____ Zip: _____ Phone: _____

HOACGA 2002 Convention Drawing

Prize: One-Thousand (\$1,000.00) dollar check

Donation: For a \$10.00 donation your name will be entered 12 times as a possible winner for the \$1,000 prize drawing.

Name: _____ Address: _____

City: _____ State: _____ Zip: _____ Phone: _____

HOACGA 2002 Convention Drawing

Prize: One-Thousand (\$1,000.00) dollar check

Donation: For a \$10.00 donation your name will be entered 12 times as a possible winner for the \$1,000 prize drawing.

Name: _____ Address: _____

City: _____ State: _____ Zip: _____ Phone: _____

Please complete the 12 tickets and return with your check made to HOACGA.
Please send to: Ann McMorris, PO Box 4361, Topeka, KS 66604-0361

Tornado vases

by Bob Grissom

Pattern Series

Heart of America Carnival Glass Association

December 2001

The "Tornado" name was given to this vase by Marion Hartung. She lived in Kansas where tornadoes are a common occurrence. One could understand that it did not take much imagination for her to name this vase. It has also been called the "Tadpole" vase. The Glen & Stephen Thistlewood book, *A Century of Carnival Glass* attributes this vase to possibly have been made by Webb of Stourbridge, England prior to it being made by Northwood. Their name for it was a "Peacock Decoration." For a detailed description of these early vases see the Thistlewood's book, page 53 and 54.

The Northwood vases are found in two sizes. They all have the three ruffled top, except the one Wisteria whimsey. All of the larger vases have a smooth surface. The smaller vases are found with both the smooth surface or with ribs that run diagonally. The "tornado" motif is repeated three times, each within a panel, that is defined by three vertical zippered bars. The vases contain the usual Northwood (N) mark.

WHIMSEY – WISTERIA –
This dramatic vase is unusual not only for its unique conical shape and single base rim, but also its rarely seen wisteria color. It is made from the large size vase. The top two inches or so have a heavy stretch iridescence.





LARGE VASE – The large vase has a 3-inch base and is about 6 5/8 inches tall. Why there is so little difference between the two sizes is another Tornado mystery. The large size is more difficult to find than the small size, is known only with a smooth surface, and is only in amethyst/purple, green, lavender(R), and marigold(S). Zippered bars on the large size extend only as far down as the tails of the tornadoes.



COLLAR BASE – The normal vases have what appears to be two base rims. The example shown with only one base rim belongs to Carl & Eunice Booker. Carl has seen more than one of these. It is speculated that these had the bottom part of the base ground off, possibly when they were made at the factory. Or, after making some of these vases the second collar base was added for the ease of handling when the glass was hot.



SMALL VASE – SMOOTH SURFACE – The small vase has a 2 5/8-inch base and is about 6 inches tall. The zippered bar extends all the way to the collar base. It is found in usual colors of amethyst/purple, green, and marigold, plus a very few in white.



DEEP RUFFLED – This vase sold at the Seck auction on October 13, 2001. The three ruffles are pulled down much more than the normal vases. This vase is amethyst and sold for \$2,100.00. Swede Tilberg has one with the same top but in blue. Both are ribbed.



SMALL VASE – RIBBED SURFACE – The small size can also be found in a scarce ribbed version. Most are amethyst, a few marigold, cobalt is scarce, and a few are known in ice blue. The first known example in ice green turned up in England recently. The zippered bar extends all the way to the collar base.



PEDESTAL VASE – This carnival vase may have been Norhtwood's first attempt at a Tornado, although it is not marked. It is usually referred to as the Tornado variant. It has a smooth surface and is molded, with three distinct mold seams all the way through the pedestal base. There are very few examples known, all marigold.



WHIMSEY – SAPPHIRE – This spectacular vase is a whimsy in every sense of the word, and the only known example in sapphire. It was made from the small mold and pinched in at the top, then flared and ruffled. The top also has a stretch iridescence.



PEDESTAL VASE – (Non U.S.) – Marigold and marigold with green tornadoes are known. The tail of the Tornado on these vases goes straight down and they do not have the three vertical zippered bars. The vases have a smooth surface and were blown. For a detailed description refer to Glen & Stephen Thistlewood's book, *A Century of Carnival Glass*.



WHIMSEY – MARIGOLD – This vase is made from the large mold and pinched in at the top, then flared and ruffled, and has a single base rim. It is the only one known in marigold.



WHIMSEY – MARIGOLD with GREEN TORNADO – What characterizes this large marigold Tornado as a whimsey is the green tornadoes. Interestingly, green tornadoes are also found on some of the non-U.S. pedestal Tornado vases. This vase is made from the large mold.



SPIRAL RIBBED VASE – Northwood made this swung vase. It is very scarce and has the same ribs as the ribbed Tornado. The vertical rib dividing the three sections of the vase is different than the zippered bar on the Tornado vase. The vase contains the Northwood (N) trademark.

Glass courtesy of Carl and Eunice Booker, Burns Auctions, Bart Dooley, George and Mavis Loescher, George Thomas/Dale Matheny, Seck Auctions, Dennis Sutton and Gus VanDePerre. Thanks to Dennis Sutton for sharing his knowledge.

HOACGA 2002 Convention Drawing

Prize: One-Thousand (\$1,000.00) dollar check

Donation: For a \$10.00 donation your name will be entered 12 times as a possible winner for the \$1,000 prize drawing.

Name: _____ Address: _____

City: _____ State: _____ Zip: _____ Phone: _____

HOACGA 2002 Convention Drawing

Prize: One-Thousand (\$1,000.00) dollar check

Donation: For a \$10.00 donation your name will be entered 12 times as a possible winner for the \$1,000 prize drawing.

Name: _____ Address: _____

City: _____ State: _____ Zip: _____ Phone: _____

HOACGA 2002 Convention Drawing

Prize: One-Thousand (\$1,000.00) dollar check

Donation: For a \$10.00 donation your name will be entered 12 times as a possible winner for the \$1,000 prize drawing.

Name: _____ Address: _____

City: _____ State: _____ Zip: _____ Phone: _____

HOACGA 2002 Convention Drawing

Prize: One-Thousand (\$1,000.00) dollar check

Donation: For a \$10.00 donation your name will be entered 12 times as a possible winner for the \$1,000 prize drawing.

Name: _____ Address: _____

City: _____ State: _____ Zip: _____ Phone: _____

HOACGA 2002 Convention Drawing

Prize: One-Thousand (\$1,000.00) dollar check

Donation: For a \$10.00 donation your name will be entered 12 times as a possible winner for the \$1,000 prize drawing.

Name: _____ Address: _____

City: _____ State: _____ Zip: _____ Phone: _____

HOACGA 2002 Convention Drawing

Prize: One-Thousand (\$1,000.00) dollar check

Donation: For a \$10.00 donation your name will be entered 12 times as a possible winner for the \$1,000 prize drawing.

Name: _____ Address: _____

City: _____ State: _____ Zip: _____ Phone: _____

Please complete the 12 tickets and return with your check made to HOACGA. Please send to: Ann McMorris, PO Box 4361, Topeka, KS 66604-0361

Original Carnival Glass Makers

Fenton Art Glass Company

by Bob Grissom

Who were the companies that made this inexpensive iridized glass which later became known as Carnival Glass? Between the years of 1907 thru 1925 eight Companies produced the major portion of the glass, Fenton, Northwood, Imperial, Dugan/Diamond., Millersburg, Westmoreland, U.S. Glass (which was a conglomerate of several companies), and Cambridge. Other companies iridized a small amount of glass.

Frank L. Fenton and his brother John W. Fenton were the principal founders of the Fenton Art Glass Company of Williamstown, West Virginia. The company has been in continuous operation since it's founding in 1906, and started producing iridized glass in 1907 and continued until sometime around 1925. They produced a great many forms of colored pressed glass during this period, Many of these pieces are considered very collectable today. But, their major production was the iridized glassware.

As with all of the companies that produced carnival glass, most pieces can be identified as being made by a particular maker due to certain characteristics, i.e. color, pattern, shape, edges, and back pattern.

Colors: Fenton made the usual colors of Amethyst, Cobalt Blue, Green, Marigold, and White. Pieces in cobalt blue and marigold are easily found in a large majority of their patterns. Of the usual colors, amethyst pieces are the most difficult to find. Green and White pieces are available, but not in all patterns. Fenton made a limited number of pieces in Amber, Aqua Opalescent, Custard, Lime Green, Lime Green Opalescent, Moonstone, Peach Opalescent, Red, and Vaseline. Their production of carnival glass was noteworthy for having produced most of the red pieces. Red pieces were made in a very limited quantity, and they have always been some of the more sought after carnival glass items. Aqua Opalescent is another favorite color of the carnival glass collector, but the Fenton pieces are not as popular as those made by Northwood.

Patterns: More than one hundred fifty different carnival glass patterns are attributed to Fenton. Two patterns. Butterfly & Berry and Orange Tree are found on more pieces than any other. These two patterns can be found on either the front or back of various pieces. Some of the best-known Animal and Bird patterns came from the Fenton factory. Such patterns of "Kittens", "Lion", "Panther", "Dragon & Lotus". "Dragon & Strawberry" "Peacock & Dahlia", "Peacock & Grape", "Stag & Holly" and "Peacock & Urn". Many of their patterns follow an oriental theme. The "Bearded Berry" patterns is

This page intentionally left blank

Place
34¢
Stamp
Here

**HOACGA Research
Project — November**

HOACGA
Eleanor Mochel
14611 Eby Street
Overland Park, KS 66221

Fold here, please tape top closed.

COMMENTS

Discount Sales On Videos Now Thru December!

If you are looking for that special gift for someone, consider one of the videos taken of carnival glass programs. The videos are interesting, informative and taken by professional photographers. Special prices are as follows:

One video for \$15 Two for \$30 Three for \$35

Four or more \$10 each. S&H included This doesn't include the long play videos.
Please use order form for placing your order.

Order Form – Video Tapes

H.O.A.C.G.A. CONVENTION SEMINAR VIDEO TAPES

_____	"Red Carnival Glass" (Richard Cinclair, Bob Allaire & Joyce Seale)	\$20.00
_____	"Shades of Blue" (Richard Cinclair)	\$20.00
_____	"Poppy & Rose Show Pieces" (Tom Mordini)	\$20.00
_____	"Fenton Two Flower" (Bob Stremming)	\$20.00
_____	"Carnival Glass Smalls" (Eleanor & Jack Hamilton)	\$20.00
_____	"Small Plates" (Smokey Cloud)	\$20.00
_____	"Northwood Peacock & Urn Ice Cream Sets" (Harold Cox)	\$20.00
_____	"Carnival Glass Collecting Experiences" (Carl & Ferne Schroeder)	\$20.00
_____	"Heinz 57 Variety Carnival Glass Collection" (Jerry & Carol Curtis)	\$20.00
_____	"Miniatures" (John & Lucile Britt)	\$20.00
_____	"Table Sets" (Leonard, Kremer & Grissom)	\$20.00
_____	"Plates" (Ruth Green & Richard Cinclair)	\$20.00
_____	"Plethora of Patterns" (Dean & Diane Fry)	\$20.00
_____	"Millersburg" (Dick & Jennie Hostetler)	\$20.00
_____	"Swung Vases" (Dave & Joan Doty)	\$20.00
_____	"Holly Pattern" (John Mikkonen)	\$20.00
_____	"Imperial Glass" (Norene Duran)	\$20.00
_____	"The Molding Process" (Howard Seuffer of Fenton Glass Co.)	\$20.00
_____	"Iridescence" (97, John Muehlbauer)	\$20.00
_____	"Plates" (97, Judy Maxwell)	\$20.00
_____	"98 Aqua Opal Display" (Discussion by Jim Seeck)	\$20.00
_____	"98 Recollection of Collectors"	\$20.00
_____	"98 Causes of Imperfections in Glass" by Fenton/Seuffer	\$20.00
_____	"98 Britt Award/Grissoms, Banquet/Cinclair", LONG PLAY	\$35.00
_____	"98 Aqua Opal, Recollection of Collectors, Causes of Imperfections in Glass" by Fenton/Seuffer, LONG PLAY	\$35.00
_____	"99 Fenton Glass" (Don and Barb Chamberlain)	\$20.00
_____	"99 Recollections of Collectors"	\$20.00
_____	"99 Millersburg Display"	\$20.00
_____	"99 Britt Award Luncheon" (George & Mavis Loescher)	\$20.00
_____	"99 Banquet Green Millersburg" (Bill Richards, Sr)	\$20.00
_____	"00 Wal-Mart Connection" (Jerry & Carol Curtis)	\$20.00
_____	"00 Britt Award Luncheon" (Richard & Carol Cinclair)	\$20.00
_____	"00 Plate Display" (Tom Burns)	\$20.00
_____	"00 Shoppin' & Hopin'" (Galen & Kathi Johnson)	\$20.00

USA S&H included in price of tape

TOTAL \$ _____

SEND ORDERS TO:

Ann McMorris
P.O. Box 4361
Topeka, KS 66604-0361

Name _____

Address _____

Thistlewood's Carnival NETWORK journal is moving to a new, large format NETWORK SPECIAL.

With the publication of Carnival Network #32 at the end of 2001, we mark the completion of 8 years of research, writing and revelation. We're now moving Network onto a different basis and, going forward, we will be producing new large format, **Network Specials**.

In the new Network Specials there will be a wealth of original catalog material, plus guided information on current knowledge. Our first Network Special will be on **Czech Carnival** and will contain a tremendous amount of original catalog and archive material. Pages and pages of items from the catalogs of Josef Rindskopf, plus some from Inwald, will all be included along with color photos and essential guide information. Collectors will be able to see for themselves the prolific range of shapes and patterns made by Rindskopf. Many of these items are currently reported in Carnival - but there are many which are not. The guide notes within the text will provide all the essential information needed for a full understanding of the current situation.

The first NETWORK SPECIAL featuring CZECHOSLOVAKIAN CARNIVAL GLASS will be published in Spring, 2002. The new format will be a new big size 8 x12 inches in 40 huge, packed pages full of clear illustration. The cost for this first Network Special will be \$15 US (or £10 sterling for the UK only) - postage included. Please order soon to be sure of obtaining your copy, as the 1st. Edition Printing will be limited.

Future SPECIALS will focus on Brockwitz, Sowerby, Indian Carnival & more

All **Network Back Issues**, from our Premier issue back in 1994, through to the 2000 and 2001 Colors, are currently in stock at \$5 each. However, please be advised that for some issues, there are very few copies left. Please order any back issues you need soon (order from PageWorks, details below) so that you can complete your unique set of **Network 1 - 32**.

Ordering Details for the First Network Special on Czech Carnival: Covering the USA, please send \$15 US (payable to PageWorks) to; PageWorks, PO Box 2385, Mt. Pleasant, SC 29465, USA

Covering the UK, Canada and Australia, please contact Glen and Stephen Thistlewood, PO Box 83, Alton, Hampshire GU34 4YN, England. For UK orders only cost is £10. For Canada and Australia send \$15 US. Please make checks payable to G. Thistlewood (GBP or USD only)

Email s.g.thistlewood@btinternet.com Website <http://www.carnival-glass.net>

January Anniversaries

Norman & Annette Bosselman
3103 Brentwood Circle
Grand Island, NE 68801
Married on Jan. 18, 1941

Ward & Patricia Atwater
55 Fifth Ave
Kitchener, ONT N2C 1P5
Married on Jan. 10, 1948

ROSTER UPDATE - December 2001

NEW MEMBERS

Schuch, John & Eselgroth, Sally
10725 Sterlingwood Way, Rancho Cordova, CA 95670
Phone 916 262 2579 - email plushkitti@aol.com - referred by NCCC

CHANGE OF ADDRESS

Benedict, Dan
6097 Boca Colony Dr., Apt. 1614
Boca Raton, FL 33433
(561) 955-9197

Davis, Doug & Nancy
12655 El Camino Real
Atascadero CA 93422 6227

Dodd, Carl & Robin
11519 Sagevalley Drive
Houston, TX 77089 5240

Sibson, Steve & Kathy
411 West 4th Avenue
Mitchell, SD 57301

Wells, Gary & Linda
2745 Oliver-Wells Road
Henrietta TX 76365

Wells, Granvel & Sarah
2743 Oliver-Wells Road
Henrietta TX 76365

E-Mail Address

Mr. Jessie Winkle, Sisters, OR - winks@bendnet.com
Lou Giralдин, Woodinville, WA - bearcrkrd@hotmail.com
Davis, Doug & Nancy, Atascadero CA - susiqd@msn.com
Warren, W. J. & Nan, Tonawanda NY - wwa38@aol.com

HOACGA Notebook Section - Candlesticks

Bob Grissom

Now that the Vase Section of the HOACGA Notebook has been completed, it is time to put together a new section. Some members have suggested Candlesticks for the next section. This is an item of Carnival Glass that has had very limited information written about it. With your help, we can supply some much needed knowledge for the collector. First, I need information about the Candlesticks you have in your collection. **If you have any Candlesticks please let me know their pattern name, colors, and maker and any other information that you may know about them.** After I have a list of Candlesticks I will then need photographs of the different patterns, I will ask for this information later.

So please make a list of your pieces, send it to:
Bob Grissom, 7517 Evanston, Raytown, MO 64138
or Email bobimocg@aol.com

Heart of America Carnival Glass Association BOARD MEETING - November 29, 2001

Minutes of the meeting of the Heart of America Carnival Glass Association Board of Directors in Lawrence on November 29, 2001. Board members present – President Grissom, Treasurer Ball, Secretary McMorris & Editor Mochel.

December Newsletter – The December newsletter articles and club information were discussed. The order form for plateholders and vase sections and the request for Grape and Cable pattern information from the members for the Convention Display will be continued. Information is being collected for the next Pattern Notebook section on candlesticks. Eleanor reported about 25 addresses for the newsletter will not barcode and these newsletters are being sent regular first class. The 2002 Emerald Green Hatpin Holder order form will be included. The quarterly color section will be included in this issue.

Convention Souvenir for 2002 - Ann McMorris reported orders are being received for the 2002 Hatpin Holder and if there are orders to be used as Christmas presents, the latest date they can be sent to insure delivery before Christmas is December 14. Any orders received after December 14 will not be mailed until after Christmas. Delivery of the Souvenir from Fenton has been received and 150 are at the Secretary's address and the remainder at Bob Grissom's.

Financial Report – Treasurer Ball reported on the income and expenses for the past month. As a fund raiser, the Board agreed on a raffle with the prize of \$1,000 cash. Donations are \$1 for each ticket or \$10 for 12 tickets. The prize will be awarded at the Convention. It was noted that an audit of the books has been costing around \$300 per year and in view of our financial status, it was agreed that an audit committee of three current members would be appointed to perform the audit for the current fiscal year.

Convention - At each board meeting, the various activities planned for the 2002 convention are reviewed and discussed so that planning can go forward. The secretary was directed to send a news item on details of the convention to all carnival glass clubs for inclusion in their publications. Bob and Ann are collecting information on different types of badge holders.

Other matters discussed – (1) Diane Fry has offered to work on a color section for the newsletter on Elegance pieces. (2) HOACGA members are encouraged to help with production of the color sections. They should contact Bob Grissom if they wish to offer their help. (3) The Board was reminded that HOACGA will host a hospitality room at the motel prior to the Mickey Reichel Jan. 4, 2002 auction in Boonville, MO. (4) Bob Grissom is working on the next article for the Discover Magazine. Two articles have been published to date.

The Board extends Holiday Greetings to the membership.

Respectfully submitted,

Ann McMorris, Secretary

2002 HOACGA Souvenir

by Bob Grissom

The HOACGA "Good Luck" hatpin holder was made in 1977 in a "Flame Red" color and again in 1980 in "Ice Green". Last year Frank Fenton made the hatpin holder in Vaseline Opalescent. They experienced much difficulty in its production, after working for at least 4 turns they were able to get 215 good pieces for the club.

This year they were making Emerald Green glass and we asked Frank to make the Hatpin Holder in this color. Of course Frank always likes a challenge, so he said he would. He called after they had worked for one turn and said that they had only gotten 97 good pieces because they had again experienced some problems, the feet were cracking. He had gotten the experts together and they resolved the problem. They had to make some changes to the mold and would try again on Monday. So they assigned one of the more experienced glass crew workers to the job on Monday. Frank said they had some difficulty at the start of the turn, but they soon resolved the problems. So, once they started they wanted to make sure they made enough for our order, the result of this turn of work was 195 good pieces.

Frank sent two samples to view. The pieces are a very beautiful Emerald Green with super blue, green & rose iridescence. In order to have the Hatpin Holder made in this color we had to make them now, because Fenton Art Glass Co. would not be making this color again before the convention.

Souvenirs have been made by many of the clubs and sometimes when we look at these pieces we do not give much thought as to the problems encountered when making the souvenirs. I firmly believe that Frank Fenton goes to all of this effort because he wants to provide a good piece of glass for the collectors. We appreciate Frank's effort in making the souvenirs.

The Room Display award, the "Hobnail" spittoon will also be Emerald Green.

The Emerald Green Hatpin Holder is a very beautiful souvenir. When you purchase a Souvenir you get a beautiful piece of Carnival Glass plus you are helping to financially support an organization that is supporting our

investment and promoting the hobby that we enjoy. If we the collectors do not support our organizations, then who will?

Members may order as many of the hatpin holders as they desire. They would make a lovely Christmas gift.

The price of the Souvenir is \$50.00 plus \$5.00 for shipping. Make checks payable to HOACGA. Hatpin holders will be shipped when your order is received.

2002 HOACGA Souvenir Emerald Green Hatpin Holder Order Form

Name _____

Address _____

City _____ State _____ Zip _____

**Emerald Green
Hatpin Holder**

_____ @ \$50.00 ea = \$ _____

SHIPPING _____ @ \$5.00 ea = \$ _____

TOTAL \$ _____

Make checks payable to HOACGA and send to:

Ann McMorris
PO Box 4361
Topeka, KS 66604-0361

**SUNSHINE STATE CARNIVAL GLASS ASSOCIATION 2002 CONVENTION
REGISTRATION FORM**

TOM BURNS AUCTION - Saturday, February 2, 2002
January 30, 2002 Through February 3, 2002 / Early Registration January 30, 2002
Howard Johnson Resort Hotel, Deerfield Beach, FL 1-800-426-0084 or 1-305-428-2850
Rates are \$119/night city side and \$139/night ocean side. Free parking, no rental tables available.

PLEASE MENTION "SSCGA CARNIVAL GLASS"
OUR THEME THIS YEAR IS "FISHING FOR CARNIVAL GLASS"
Your room display can reflect this theme or anything you wish.

Wed Jan 30th: Pizza Party (6:00 PM)	No. Attending _____	FREE
Thur Jan 31st 10:00 AM - Seminar		
8:00 PM - 10:00 PM Fishing Contest		FREE
Club will pay for pier entrance, rental of fishing gear and bait. Spectators pay \$1.00 to enter pier. Pier is open 24 hours/day, contestants may continue fishing after contest ends.		
Number entering contest _____		
Number bringing own fishing gear _____		
Fri Feb 1 st : Breakfast		FREE
(8:30 AM-11:00 AM)	Directions will be provided in registration packet	
	Number attending _____	
Western Barbecue Luncheon (12:00 Noon)		FREE
Will include Business Meeting and Fishing Contest awards and be followed by UGLY CARNIVAL PIECE contest.		
	Number attending _____	
Bringing Ugly Carnival Piece entry Yes <input type="checkbox"/> No <input type="checkbox"/>		
Sat Feb 2 nd : 9:00 AM Tom Burns CG Auction with FREE lunch		
Buffet Banquet (6:00 PM)	_____ @ \$25.00/person	\$ _____
One Year SSCGA Membership/Renewal @ \$25.00 per Family		\$ _____
Convention Registration for Members (Children free)	_____ @ \$ 5.00 each	\$ _____
Convention Registration for Non-Members	_____ @ \$40.00 each	\$ _____
	TOTAL	\$ _____

Name: _____
Address _____
City/State/Zip _____
Telephone: _____ Email: _____
Make Checks Payable to: S.S.C.G.A
Send To: Loretta Nielsen, 2011 SW Oak Ridge Road, Palm City, FL 34990
Telephone: 561-287-1443/ Email: jnie222@aol.com

DEADLINE FOR SPECIAL ROOM RATE IS NO LATER THAN JANUARY 4, 2002. RATES INCREASE TO \$179 CITY SIDE AND \$209 OCEAN SIDE AFTER THIS DATE OR WHEN BLOCK IS GONE

JANUARY 5th -- REICHEL AUCTION

If you will be coming to the Mickey Reichel auction on January 5th, you are invited to the HOACGA Hospitality Room at the Days Inn Motel on Friday evening January 4th. It will be open at 5:00 P.M. and stay until the last one leaves that evening. We would like to invite you to come by and enjoy something to eat and spend some time socializing with other members and collectors. Hope to see you there.

Tampa bay Carnival Glass Club
 " Lose Your Heart to Carnival Glass "
 Feb. 7th, 8th, 9th, 2002

Best Western Motel 21338 U.S. Hwy. N. Clearwater, FL. 33765. Ph. (727) 799-1565
 Rates are \$ 65.00 After Jan 6th. They will increase to \$ 84.95
 Econo Lodge Motel 21252 U.S. Hwy. N. Clearwater, FL. 33765. Ph. (727) 799-1569
 Rates are \$ 58.00 After Jan. 6th. They will increase to \$ 71.95
 Please note that all rooms are subject to an 11% motel tax.

Make your reservations directly with the motel. Be sure to mention the Tampa Bay Carnival Glass Club to obtain the special rates shown above. These rates apply only for the 6th, 7th, 8th, and 9th of February. Be sure the motel understands any special needs you may have. It may be noted that neither motel has elevator service.

Registration Form

Name(s): _____
 Address _____
 Phone _____

Activity	Number	Cost
I/we plan to attend hospitality room reception and yearly business Meeting Thursday evening.	_____	_____
I/we plan to attend the Poucher open house Thurs. morning	_____	Free
I/we plan to attend the John Martin open house & outdoor buffet Thurs. afternoon @ \$ 7.50 each. (Please note that this event will be limited to the first 30 ticket holders <u>only</u> because of space limitations).	_____	_____
I/we plan to attend the banquet Sat. at 7:00 PM Chicken Marsala Cost \$ 24.00 per person Roast Sirloin of Beef	_____	_____
I/we want table(s) for the Show and Sale on Saturday @ \$ 25.00 ea. 9:00 AM to 3:00 PM	_____	_____
Registration fee. Club members \$ 3.00 per family. Non members \$ 5.00 per family	_____	_____
Total amount		

.....
 " Please make your room reservations and register early "

 For additional information, contact Guy Nelson Ph. (941) 764-9452. Please send this completed form with your check payable to the Tampa Bay Carnival Glass Club. Mail to

TBCGC c/o Guy Nelson
 1100 Great Falls Ave. N.W.
 Port Charlotte, FL. 33948

Condolences

We send our sincere condolences to Todd Kuwitzky and his family on the death of his mother Bonnie Kuwitzky. She was a carnival glass collector and got Todd and Susie collecting carnival glass. Cards may be sent to:

Mr & Mrs. Todd Kuwitzky
 1106 N 154th Ave Circle
 Omaha, NE 68154-3745

CARNIVAL GLASS — FOR SALE

Elva House • 4714 63rd Ave W. • University Place, WA 98466
 (253) 564-9371

M	EI	Cherry Chain Berry Bowl.	40.00
SM	EI	Open Base Berry Bowl.	40.00
M	EI	Fern Panels Hat	40.00
B	EI	Peacock Tail Hat	50.00
G	EI	Peacock Tail Hat Adv. General Furniture	90.00
M	GI	Apple Blossom 6" Bowl.	30.00
M	GI	Peacock & Dahlia 6" Bowl	70.00
M	GI	Vintage, 6" ICS Bowl.	35.00
G	GI	Vintage, 6" Ruffled Bowl.	45.00

Joe & Winelle Orr • 1705 Camille Way • Cordova, TN 38016
 (901) 756-8594 • E-Mail: jfo13@yahoo.com

A	EI	Fine Cut & Roses Rose Bowl, good feet.	135.00
M	EI	Inverted Feather parfait	60.00
AMB	EI	Dragon & Lotus ICS Bowl, looks red.	250.00
M	EI	Hanging Cherries ICS 7" Bowl, Great	100.00
M	EI	Imperial Grape Decanter, (stopper no fit)	55.00
PRL	EI	Grape & Gothic Arches Pitcher	110.00
H	EI	Grape & Cable sm Berry Bowl.	40.00
PRL	EI	Grape & Gothic Arches Spooner	110.00
G	GI	Leaf & Beads Tri-corner Ribbed Bowl.	80.00
P	EI	Imperial Grape Decanter (no stopper)	95.00

Dennis Runk • P.O. Box 235 • Littlestown, Pa 17340
 (717) 359-7205 • Postage is extra

G	EI	(N) Raspberry Water Pitcher.	290.00
G	EI	(N) Grape & Cable open sugar.	60.00
M	EI	Rising Sun Pitcher	350.00
M	EI	Stipples Rays 7" Plate	40.00
A	EI	Diamond Lace Tumblers each	36.00
Red	EI	Loving Cup 1979 HOACGA Souvenir	75.00
M	EI	Hobnail Spittoon (heat check in base)	145.00
B	EI	Peacock at Fountain Pitcher (broken & glued)	35.00
AO	EI	(N) Peacocks on Fence Ruffled Bowl - 4" crack.	235.00
Red	EI	Orange Tree Mug (Glat Base Chip)	115.00

CARNIVAL GLASS — FOR SALE

Hazel Mayes • 29154 Lakeshore Dr. • Sedalia, MO 65301
(660) 827-2521

PM	Punch Cup Stork	10.00
A	Punch Cup Stork	22.00
G	Punch Cup Wreath Roses, Grape Interior	30.00
M	Butterfly & Berry Sugar (lid only)	20.00
M	Bowl Australian Thunderbird	250.00
A	Bowl Australian Magpie	350.00
A	Bowl Australian Kingfisher	285.00
M	Sm Bowl Australian Magpie	95.00
PO	Nautilus Creamer	165.00
M	Bowl Concord 3 in 1	225.00

Wally McDaniel • 12982 Rough & Ready Rd • Rough & Ready, CA 95975
(530) 432-3378

RB	EI	Rose Show Variant Plate	1,500.00
EB	EI	Hearts & Flowers Compote. Super	450.00
P	EI	Heavy Grape 8½" Plate. Super	225.00
B	EI	Fruits & Flowers Bon-Bon	120.00
AMB	EI	Holly Ruffle Bowl	160.00
W	EI	Peacock at Fountain 8 pc Punch Set (frosty, super, mint)	6,900.00
Clear		Mlsb. Feather & Heart Water Pitcher	225.00
Clear		Mlsb. Hobstar & Feathers Mater 1 C bowl frosted	165.00
P	EI	Scroll Embossed 5½" Ruffled Sause. Super	100.00

Richard A Commini • 5 Milford Lane • Milford, Delaware 19963
(302) 335-3511

A	Luster Rose - Rose Bowl	85.00
AQ	Luster Rose - Rose Bowl	135.00
G	Orange Tree Loving Cup -small crack	55.00
M	Water Lilly & Cattails - 6 pc table set butter base (has a chip)	225.00
M	Butterfly & Berry 6 pc table set	250.00
Pastel M	(N) Grape & Cable Water Pitcher	145.00
Pastel M	(N) Oriental Poppy Tankard Pitcher & 2 Tumblers (rare)	325.00
M	Golden Harvest 8 pc Wine Set	175.00

CARNIVAL GLASS — FOR SALE

Gladys Hutchison • 17630 E Hwy 32 • Stockton, Mo 65785
(417) 276-4119

P	Ripple Vase 12" tall	150.00
B	Horses Heads - ruffled, 7" bowl	65.00
P	Fashion Creamer	170.00
G	Shell & Sand 9" plate (one point damaged)	260.00
B	Dragon & Strawberry bowl (scarce)	600.00
M	Wicker Works and base (Sowerby)	240.00
M	Three Fruits, stippled, 9" plate	260.00
W	Pansy Pickle Dish. Rainbow Highlights	150.00
P	Grape & Cable Sugar Lid	35.00
A	Flute Toothpick Holder	75.00

Mike & Debbie Heintl • 240 Mize Rd. N. • Cullman, AL 35055
(256) 739-0281 call after 6pm est • E-Mail: mheintl@corrcomm.net
Postage & Insurance Extra

AQ	Fenton 10½" FT. Two Flowers Ruffled Bowl (Aqua Marine Marigold Overlay). Rare Color.	450.00
P	Northwood Town Pump. Small flake on Marie	910.00
AO	Beaded Cable Rose Bowl. (one ft. rough)	325.00
P	Dugan Circle Scroll J.I.P. Hat	100.00
M	Dugan Vintage Powder Jar. Complete	85.00
B	Fenton Two Flowers 8½" Deep Footed Bowl	350.00
M	7 pc. Fenton Inverted Coin Dot Water Set	575.00
A	Millersburg Seacoast Pin Tray (damaged)	150.00
CL	Fenton Orange Tree 9½" Plate (with trunk center)	325.00
M	Northwood Good Luck PCE 9" Bowl	210.00

Jerry Rissmiller • 107 Sheeler Ln. • Elverson, PA 19520-9051
(610) 286-9879

P	Imp Grape Punch Cup. Super	65.00
P	474 Punch Cup. Super	65.00
W	4" Rose Spray Compote	80.00
M	Lattice & Points Vase. (lots of blues)	60.00
B	Grape & Gothic Arches Sugar, near elect.	110.00
B	Grape & Gothic Arches Spooner, pretty	85.00
AMB	Embossed Scroll Compote Radium	75.00
B	7" Drapery Var. Vase Squatty	225.00
Pow B	Peacock & Urn Compote. Very pretty	150.00
M	Feather & Heart Tumblers (have 3)	each 50.00

CARNIVAL GLASS — FOR SALE

Dick Wetherbee • 11 Baker Pond Rd. Ext. • Charlton, MA 01507
(508) 248-0038

M	EI	Leaf & Beads 3 ftd Rosebowl, Sunflower inside, Super color & mint . . .	110.00
R	EI	Blackberry Open Lace 6" Rd ruffled Hat Amberina Center, Great .	645.00
S/L	EI	Cosmos Variet 10" bowl, Smoky-Lavender w/ great iridescence .	125.00
Clam	EI	Imperial Grape 10" basket w/ tree bark handle, Beautiful . . .	90.00
M	EI	Peacocks on the Fence 9" ruffled bowl. Beautiful deep color & irid. . .	325.00
PO	EI	Stippled Petals 8½" tri-shaped dome ftd bowl. Super Color & opal .	95.00
W	EI	April Showers 11½" Vase. Great Iridescence inside & out. Stately. .	235.00
Lt B	EI	Beaded Bullseye 11" Vase (has Lite Blue base color w/ Mau overlay) . .	45.00
Amy	EI	Fine Rib 10" Vase. A beautiful Amythest color from top to base . . .	75.00
M	EI	Hobstar Flower 5" compote. Gorgeous dark color. Super . . .	75.00

Alan & Virginia Hodges • 391 Stevens Loop • Lyndonville, VT 05851-8701
(802) 626-5216 or (802) 748-7297

G	EI	Singing Birds 7 piece Water Set	825.00
M	EI	Ten Mums 7 piece Water set. Beautiful.	975.00
IB	EI	PCE Good Luck Bowl.	5,000.00
P	EI	Colonial Lady Vase's (have 2, no damage) Great . . each	850.00
M	EI	Cannonball Pitcher - perfect paint	200.00
G	EI	Feathered Serpent - Berry Bowls (have 4) each	50.00
W	EI	Leaf & Beads Rose Bowl.	575.00
B	EI	God & Home Tumbler	195.00
B	EI	Orange Tree Creamer	75.00
P/A	EI	Large Punch Cups (have 20, no pattern given) each	35.00

Carl & Robin Dodd • 11519 Sage Valley • Houston, TX 77089
(281) 922-5259 or (713) 253-6962 • "From Our Collection"

S		Large Wishbone PCE Bowl. Spectacular	2,300.00
G		Trout & Fly ICS Bowl. Super Satin Irid.	775.00
B		Heart & Vine Flat 9" Plate (Great Iridescence).	550.00
IB		(N) Peacock at Urn MICS. Super Yellow, Pink & Blue . .	1,350.00
P		3 Fruits Medallion Stip. Footed Bowl. Super Nice	275.00
B		Captive Rose 9" Flat Plate. One of the Best	500.00
B		Holly Flat Plate 9". Another Super Fenton Plate.	450.00
CB		Fenton Stretch #220 Pitcher w/ lid. Super Pink & Blue .	325.00
CB		Fenton Stretch #200 Guest Set. Rare & Super	450.00
R		(2) Sets Wide Panel Salad Bowls & Plates	300.00

CARNIVAL GLASS — WANTED

Mrs. Jessie Winkle • PO Box 1117 • Sisters, OR 97759
(541) 549-9343

IG	1980 HOACGA Hat Pin Holder
	1977 HOACGA Hat Pin

Helen Bourdess • 310 Lorraine Dr. • Bellevue, NE 68005
(402) 291-4490

A	Horsehead Medallion Ice Cream Shaped Bowl (collar base)
	Perfect & Excellent Iridescence

Gary Roach • 4500 NW 83rd St. • Kansas City, MO 64151
(816) 741-6412 • E-Mail: gdr2606@aol.com

A	Fashion Punch Bowl Base
A	Fashion Punch Cups (up to 6)
G	Long Hobstar Fruit Base

Alan & Virginia Hodges • 391 Stevens Loop Lyndonville, VT 05851-8701
(802) 626 5216 or (802) 748-7297

A	Broken Arches Punch Bowl only. Silvery is good.
M	Star Medallion Goblet 6¼" or 6½" High
IG	Memphis Punch Bowl only
G	Wreath of Roses Punch Bowl Base or complete
B	Wreath of Roses Punch Bowl only



For those of you who will not have the opportunity to see it, we think you will be interested to learn that every year on the Friday following Thanksgiving, a ceremony is held in Monument Circle – downtown Indy. Christmas lights are strung from the topmost peak of the 110 ft. tall Soldiers'-Sailors' Monument; to the ground in tree shape. Every year since WWII those lights have been customary varied colors we all know and enjoy!

This year, with the advent of Sept. 11, the "powers that be" decided to create a "Memorial Effect", in that , all 4,686 lights are alternating Red, White, and Blue..... There is ALWAYS something new and admirable about living in these great United States!... the essence of PRIDE!

Dean & Diane Fry

Carnival Glass Events

FUNCTION	DATES	REMARKS
Auction	January 5, 2002	Reichel Antique & Auction – Reichel Auction Center, Boonville, MO – (660) 882-5293, e-mail mreichel@undata.com
Convention Auction	Jan. 30 - Feb 3 2002	Sunshine State Carnival Glass Accociation Howard Johnson Ocean Resort, Deerfield Beach (north of Ft. Lauderdale) – Telephone 305-428-2850 - \$119/night landside, \$139/night Oceanside(Rate Is Only Good Until Jan 4 2002). Contact John or Loretta Nielsen – 516-287-1442. Email jnie222@aol.com - Auction by Burns Auction Service.
Convention Auction	February 7 - 9 2002	Tampa Bay Carnival Glass Club – Best Western (Price \$65.00) - 800-362-6777 or Econolodge (Price \$58.00) – 800-799-0352 - Contact Guy Nelson – 941-764-9452 – Auction by Burns Auction Co.(Friday Feb 8)
Convention Auction	February 14 – 17 2002	Texas Carnival Glass Club – Crown Plaza Hotel, Dallas, TX – 972-233-7600 - \$95.00 (deadline for reservations Feb 2) Contact Matzi Thrasher – 281-351-2202 – Email eglady@attglobal.net . Auction by Seeck Auction Co.
Auction	February 23, 2002	Reichel Antique & Auction – Reichel Auction Center, Boonville, MO – (660) 882-5293, e-mail mreichel@undata.com
Convention Auction	Feb. 27 – March 2 2002	SCCGC & SDCCGC Carnival Glass Clubs – Hilton (Airport) Hotel, Ontario, CA – 909-622-2220 – Auction by Seeck Aucton Co. – Contact Judy Maxwell 909-794-4843 for more information.
Auction	March 16, 2002	Reichel Antique & Auction – Reichel Auction Center, Boonville, MO – (660) 882-5293, e-mail mreichel@undata.com
Auction	April 13, 2002	Reichel Antique & Auction – Reichel Auction Center, Boonville, MO – (660) 882-5293, e-mail mreichel@undata.com
Convention Auction	April 25 - 28, 2002	HOACGA Convention – Embassy Suites Hotel (Airport), Kansas City, Missouri – 816-891-7788 - \$98.00/night (RATES ARE ONLY GOOD UNTIL April 10) after that date Room Rate is \$155.00/night. Contact Ann McMorris- 785-478-9004 or Email mcmorris@woodsland.com
Auction	May 18, 2002	Reichel Antique & Auction – Reichel Auction Center, Boonville, MO – (660) 882-5293, e-mail mreichel@undata.com
Auction	June 22, 2002	Reichel Antique & Auction – Reichel Auction Center, Boonville, MO – (660) 882-5293, e-mail mreichel@undata.com