

HOACGA

Heart of America Carnival Glass Assoc. Inc.

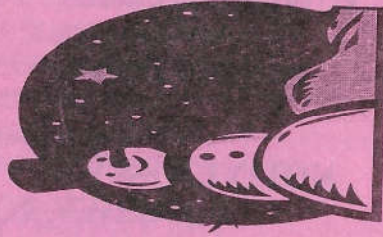
DECEMBER 1999

RETURN ADDRESS

H.O.A.C.G.A.
Tom Limback
P.O. Box 337
Blue Springs, MO 64013-0337



HAPPY HOLIDAYS



FIRST CLASS MAIL
U.S. POSTAGE
PAID
Buckner MO
Permit 03

SPECIAL
HOLIDAY
SALE!!
see pp 70



**HEART OF AMERICA
CARNIVAL GLASS ASSOCIATION**
(Since 1973)

-
- PRESIDENT** ROBERT GRISSOM
7517 Evanston
Raytown, Missouri 64138
PHONE: 1-816-356-5320
EMAIL: bobimocg@aol.com
- VICE-PRESIDENT** GENE COX
P.O. Box 42
Blue Mound, Kansas 66010
PHONE: 1-913-756-2323
- TREASURER** CLIFF BALL
572 W. Park Street
Olathe, Kansas 66061
PHONE: 1-913-782-0415
- SECRETARY** ANN McMORRIS
*Send New & Renewal Memberships, Address
Changes, Order for Educ. Matl. and Souv.
All checks payable to HOACGA*
Post Office Box 4361
Topeka, Kansas 66604-0361
PHONE: 1-785-478-9004
email: mcmorris@woodsland.com
- BULLETIN SECRETARY** TOM LIMBACK
*Send Ads & Articles for Bulletin
by 28th of month.*
Post Office Box 337
Blue Springs, MO 64013-0337
PHONE: 1-816-373-3162
-

MEMBERSHIP DUE DATE:

Your Membership due date is located on the bulletin mailing label after your name on the first line. Such as:
Thomas Limback 100
Tom's membership expires January 1st, 2000.

NEW FEATURES

This month the HOACGA bulletin introduces two new features. They are a color page centerfold (will appear quarterly) and a section called "Calendar of Events". Your comments on these new features are welcomed and appreciated.

The color page centerfold is being inaugurated to better accentuate the color, the iridescence, and the patterns of carnival glass which is lost in black and white photos. Various pieces of carnival glass will be featured focusing on a particular pattern, design, color, theme, etc. with accompanying text. Dave Doty will provide the photographs and professional expertise in formatting the centerfold layout. We greatly appreciate Dave's efforts.

It is HOACGA's policy to print an ad for a carnival glass event one time in the bulletin. The Calendar of Events section will allow an abbreviated listing of the event each month until the event occurs. The Calendar of Events section is an auxiliary feature in the continual support of the event once the ad has been placed.

Events associated with carnival glass sponsored by a member of HOACGA, such as conventions and auctions, may be listed. A specialized ad is not required to have an event listed in the Calendar of Events section. The name of the event, the date of the event, a contact individual and the individual's mailing address and/or telephone number and/or email address will be included in the listing. The listing is free. Send the information to the HOACGA Bulletin Secretary.

HAPPY HOLIDAYS

The HOACGA Board of Directors want to take this opportunity to wish all members a very Merry Christmas and a Happy New Year. We hope that you and your family will be able to enjoy the Holiday Season together. May the spirit of Christmas bring you peace and joy.

Have you thought about what we will be able to experience this New Year? We will witness and be a part of a very unique historical time. At this time in history, we will witness not only the start of a New Century, but also the start of a New Millennium.

We hope that the Y2K bug moves on by and does not bite any of us.

Bob Grissom - Gene Cox - Cliff Ball
Ann McMorris - Tom Limback

IN MEMORY

We are saddened to report the death of Elaine Benedict, November 7, 1999. She and her husband Marty are long time HOACGA members. They have helped at convention registration for the past 5 years. Elaine has helped with the recent HOACGA pattern notebook sections. She was an avid collector of old carnival glass and contemporary Fenton glass. She leaves her husband Marty, her Mother, a Daughter and two Grandchildren. We extend our sympathy to the entire family. If you wish to drop Marty a note, his address is:
Marty Benedict, 5161 Chessie Circle, Haltom City, TX 76137-5503

HELLO FROM IOWA

By Vicki Gearhart

Had a wonderful time at the Seeck Auction in Mason City, October, 30th. Ganon was quite the little candy distributor. For those of you not there this was the night before Halloween, so Ganon (Jim & Jan's son) was strutting around with his pumpkin full of candy passing out treats to whoever was close. They were good too. I got a little handful from him. What a beautiful fall day it was here in Iowa.

The auction had some very pretty glass, nice color and iridescence and not much damage, if I recall right. Although one amethyst Concord plate was broken in half and reglued. The glue did show on the backside of the plate, but what a beautiful plate from the front side. It will display as nice as a perfect one. Plus this plate had really "pretty iridescence", prettier than a lot of the perfect ones. "Good buy Dave".

At the beginning of the auction my husband said "If you wanted to own a table set, there is the perfect one here". It really had good rich marigold color, the pattern was Northwood's Grape and Gothic Arches. Anyway while he was away from his chair during the auction, just walking around to loosen up the stiff legs and tired hiney, the set came up for sale. He was nowhere around, I thought he was probably outside, it was such a nice day. So I thought wouldn't this be a great surprise birthday gift, his birthday is in November. So I was the lucky bidder. So I quickly wrapped up the items and put them into a bag, and quickly went to place the items in the car. Guess what? There he was standing at the back of the room, smiling and watched me bid on the set. Surprise was on me I guess. I can never ever get one by him. Maybe someday.

I have noticed at the auctions this year that prices seem to be on the lower end of average for the most part. A lot of good buys. It seems to be a buyer's market right now. That may not be true, but it is my opinion. There are usually a few surprise high dollar values, but that is just because two people have their hearts set on taking the item home. I am glad I am the buyer and not the seller. Although the people selling the glass, most likely bought it when prices were a lot lower and will have a nice profit to show for their collections.

Our cabinets are very full now, so it's time to slow down on the buying. I don't know if we can, but we really should. We have been collecting since June, 1997 and are very happy with our collection. Of course there are more items we want but where to put them. Maybe we can sell a few pieces at a convention next year and make room for future purchases.

Conventions are great fun, I enjoy the people most of all. I really miss the friends we have made. (Hi Ted, hope your feeling 100% again.) I plan to do one more auction this year, Mickey's in Booneville - it's always worth the trip.

WATER LILY & CATTAILS TUMBLERS

By Alan & Lorraine Pickup



Collecting this tumbler pattern, made by the Fenton, Northwood and possibly Dugan/Diamond glass companies could become a collection of tumblers within a collection. We are not tumbler people, but like all glass collections tumblers do play a role. Their size, easy availability and many times their appealing patterns make it hard not to add some tumblers to any glass collection. When we say easy availability, we certainly don't mean to imply that "all tumblers are created equal." They come in all price ranges from a few bucks to "big bucks", depending on their relative rarity.

The three Water Lily tumblers pictured here are all Fenton products. From left to right, a green opal, (also made in blue opalescent), marigold iridescence and a rare chocolate glass example. Marigold seems to be the only carnival color found for Fenton's Water Lily. These are easy to recognize from other makers' tumblers because they have the basket weave motif below the water lily pads. Slight variations can be found probably inasmuch as the moulds were cleaned and polished periodically during use, causing wear in the mould and consequently small variations. And more than one mould was surely used.

Northwood tumblers carry the (N) signature and have faint dashed lines below the lily pads symbolizing water. Marigold tumblers are quite common. The late John Britt reported that "three purple tumblers, two in blue and possibly five or six in pastel marigold are known to exist." Carl Burns book lists only marigold and cobalt blue in carnival. Opalescent Northwood tumblers are also known.

That leaves us with the "other" tumblers, made by who? They are similar yet different from Northwood's. Northwood's has a groove about three quarters of an inch below the rim. The variant has a raised ring below the sleeve ring mould line (top cap-mould?), instead of a groove. Found in marigold and at least blue opalescent. The marigold tumblers are easily found in the St. Louis area antique malls.

So you may find out that putting together a complete collection of Water Lily tumblers can be a real challenge. And along the way you may discover an unheard of variant. That is what collecting is all about.

ON THE AUCTION TRAIL WITH CHUCK

By Chuck Kremer

November 13, 1999: I left a little earlier than usual for the drive to Boonville, Missouri, in order to antique along the way. I had word there was a butter dish in a mall in St. Louis that I could use in my collection. Alan and Lorraine Pickup accompanied me to the mall - the butter dish was still there, but everything considered I decided to leave it there.

The Midwest was very dry and having record temperatures, so the drive to the Reichel auction was a pleasant one. I stopped in for the preview and saw some very desirable pieces and the prospective bidders to go with them. Mickey ends the preview at 6 PM, so the evenings at Boonville are usually spent visiting with carnival friends at the motels. This time on one visit I bought a nice table set for my collection. This set plus the amethyst Acorn Burrs spooner I bought in the auction made this trip worthwhile for me.

Is there something we might call the "Fall Syndrome" regarding fall sales and the prices realized? For years I have heard fall auctions are not as strong as those earlier in the year. I guess the theory is that we are tired, have spent our yearly allowance or the holiday spending faces us. If that is true, this auction may have followed this pattern to some degree. The good pieces sold very well as evidenced by the \$2,300 blue Apple Tree pitcher, \$14,000 green 18½" Millersburg Ohio Star vase and the \$8,500 amethyst Wild Blackberry plate. It seemed the lower end pieces were a tough sell and the mid-range pieces were all over the lot. There were some pieces that found new homes at very favorable prices.

I spent Saturday night with friends in St. Louis, so overall this weekend was enjoyable and a fitting way to end my auction going for this century.

SHOPPIN' & HOPIN'

By Galen & Kathi Johnson

It's strange how your job can take you to different places. And it's strange how some things just seem to be meant to happen...

Anyway, I'll start this from my boss approaching me at work, telling me they want to send me to Pascagoula, Mississippi to do some repairs on a Navy ship. I flew on Sunday, figuring they would need me to start work on Monday, only to get there and find out my boss had forgotten that Monday was a government holiday. After finding that out, if you can't work: lets go antiquing! I drove around to the local shops seeing this and that. In a shop between Pascagoula and Biloxi (called Mockingbird Antiques) I walked in, talking to the owner, telling her I liked and collected old carnival glass. She was telling me that she didn't have anything of real significance, just this water pitcher that she didn't know the pattern of, and a couple other pieces. If I remember correctly, one was a ruffled peacock tail bowl and the other a Louisa rose bowl. Back to the pitcher: I'd never seen that pattern before. It looked like crossed propellers with a filler having small squares sort of like Memphis. No books with me, any idea of the pattern name, and it seems like she wants an awful lot of money for this glass. But she does really want to sell it, and we agree on a price. So now knowing the pattern, I leave not knowing whether I made a good deal or if I got a new piece of carnival for the price of old. While we had been talking, I asked her where she had gotten the pitcher (trying to determine age). She said she had bought it from a man who demolished houses, and he had told her he found it in one of the houses he was about to demolish. (I love hearing the stories about how people got the glass!) Now we need to figure out the pattern: anybody out there have any ideas?? Well, keep reading, we'll get there; but it does take a while.

It was near the end of the day, so I go back to the hotel to call Kathi and tell her about my wonderful 'what is it?' find... she's got the books; she'll tell me. Have any of you ever tried to explain patterns over the phone to someone who doesn't know what you're talking about? You know the geometric patterns like Fashion or Crab Claw or Octagon. Kathi wanted to know if the propeller would actually turn! I don't think she actually believed me! She kept saying, "I can't find anything like that in here." Finally after a 45-minute conversation, we give up. It will just have to wait until I get back home in a few weeks.

Well, I finally made it back home, and Kathi looks at the pitcher. Now we can start looking at the books. Does anybody out there know what the pattern is yet? Could you give me a little help???

This isn't going to be easy, as a matter of fact, it could be pretty tough. You know, they must have had tumblers to go with this pitcher? You'd think so, wouldn't you? What better place to look for the pattern than in a tumbler book? Why didn't we think of that before? We pull out the HOACGA Educational Series book 2 (with articles by John Britt) and start paging through. Finally, in the S's (yes, I said the S's), we found the pattern. Sydney. And there were tumblers. He talked about two different sized tumblers. After several weeks of looking, we finally know the pattern of the pitcher: it's a Sydney. The next thing is: are there others? So we look in Bill Edwards cg book to see what he had; no listing. We check the Mordini price guides: has one ever sold? Nope, just a tumbler some time back.

We are the proud owners of a Sydney pitcher, but we've never found out how many there are out there (if there are others). It has very pretty iridescence and we're happy to have it in our collection.

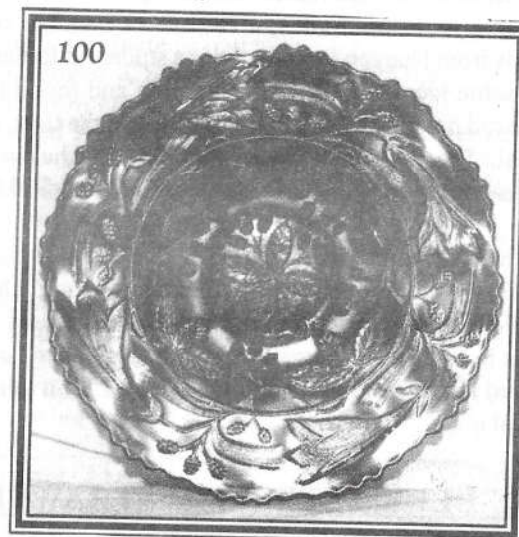
There is one sad note to this story: the next time I went to visit that antique shop in Pascagoula it was to discover that it had burned to the ground. All that was left was rubble. I'm glad I had the opportunity to purchase this piece the first time I went down. And remember, "Yesterday is history, tomorrow is a mystery, and today is a gift; that's why it's called the present."

Until next time, keep shoppin' and hopin'!

HOACGA CARNIVAL GLASS
CONVENTION 2000
APRIL 27, 28, 29, & 30

FENTON 9¼" AMETHYST
WILD BLACKBERRY PLATE

By Bob Grissom



Item Number 100 on the November 13, 1999 Carnival Glass Auction by the Reichel Auction Co. is an "ULTRA RARE - FENTON 9¼", AMETHYST, WILD BLACKBERRY PLATE - 1 OF A KIND". The "Wild Blackberry" patterns has only been known in a bowl before.

This plate came from a Mr. Murdock of Buckie, Banffshire, Scotland. Mr. Murdock had inherited the plate along with a Northwood Ribbed Strawberry bowl from his Dad. He did not know anything about either piece. A friend of his told him about Mickey Reichel's Auction. He then corresponded with Mickey via the Internet about auctioning the two pieces for him. Mr. Murdock shipped the two pieces and only insured them for \$50.00. The plate was auctioned on Saturday, November 13. The final bid was \$8,400.00. Mr. Murdock is a fisherman, but after selling the plate he may start setting his hooks for more "Wild Blackberry" plates. Congratulations to the new owner of this very rare plate.

Item 101 on the sale bill was the Northwood Ribbed Strawberry bowl. Its selling price was \$75.00.

ANOTHER ONE-OF-A-KIND

By Bob Grissom

Item No. 163 on the same auction list was a "EM. G - ULTRA RARE - 15½" SWUNG MLBG, OHIO STAR VASE - SUPER QUALITY". The vase was found in an antique shop by Lane Booker, a HOACGA member (no relation to Carl Booker). Lane is from Dugger, Indiana and is a student at Indiana State University. He was doing some local antique mall shopping and found this vase, which he recognized. He did not know the rarity of the vase at the time, but did recognize it as being unusual. The price on the vase was \$60.00 and he knew it was worth that amount. The selling price of the vase at the auction was \$14,000.

Lane said that he wanted people to realize that carnival glass bargains are still to be found. This was quite a welcome find for a young man who is attending college. It should help pay for some of the necessary expenses. Keep looking; you may be the next to find such a bargain. Congratulations to both Lane who found it and recognized it as a good piece and to the buyer for owning such a beautiful piece of carnival glass.

ICE BLUE - STIPPLED STRAWBERRY

By Bob Grissom

Jim and Jan Seeck attended the Atlantic City Antique Show in October of 1998. When they entered they were given a card to fill out for a drawing. They were lucky enough to win a free admission and motel stay at the 1999 show.

With their free pass and motel stay in hand they attended the show again in October. Jim and Jan are also interested in and collect Disney memorabilia. When they entered the antique show they were going directly to a dealer that had Disney items. They thought they knew where the booth was, but they went down the wrong aisle. On their stroll down the wrong aisle a piece of carnival glass, in a case, just happened to attract their attention. It was an ICE BLUE, STIPPLED STRAWBERRY, PCE BOWL. Jim said that he just stood looking at the bowl for several minutes until Jan said that if he was not going to ask to see it she was. The dealer said they had just put the bowl in the case not more than 15 minutes before. In this instance it paid not to know where they were going.

Editors note: If you have a story of a unusual find please send the information so it can be shared with other collectors. We all like to know what some of the recent finds are.

VASES --- FIFTH SECTION

Four Sections of the Vase Section of the HOACGA Notebook have been completed. The fourth section ended the alphabetical listing through the "Tree Trunk" pattern. The fifth section will start with the "Triands" pattern and will then complete the alphabet through "Z". I presently have photographs of thirty eight (38) patterns within "Triands" through "Z" but I do not have a photograph of the "VINING TWIGS", "WAFFLE BLOCK", or "ZOOM" vases (if I had them at one time, they are now misplaced). If anyone has these vases I would appreciate you photographing them and sending me a copy for the fifth Vase section.

In the past few years, many Foreign vase patterns have been identified. As part of this fifth vase section, I will include a picture and information of these vases that have not previously been shown. I do not have knowledge of all of the foreign vases and need some help. Below is a listing of the patterns that I have already included in previous vase sections or for which I presently have a photograph. If you know of, or you have a vase that is not listed, please send a photograph of it, or let me know the location of the vase.

African Shield	Lattice & Leaves
Bond	Lily
Circle Squared	Manchester
Classic Arts	Marguerite
Column Flower	Moonprint
Comet	Peeble & Fan
Curved Star	Pinwheel
Derby	Princeton
Diamante Stars	Ring of Stars
Diamond Cut	Rose Garden
Diamond Point Spiral	Rose & Drape
Elephant	Seagulls
Firecone	Sowerby Drape
Fish	Starburst
Floral Sunburst	Sunflower & Diamond
Footed Prism Panel	Tartan
Giant Lily	Tennessee Star
Inca	Texas Tumbler
King James	Towers
Kulor	Wide Panel & Diamond

RARE 9" CARNIVAL PLATES

By Vicki Gearhart



Green Trout & Fly Millersburg plate with turned up edge

The following is the auction prices realized for 9" plates from 1989 to 1999. I have listed patterns & color if they sold 9 times or less in this ten year period.

Pattern	Color	Maker	Auction price realized for RARE 9" Carnival Plates
Absentee Dragon	Marigold	Fenton	
Autumn Acorn	Marig & Amy	Fenton	
Birmingham Age Herald	Amethyst	Fenton	950-1,600-1,200-1,500-2,100-1,900-3,500-825 chip-2,250
Cobblestone	Amethyst	Imperial	(edges turn up slightly)
Concord	Green	Fenton	1,300 uneven irid. - 3,000 - 5,100 - 6,750 - 4,200 elec - 1,800
Concord	Lavender	Fenton	2,900
Concord	Marigold	Fenton	950 dmg- 1,700- 1,200 dmg- 2,300- 850 flaw- 600 epx- 1,500 chp- 1,900
Coolmees (Heart & Vine Adv)	Marigold	Fenton	
Daisy Wreath	Blue Opal	Westmoreland	
Dragon & Lotus	Peach Opal	Fenton	600 one known in 1992
Dragon & Lotus footed	Amethyst	Fenton	250 poor irid.
Dragon & Lotus	Marigold	Fenton	2,700 - 1,800 - 2,600 - 2,600 - 1,300 - 2,500 - 3,300 - 600
Elegance	Ice Blue	N - Fostoria?	3,500 in 1994
Embroidered Mums	Marigold	Northwood	
Embroidered Mums	White	Northwood	1,000 flat sold one known in 1993
Fanciful	Blue	Dugan	(rare if truly flat)
Feather Stitch	Marigold	Fenton	(edges turn up slightly)
Field Thistle	Marigold	US Glass	400 - 135 - 425 in 1996
Flute and Cane	Clambroth	Imperial	

Four Flowers Vt.	Emerald Green	European	500 - 610 - 400
Four Flowers Vt.	Lavender	European	235 in 1991
Four Flowers Vt.	Amber	European	400 - 230 honey amber
Good Luck	Ice Blue	Northwood	10,000 basketweave ext. in 1998
Good Luck	Ice Green	Northwood	
Good Luck	Renninger Blue	Northwood	2,200 stippled sold in 1992
Good Luck	Horehound	Northwood	525 - 1,100 - 500
Good Luck	Electric Blue	Northwood	8,500 - 3,500 - 4,000 - 4,500 - 3,300 - 4,000
Good Luck	Emerald Green	Northwood	5,000 - 3,100
Good Luck	White	Northwood	
Grape & Cable	Smoke	Northwood	775 - 500
Grape & Cable footed	Ice Green	Northwood	150 - 750 - 800 - 750 - 675 - 525 - 450 - 500 - 400
Grape & Cable footed	Ice Blue	Northwood	
Grape & Cable stippled	IB & Ren. Blue	Northwood	
Grape & Cable stippled	Aqua/Teal	Northwood	2,700 - 3,000
Grape & Cable stippled	Emerald Green	Northwood	1,650 - 1,950 - 600 chip - 950 - 1,000 - 2,800 - 2,900 - 2,400
Grape & Cable Vt. Stippled	Aqua/Teal	Northwood	2,250 flaw - 1,950 - 3,900 - 5,100 (1991 - 1992)
Greek Key	Blue	Northwood	700 - 1,900 - 2,200 electric in 1990 - 2,800 - 800 - 700 - 1,100
Hearts & Flowers	Sapphire	Northwood	
Hearts & Flowers	Ice Green	Northwood	4,500 sold in 1990
Hearts & Flowers	White	Northwood	2,850 - 2,750 - 2,550 - 2,600 - 2,750 - 3,000 - 2,200 - 3,500
Hearts & Flowers	Lime Green	Northwood	5,500 - 3,400 flaw - 5,750 - 3,400 - 3,000
Holly	AO & Red & Celes	Fenton	
Holly	Teal	Fenton	500 poor color - 1,000 in 1997 - 525
Holly	Lavender	Fenton	375 in 1997
Holly	Black Amethyst	Fenton	825 - 1,300 - 2,200 - 750 - 800
Holly	Smoke	Imperial	240 in 1988
Imperial Grape	Aqua	Imperial	400 in 1997
Imperial Grape	Amber	Imperial	500 - 600 - 1,000 - 200 silvery - 1300
Pattern	Color	Maker	Auction price realized for RARE 9" Carnival Plates
Leaf Chain	Ice Green	Fenton	
Leaf Chain	Amethyst	Fenton	3,000 two known in 1994
Leaf Chain	Aqua Opal	Fenton	
Lotus & Grape	Aqua & Marig.	Fenton	
Lotus & Grape	Blue	Fenton	575 - 575 - 1,000 - 1,350 - 1,300 - 350 poor irid - 2,100 - 1,900
Nippon	Ice Blue	Northwood	9,000 one known in 1997
Nippon	White	Northwood	575 chip - two known in 1992 - 1,350
Nippon	Amethyst	Northwood	1,000 - 1,050
Nippon	Green	Northwood	1,300 - 500 - 1,300 - 600 - 550 chip - 750 - 875
Open Edge 2 Row	Blue	Fenton	1,500
Open Edge 2 Row	Marigold	Fenton	200 damaged
Orange Tree	Aqua Opal	Fenton	15,000 flaw
Orange Tree	Yellow	Fenton	400 chip in 1990
Orange Tree	Ice Green	Fenton	1,600 poor irid. - 16,000 with trunk - 7,000 flaw three known in 1995
Orange Tree	Peach Opal	Fenton	
Orange Tree	Amethyst	Fenton	1,550 silvery - 4,500 with trunk
Orange Tree	Green	Fenton	5,250 - 2,550 chip - 2,000 silvery - 3,100 - 4,100 trunk - 1,950 silvery
Peacock and Grape collar base	Blue or Elec Blue	Fenton	350 - 1700 - 3,000 electric - 2,100 electric
Peacock and Grape collar base	Amberina	Fenton	750
Peacock and Grape footed	Amethyst	Fenton	260
Peacock and Grape collar base	Green	Fenton	
Peacock at the Urn	Amethyst	Fenton	
Peacocks (on the fence)	White - decorated	Northwood	1,100 enamel decorated
Peacocks (on the fence)	Horehound	Northwood	600 - 1,800
Peacocks (on the fence)	Smoke	Northwood	3,100 in 1989 - 1,900
Peacocks (on the fence)	Renninger Blue	Northwood	1,500 - 1,250 - 1,700 - 1,100 - 1,300 - 2,000 - 1,500 - 2,400
Peacock Tail	Marigold	Fenton	1,150 - 1,550 - 1,200 - 625 chip
Persian Medallion	Green	Fenton	3,250 chip three known in 1993 - 4,250
Persian Medallion	White	Fenton	850 - 2,450 - 3,000 - 2,100
Persian Medallion	Electric Blue	Fenton	625 - 1,300 - 1,550
Persian Medallion	Marigold	Fenton	245 - 195 - 550 - 400 - 1,900 - 3,250
Peter Rabbit	Amethyst	Fenton	
Peter Rabbit	Blue	Fenton	
Peter Rabbit	Marigold	Fenton	2,500 - 1,800 - 6,000
Peter Rabbit	Green	Fenton	2,100 ep- 6,500 - 2,750 ch- 6,500 - 2,100 ch- 3,700 ch- 2,200 ep-

Plaid	Marigold	Fenton	3,750 - 2,250
Plaid	Blue & Amethyst	Fenton	(edges turn up slightly)
Poppy Show	AO & Hore	Northwood	
Poppy Show	Green	Northwood	2500 ch- 2300 ch- 6500- 2500- 5750 ele- 2200 buf- 3000 dye- 7000 - 3500 buf
Roses and Greek Key	Smoke & Marig.	?	
Rose Show	Aqua Opal	Northwood	11,000 base crack one known in 1990
Rose Show	Ice Green	Northwood	3,800- 2,200- 5,000- 1,000 chip- 1,750 chip- 2,000 chip- 3,300- 2,700- 3,000
Rose Show	Ice Green Opal	Northwood	3,000 chip - 11,000 - 10,750 - 6,100 chip - 9,500
Rose Show	Custard	Northwood	12,000 - 7,000 - 16,500 - 5,750 - 6,500 not ird - 3,000 chp- 1,750 chp
Rose Show	Lime Green	Northwood	3,400- 900 chp- 1,050 chp- 3,700- 2,200 repair- 1,100 chp- 3,250- 3,750
Rose Show	Emerald Green	Northwood	3,600- 2,300 ch- 7,500- 2,250 ch- 2,600 ch- 3,750 ch- 7,500- 6,000- 6,500 epv
Rose Show Variant	Renniger Blue	Northwood	3750- 1550 ch- 550 repair- 550 ch- 650 dmg- 3000 - 3600- 1300 silv- 3750
Rosiland	Amethyst	Millersburg	(edges turn up slightly)
Pattern	Color	Maker	Auction price realized for RARE 9" Carnival Plates
Round Up	Lavender	Dugan	600
Scroll Embossed	Aqua	Imperial	150 - 225 - 195
Scroll Embossed	Lavender	Imperial	475 in 1998
Shell	Marigold	Imperial	700 - 1,400
Shell	Smoke	Imperial	800 - 800 - 875 - 625 - 725 - 800 - 400 chip
Shell and Sand	Smoke	Imperial	165 - 275 - 350 - 750
Shell and Sand	Marigold	Imperial	475
Shell and Sand	Green	Imperial	300 - 285 - 550 - 800
Seaweed	Green & Marig.	Millersburg	(edges turn up slightly)
Seaweed	Amethyst	Millersburg	2,200 (edges turn up slightly)
Stag and Holly, footed	Amethyst	Fenton	3,250 epoxy in 1994
Strawberry	Lavender	Northwood	275 - 500 in 1994
Strawberry	Peach Opal	Northwood	800 - 900 - 1,500 - 420
Strawberry, stippled	Blue	Northwood	
Strawberry, stippled	Ice Blue	Northwood	23,000 one known in 1995
Strawberry, stippled	Marigold	Northwood	625 - 700 - 350 - 1,550 - 1,600 - 825 chip - 1,900
Thistle	Marigold	Fenton	3,500 - 6,700 two known in 1994
Thistle	Amethyst	Fenton	4,100 - 1,900 stain - 4,100 - 3,500 - 4,750 - 2,500 - 2,600 - 2,900
Three Fruits	Electric Blue	Northwood	700 - 1,200 - 475
Three Fruits	Ice Blue	Northwood	
Three Fruits	Emerald Green	Northwood	750
Three Fruits	Teal	Northwood	1,800 - 800 chip
Three Fruits	Aqua	Northwood	1,000 wear on fruit in 1992
Three Fruits	Horehound	Northwood	600 - 2,900 - 300 - 2,400 - 460
Three Fruits	Lavender	Northwood	300 - 425 - 185
Three Fruits, stippled	Ice Green	Northwood	
Three Fruits, stippled	Ice Blue	Northwood	5,000 wear on fruit - 6,500 wear on fruit
Three Fruits, stippled	Lime Green	Northwood	4,500 two known in 1990
Three Fruits, stippled	Green	Northwood	200 chip - 4,000 - 2,250
Three Fruits, stippled	Violet	Northwood	850 in 1997
Three Fruits, stippled	Horehound	Northwood	950 in 1993
Three Fruits, stippled	Sapphire	Northwood	1,000 silvery - 2,300 - 1,900 - 2,900
Three Fruits, stippled	Aqua	Northwood	1,600 - 2,100 with marigold overlay - 2,900 - 1,300 - 1,700
Three Row Open Edge	Ice Blue	Fenton	
Three Row Open Edge	White	Fenton	
Trout and Fly	Green	Millersburg	(edges turn up slightly)
Trout and Fly	Amethyst	Millersburg	6,250 two known in 1991 (edges turn up slightly)
Trout and Fly	Lavender	Millersburg	1,000 damaged two known in 1990 (edges turn up slightly)
Two Flowers, footed	Marigold	Fenton	600 - 525 - 675 - 1,700
Vintage	Blue	Fenton	1,500 in 1989
Vintage	Purple	Fenton	4,500 in 1996
Vintage	Marigold	Fenton	1,400 - 3,900 - 2,500
Wild Blackberry	Amethyst	Fenton	
Wishbone, footed	Ice Green	Northwood	500 in 1997

Results of the Seck Auction, Mason City, Iowa

October 30th, 1999

- 25__ 1. Butterfly bon bon - green
X__ 2. Flowering Dill crimped edge JIP shaped hat - marigold
40__ 3. Fashion punch bowl & 4 cups, no base - marigold
15__ 4. Windmill pickle dish - marigold
30__ 5. Little Flowers 10" ruffled bowl - marigold
55__ 6. Wide Panel round bowl - red stretch
10__ 7. Fenton's Peacock at Urn goblet shaped compote - marigold
45__ 8. Coal bucket, Sov. Big Stone City, SD - light marigold
25__ 9. Concave Diamonds tumbler - celest blue
900__ 10. N's Peacock at Urn master IC bowl - ice blue - super pretty, highly desirable, nice & flat
450__ 11. N's Peacock at Urn master IC bowl - white - flat & pretty, a nice one
200__ 12. N's Peacock at Urn master IC bowl - marigold - scarce & desirable, nice
25__ 13. Star Medallion milk pitcher - smoke
20__ 14. Star Medallion milk pitcher - marigold
50__ 15. Fenton's Fine Rib 10" vase - vaseline - very nice
10__ 16. Fenton's Thin Rib 11" vase - marigold
115__ 17. Orange Tree Orchard water pitcher - white - very scarce, has 1/2" heat check were handle applies
25__ 18. Grape & Cable punch cup - white
55__ 19. Grape & Cable breakfast set - marigold - nice set
475__ 20. N's Corn vase w/plain base - marigold - very rare & desirable, nice
210__ 21. N's Corn vase w/stalk base - green - has split on seam at base
35__ 22. Birds & Cherries ruffled compote - amethyst
25__ 23. N's Stippled Rays large ruffled bowl - purple - silvery
55__ 24. Central Furniture Company Peacock Tail ruffled hatshape - green
1000__ 25. Orange Tree & Scroll tankard water pitcher - blue - super pretty, even color side to side, top to bottom, beautiful!
150__ 26. Orange Tree & Scroll tumbler - blue
550__ 27. Orange Tree & Scroll tankard water pitcher - marigold - extremely rare pitcher, nice even color
85__ 28. Orange Tree & Scroll tumbler - marigold
35__ 29. Six Petal ruffled bowl - peach opal
55__ 30. Leaf & Beads rosebowl - aqua opal - cracked
175__ 31. Leaf & Beads rosebowl - blue
175__ 32. Leaf & Beads rosebowl - purple
235__ 33. Mary Ann vase - amethyst
50__ 34. Vintage tri-cornered shaped sauce - blue - pretty
250__ 35. Heavy Iris 7 pc. tankard water set w/straight top - marigold - not many with straight top around, one of two that I've seen
225__ 36. Heavy Iris 7 pc. tankard water set - marigold - pretty
40__ 37. Thin Panel 7" JIP vase - peach opal - minor pinpoint on base, pretty
100__ 38. Constellation ruffled compote - white

60__ 39. Rose Spray JIP shaped compote - white
 300__ 40. Palm Beach water pitcher - honey amber - scarce & nice
 25__ 41. Wild Rose nut bowl - green
 40__ 42. Star of David ruffled bowl - amethyst - silvery
 50__ 43. Holly 3 in 1 edge bowl - blue
 60__ 44. Scales tri-cornered shaped bowl - peach opal - very pretty w/lots of opal
 185__ 45. Lattice & Poinsettia ftd ruffled bowl - purple - silver
 40__ 46. Folding Fan crimped edge compote - peach opal
 90__ 47. Fine Cut & Roses rosebowl - ice blue - normal nicks on feet
 400__ 48. Drapery candy dish - blue - super pretty, a nice piece
 30__ 49. Stippled Petals ruffled bowl - peach opal
 1100 50. Peacocks PCE bowl w/ribbed back - ice blue - extremely rare color, not many around, scarce & desirable!
 850__ 51. Peacocks PCE bowl w/ribbed back - lavender - super pretty, nice bowl
 550__ 52. Peacocks PCE bowl w/ribbed back - blue - very pretty bowl, has electric highlights
 550__ 53. Peacocks PCE bowl w/ribbed back - purple - very scarce
 15__ 54. Scroll Embossed ruffled compote - green
 150__ 55. Raspberry milk pitcher - purple - scarce & desirable
 115__ 56. Lined Lattice 10" ftd vase - purple
 10,2 57. Pastel Swan salts (2) - ice green - choice
 65,20 58. Pastel Swan salts (2) - pink - choice
 20__ 59. Stippled Petals tri-cornered shaped bowl - peach opal
 550__ 60. Hearts & Flowers ruffled compote - aqua opal - very pretty
 85__ 61. Hearts & Flowers ruffled compote - marigold - scarce
 135__ 62. Hearts & Flowers ruffled compote - white
 60__ 63. Spiralex 12" vase - peach opal
 20__ 64. Smooth Rays 9" plate - smoke
 425__ 65. Rising Sun water pitcher - blue - very scarce in this color, not many around & nice
 275__ 66. Rising Sun water pitcher - marigold - scarce
 80ea 67. Rising Sun tumblers (3) - marigold - choice
 50ea 68. Rising Sun juice glasses (2) - marigold - choice
 10__ 69. Stippled Rays 6" plate - marigold
 750__ 70. Enameled Forget-Me-Not 5 piece tankard water set - amethyst - super pretty & highly desirable, some of the nicest of the enamels
 400__ 71. Enameled Forget-Me-Not tankard water pitcher - blue - also scarce & desirable
 10__ 72. Enameled Forget-Me-Not tumbler - blue
 15__ 73. Lotus & Grape card tray shaped bon bon - marigold
 105__ 74. Windflower ruffled bowl - amber - extremely rare color for this bowl, minor pinpoint on edge, pretty
 550__ 75. Peacocks 9" plate w/ribbed back - purple - super pretty example, nice!
 650__ 76. Peacocks 9" plate w/smooth back - green - very rare color, has nice gold irid.
 225__ 77. Peacocks 9" plate w/ribbed back - marigold - very scarce & desirable
 225__ 78. Peacocks 9" plate w/ribbed back - ice green - scarce, has silvery irid.
 20__ 79. Inverted Strawberry 7" round bowl - green

350__ 80. Basketweave Open Edge JIP basket - red - cherry red color & pretty, looks red!
 55,45 81. Basketweave Open Edge JIP shaped baskets (2) - vaseline - choice
 35__ 82. Grape Delight nut bowl - white - mold roughness on feet
 45__ 83. Grape Delight nut bowl - purple
 110__ 84. Thin Rib & Drape 5 1/2" vase - marigold
 105__ 85. Grape & Cable cvd compote - purple - chip on lid
 35__ 86. Target 10" vase - peach opal - opal goes all the way to the base, unique, minor nick on base
 35__ 87. Beaded Cable rosebowl - aqua opal - scarce, minor nicks on foot(cracked)
 165__ 88. Beaded Cable rosebowl - blue - nice
 65__ 89. Beaded Cable rosebowl - marigold
 35__ 90. Open Rose 9" plate - amber - nicks on roses
 45__ 91. Open Rose 9" plate - marigold
 450__ 92. Imperial Grape 7 pc. wine set - purple - very pretty set, a dandy!
 35__ 93. Imperial Grape 3 pc. wine set - marigold(stopper cracked)
 35__ 94. Imperial Grape 3 pc. wine set - green - no stopper
 500__ 95. Rose Show ruffled bowl - marigold - dark & pretty, a very nice example
 25__ 96. Orange Tree shaving mug - blue
 40__ 97. Octagon large size water pitcher - marigold - large chip out of rim of base
 55__ 98. Persian Medallion ruffled compote - marigold - scarce & pretty
 10__ 99. Lotus & Grape ftd round sauce - marigold
 1600 100. Wishbone chop plate - marigold - very pretty plate w/pretty irid., rare plate & highly desirable, a top piece in the auction
 55__ 101. Holly ruffled compote - blue
 20__ 102. Holly ruffled compote - marigold
 95__ 103. Scales 9" plate - peach opal - very rare & pretty in this shape
 35__ 104. Single Flower Framed crimped edge handgrip plate - peach opal
 275__ 105. Panelled Dandelion tankard water pitcher - green - an exceptional example, has blue irid., has an emerald look!(line in handle)
 825__ 106. Panelled Dandelion 5 pc. tankard water set - blue - also a super set, pretty
 400__ 107. Panelled Dandelion tankard water pitcher - marigold - a great one
 35__ 108. Panelled Dandelion tumbler - marigold
 35__ 109. Leaf Swirl compote - amber
 350__ 110. Fenton's Peacock at Urn 9" plate - blue - scarce plate & highly desirable
 450__ 111. Fenton's Peacock at Urn 9" plate - marigold - very desirable & nice
 30__ 112. Carolina Dogwood ruffled bowl - peach opal
 75__ 113. Carolina Dogwood ruffled bowl - marigold on milkglass, nice
 35__ 114. Ripple 10" vase - amber - has 2 3/4" base
 85__ 115. Holly ruffled bowl peach opal - extremely rare bowl, one of just a few known, has several chips on edge
 175__ 116. Holly ruffled bowl - marigold on moonstone - incredibly beautiful, has chip on edge
 75__ 117. Holly ruffled bowl - lime green - very pretty, has marigold overlay
 225__ 118. Vintage fernery - red - more on the brick side, extremely rare & highly desirable
 20__ 119. Vintage fernery - green

175_120. Enameled Crocus 7 pc. water set - ice green - very rare set, highly desirable
 X__121. Enameled Crocus water pitcher - white - very scarce
 95__122. Enameled (Lotus) 7 pc. water set - marigold
 45__123. Orange Tree Fruit bowl - marigold - pretty
 45__124. Pond Lily bon bon - green - scarce color
 175_125. Good Luck ruffled bowl w/ribbed back - marigold - super pretty pink irid.!
 35__126. Rosette ftd ruffled bowl - amethyst - silvery
 45__127. Leaf Rays ruffled nappy - purple
 25,10 128. Leaf Rays ruffled nappies (2) - peach opal - choice
 60__129. Dogwood Spray dome ftd ruffled bowl - peach opal
 275_130. Stippled Strawberry PCE bowl w/ribbed back - marigold - scarce & nice
 30__131. Miniature Morning Glory 7 1/2" vase - green
 50__132. Miniature Morning Glory 6" vase - smoke - pretty
 15,10x2 133. Miniature Morning Glory 6" vases (3) - marigold - choice
 35__134. Little Fishes ftd ruffled sauce - marigold
 135_135. Raspberry 6 pc. water set - green - has open bubble filled w/epoxy in pitcher
 200_136. Raspberry 5 pc. water set - marigold - very nice
 250_137. Dragon & Lotus ruffled bowl - peach opal - super pretty, very rare in this color, a nice bowl
 115_138. Dragon & Lotus ruffled bowl - amber - very nice & scarce
 75__139. Dragon & Lotus ruffled bowl - blue
 75__140. Lotus & Grape IC shaped bowl - green - very nice bowl & quite scarce in IC shape
 75__141. Lotus & Grape IC shaped bowl - blue - very pretty, also scarce
 75__142. Bo Peep mug - marigold - scarce item
 85__143. Raindrops 3 in 1 edge dome ftd bowl - peach opal
 50__144. Daisy & Plume ftd rosebowl w/rayed interior - green
 175_145. Soda Gold 7 pc. water set - smoke - scarce set in this color
 35__146. Soda Gold water pitcher - marigold
 5__147. Soda Gold tumblers (2) - marigold - choice
 105_148. Parlor Panels 3 1/2" squatty vase - smoke - couple of minor nicks on rim, unusual & pretty
 50__149. M'burg Peacock IC shaped sauce - amethyst - silvery
 650_150. Embroidered Mums 9" plate - ice green - extremely rare plate & highly desirable
 10__151. Blackberry Spray ruffled hat - marigold
 60__152. Petal & Fan large ruffled bowl - peach opal
 20,15 153. Petal & Fan ruffled sauces (2) - peach opal - choice
 X__154. Four Flowers ruffled sauce - peach opal(chip)
 135_155. Ten Mums ruffled bowl - amethyst
 70,45,40x2,35 156. N's Peacock at Urn IC sauces (6) - amethyst - choice
 25__157. N's Eight Sided bushel basket - green - large chip in handle
 175_158. N's Blackberry & Rays ruffled compote - marigold - very scarce compote & nice
 35__159. Morning Glory 6 1/2" vase - clear - has irid. on the top half of the vase, unusual
 375_160. M'burg Nesting Swan ruffled bowl - green - satin & very pretty, nice example

35__161. Fenton's Grape & Cable 7" ruffled bowl - green - very pretty, almost like an apple green
 115_162. Fine Cut & Roses candy dish - aqua opal - polished feet
 55__163. Fine Cut & Roses candy dish - white - normal feet
 20__164. Luster Flute breakfast set - green
 300_165. M'burg Tulip Scroll 11" vase - green - very pretty vase & rare
 20__166. Curved Star creamer - marigold
 85__167. Fruits & Flowers bon bon - marigold - pretty
 55__168. Three Fruits PCE bowl w/BW back - green
 40__169. Three Fruits PCE bowl w/plain back - purple - mold roughness on base
 675_170. Lattice & Grape tankard water pitcher - blue - very scarce pitcher & pretty, a nice one
 125_171. Lattice & Grape tankard water pitcher - marigold - dark & super
 10__171A. Lattice & Grape tumbler - marigold
 50__172. Grape Vine Lattice 6" plate - marigold
 50__173. Carolina Dogwood round bowl - peach opal
 15__174. Wreath of Roses rosebowl - marigold
 400_175. Butterfly & Plume water pitcher - amethyst - very pretty & scarce
 425_176. Butterfly & Plume 7 pc. water set - blue - a bit silver but very rare in this color
 575_177. Butterfly & Plume 7 pc. water set - green - nice set
 65__178. Fan gravy boat - peach opal
 50__179. Fan sugar bowl - peach opal
 185_180. Grape & Cable hatpin holder - green - very pretty, minor pinpoint on toe
 225_181. Grape & Cable hatpin holder - purple - very pretty
 225_182. Grape & Cable hatpin holder - marigold - as dark as I've seen them, minor nick on toe
 375_183. Spider hatpin - dark - extremely rare hatpin, highly desirable piece
 90__184. Hearts & Cross hatpin - dark - nice
 50__185. Top O' the Morning hatpin - dark
 65__186. Big Butterfly hatpin - dark
 55__187. Rooster hatpin - blue
 100_188. Persian Medallion 6" plate - blue
 80__189. Grape & Cable spt ftd 9" plate - purple - nice
 225_190. Tree Trunk mid-size 13" vase - amethyst - very nice & scarce
 15__191. Australian Paneled sugar - purple
 165_192. Octagon 7 pc. wine set - marigold
 65,60 193. Leaf Chain 9" plates (2) - green - both silvery, choice
 30__194. Grape & Cable hatshape - green
 145_195. Pansy ruffled bowl - purple - super pretty, a real beauty
 40__196. N's Peacock at Urn IC sauce - marigold - nice
 X__197. N's Peacock at Urn IC sauce - purple(nick on bead)
 65,30 198. Ski Star dome ftd crimped edge banana boat shaped bowl (2) - peach opal - choice
 35,15 199. Coin Spot ruffled compotes (2) - peach opal - choice
 900_200. Grape & Cable 8 pc. punch set - green - very rare set, highly desirable, pretty

- 35_201. Fenton's Grape & Cable round bowl - vaseline - has marigold overlay
 100_202. Imperial Grape water caraf - purple - very pretty
 85_203. Large rabbit bank - light marigold
 50_204. Mayflower gas shade - marigold
 245_205. Orange Tree loving cup - blue - very pretty
 195_206. Orange Tree loving cup - marigold - dark & pretty
 40_207. Peacock Tail tri-cornered sauce - amethyst
 75_208. M'burg Holly Sprig tri-cornered 6" bowl - amethyst - radium & super, minor nick on edge
 75_209. Heavy Iris tumbler - marigold - fabulous
 50_210. Luster Rose water pitcher - amber - very scarce pitcher, has minor nicks in roses
 25_211. Target 5 1/2" squatty vase - peach opal - minor nick on base
 5_212. Rustic 9" vase - blue - nick on one hob
 60_213. Rustic 7" vase - white - nice
 20_214. Holly & Berry tri-cornered nappy - peach opal
 370_215. N's Bushel Basket - horehound - very pretty & scarce
 50_216. N's Bushel Basket - purple
 75_217. N's Bushel Basket - blue
 75_218. N's Bushel Basket - marigold
 25_219. Blackberry Spray crimped edge ruffled hatshape - lime green - marigold overlay
 375_220. Peacock & Grape 9" plate - marigold - super pretty, a very nice plate, scarce
 35_221. Thin Panel tri-cornered crimped edge vase - peach opal
 85_222. Lotus & Grape ruffled bowl - blue
 95_223. Lotus & Grape ruffled bowl - green - scarce
 65_224. Lotus & Grape ruffled bowl - marigold - dark & pretty
 25_225. Daisy & Drape turned in vase - white - frosty & pretty(foot cracked)
 20_226. Dugan's Cherries ftd ruffled bowl - amethyst - silvery
 45_227. Folding Fan crimped edge banana boat shaped compote - peach opal
 35_228. Basketweave Open Edge ruffled basket - vaseline
 25_229. Floral & Optic ftd round bowl - marigold on milkglass
 325_230. Grape & Gothic Arches 4 pc. tableset - marigold - super pretty set
 10_231. Ripple 8 1/2" vase - marigold - 2 1/2" base
 275_232. Orange Tree hatpin holder - blue - very scarce, feet look good
 250_233. Orange Tree hatpin holder - marigold - feet look good
 95_234. Smooth Panels 5" vase - marigold on milkglass
 500_235. Singing Birds 7 pc. waterset - marigold - very nice set, highly desirable
 70ea_236. Smooth Panels 12" vases(2) - smoke - choice
 20_237. Bullseye & Beads 11" vase - marigold
 50_238. Ftd Thin Rib 6" JIP shaped vase - marigold
 50_239. Feathers 6" vase - marigold
 115_240. Apple Blossom Twigs ruffled bowl w/smooth edge & plain back - peach opal
 135_241. Apple Blossom Twigs ruffled bowl w/smooth edge and Big Basketweave back - peach opal - pretty
 60_242. Starfish ruffled compote - peach opal
 95_243. Dugan's Cherries 6" plate w/crimped edge - purple - scarce

H.O.A.C.G.A.

CLUB NEWS & GENERAL INFORMATION

The Newsletter is published on the 15th of each month. The Heart of America Carnival Glass Association is a Not-for-Profit organization registered in the State of Missouri.

Members are encouraged to contribute articles for publication in the newsletter and to advertise carnival glass for "sale" or glass "wanted". Articles may be educational in nature or about collecting experiences, or letters of interest to the membership. Other carnival glass organizations may announce their meetings and/or conventions. Auctioneers who are members may announce their future auctions. Members may announce their upcoming carnival glass educational books, price guides, and other pertinent publications; after the initial announcement the information will only appear in the bulletin "Resource Section". All items submitted for publication will be published in the next months bulletin or as soon as possible. The final decision to publish the articles will be made by the Board of Directors. Some articles may be edited prior to publication. Articles of an offensive nature or articles intended to discredit individuals will not be published.

Membership is \$25.00 U.S. & Canada, \$40.00 Foreign per family or individual. All monetary amounts quoted are in U.S. dollars. Membership year starts the month your dues were paid. All checks are to be made payable to H.O.A.C.G.A. and mailed to the Secretary, as listed on the inside front cover. All articles and items for publication in the bulletin are to be sent to the Bulletin Secretary whose name and address appear on the inside front cover.

MEMBERSHIP APPLICATION

©H.O.A.C.G.A.

New Member Renewal

\$25.00/year U.S. & Canada --- \$40.00/year Foreign

Make checks payable to HOACGA

NAME _____

ADDRESS _____

TELEPHONE _____ ZIP CODE (NINE DIGITS)

FAX _____

EMAIL ADDRESS _____

REFERRED BY _____

Send to: Ann McMorris, P.O. Box 4361, Topeka, KS 66604-0361

H.O.A.C.G.A. - CLUB INFORMATION

The purpose of the Heart of America Carnival Glass Association is to promote the growth and continuation of the Carnival Glass collecting hobby and to provide support to the many collectors by providing current information about the hobby.

Growth is accomplished by supplying educational information for the collector and soliciting new collectors into the hobby.

A Convention is held annually in April in conjunction with the annual meeting (Convention date always includes the 4th Friday). Some of the activities provided at the convention are:

- * Members provide Room Displays with glass from their collection.
- * Members are encouraged to bring glass for Sale.
- * Educational Seminars are provided by members.
- * A Major Carnival Glass Auction is provided.
- * The Convention offers members an opportunity to meet new collectors, renew old friendships and enjoy discussing carnival glass with other knowledgeable collectors.
- * A banquet is held with a Carnival Collector as our Speaker.
- * A Hospitality time is provided by the club. This is a time of relaxation and visiting with other members.

It takes the support of all collectors and members to promote the hobby in order that its growth and expansion can continue.

In order to obtain our objective, the members must financially support the organization. The Heart of America Carnival Glass Association receives its financial support through the Annual Membership dues and the sale of the following.

* **Membership Dues** - \$25.00 per year - U.S. & Canada. \$40.00 per year for Foreign. The Membership Year is from the date of joining to one year later. Dues are set by the Board of Directors to support the

publication of the monthly bulletin, typing, printing and mailing.

* **Educational Series - Book I** - 148 articles with pictures (black and white) on a variety of Carnival Glass Patterns.

* **Educational Series - Book II** - 180 articles with pictures (black and white) of Carnival Glass Tumblers

* **Educational Series - Book III** - 150 articles with pictures (black and white) of Bon Bons, Bowls, Drinking Vessels, Novelties, Rose Bowls, and Table Sets. Also included is a listing of 500 rarities.

* **Hartung Carnival Glass Pattern Books** - A set of 10 books identifying Carnival Glass Patterns. These books are a must for all Carnival Glass Collectors, especially for the beginner. These are the only complete set of books available that identifies the majority of the carnival glass patterns. Sketches are in black and white.

* **Pattern Notebook** - A notebook containing sections on Mugs, Table Sets, Rosebowls, Water sets (including painted sets), Plates (small, regular & chop), Compotes (large, regular & small), Punch Sets and Vases. Each section of the notebook identifies each pattern with a **COLOR** picture along with information about the Maker and colors of each different pattern.

* **Souvenirs** - Periodically H.O.A.C.G.A. makes a souvenir to be sold to members. Souvenirs have been made since 1974, a few of these are presently available. They are listed in the center section of the bulletin. Each year that Souvenirs are made, Whimseys are also made and sold at the convention banquet.

* **Video Tapes** - Video Tapes of educational programs given during the various conventions are available. A complete listing of the available video tapes are shown on the Order Form, which is part of this section of the Bulletin.

SHIPPING AND HANDLING (S&H) INFORMATION

The shipping charges to USA members are as indicated for each item. The shipping charges to members who reside outside the USA will be the actual cost. Upon receipt of item(s), the member will be expected to reimburse the club for the actual cost of shipping, as indicated by the postage on the package. At the time of placing your order, please indicate your shipping preference (air or surface). Unless otherwise specified, items will be shipped by surface mail.

ORDER FORM - SOUVENIRS & BOOKS

HOACGA Educational Series Book I \$15.00
 USA S&H for each book \$2.50
 Total \$17.50

HOACGA Educational Series Book II \$17.50
 USA S&H for each book \$2.50
 Total \$20.00

HOACGA Educational Series Book III
 (USA S&H included) \$20.00

H.O.A.C.G.A. SOUVENIRS:

1993 Ruby Red 6" "Good Luck" Plate \$37.50
 (20th Anniversary)
 1983 Marigold/Moonstone Loving Cup \$35.00

Include \$2.50 for USA S&H of each above souvenir.

PLATE HOLDERS - Dozen, Clear plastic 5" base, white wire 4" back
 holds plates and bowls \$21.50
 (USA S&H Included)

TOTAL \$ _____

Make checks payable to HOACGA

SEND ORDERS TO:

Ann McMorris
 P.O. Box 4361
 Topeka, KS 66604-0361

Name _____
 Address _____

ORDER FORM - VIDEO TAPES

H.O.A.C.G.A. CONVENTION SEMINAR VIDEO TAPES

"Red Carnival Glass" (Richard Cinclair, Bob Allaire & Joyce Seale) \$20.00
 "Shades of Blue" - (Richard Cinclair) \$20.00
 "Poppy & Rose Show Pieces" - (Tom Mordini) \$20.00
 "Fenton Two Flower" - (Bob Stremming) \$20.00
 "Carnival Glass Smalls" (Eleanor & Jack Hamilton) \$20.00
 "Small Plates" - (Smokey Cloud) \$20.00
 "Hatpin & Hatpin Holders" - (Clint Fox) \$20.00
 "Northwood Peacock & Urn Ice Cream Sets" (Harold Cox) \$20.00
 "Millersburg Big Fish & Trout & Fly" (Singleton Bailey) \$20.00
 "Carnival Glass Collecting Experiences" (Carl & Ferne Schroeder) \$20.00
 "Heinz 57 Variety Carnival Glass Collection" (Jerry & Carol Curtis) \$20.00
 "Little Sauces" - (Garth Irby) \$20.00
 "Miniatures" - (John & Lucile Britt) \$20.00
 "Table Sets" - (Leonard, Kremer & Grissom) \$20.00
 "Plates" - (Ruth Green & Richard Cinclair) \$20.00
 "'94 Britt Award Luncheon" (Floyd & Cecil Whitley) \$20.00
 "Plethora of Patterns" - (Dean & Diane Fry) \$20.00
 "Millersburg" - (Dick & Jennie Hostetler) \$20.00
 "Swung Vases" - (Dave & Joan Doty) \$20.00
 "Holly Pattern" - (John Mikkonen) \$20.00
 "'95 Britt Award Luncheon" - (Carl & Ferne Schroeder) \$20.00
 "'95 HOACGA Banquet" - (Floyd & Cecil Whitley) \$20.00
 "'96 Britt Award Luncheon" - (Chuck & Marge Kremer) \$20.00
 "'96 HOACGA Banquet" - (Carl & Eunice Booker) \$20.00
 "Imperial Glass" - (Norene Duran) \$20.00
 "The Molding Process" - (Howard Seufer of Fenton Glass Co.) \$20.00
 "Iridescence" - ('97, John Muehlbauer) \$20.00
 "Plates" - ('97, Judy Maxwell) \$20.00
 "'97 Britt Award Luncheon" - (Marie McGee) \$20.00
 "'98 Aqua Opal Display, Discussion by Jim Seec \$20.00
 "'98 Recollection of Collectors \$20.00
 "'98 Causes of Imperfections in Glass by Fenton/Seufer \$20.00
 "'98 Britt Award/Grissoms, Banquet/Cinclair, LONG PLAY \$35.00
 "'98 Aqua Opal, Recollection of Collectors, Causes of
 Imperfections in glass by Fenton/Seufer, LONG PLAY \$35.00
 "'99 Fenton Glass" (Don and Barb Chamberlain) \$20.00
 "'99 Recollections of Collectors" \$20.00
 "'99 Millersburg Display" \$20.00
 "'99 Britt Award Luncheon" (George & Mavis Loescher) \$20.00
 "'99 Banquet Green Millersburg" (Bill Richards, Sr) \$20.00

USA S&H included in price of tape

TOTAL \$ _____

SEND ORDERS TO:

Ann McMorris
 P.O. Box 4361
 Topeka, KS 66604-0361

Name _____
 Address _____

Make checks payable to HOACGA

ORDER FORM - BOOKS

HARTUNG CARNIVAL GLASS BOOKS

(Black and white sketches)

_____ Book 1 - \$6.00	_____ Book 6 - \$6.00
_____ Book 2 - \$6.00	_____ Book 7 - \$6.00
_____ Book 3 - \$6.00	_____ Book 8 - \$6.00
_____ Book 4 - \$6.00	_____ Book 9 - \$6.00
_____ Book 5 - \$6.00	_____ Book 10 - \$6.00

_____ Complete Set of 10 Books (#1 thru #10) - \$60.00

(Hartungs "Northwood Pattern Glass" included with a Set)

USA S&H - Include \$1.00 ea., for shipping when purchasing books separately.
Maximum of \$6.00 shipping for a set.

H.O.A.C.G.A. PATTERN NOTEBOOK

(COLOR Photos)

_____ Mugs	(1980)	\$7.00
_____ Table Sets (Photos 1 thru 40)	(1981)	\$7.00
_____ Water Sets 1 (Photos 1 thru 60)	(1982)	\$7.00
_____ Water Sets 2 (Photos 61 thru 120)	(1983)	\$7.00
_____ Water Sets 3 (Photos 121 thru 167)	(1984)	\$7.00
_____ Rosebowl 1 (Photos 1 thru 60)	(1985)	\$7.00
_____ Rosebowl 2 (Photos 61 thru 101)	(1986)	\$7.00
_____ Small Plates 1 (Photos 1 thru 48)	(1987)	\$7.00
_____ Small Plates 2 (Photos 49 thru 98)	(1988)	\$7.00
_____ Chop Plates (Photos 1 thru 40)	(1989)	\$7.00
_____ Regular Plates 1 (Photos 1 thru 48)	(1990)	\$7.00
_____ Regular Plates 2 (Photos 49 thru 81)	(1991)	\$7.00
_____ Compotes 1 (Photos 1 thru 57)	(1993)	\$8.00
_____ Compotes 2 (Photos 58 thru 113)	(1994)	\$8.00
_____ Punch Sets, 2nd Edition (Photos 1 thru 36)	(1995)	\$8.00
_____ Vases A - C (Photos 1 thru 57)	(1996)	\$9.00
_____ Vases D - G (Photos 58 thru 117)	(1997)	9.00
_____ Vases H - P (Photos 118-201)	(1998)	\$12.00
_____ Vases R - T (Photos 202-273)	(1999)	\$13.00
_____ Complete Pattern Notebook		\$163.00
_____ USA S&H for complete notebook		\$5.00
_____ USA S&H for each selection		\$1.00

(USA Maximum S&H \$5.00)

TOTAL \$ _____

Make checks payable to HOACGA

SEND ORDERS TO:

Ann McMorris
P.O. Box 4361
Topeka, KS 66604-0361

Name _____
Address _____

Merry Christmas

by Robert Grissom

Motif Series

Heart of America Carnival Glass Association

December 1999

This is the last Christmas of this century and we thought it would be nice to say greetings with some carnival glass pieces whose patterns go with the season. The two most popular decorations used at Christmas, the Holly and Poinsettia plants, were used as design motifs on some carnival glass patterns. One would think that the designers of these patterns were producing a design just for the Christmas season. If they were you would think there would have been more of the pieces produced in red and green. I guess at this point in time we can only guess as to why these Christmas patterns were used as a design.

Most of the carnival glass producing companies made a piece or pieces using either the Holly or Poinsettia design. Of the major companies, only Cambridge Glass Company did not make use of these motifs.

Christmas Compote. Wouldn't it be exciting to find a Christmas Compote under the tree at your home this Christmas? This is probably one of the most sought-after rarities in carnival glass. The piece was produced by the Dugan Glass Company and is found in amethyst/purple, as shown here, and marigold. The original mould was found in 1997, clearly marked with the Dugan/Diamond logo. Compotes in this pattern were reissued in ruby, topaz and green opalescent. These reissues were made by Fenton and marked with the Fenton logo.



Northwood's Panelled Holly. If we could not have a Christmas Compote under our tree this Christmas, perhaps a Panelled Holly pitcher would be a good second choice. Since only one of these pitchers is known in Carnival at this time, it is doubtful that many of us can expect to find one waiting Christmas morning. The other shapes known in Carnival in the pattern are the very rare spooner (below) and the relatively common bonbon or candy dish.



Fenton's Stag and Holly pattern is found in two sizes; the smaller with the spatula feet shown above and a larger mold with scroll feet. Both size molds were used to make bowls, plates and rosebowls. Green is common only in the ruffled bowls with the smaller fairly common; the larger rare. Red is found only in the small ruffled bowls. The giant rosebowl (above left) is blue; the ruffled bowl (above) is red with amberina feet.



Fenton's Holly. Fenton used the Holly pattern on bowls, plates, rosebowls, hats and stemmed compotes—and made them in many colors including the traditional Christmas green and red. Green is common in bowls and plates, rare in rosebowls, unknown in hats, and scarce in compotes. Red is found in ruffled bowls, a rare plate, no rosebowls, in most hat variations, and occasionally in compotes. The compote above is red opal and the jack-in-the-pulpit crimped hat is vaseline. The ruffled bowl at right is red.



Northwood's Poinsettia and Lattice (at right) and Imperial's Poinsettia milk pitcher. Found only in ruffled bowls, Northwood's Poinsettia and Lattice is an extremely collectible pattern. Northwood made many patterns in green—but not this one. The Poinsettia milk pitcher is green and was also made in marigold, purple, and smoke.





Millersburg Holly and Dugan Holly and Berry. Whether it is called Holly Sprig or Holly Whirl, the Millersburg Glass Company utilized the Holly design on several different shapes including the card tray-shaped bonbon above as well as bowls of varying sizes and a single-handled nappy. Dugan's Holly and Berry (left) is usually seen in a single-handled nappy that is ruffled or tricorner—as well as the occasional 7" to 8" bowl.



Holly and Poinsettia and Fenton's Water Lily. The small Holly and Poinsettia compote (above) was possibly made by Dugan. Although called Water Lily by most collectors, the alternate name for the Fenton pattern at the right is Poinsettia and Lotus as those are the floral designs represented here. The pattern is found in footed large and small bowls, although the smaller bowl is occasionally found with a collar base.



Glass courtesy of Burns Auction Service, Bob DiPasquale, Todd and Susan Kuwitsky, George and Mavis Loescher, Mickey Reichel Auction Co., Seck Auctions. Photographs © David Doty • Design and production by David Doty

SPECIAL SALE - 25% OFF

HOACGA PATTERN NOTEBOOK AND VIDEOS

The Notebook contains 19 sections with colored photos and description of each pattern. Each section is on different items in Carnival Glass. Presently, The Notebook contains a section on MUGS, TABLE SETS, three sections on WATER SETS, two sections on ROSE BOWLS, two sections on SMALL PLATES, CHOP PLATES, two sections on REGULAR PLATES, two sections on COMPOTES, PUNCH SETS, and four sections on VASES. Each year a new section is added to this information.

HOACGA has copies of many different Videos that have been made from the various member educational talks and events that have occurred during the conventions. The subject matter of these videos are listed on the previous pages in this bulletin.

As a special Christmas time offering, the complete notebook is \$122.00. The Videos are \$15.00 each, except the two 1998 LONG PLAY Videos are \$26.00.

During this same time the individual Notebook Sections are offered for \$1.00 off.

Make checks payable to HOACGA

SEND ORDERS TO:

Ann McMorris
P.O. Box 4361
Topeka, KS 66604-0361

Name _____
Address _____

NEW LOCATION, HOACGA MONTHLY MEETINGS

We will no longer meet at Park Lane Medical Center in Raytown, MO. We will meet at the Prairie Village Community Center at 7700 Mission Road, Prairie Village, KS

Sunday, November 28, 1999

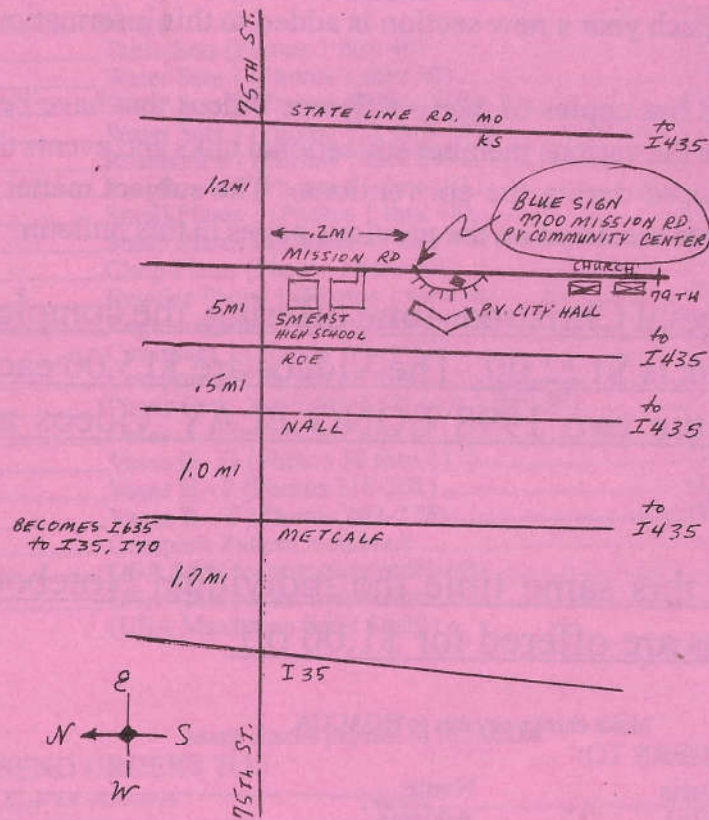
NO DECEMBER MEETING

Sunday, January 23, 2000

Sunday, February 27, 2000

Sunday, March 26, 2000

APRIL CONVENTION AT EMBASSY SUITES



HOACGA Monthly Meeting

The monthly meeting of HOACGA was held on November 28, 1999 at the Prairie Village Community Center. The new meeting place is spacious, has good lighting, plenty of close parking, kitchen and restroom facilities, tables and chairs. There were 12 members present but this room could easily accommodate 50 persons.

President Grissom reported that Doug Peters had made his last payment and the records collected on this case would be stored in the storage area.

On the 2000 Convention souvenir, on November 22 Fenton Glass did a 1 hour and 15 minute run which produced 75 pieces at a cost of \$1,000. These pieces are in various colors and shapes. Fenton will be sending a few pieces to Bob for inspection. Bob reported that 18 spittoons leftover from the 1999 convention are being made into whimsies by Fenton.

The convention program has been finalized and menus selected for the lunch and banquet.

Discussed (1) the software program being produced by Joan Doty to record data from the Britt files and other areas; (2) the 2000 roster to be printed and mailed in January, 2000.

Treasurer Cliff Ball reported on income and expenses for the past month. Approved for audit.

The Christmas Party will be held on December 9, starting at 6:00 p.m. at the Prairie Village Community Center. Club will provide meat, bread and drinks. Members are invited to bring salads and desserts. You all come!

Bob reported HOACGA would be hosting a Hospitality room on January 8, 2000 at the Day's Inn in Boonville, MO, in conjunction with Mickey Reichel's auction.

The program was on advertising and painted pieces. The display included bottles, table sets, pitchers and tumblers, plates and bowls provided by several members.

The door prize was won by Ann McMorris.

Ann McMorris
Secretary, HOACGA

HEART OF AMERICA CARNIVAL GLASS ASSOCIATION

BOARD MINUTES

October 28, 1999

The Board met on October 28, 1999 at 3:00 p.m. in the Holiday Inn, Lawrence, KS. Present were President Bob Grissom, Vice President Gene Cox, Treasurer Cliff Ball, Bulletin Secretary Tom Limback and Secretary Ann McMorris.

HOACGA BULLETIN

Contents of the November bulletin were discussed. The HOACGA Logo is now on the front cover. Consensus for November and December, the video tapes (with exception of Long Play tapes) and the Pattern Notebook will be offered at 25% discount. This will be headlined on the front cover with "Xmas sale on Notebook and video tapes". Articles and items for inclusion in the November issue are (1) an article on the Air Capital Convention and on the special tumbler sale by Bob Grissom; (2) An item asking for members to submit stories on their past finds and for pictures of rare and unusual pieces from members' collections; (3) An article from the Kansas City Star regarding the new KC mail distribution center to advise members of the mailing situation; (4) Final notice regarding roster information.

ROSTER PUBLICATION

Lambert Moon Printers will be contacted to produce the 2000 Roster. Larry and Bob will consult with the printers on style, type, and contents for the roster early in December. 1250 copies will be produced. January 2000 is the scheduled mailing time.

PETERS CASE

Treasurer Cliff Ball reported the balance due of \$450 from Doug Peters. When Doug Peters completes payment, it was determined that the information obtained regarding Peters' activities in this case will be sealed in a box and stored with notation for destruction in 2002. President Grissom's letter to the membership regarding the Peters case should be made a part of the minutes of the 1999 convention.

2000 CONVENTION

Bob is working with the Embassy Suites on menus and other arrangements. A tasting session of the lunch and dinner menus by the board will be scheduled in November. (NOVEMBER 15 at 2:30 p.m. at the Embassy Suites is scheduled.)

2000 SOUVENIR

Frank Fenton will send a proposal on cost to prepare samples of the 8" plate with Pansy pattern - colors being considered are ice blue, aquamarine - with slight taper in plate. Pieces produced in the sampling could be sold as whimsys to recover the cost. (The following week Bob reported Fenton Glass cost would be \$1000 to produce samples - he conferred by phone with the board and received approval to authorize the sampling.)

5TH VASES SECTION

Bob reported progress continues on the 5th section of Vases to be ready for the 2000 convention.

MAILING LIST

After consideration by the board to moving the production of the mailing labels with barcoding to the Secretary, it was decided to continue the current setup with Larry Hawkins.

CLUB PROMOTION

The current procedure is to drop from the newsletter mailing list those members who are two months delinquent on their dues. Suggested a reminder letter be sent each month to those members reaching that 2 month period. Board members to receive a list of those dues delinquent each month.

COLORED INSERT

Dave Doty is currently preparing two colored inserts - Christmas Patterns and Berries (Butterfly & Berries not included.) 1500 copies of each insert will be produced. Printer will staple the insert into the newsletter and the overage will be used for promotion of the club. The Christmas Patterns insert will be sent in December.

CHRISTMAS PARTY

At the monthly October meeting, Ed Kramer announced reservation of the Prairie Village Community Center on December 9 for the Christmas Party. The Board authorized the purchase of the meat and bread and will ask Ed to arrange this. Each member to bring a covered dish. Gift exchange in the range of \$20 will be held. There will be a door prize offered. Bob Grissom to mail invitations on the Xmas party.

EXPIRED MEMBERSHIPS

Secretary McMorris reported on the results of the mailing to members whose dues had expired during the last five years.

PROPOSAL

Cliff Ball proposed the establishment of a Board of Continuing Editors consisting of eight persons with each person to contribute six articles a year. Cliff agreed to prepare a letter to be sent to a select list of persons to initiate this board. The list can be expanded as the project progresses.

BRITT AWARD AT 2000 CONVENTION

In the February issue of newsletter announce the name of the recipient of the Britt Award at the 2000 Convention.

HOACGA PINS

Member Bruce Edwards had emailed Bob suggesting HOACGA consider preparing a HOACGA Member identification pin. Ann McMorris will check into this and report her findings to the board.

NEXT MEETING

No date set for November board meeting.

The next monthly meeting will be November 28 at the new location - Prairie Village Community Center, 7700 Mission Road, Prairie Village.

Adjournment.

Ann McMorris, Secretary

WELCOME NEW MEMBERS

We welcome the following new members:

Bob & Sharon Brown Elk River, MN
Gary Rohman Solebury, PA

We thank those members referring new members to HOACGA.

Bob Criscom
Chuck Kremer

Ann McMorris, Secretary HOACGA

DECEMBER CHRISTMAS PARTY

The HOACGA Christmas party is scheduled for December 9 (Thursday) at the Prairie Village Community Center from 6:00 p.m. to 10:00 p.m. The club will provide the meat, bread and drinks and members are asked to bring salads and desserts. See page 30 for directions. Other than the Christmas party, there will be no December meeting.

Submitted by Secretary Ann McMorris.

Anniversaries

CONGRATULATIONS!!! to those members who are celebrating their 40th or more wedding anniversary. The anniversary date and the number of years is indicated.

Harold & Arlene Cox
3401 Walden Run
Fort Wayne, IN 46815-6167
Married 53 years on December 24th

Wilfred & Judy Schutz
8231 Henry Street
Lincoln, NE 68506-1810
Married 43 years on December 27th

Mr. & Mrs. Alton Skouby
3107 Garnett Dr., Apt A-8
Bridgeton, MO 63044-3134
Married 55 years on December 24th

Fern & Larry Robords
635 Seattle Drive
Lexington, KY 40503-2124
Married 51 years on November 24th
(omitted from November's bulletin)

Bernice & Raymond Haas
5854 Chestnut Hill Church Road
Emmaus, PA 18049-5401
Married 59 years on December 25th

A card or note recognizing this event would surely be appreciated. Each monthly bulletin will contain the names of those members who are currently celebrating their 40th or more wedding anniversary.

H.O.A.C.G.A. BULLETIN
ADVERTISEMENT POLICY

- All advertisements of glass for SALE or WANTS must be received by the Bulletin Secretary no later than the 28TH DAY OF THE MONTH to insure being published in the next bulletin.
- Members may advertise ten (10) "For Sale" and/or "Wants" per month. The "For Sale" Glass must be members glass and not the property of a nonmember. Advertising is at no cost.
- Only "OLD CARNIVAL GLASS" items or H.O.A.C.G.A. Souvenirs will be published.
- Damage or flaws should be noted.
- All "For Sale" items must be priced; **NO BID ITEMS WILL BE PUBLISHED.**
- A 5 day return privilege, at buyer's expense, providing it is not as advertised, or as discussed.
- Postage and Insurance is to be the responsibility of the buyer, both when returning and receiving the glass.
- The sender of the glass (be it the seller or the buyer returning it) is responsible for the proper packaging of the glass.
- When submitting FOR SALE and WANTED ads, please write legibly so that your ad can be read; spell out words as opposed to using abbreviations. Your ad will be formatted to fit as best as possible. Items will be limited to one line, unless you are advertising less than ten items.
****IMPORTANT**** - be sure to include your name, address & phone number **on the ad itself.**
- H.O.A.C.G.A. does not accept responsibility for accuracy of any advertisement.

Use the Following Abbreviations for Glass Description
If the color you have is not listed here, please spell out color

A	Amethyst	EG	Emerald Green	P	Purple
AMB	Amber	G	Green	PRL	Pearl
AO	Aqua Opal	H	Horehound	PM	Pastel Marigold
AQ	Aqua	HA	Honey Amber	PO	Peach Opal
B	Blue	IB	Ice Blue	R	Red
BLK	Black	IG	Ice Green	RA	Amberina
BO	Blue Opal	IGO	Ice Green Opal	RB	Renninger Blue
CLM	Clambroth	LAV	Lavender	SM	Smoke
CelB	Celeste Blue	M	Marigold	Saph	Sapphire
CobB	Cobalt Blue	MMG	Marigold on Milk Glass	T	Teal
EB	Electric Blue			VAS	Vaseline

Notes: • To indicate colors not listed here, please spell out completely.
• To describe a piece as light or dark, use the body of the ad.
Iridescence: EI - Excellent, GI - Good, AI - Average, LI - Iridescence

CARNIVAL GLASS FOR SALE

Dick Wetherbee, 11 Baker Pond Rd. Ext., Charlton, MA 01507
Phone: (508) 248-0038

M	EI	April Showers 10" vase, Peacock Tails inside, pretty.....	32.00
G	EI	Butterfly/Berry tumbler, great color & rare color, pin head	65.00
T	EI	Corinth 8" vase, hard color to find	42.00
M	EI	Beauty Bud 12½" vase, large size 2" diameter opening	65.00
Saph	EI	Four Pillars 12½" vase, chipped toes, outstanding color	45.00
A	EI	Corinth 10" vase, nice shape & color	24.00
M	EI	Ripple 6" bud vase, super dark color, cute	35.00
G	EI	Parlor Panels 11½" vase, teal green, real pretty	125.00
G	EI	Morning Glory 6" vase, a base flake but rare color so	25.00
M	LI	Hearts & Flowers 9" fluted bowl, missing one point	75.00

Douglas Snow, 2412 Ashford Blvd., Flushing, MI 48433
Phone: (810) 732-8197

M	Grape & Cable compote	60.00
M	Garland rose bowl	70.00
M	Florentine candlesticks, pair	90.00
M	Wreath of Roses rose bowl	50.00
G	Acanthus multi-colored ruffled bowl, a beauty	100.00
G	Thistle 8½" ruffled bowl	125.00
LAV	Coin Dot rose bowl Westmoreland	90.00
M	Stag & Holly spatula footed ruffled bowl	120.00
G	Ripple 12½" vase	135.00
B	Peacock & Grape 9" ruffled bowl	120.00

Richard A. Commini, 5 Milford Lane, Milford, DE 19963-9585
Phone: (302) 335-3511

P	Vintage bowl CRE	42.00
M	Question Mark compote, George Bell eyt	42.00
M	Millersburg Cherry's creamer	42.00
M	Studd cream/milk pitcher	28.00
P	Wide Rib vase (N) 7" tall	42.00
G	Thin Rib vase (N) Alaska 10" tall	42.00
M	Millersburg Big Fish bowl, chipped	75.00
G	Millersburg Grape Wreath 8" bowl, spider web center	65.00
Ciam	Millersburg Blackberry wreath 3/1 edge bowl	65.00
A	Peacock and Grape 3/1 edge bowl	125.00

CARNIVAL GLASS FOR SALE

Dave Ackerman, 4677 Kennebec Drive, Cass City, MI 48726
Phone: (517) 872-2023

B	Poppy Show plate	1,500.00
R	(Cherry) Holly 5½" bowl	800.00
PowB	Wine & Roses cider glass	60.00
G	Strawberry plate N.	225.00
Cob	Wine & Roses cider glass	100.00
G	Fenton Grape & Cable footed plate	185.00
P	Three Fruits N plate, good color	200.00
LG	Holly 9" bowl, a beauty	600.00
M	Golden Harvest decanter with stopper	125.00
P	8½" Embroidered Mums bowl	325.00

Gerald M. Hess, 220 N. First St., Argos, IN 46501-1010
Phone: (219) 892-6193

R	EI	Good Luck shot glass, souvenir of 1976 HOACGA conv. ...	30.00
RA	EI	Good Luck tumbler, souvenir of 1975 HOACGA conv	25.00
M	EI	Crab Claw tumbler	35.00
B	EI	Panelled Dandelion tumbler	50.00
M	EI	Diamond & Daisy cut tumbler	70.00
G	EI	(N) Singing Birds tumbler	60.00
B	EI	Daisy & Little Flowers enameled tumbler	40.00
B	EI	Footed Orange Tree variant tumbler (no cable or scales) ..	300.00
A	EI	Captive Rose 6" 3/1 edge compote	70.00
A	EI	Mlrsbrg Peacock/Urn 5½" sauce, no bee/beading on Urn .	150.00

Bill Smith, P.O. Box 61, Hallswood, VA 23359
Phone: (757) 824-5320 after 7 PM, (757) 824-2099 days

Violet	EI	7¼" Thin Rib N Squatty vase, rare color	85.00
M	EI	Concord marigold ruffled bowl, super	225.00
G	EI	Fruits & Flowers bon bon nice example	135.00
EP	EI	Imperial Grape wine glass, super	45.00
EP	EI	Electric Grape Delight nut bowl, incredible	200.00
P	EI	(2) Pulled loops vase, both great	ea. 85.00
P	EI	Imperial Grape compote, super example	150.00
M	EI	Peacock at Urn Fenton plate, super	475.00
M	EI	(N) Poppy pickle dish, super	90.00
M	EI	Dark marigold Orange Tree IC shape, super	90.00

CARNIVAL GLASS FOR SALE

Mike & Debbie Heint, 240 Mize Rd. N., Cullman, AL 35055
Phone: (256) 739-0281, Call after 6 PM CST, Email: mheint@hiwaay.net
Postage & Insurance extra

AQ	Fenton 10½" foot two flowers ruffled bowl, rare color	450.00
M	Northwood Three Fruits plate, stippled with rib back	500.00
R	Fenton Acorn 7" bowl, rare color	700.00
P	Northwood Town Pump, small flake on marie	910.00
A	Millersburg Holly Sprig ruffled compote, very rare	1,295.00
A	Cambridge Double Star water set pitcher 4 tumb, scarce	1,400.00
M	Fenton Kittens 6 ruffled bowl, scarce	225.00
R	Fenton JIP two row openedge basket, color rare	400.00
P	NW Finecut and Roses rose bowl, no collar base, damaged	75.00
CLM	Fenton Orange Tree plate, trunk center	325.00

Ted L. Sheibley, 53 Meadow Brook Court, New Cumberland, PA 17070
Phone: (717) 770-0616, Layaways available

AQ	EI	Blackberry Spray ruffled hat	85.00
P	EI	Cobblestones 9" ruffled bowl	350.00
AMB	EI	Rooster hatpin	75.00
A	EI	Stag & Holly ruffled bowl, spatula footed	175.00
AO	EI	Dandelion mug	550.00
B	EI	Apple Blossom Twigs 9" plate	275.00
B	EI	Butterfly & Berry small berries, have 6	ea. 40.00
B	EI	Grape & Gothic Arches 7 pc. water set	695.00
M	EI	Trout & Fly 9" ruffled bowl	395.00
B	EI	Singing Birds stippled mug	675.00

Donald L. Harris, 527 Lavina Drive, Mechanicsburg, PA 17055
Phone: (717) 790-0412 Send .55 stamp for large list of for sale glass

B	EI	Peacock at Fountain compote	875.00
P	EI	Imperial Grape punch cup	45.00
G	EI	Wreath of Roses punch cups (3)	ea. 22.00
M	EI	Hearts & Flowers compote, rib back	175.00
B	EI	Peacock at Urn small ice creams (5)	ea. 100.00
P	EI	Thin Rib mid-size funeral vase	295.00
G	EI	Imperial Grape 6" plate, multi-irid	95.00
M	EI	Grape Arbor 7 piece water set	350.00
W	EI	Peacocks on Fence 9" plate, plain back	475.00
B	EI	Bouquet water pitcher	295.00

CARNIVAL GLASS FOR SALE

Marlin L. Blosser, 4705B Charles Rd., Mechanicsburg, PA 17055
Phone: (717) 975-2920

A	EI	Butterflies bon bon	45.00
B	EI	French Knots hat	45.00
B	EI	Peacock at Fountain fruit bowl	875.00
M	EI	Acanthus 10" plate	125.00
M	EI	Butterfly & Berry creamer	75.00
M	EI	Fentonia sugar with lid	85.00
M	EI	Hobstar cracker jar with lid	85.00
M	EI	Horseheads Medallion plate	300.00
M	EI	Open Rose small salad bowl	15.00
M	EI	Royalty punch cups (4)	ea. 25.00

John & Jeanette Rogers, 2543 Rocky Ford Rd., Kittrell, NC 27544
Phone: (252) 492-1472

B		God & Home tumbler	195.00
G		Singing Birds tumbler	85.00
G		Butterfly & Fern tumbler	110.00
M		Imperial Grape cup & saucer	65.00
BO		Daisy & Wreath bowl	325.00
M		Hobnail Swirl rose bowl	295.00
M		Two Flowers footed bowl 10"	65.00
M		Rising Sun pedestal pitcher	350.00
PO		Dugan's Holly nappy	45.00
M		Acorn Burrs water set, 7 pc. dark marigold	1,500.00

William & Charlotte Wesley, 10240 Fairway Dr., Ellicott City, MD 21042
Phone: (410) 461-3713

CLM	EI	Holly plate	175.00
M	EI	Strawberry plate, pastel	250.00
A	EI	Lotus & Grape bon bon, MC	100.00
M	EI	Double Scroll 3 pc. matching set	135.00
M	EI	Drapery vase, good feet	100.00
M	EI	Blackberry 2 sides up, open edge	45.00
P	EI	Ripple vase 11½" E.B. hilights	150.00
P	EI	Leaf & Beads rose bowl, flower int, super	225.00
T	EI	Cornith vase 7"	50.00
AO	EI	Leaf & Beads heavy opal rose bowl	350.00

CARNIVAL GLASS FOR SALE

Richard Cinclair, 4404 Briar Hollow, Plano, TX 75093
Phone: (972) 596-0014, Email: RJC4470@DCCCD.EDU

G	EI	Greek Key ruffled bowl, super pretty	195.00
M	EI	Hearts & Flowers plate, the best	1,950.00
M	EI	Seacoast Pin Tray, buffed but pretty	525.00
W	EI	Fruits & Flowers bon bon	395.00
B	EI	Embroidered Mums bowl, electric in the middle	525.00
M	EI	Good Luck plate, dark, ribbed back	1,800.00
W	EI	Rose Show plate	725.00
M	EI	Grape & Cable covered compote, inside lip chip, fractures	725.00
M	EI	Grape & Cable master punch set (12 cups)	2,475.00
W	EI	Peacocks ruffled bowl, lots of bubbles so	695.00

Bill & Sharon Mizell, 52 Old Bonifant Rd., Silver Spring, MD 20905-5903
Phone: (301) 384-8952

M	EI	Derby (Pinwheel) 6½" vase	300.00
G	LI	Tem Mums large CRE bowl	175.00
M	EI	Three Fruits plate, BW back	100.00
BA	EI	Open Edge 2 sides up basket	175.00
SM	EI	Estate perfume	225.00
M	EI	474 compote	95.00
M	EI	Heart Band small creamer	50.00
G	EI	Fenton Flowers rose bowl	245.00
M	EI	Daisy Columns (5 daisies mid-size) tumbler	25.00
VAS	EI	Concave Diamonds tumbler	150.00

Alan & Lorraine Pickup, 531 Holiday Ave., Hazelwood, MO 63042-1802
Phone: (314) 895-3430

B		Feather Stitch 7½" deep round bowl, nice	95.00
M		Ribbons & Leaves English open sugar bowl, scarce	30.00
M		Strawberry bon bon, with strawberry center	55.00
A		Daisy & Plume footed rose bowl	60.00
A		Smooth Rays bon bon, Northwood	40.00
M		Bullseye & Beads vase, 8" tall x 6" flair, radium	45.00
BA		Orange Tree small mug	100.00
M		Grape Delight rose bowl, smooth crimped edge	65.00
M		Sail Boat wine	20.00
G		Small Rib (Fenton) compote, see #76 in rose bowl section	20.00

CARNIVAL GLASS FOR SALE

Steve & Pat Beranek, 305 Pleasant St., Lost Nation, IA 52254-0126
Phone: (319) 678-2425

P	Pansy ruffled bowl.....	135.00
M	Pineapple rose bowl.....	105.00
M	Pansy ruffled bowls (2).....	ea. 30.00
M	Pineapple rose bowl.....	105.00
M	Hobstar Flower compote.....	75.00
M	large Scroll Embossed compote.....	50.00
M	Open Rose plate.....	100.00
CLM	Frosted Block 9" plate.....	30.00
M	Imperial Grape 6" flat plate.....	50.00
AMB	Heavy Grape chop plate.....	175.00

Dick Hatscher Sr., 142 Walnut Hill Rd., Bethel, CT 06801
Phone: (203) 743-1468

M	EI	Flute (N) 5 pc. salt set.....	158.00
P/A	EI	Grape & Cable 3 footed Orange bowl.....	188.00
P/A	EI	6" Mlbg. multi star var. Blackberry Wreath sauce (2) ..	ea 48.00
P/A	EI	9" Ruffled Pansy bowl.....	79.00
P/A	EI	9" Peacocks bowl PCE & BWE.....	328.00
G	EI	9" Ruffled Greek Key bowl collar base.....	138.00
PO	EI	Star Fish compote 8 ruffles.....	68.00
PO	EI	Rare Dragon & Lotus bowl.....	550.00
BO	GI	9" Ruffled Carolina Dogwood bowl.....	175.00
*	EI	Amberina 3 footed 6" sauce Water Lily.....	565.00

Greg Warhol, 20 Goffle Rd., Midland Park, NJ 07432
Phone: (201) 689-7785, Fax: (201) 689-7566

B	EI	Hearts & Flowers compote.....	400.00
P	EI	Three Fruits Medallion 9" ruffled bowl.....	110.00
AMB	EI	Dragon & Lotus 9" ICS bowl.....	140.00
P	EI	Pansy 9" ruffled bowl.....	100.00
A	EI	Ripple 11" vase, multicolored, radium.....	110.00
B	EI	Persian Medallion small compote, multicolored, pretty.....	95.00
B	EI	Stork in the Rushes mug, rare.....	600.00
M	FI	HP Morning Glory 8 3/4" vase, radium.....	65.00
A	EI	Dugan Cherries 8 1/2" footed bowl.....	110.00
P	EI	Imperial Grape water carafe.....	185.00

CARNIVAL GLASS FOR SALE

Omer E. Sweeney, 28 Esmond St., Esmond, RI 02917
Phone: (401) 231-4108, Insurance and postage extra

P	Grape & Cable water pitcher & 6 tumblers.....	625.00
P	Grape & Cable punch bowl & base, small.....	625.00
P	Grape & Cable hat pin holder, small chips on feet.....	125.00
P	Town Pump, spout broken off, pretty shelf piece.....	100.00
G	Town Pump, spout broken but clean break.....	(firm) 200.00

Lee & Phyllis Bryant, 11645 NW Winchester Rd., Decatur, IN 46733
Phone: (219) 639-3415, best after 4 PM

A	G&C hatpin holder, multi nice.....	250.00
M	Open Rose flat plate, nice.....	90.00
M	Mikado compote 10" round nice.....	180.00
M	Constellation ruffled compote dark mari.....	100.00
PO	Beaded Panels compote tri corner.....	75.00

Have complete years of HOACGA Bulletins from 1983 through 1995.

Free to anyone wanting for reference, you pay the handling and shipping charges.

Joyce Seale, 105 Own Tree Trail, Greenville, TX 75402
Phone: (903) 450-0361

P	EI	Imperial Grape plate, electric, fantastic.....	2,900.00
M	EI	Peacocks & Grape plate.....	625.00
PowBEI		Ribbon Tie bowl.....	175.00
M	EI	Orange Tree loving cup.....	350.00

Dick Wetherbee, 11 Baker Pond Rd. Ext., Charlton, MA 01507
Phone: (508) 248-0038 (OMITTED FROM NOVEMBER BULLETIN)

M	EI	Windmill 5 3/4" ashtray with a cigar holder, different.....	38.00
B	GI	Knotted Beads 9 1/2" vase, great detail.....	60.00
G	GI	Peacock Tails 8 1/2" bowl, 3/1 edge, rare shape.....	165.00
M	EI	Daisy & Plume 6" stemmed rose bowl, very pretty.....	40.00
P	EI	Diamond Point (N) 11" vase, goldy-purplish color.....	65.00
PO	EI	Pearly Dots 5" compote, a real pretty one.....	125.00
M	EI	Thin Rib 10" vase, great color.....	28.00
G	EI	Blackberry Wreath 1 1/2" ruffled Williamsburg bowl.....	110.00
A	EI	Vintage 6 1/2" comp., outstanding clr, Mfgs no-harm scale.....	85.00
M	EI	Peacock Tails 6" tri-shaped sauce, real cute.....	50.00

CARNIVAL GLASS FOR SALE

Roy & Kathie Bledsoe, P.O. Box 948, Arkadelphia, AR 71923-0948
Phone: (870) 246-9625

M	Fenton Butterfly & Fern 7 pc. water set	700.00
P	Northwood Grape & Cable 7 pc. water set	450.00
M	Northwood Grape & Cable large compote	495.00
P	Northwood Grape & Cable sweetmeat & lid	200.00
G	Millersburg Nesting Swan 9" bowl, radium, minor edge nicks	300.00
P	Fenton Star of David w/Bows dome base bowl	100.00
M	Fenton Ten Mums 9½" bowl	140.00

CARNIVAL GLASS WANTED

Jerry & Cleo Kudlac, 1425 Apache, NE, Piedmont, OK 73078
Phone: (405) 373-4455 or Email: jckok@ionet.net

A	Windflower plate
CobB	Windflower ICS bowl and nappy
PO	Windflower nappy
Any	Unusual shapes or colors in the Windflower pattern

Phillip Royal Hinds, 5990 Sugarloaf Rd., Collinsville, IL 62234
Phone: (618) 344-6768

M	Checkerboard tumbler
P	Circle Scroll
P	Cone & Tie
IB	Dandelion
IB & IG	Dandelion variant
G	Frolicking Bears
M & G	Gay Nineties
B	Hanging Cherries
G	Harvest Flower
W	Heavy Iris

Brad Chapman, 139 Buck St., Gorham, ME 04038-2209
Phone: (207) 839-2359 (Days only)

P/A EI Imperial Grape punch set

Ed Kramer, 4305 W. 78 St., Prairie Village, KS 66208
Phone: (913) 642-3587

P,B	Grape & Cable nappy (from punch cup)
M EI	13" 474 vase
M EI	Curved Star domed butter dish, pattern outside
M EI	Curved Star compote, vases
M EI	Unusual candlestick pairs, Firefly, Moonprint, Thumbprint
M EI	Triple Alliance Biscuit jar lid, see Thistlewood P. 159
M EI	Silver/glass epergne lilies marigold petals, clear base w/ 2 line spiral. (4")

Greg Warhol, 20 Goffle Rd., Midland Park, NJ 07432
Phone: (201) 689-7785 Fax: (201) 689-7566

Violet Grape & Cable jar lid, stippled

CARNIVAL GLASS WANTED

Clinton Arsenault, PO Box 1845, Monrovia, CA 91017
Phone: (626) 303-1953 (I return all calls)

M Toilet Bowl float
M Humpty-Dumpty bank
M Ind Brasileire Rio Rua - Buenos Ayers w/picture ashtray
M Insulators
CD 235 Pyrex 662 Corning Pyrex (C in Corning backwards)
CD 327 (the variation)
CD 281 Hemingray - 71 Made in U.S.A.
CD 251 (Any in Carnival)
CD 214 Hemingray 43
CD 137 Hemingray/Lowex D-990

George S. Bond, 720 Gran Paseo Drive, Orlando, FL 32825-7923
Phone: (407) 382-6201

M Many Fruits punch bowl (only) ruffled with outstanding irid
B Ground Cherries enameled pitcher with outstanding irid

Ted L. Sheibley, 53 Meadow Brook Court, New Cumberland, PA 17070
Phone: (717) 770-0616

M Wreathed Cherry butter bottom
B Orange Tree punch bowl
AO Tree Trunk vase
P Grape & Cable perfume bottle
IB Grape & Cable hatpin holder
M Grape & Cable punch bowl, plain or stippled
P Vintage powder jar lid
P Memphis fruit bowl
P Peacock at the Fountain punch bowl
W Acorn Burr punch bowl, damage OK

Donna Boykin, 600 FM 1737, Greenville, TX 75402-9006
Phone: (903) 454-2347, Email: donnab@unicomp.net

G Butterfly & Fern tumblers, must be in excellent condition
and have good color/iridescence.

CARNIVAL GLASS WANTED

Donald L. Harris, 527 Lavina Drive, Mechanicsburg, PA 17055
Phone: (717) 790-0412 Will sell parts I have

A/M/P Grape & Cable powder jar lid
B Fentonia butter dish lid
B Orange Tree butter bottom
B Orange Tree powder jar lid
G Hanging Cherries powder jar bottom
G Vintage epergne base, large size
IG/W Wishbone epergne lily
M Grape & Cable butter bottom
M Grape & Cable sugar bottom
M Inverted Strawberry powder jar lid

Marlin L. Blosser, 4705B Charles Rd., Mechanicsburg, PA 17055
Phone: (717) 975-2920

Any Peter Rabbit plate
B Daisy & Drape vase
B Drapery vase/rose bowl
G Shell & Jewel lid
M Heavy Grape punch base
B/G Mikado compote
M 474 punch bowl top
AO Good Luck bowl
Any Grape & Cable master punch bowl
Any Little Stars bowl, round or 3 in 1

Gary Donaldson Isbelaleuca, Cresnet Rothwell 6022, Queensland, Australia
Phone: one 011617, 32047871

G One or more Grape & Cable fruit bowl
with Persian Medallion interior

Roy & Kathie Bledsoe, P.O. Box 948, Arkadelphia, AR 71923-0948
Phone: (870) 246-9625

AMB Imperial Pansy nappy
G Imperial Pansy relish dish
M Imperial Pansy low ruffled bowl
B Fenton Chrysanthemum Collar base 8 ruffle bowl
B Northwood Strawberry bowl, ruffled or pie crust edge

CARNIVAL GLASS WANTED

William & Charlotte Wesley, 10240 Fairway Dr., Ellicott City, MD 21042
Phone: (410) 461-3713

- G EI Millersburg butter dish bottom
- M EI Small Lily or base Wide Panel epergne

Richard Cinclair, 4404 Briar Hollow, Plano, TX 75093
Phone: (972) 596-0014, Email: RJC4470@DCCCD.EDU

- W Peacock at the Fountain punch tup
- M Intaglio Dianna the Huntress
- Any Unusual hatpins

George Bond, 720 Gran Paseo, Orlando, FL 32825-7923
Phone: (407) 382-6201

- M Many Fruits punch bowl, ruffled only with excellent iridescence
- DM Orange Tree butter bottom only, dark marigold
- B Ground Cherries water pitcher, enameled with excellent iridescence

Barry Pate, 30 Sunset Summit, Asheville, NC 28804-3730
Phone: (828) 254-4915 anytime

- M Bo Peep bowl, no damage
- M Golden Wedding bottle any size, all labels and cap if possible
- 1969 Imperial Eage & Star mugs, Presznick
- M Advertising salt shaker described in Marion Hartung's Sixth book p. 118
- DM EI Robin mug, no damage

Sam McGill, 27 Wells Rd., Broad Brook, CT 06016-9516
Phone: (860) 623-4645

- B Base for Wreath of Roses punch bowl
- P Base for Peacock at the Fountain punch bowl
- G Base for Wide Panel epergne
- W Top for Dahlia butter dish
- P Diagonal band pitcher with iris decoration

- 30_244. Open Rose rosebowl - amber - scarce color
- 385_245. Swan salt - peach opal - lots of opal & very pretty, scarce
- 230_246. Swan salt - purple - pretty, very scarce
- 155_247. Swan salt - marigold - pretty
- 20_248. Swan salt - celest blue
- 20_249. Swan salt - ice green
- 1_250. Swan salt - pink(epoxy around top edge)
- 160(red),25x2,15 251. IG Swan salts (4) - pink, white, red, & blue - choice
- 230_252. Diamond Lace 5 pc. water set - purple - always desirable
- 10_253. Imperial Grape ruffled bowl - marigold - has wire handle
- 40_254. Blackberry Block tumbler - blue
- 150_255. Fanciful ruffled bowl - white - pretty
- 45_256. Pinched Swirl 6 1/2" vase - peach opal
- 135_257. Fruits & Flowers handgrip 7" plate - green - scarce
- 75_258. Fruits & Flowers 7" plate - purple - silvery
- 20_259. Question Mark crimped edge compote - peach opal - pretty, chips on base
- 135_260. Orange Tree 8 pc. punch set - marigold - nice set
- 25_261. Orange Tree standard size mug - amber - scarce color
- 10_262. Orange Tree standard size mug - marigold
- 105_263. Ten Mums 3 in 1 edge fld bowl - marigold - pretty, a little out of shape
- 45_264. Lotus & Grape bon bon - purple
- 200_265. Persian Garden large IC shaped bowl - white - very pretty
- 125_266. Butterfly & Berry tumbler - green - scarce color
- 25_267. Butterfly & Berry tumbler - blue
- 40_268. Wine & Roses water pitcher & goblet - marigold - pitcher damaged, goblet perfect, sold together
- 30_269. Golden Harvest wine decanter w/stopper - marigold
- 135_270. Concord ruffled bowl - blue - highly desirable & nice
- 65_271. Pansy pickle dish - amber
- 145_272. Pansy dresser tray - amber - scarce item.
- 75_273. Petal & Fan 6" crimped edge plate - peach opal - super
- 80_274. Fisherman's mug - purple
- 80_275. Three Fruits 9" plate w/plain back - purple - chip on base
- 75_276. Three Fruits 9" plate w/BW back - marigold
- 70_277. Beaded Panel crimped edge tri-cornered compote - peach opal
- 10_278. Double Loop chalice - blue
- 55_279. Heavy Grape 8" plate - marigold - pretty
- 145_280. Fenton's Peacock at Urn ruffled bowl - blue - very nice
- 35_281. Fenton's Peacock at Urn ruffled bowl - marigold - lacks-irid.
- 65_282. Panelled Dandelion tumbler - blue
- 25_283. Panelled Dandelion tumbler - marigold
- 20_284. Singing Birds tumbler - amethyst
- 450_285. Dugan's Peacock at the Fountain 7 pc. water set - blue - scarce & desirable
- 10_286. Flowering Dill crimped edge JIP hatshape - marigold

80_287. Vintage small size epergne - green - nick on lily
 125_288. Peacock at the Fountain butterdish - marigold - pretty
 145_289. Peacock at the Fountain spooner - marigold
 255_290. Brass hanging light fixture w/4 winter scene hanging shades
 35_291. Beads & Flowers 6" plate - peach opal
 10_292. Holly ruffled hatshape - blue
 30_293. Holly ruffled hatshape - vaseline
 50_294. Miniature Blackberry compote - blue - buffing on base
 65_295. Four Flowers 6" plate - peach opal
 95_296. Four Flowers 6" plate - purple - silvery
 105_297. Honeycomb rosebowl - peach opal - scarce & desirable
 55_298. Waterlily ftd ruffled sauce - amber - scarce color
 65_299. Two Flowers ftd ruffled sauce - lime green - no marigold overlay, pretty
 155_300. Enameled Iris 4 pc. tankard water set - marigold - very pretty set & scarce
 35_301. M'burg Hobnail rosebowl - marigold - hit inside rosebowl
 70_302. Stippled Three Fruits ruffled bowl w/ribbed back - marigold - scarce
 60_303. Windmill milk pitcher - purple - super pretty but cracked, rare
 70_304. Ski Star dome ftd tri-cornered crimped edge bowl - peach opal - nice
 675_305. N's Town Pump - purple - a carnival classic, scarce
 2_306. Twins fruit bowl base - marigold
 35_307. Pulled Loop 10" vase - peach opal
 75_308. Four Pillars 10" vase - aqua opal - pretty, minor nick on one foot
 10_309. Diamond Points 10" vase - purple
 105_310. Concord 9" plate - amethyst - super pretty, cracked in half & glued together
 40_311. Orange Tree powder jar - blue - minor nicks on lid
 225,235_312. Little Barrels (2) - smoke - both pretty, choice
 60_313. Little Barrel - marigold
 35_314. Imperial Grape water pitcher - green
 10_315. Imperial Grape tumbler - green
 20_316. Imperial Grape water pitcher - marigold
 5_317. Imperial Grape tumbler - marigold
 30_318. Thin Panel 6" crimped edge JIP shaped vase - peach opal
 165,115_319. Strawberry 9" plates (2) - purple - choice
 475_320. Flowers & Spades 10" ruffled bowl - peach opal - scarce & pretty
 65_321. Flute toothpick - purple
 60_322. Flute toothpick - marigold
 225_323. Hobstar & Waffle Block giant basket - marigold - very scarce basket, nice
 60_324. M'burg Blackberry Wreath 7" ruffled bowl - amethyst - radium
 115_325. Grape & Cable sweatmeat - purple - scarce
 85_326. Dragon & Lotus IC shaped bowl - amber - scarce color
 115_327. Daisy Block rowboat - amethyst - scarce color
 20_328. Rococco vase - marigold(chip off foot)
 65_329. M'burg Isaac Benesch & Sons Holly Sprig bon bon - marigold - satin & scarce
 675_330. Oriental Poppy tankard water pitcher - purple - very pretty example & highly desirable, a nice pitcher!
 65_331. Grape & Cable powder jar - marigold

65_332. Grape & Cable cologne bottle - marigold
 105_333. Round Up ruffled bowl - peach opal
 155_334. Kittens plate - marigold - scarce
 135_335. Vintage 9" ruffled bowl - amber - very pretty & scarce in this color
 20_336. Wishbone & Spades ruffled sauce - peach opal
 75_337. Floral & Grape water pitcher - marigold
 10ea_338. Floral & Grape tumblers (2) - marigold - choice
 40_339. Sov. of M'burg Glass Co. founded 1909 toothpick - vaseline - not sure of age
 145_340. Enameled Fressia 5 pc. water set - marigold - scarce
 10_341. Ripple 7 1/2" vase - marigold - 2 1/2" base
 55_342. M'burg Primrose ruffled bowl - marigold - radium & nice
 35_343. Oriental Poppy tumbler - green
 125_344. Ribbon Tie 3 in 1 edge bowl - blue - nice
 75_345. Morning Glory 12" funeral vase - marigold - has 9" wide mouth
 115_346. Bouquet water pitcher - marigold
 35_347. Bouquet tumbler - marigold
 55,25_348. DeVilbus perfumes (2) - marigold - choice
 20_349. Poinsettia milk pitcher - marigold
 295_350. Grape & Cable 7 pc water set - purple - very pretty set
 305_351. Grape & Cable 7 pc. water set - marigold - also very nice set
 10_352. Lattice & Daisy 8" vase - marigold
 20_353. Unusual Foreign water pitcher - marigold - pretty, repair on top
 35_354. Tree of Life 5 pc. ftd water set - marigold
 160_355. M'burg Little Stars 7" ruffled bowl - amethyst - satin
 15_356. Dugan's Cherries ftd ruffled bowl - peach opal
 85_357. Raindrops dome ftd tightly crimped turned up bowl - peach opal - whimsical shape
 10_358. Wide Panel round bowl - marigold on milkglass
 50_359. Holly & Berry ruffled bowl - peach opal
 120_360. Four Flowers variant ruffled bowl - purple
 30_361. Fenton's Three Fruits 12 sided plate - marigold
 60_362. Diamond Lace ruffled sauce in metal holder - purple
 35_363. Single Flower tri-cornered crimped edge bowl - peach opal
 25_364. Blackberry Open Edge ruffled basket - powder blue
 800_365. Stippled Three Fruits 9" plate w/ribbed back - sapphire - super pretty, extremely rare & highly desirable, one of the top pieces in the auction
 ___366 to 372 choice lots.

**Coming Soon:
7th Edition "Standard Encyclopedia of Carnival Glass"**

By Mike Carwile & Bill Edwards

Many hours have been spent on this 7th edition, (which my editor tells me will be available sometime in late December or January and will be the largest book ever published by "Collector Books".) With nearly 500 pages, this edition should prove to be one of the most enjoyable and informative books on carnival glass to date.

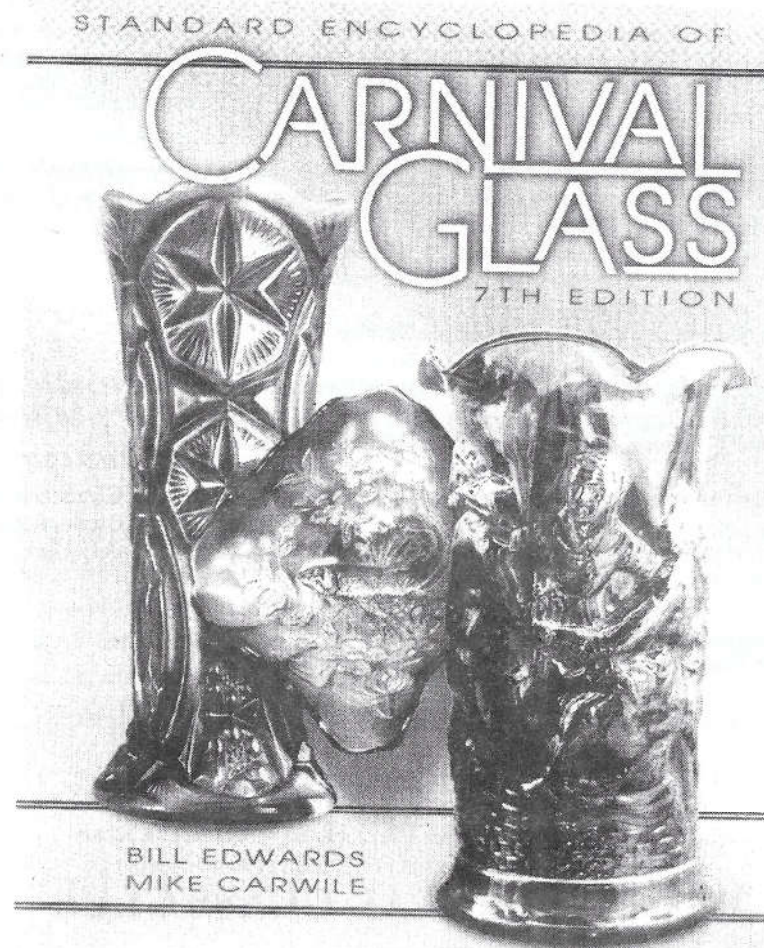
For starters, the front cover will show 3 super pieces of carnival glass. Aqua Opal Slag "Ohio Star" vase, a rare "Big Fish" square bowl (yes, the fish is facing to the left) and the highly prized "People Vase" in Amethyst. The back cover will also show some rare and exciting pieces. As you move through the pages you will find information on almost every aspect of carnival glass that should help everyone from the beginner right up to the seasoned collector. Hundreds of new replacement and never before shown pieces of glass appear in this latest edition. Also new to our format will be an entire section devoted to "Whimsies". Many pieces of unknown origin have now been traced to certain companies, new shapes of old patterns have been found and many other surprises are contained in this new edition.

Of special interest to most will be the "Price Guide" changes. First, the black and white photos have been removed and replaced with 3 new color columns, I.B., I.G., and white. Prices for some pieces and patterns have been either raised or lowered in an attempt to conform to current values. However, keep in mind that this is only one of many prices guides. The knowledge of "Grading" carnival glass is the key to any price guide.

I hope you will enjoy this book as much as I've enjoyed working on it and if you have any questions, comments or suggestions concerning this 7th edition, please contact me at:

Mike Carwile
180 Cheyenne Drive
Lynchburg, VA 24502
Phone: (804) 237-4247

(see facing page for book cover)



UPCOMING EVENTS

The Tampa Bay Carnival Glass Club

Lose Your Heart to Carnival Glass (Our Motto)

Will be holding its annual Convention on **February 10, 11, and 12, 2000.**
Early registration will be on **February 9th, 2000.**

Location: The Hampton Inn, Clearwater central. 21030 US Highway 19 North, Clearwater, FL 33765. Phone: (727) 797-8173. Be sure to mention that you are with the T.B.C.G. Club to receive our special rate of \$75.00 per night for Feb. 9th, 10th, 11th, and 12th *only*.

Thursday: Open house at the home of Jackie and Randy Poucher. 9:00 - 12:00 AM. 7:00 PM Hospitality Room, Dessert social. Yearly business meeting, Installation of officers, Show and tell by **Tom Burns**.

Friday Morning: 10:00 AM. Program on Imperial Glass by **Tom Bagot**.
2:00 PM. Auction preview
4:00 PM. Auction by **Tom Burns** Auction Service.

Saturday: 9:00 AM to 3:00 PM Show and sale of Carnival Glass open to the public. 6:00 PM to 7:00 PM Happy Hour in the lobby. The **banquet** will be held at 7:00 PM featuring a program by **Noreen Andretta** on Fostoria Brocaded Glass patterns.

Remember the Sparkling Clearwater Depression Glass Show also in Clearwater Feb. 12th and 13th. Come and enjoy a lovely vacation week-end in Sunny Clearwater. For more information, please contact **Naomi Calkins** 120 Woodland Ct. Safety Harbor, FL 34695. Phone: (727) 725-4145.

\$2.50 Registration fee for members
\$5.00 for non members

CONVENTION 2000*** - Come in Out of the Cold!!!

February 17, 18, 19 and 20th, 2000

First time in Dallas: Crown Plaza Hotel, 7800 Alpha Road
(At Coit Road and the LBJ 635 Expressway North)

TEXAS CARNIVAL GLASS CLUB

Offers you a Real "Howdy Ya'll" Texas Welcome and Southern Hospitality
Beautiful remodeled Crown Plaza and delightful Atrium
(no matter the weather outside) Convenient to Dallas - Love Field Airport

For more information.

see details in *THE RANGER*, the TCFC Newsletter,
or contact Matzi Thrasher: (281) 351-2202

UPCOMING EVENTS

OLD CARNIVAL GLASS SHOW & SALE

ST. JAMES CATHOLIC CHURCH

FELLOWSHIP HALL

505 WOODCREST AVENUE

LITITZ, PA.

MARCH 11, 2000 - 9 A.M. UNTIL 3 P.M.

A wide assortment of Carnival Glass made from about 1907 until the early 1920's, including many rare pieces, will be displayed by some 28 dealers from nine states. We are currently accepting names on our waiting list for the Show & Sale.

Please note the Show & Sale will be in the Fellowship Hall at St. James Catholic Church. There will be a nice selection of food and beverages for everyone to enjoy.

This Carnival Glass Show offers an excellent opportunity for anyone to bring their glass to be identified and appraised.

There will be a \$3.00 admission charge.

For more information and directions, please contact:

Nancy C. Williams
2009 Cullman Drive Reading, PA 19601
Phone: (610) 374-9033

Millennium Edition

MORDINI'S CARNIVAL GLASS AUCTION PRICE REPORT FOR AUCTIONS CONDUCTED IN 1999. 15th edition

1999 Carnival Glass Auction Price Report (15th edition) will be ready to mail January, 2000. Over 5,300 listings of Carnival Glass sold at major auctions in the United States during 1999. **ORDER NOW**

PRICES ARE AS FOLLOWS:

1999 REPORT	\$10.00
1999 REPORT, (2 OR MORE EACH), to same address	\$ 9.00
BACK ISSUES (1990-98) EACH	\$ 9.00

Canadian orders should be by Canadian Postal money order in U.S. funds
Overseas mailings add (per report) \$ 3.00 (Int'l Money Order in U.S. funds)
ORDER FORM

Tom & Sharon Mordini, 36 N. Mernitz Av., Freeport, IL 61032
Phone 815-235-4407 FAX 815-232-3911 E-mail tommordini@aol.com

CALENDAR OF EVENTS

Mickey Reichel Carnival Glass Auction

9th Annual Extravaganza

January 8, 2000

Contact: Mickey Reichel, Office: (660) 882-5292
Home: (660) 882-5283, Email: mreichel@undata.com

Sunshine State Carnival Glass Convention 2000

February 3, 4, 5, 6, 2000

Contact: Jackie Poucher, 9087 Baywood Park Dr.,
Seminole, FL 33777 Phone: (727) 398-1866, Email: jpoucher1@aol.com

Tampa Bay Carnival Glass Club Convention 2000

February 10, 11, 12, 2000

Contact: Naomi Calkins, 120 Woodland Ct., Safety Harbor, FL 34695
Phone: (727) 725-4145

Texas Carnival Glass Club- Convention 2000

February 17, 18, 19 & 20, 2000

contact Matzi Thrasher-281-351-2202

Heart of America Carnival Glass Convention 2000

April 27, 28, 29, 30, 2000

Contact: Ann McMorris, Post Office Box 4361, Topeka, KS 66604-0361
Phone: (785) 478-9004, Email: mcmorris@woodsland.com

Keystone Carnival Glass Convention 2000

May 25, 26, 27, 2000

Contact: Donnie Royle, Phone: (610) 777-8126