

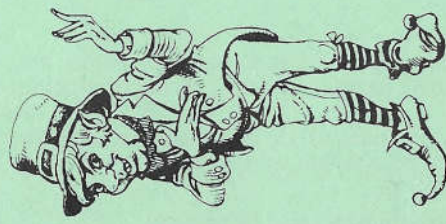
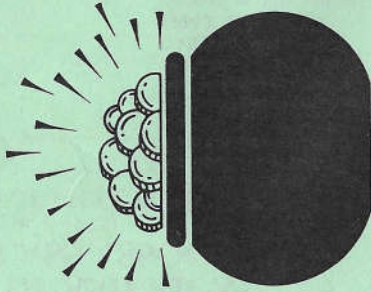
HOACGA

Heart of America Carnival Glass Assoc. Inc.

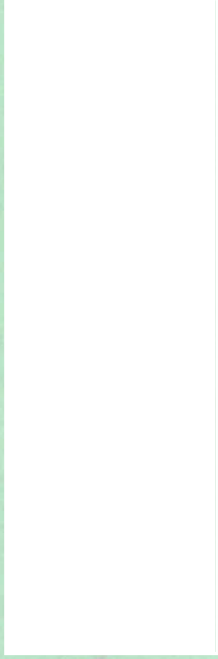
March 1997

RETURN ADDRESS

H.O.A.C.G.A.
Jackie Fortney
P.O. Box 303
Buckner, MO 64016



FIRST CLASS MAIL
U.S. POSTAGE
PAID
Buckner, MO
Permit 03



**HEART OF AMERICA
CARNIVAL GLASS ASSOCIATION**
(Since 1973)
BOARD OF DIRECTORS

PRESIDENT ROBERT GRISSOM
7517 Evanston
Raytown, Missouri 64138
PHONE: 1-816-356-5320

VICE-PRESIDENT DARYL STROHM
8904 E. 29th Street
Kansas City, Missouri 64129
PHONE: 1-816-252-8053

TREASURER CLIFF BALL
572 W. Park Street
Olathe, Kansas 66061
PHONE: 1-913-782-0415

SECRETARY ED KRAMER
4305 W. 78th Street
Prairie Village, Kansas 66208
PHONE: 1-913-642-3587

BULLETIN SECRETARY JACKIE FORTNEY
Post Office Box 303
Buckner, Missouri 64016
PHONE: 1-816-650-5208

Please send information about your Club to the Bulletin Secretary. We will include the name of your club, the secretary's name, address & phone number, dues, and the meeting place(s) and time(s) in the Bulletin.

Anniversaries

CONGRATULATIONS!!! to those members who are celebrating their 40th or more wedding anniversary. The anniversary date and the number of years is indicated.

Brian & Doreen Laphorne
Sligachan Butchers Lane, Preston Hitchin,
Herts England SG47TR
Married 40 years March 16th

Jerry & Bertie Metzger
Rt# 1 Box 85, Braggs, OK 74423
Married 42 years March 26th

Ray & Betty Smith
1015 W. Fair Play St, Bolivar, MO 65613
Married 45 years March 28th

J.P. & Mary Wells
4220 Cole St., Forth Worth, TX 76115
Married 44 years March 14th

Vern & Susie White
405 1st St., Grafton, IA 50440
Married 51 years March 21st

Joe & Shirley Williams
606 N. Orchard, Prairie City, IA 50228
Married 46 years march 16th

A card or note recognizing this event would surely be appreciated. Each monthly bulletin will contain the names of those members who are currently celebrating their 40th or more wedding anniversary.

If you have not notified the Bulletin Secretary, Jackie Fortney, of your anniversary, please send the information. Your anniversary will be recognized in the appropriate monthly bulletin.

NEW HOACGA EDUCATIONAL BOOK III

The HOACGA Educational Series Book III is now available. This Educational Series contains articles which were previously printed in the monthly bulletin. The book contains articles written on several different subjects; i.e. Bon Bons, Bowls, Drinking Vessels, Novelties, Rose Bowls, Table Sets, by several different members. Members who contributed articles are Britt, Fry, Kremer, Pickup, Brooks, Roque, Kuhn, Curtis & Briix.

The book contains educational information on about 150 different patterns and it also contains a list of approximately 500 rarities (only 5 or less known). This type of information is not found in any other carnival reference material.

It is a very informative book.

You may order it from: Ed Kramer, Secretary, 4305 W. 78th Street, Prairie Village, KS 66208. Make checks payable to HOACGA

ORDER FORM

HOACGA Educational Series Book III

Number of copies _____ @ \$20.00 ea. = \$ _____

(USA S&H included)

Name _____

Address _____

EDUCATIONAL TUMBLER SERIES

By John & Lucile Britt



BEADED SPEARS VARIENTS

The above photo illustrates two different variants of the Beaded Spears tumblers. In the next photo, we show the regular Beaded Spears tumblers for you to see the difference between the Beaded Spears and the Varients. Notice that in the varients that the six circles are in a distinct band that circles around the tumbler while on the regular Beaded Spears tumblers these six circles are somewhat larger and one circle is placed directly in the six spears that point downwards. No band of circles is used near the top on the regular Beaded Spears tumblers.

In size the Beaded Spears variant shown on the left in the photo above is the same size as the larger lemonade Beaded Spears tumbler illustrated in the photo on page 7. The smaller variant on the right is what we call the collar based Beaded Spears Variant. The collar base extends out from the tumbler and contains a lattice type design that we have never seen on the regular Beaded Spears tumblers. The color of both these varients is very unusual. The smaller collar based variant is in a beautiful light blue color. The lemonade size variant appears to be more of



an aqua teal color at the top, but the base color leans to a green shade. Whatever color that you might choose to call them, they certainly are very pretty and most unusual.

The four tumblers shown in this article belong to Bob Smith of Boston, MA. He picked them up in India on his recent trip to that country. While on his tour, he also visited Czechoslovakia, Finland, England, and Australia. None of this type of tumblers were even seen in Czechoslovakia.

Bob Smith, after quite a number of years thinking that this group of rather light weight glass tumbler such as Beaded Spears, Australian Daisy, Banded Moon and Stars, Whirls Away, Grapevine and Spikes and Beaded Mirrors were made in India has convinced me that they were made in that country.

A few of this type of tumblers have been found signed with the letters JAIN molded into the bottom surface of the tumbler. This should indicate that the vases such as the Hand and Fish vases that are signed with the JAIN name were also made in India instead of Czechoslovakia.

We have a photo copy of a letter sent to Bob Smith from the Director of the Jain Glass Works (P) Ltd. Firozabad, (India) in which he states that they did indeed make these glass tumblers. The Jain Glass Works called them Lustre glasses and they were made in the 1935 era. More of these patterns that were made in India will be covered from time to time in the Educational Tumbler Series.

This article on the Beaded Spears Variant tumblers is #230 in our Educational Tumbler Series. Next month we will feature the Buzz Saw and File juice glass.

BEWITCHED, BOTHERED AND BEWILDERED

A look at Imperial's 'near cut' geometrics

By Glen and Stephen Thistlewood

"Bewitched, Bothered and Bewildered"... so wrote Lorenz Hart, for the Mickey Rooney and Judy Garland musical "Babes in Arms". Well, bewitched, bothered and bewildered is how we felt during our intensive study of 'near cut' geometric patterns in Carnival for a recent issue of our *NetworK* * journal. Hobstars, file and diamonds began to merge into one another. However, bewildered as we were, we were also enthralled as a fascinating discovery began to develop into an intriguing detective story. These answers would not have emerged but for the recently issued copy of the Imperial catalog of 1909. **

The saga really began when our friends David and Coral Rose (keen Carnival collectors from England) whilst on vacation in Pennsylvania, spied a delightful emerald green bowl tucked away in an antique mall. Small pieces travel easily in carry-on baggage... and so this exquisite little bowl came to the UK with the Roses. They were unsure of the pattern and asked if we could help identify it. Eventually, we found it illustrated (in crystal glass) in the 1909 Imperial catalog, where the items shown are large and small berry bowls, a plate and a nut bowl - they all have the same Imperial pattern number 3437. Rose Presznick showed the piece in her "Carnival and Iridescent Glass Book IV" and called it "*Imperial's 3437 - Blaze*". The same pattern is also identified as *BLAZE* in Bill Edward's 5th Edition Carnival Glass Encyclopedia (he suggests the maker to be English, but it is Imperial). However, Marion Hartung shows the identical pattern in her Fourth Book of Carnival Glass - but confusingly, she calls it *CRABCLAW*!

Our article in *NetworK* caused collectors to check their geometrics, and within two days we had been called to check out two large berry bowls. Sure enough, one turned out to be a smoke master berry, (see photograph, top of next page) the other a marigold master berry - both are *BLAZE*, although their owners had previously supposed them to be *CRABCLAW* after identifying them from Hartung's Book 4. Our conclusion must be - based on the Imperial catalog pattern numbers and their different geometric patterns - that most (if not all) the bowls that are currently thought to be the *CRABCLAW* pattern are in fact *BLAZE*.

There is of course a *CRABCLAW* pattern, which is different from *BLAZE*. There is a *CRABCLAW* water pitcher and a matching tumbler (see photograph on page 10) - they are illustrated in the 1909 Imperial catalog and have the pattern number 409. These are probably the only two shapes in the *CRABCLAW* pattern!



But isn't there also the rare *CRABCLAW CRUET*? This piece turns up from time to time in the United Kingdom; it is a tall, tapering shape usually found in a good dark marigold that becomes clear at the bottom. We've owned one and have seen several others (are they perhaps not quite as rare as was once thought?). Previously we had assumed the *CRABCLAW CRUET* pattern to be another shape in that pattern range. However, to our amazement, we spotted the "cruet" in the 1909 Imperial catalog - it had the pattern number 302 and it was described as a "Small decanter" with matching wine glass. We checked more pieces that were shown with the pattern number 302, and discovered one in a shape we recognized. It's a compote in the pattern known to Carnival collectors as *HOBSTAR FLOWERS*! So, going back to the Cruet or Decanter shape - yes, the pattern elements match perfectly. The *CRABCLAW CRUET* is in fact a *HOBSTAR FLOWER* decanter.

(Interestingly, our *HOBSTAR FLOWER* decanter was married with an *OCTAGON* stopper - and so was every other one we've seen, which seems to be too many for sheer coincidence!)

So, our conclusion is that there are three distinctly different Imperial geometric patterns, which are illustrated for greater clarity:

***CRABCLAW* (Imperial #409)** - occurs in a pitcher and a tumbler.

***BLAZE* (Imperial #3437)** - found in large and small bowls.

Note that it has a very distinctive marie pattern that helps to identify it. There may be other Carnival items that have not yet been identified as *BLAZE*.

***HOBSTAR FLOWER* (Imperial #302)** - found in a scarce decanter shape and a compote. There could well be other shapes such as a small wine and a goblet.

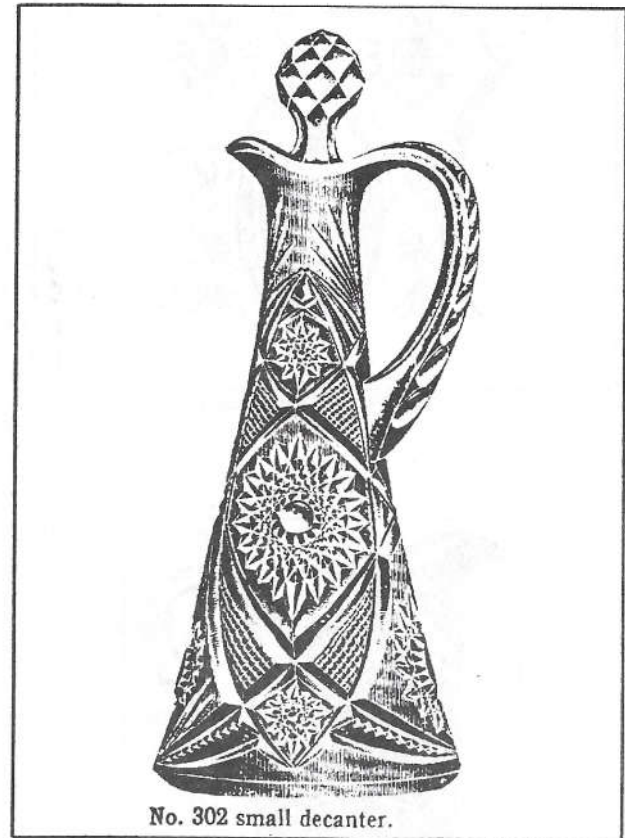


All these patterns have hobstars and a curving file pattern - which is probably why they have been incorrectly linked before. This mis-identification highlights some of the problems caused by the difficulty in recognizing geometric patterns. The pattern elements frequently change slightly, or in their relationship to one another, to accommodate the different shapes and sizes of Carnival items on which they appear. If you're in the geometric mood, check out some more of Imperial's geometric patterns and you will see that they also have hobstars and a file pattern! *CHATELAINE, OCTAGON, FASHION...* and so on.

* *NetworK* journals #12 and #13 covered Geometric patterns. *NetworK* is available in the USA from PageWorks, PO Box 14493, Chicago, IL 60614 at \$20 for four quarterly issues (\$5 each). Checks payable to PageWorks please.

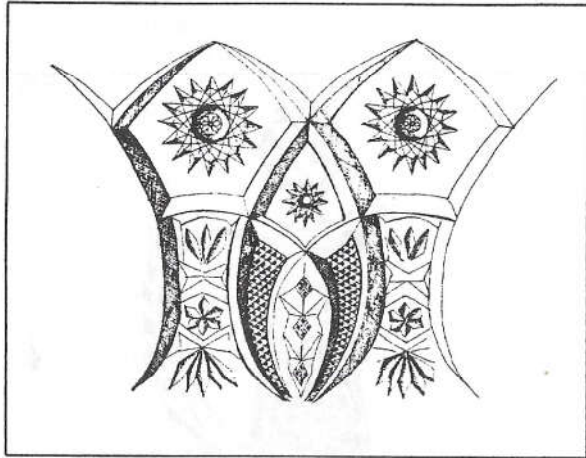
NetworK is available elsewhere from G & S Thistlewood, PO Box 83, Alton, Hants, GU34 4YN, England. Price is £11.20 for four quarterly issues, within the United Kingdom. Outside the UK, cost is £15. Cheques or Money Orders (Sterling funds) payable to G. Thistlewood please.

** 1909 Imperial Catalog: Thanks to George Allen who found the Catalog pinned page by page, all over the wall of a New Orleans antique shop and passed it to John and Lucile Britt. The Britts, with their generous nature and sharing way, have now issued it for all collectors to learn from.

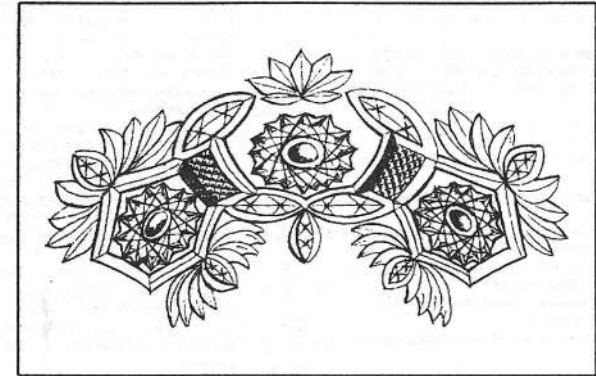


No. 302 small decanter.

HOBSTAR FLOWER decanter (#302) as illustrated in the Imperial catalog 1909. This is the item that is currently called the "Crabclaw Cruet".



Detail of CRABCLAW pattern (Imperial's #409)
as seen on a tumbler



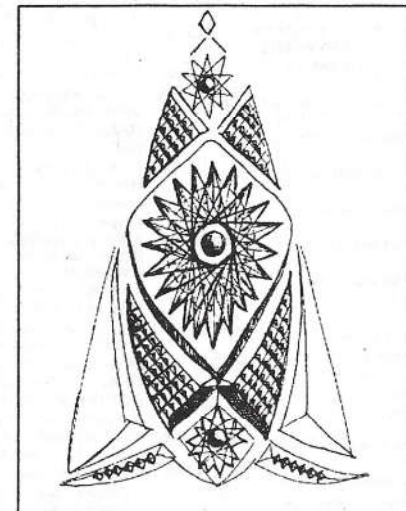
Detail of BLAZE pattern (Imperial's #3437)
as seen on a master berry bowl



No. 409 pitcher.

For
tumbler
to match
see page 83.

CRABCLAW pitcher (#409) as illustrated in the Imperial
catalog 1909



Detail of HOBSTAR FLOWER pattern (Imperial's #302)
as seen on a decanter

BURNS AUCTION - PRICE RESULTS

(255 items - full listing)

2. 1. (2) Imperial Hazed Stemmed Sherbets & (1) Depression Era Sherbet - Mari.
 25. 2. Imperial Long Hobstar Large Round Fruit Bowl Top - Dk. Mari.
 10. 3. Imperial Soda Gold Spilloon - Lt. Mari.
 4. Late Barrel Shaped Vase with Ribbed Bands - Lt. Mari.
 295. 5. FENTON DRAGON AND LOTUS SPATULA FTD. RUFFLED BOWL - LIME GREEN OPAL. (RARE AND DESIRABLE; MAY HAVE ROUGH KNOBS ON FEET)
 17. 50. 6. Fenton Peacock and Grape Ruffled Bowl with 3 in 1 Edge - Amy. (scarce; goldish irid.)
 35. 7. Fenton Diamond Rib Standard Swung Vase - White (very scarce color - nice and frosty)
 150. 8. Dugan Stippled Petal Domed 10 Ruffled Bowl - Pur. (scarce color)
 5. 9. 6" Dugan Smooth Rib Interior / Jewelled Heart (CRACKED) Exterior 8 Ruffled Sauce - Pur. (very attractive)
 5. 10. 6" Dugan Cherries Interior / Jewelled Heart Exterior 8 Ruffled Sauce - P. Opal. (scarce)
 45. 11. Dugan Weeping Cherries Domed 10 Ruffled Sauce - Mari. (very scarce pattern)
 25. 12. Dugan Pony 6 Ruffled Bowl - Dk. Mari. (nice satiny finish)
 50. 13. Dugan Dogwood Sprays Domed 10 Ruffled Bowl - P. Opal.
 70. 14. Dugan Thin Rib Spittoon Shaped Squatty Vase - P. Opal.
 25. 15. (2) Dugan Question Mark Stemmed Handled Bon Bons - Pur. (selling choice)
 110. 16. 7 3/4" M'burg Little Stars 6 Ruffled Bowl - Green (satiny; a touch silvery)
 225. 17. 7 3/4" M'burg Little Stars 6 Ruffled Bowl - Amy. (satiny with good irid.)
 300. 18. 8 3/4" M'BURG PEACOCK AT THE URN MYSTERY 6 RUFFLED BOWL - GREEN (NICE SATINY IRID.)
 85. 19. 7 3/4" FENTON ACORN 8 RUFFLED BOWL - P. OPAL. (DK. MARI. WITH OPAL. EDGE)
 210. 20. FENTON FLORAL AND GRAPE WATER PITCHER - WHITE (SUPER PINK AND BLUE HIGHLIGHTS)
 125. 21. 9 1/2" FENTON PEACOCK AND GRAPE COLLAR BASED PLATE - MARI.
 50. 22. 9 1/4" FENTON PEACOCK AT THE URN PLATE - BLUE (SUPER IRID.)
 95. 23. Fenton Peacock at the Urn Ruffled Compote - Lt. Blue / Mari. Overlay (odd lint)
 20. 24. Fenton Holly Jack in the Pulpit Hat with Tight Crimped Edge - Red (silvery)
 20. 25. Fenton Holly Jack in the Pulpit Hat with Tight Crimped Edge - Amber (nice ind.)
 25. 26. Fenton Swan - Celeste Blue
 70. 27. Fenton Kittens Cup and Saucer - Lt. Mari.
 28. Fenton Kittens Saucer - Mari. (silvery)
 60. 29. Fenton Kittens Cereal Bowl - Dk. Mari. (nice)
 20. 30. Fenton Kittens 2 Sides Up - Mari.
 30. 31. Fenton Kittens Square - Blue (chipped and sanded on edge)
 35. 32. FENTON KITTENS TOOTHPICK HOLDER - BLUE (IRID. ON OUTSIDE ONLY)
 30. 33. Fenton Kittens Ruffled Toothpick Holder - Dk. Mari.
 45. 34. Fenton Kittens Odd Ruffled Toothpick Holder - Dk. Mari.
 15. 35. Fenton Kittens 2 Sided Card Tray - Mari. (pinched in on top edge)
 0. 36. Fenton Kittens Square Bowl - Mari.
 60. 37. Fenton Kittens 6 Ruffled Bowl - Mari.
 50. 38. Fenton Kittens Tall Toothpick or Vase - Mari.
 220. 39. Fenton Orange Tree Hatpin Holder - Blue (chips on feet)
 40. 40. Fenton Ribton Tie 6 Ruffled Bowl - Amy (real nice satin irid.)
 55. 41. Fenton Milady Tumbler - Blue (silvery)
 70. 42. Fenton Blueberry Tumbler - Blue (red and gold highlights)
 45. 43. Fenton Butterfly and Fern Tumbler with Manuf. Ground Base - Green (super)
 55. 44. Fenton Blackberry Block Tumbler - Blue (red and gold highlights)
 95. 45. (6) Fenton Enameted Crocus Variant Tumblers - Mari.
 425. 46. FENTON DRAGON AND LOTUS ICE CREAM SHAPED BOWL - REVERSE AMBERINA (RARE COLOR; SMOOTHED SPOT ON EDGE)
 175. 47. 6 1/2" FENTON PINE CONE PLATE - GREEN (SCARCE; REALLY NICE HIGHLIGHTS)
 45. 48. 9" Fenton Holly Ruffled Bowl - Blue (ind. outside only; small flake on edge)
 75. 49. 8" Fenton Stritch Rose Bowl - Red (nice dark color)
 375. 50. FENTON HOLLY RUFFLED HAT SHAPE - RED (SUPER COLOR AND IRID.)
 50. 51. Fenton Waterlily and Cattails Ruffled Toothpick - Mari.
 22. 50. 52. Fenton Persian Medallion Hair Receiver Mari. (small hairline)
 90. 53. Fenton Orange Tree Shaving Mug - Amy. (rare size in this color; some wear inside)
 225. 54. FENTON PERSIAN MEDALLION ROSE BOWL - AMY. (VERY RARE COLOR FOR THIS ITEM - AVERAGE IRID.)
 45. 55. Fenton Strich Handled Cake Plate - Ice Green BLUE
 95. 56. Fenton Feather Stitch Deep Round Bowl - Blue (very scarce shape - nice color)
 130. 57. Fenton Stag and Holly Large Ball ftd. Ruffled Bowl - Blue (nice color and ind.; slight roughness)
 30. 58. Fenton Engaved Grape Covered Candy Dish - Lt. Mari.
 105. 59. Fenton Kittens Cereal Bowl - Mari.
 1,750. 60. 21 1/4" FENTON RUSTIC FUNERAL VASE WITH PLUNGER BASE - BLUE (SUPER; RARE WITH GREAT COLOR, SHAPE AND IRID.)
 110. 61. 7 - 7 1/2" Fenton Vintage 6 Ruffled Bowl with Horlacher Advert. - Mari. (scarce advertising item)
 200. 62. Fenton 2 Rew Open Edge Jack in the Pulpit Hat Shape - Aqua (scarce color)
 600. 63. 8 3/4" N EMBROIDERED MUMS 8 RUFFLED BOWL - AMY. (VERY DESIRABLE; SUPER COLOR AND IRID.)
 1,000. 64. 9 1/2" N POPPY SHOW PLATE - BLUE (LACKS IRID. IN CENTER)
 250. 65. 9 1/4" N Good Luck Plate with Basketweave Exterior - Pur. (satiny; nicks on horseshoe)
 1,050. 66. 9" N PEACOCKS 8 RUFFLED BOWL - AQUA OPAL. (RARE AND DESIRABLE; LIGHT BUTTERS-COTCH OVERLAY, NICE OPAL.)
 250. 67. N Round Bushel Basket - White (frosty and nice)
 200. 68. 7 1/2" N FRUITS AND FLOWERS 6 RUFFLED BOWL - BLUE (RARE COLOR; NICE IRID.)
 17. 50. 69. N Dandelion Tumbler - Dk. Mari. (chip on collar base)
 32. 50. 70. N Oriental Poppy Tumbler - Amy. (silvery)
 675. 71. N ROSE SHOW PLATE - PUR. (GREAT COLOR AND IRID.; HAS ROUGH SPOT ON ONE ROSE)
 725. 72. N LATTICE AND POINSETTIA FTD. RUFFLED BOWL - PUR. (SUPER COLOR AND IRID.; NICE EXAMPLE)
 60. 73. 9 1/2" N G & C Stippled Ruffled Bowl with Basketweave Exterior - Mari. (nice color finish)
 100. 74. Pair 8 1/2" N Florentine Candlesticks - Husset Green (stretch)
 70. 75. N Enamelled Cherries Ground Base Tumbler - Elec. Blue (fantastic)
 40. 76. N Leaf and Beads ftd. Rose Bowl with Floral Interior - Dk. Mari.
 50. 77. N Nippon 8 Ruffled Bowl with Basketweave Exterior - Dk. Mari. (nice satiny finish)
 32. 50. 78. (2) Imperial Grape Wines - Pur. (red and gold irid.; selling choice) x 1 - CRACKED = 5.00
 350. 79. IMPERIAL CORN BOTTLE - SMOKE (BEAUTIFUL IRID.; SMALL CHIP ON TOP; SUPER ITEM)
 32. 50. 80. 9" Imperial Grape Plate with Exterior Pattern Only - Amberina (not iridized)
 22. 50. 81. Imperial Tulip and Cane Stemmed Goblet - Dk. Mari.
 55. 82. Imperial Embossed Scroll Compote with Plain Exterior - Pur. (super)
 115. 83. 5" Imperial Morning Glory Swung Vase - Smoke (dark and nice)
 40. 84. Imperial Windmill Tumbler - Helios Green
 100. 85. Imperial Woodpecker Wall Vase - Dk. Mari.
 60. 86. 7" Imperial Morning Glory Swung Vase - Smoke
 25. 87. Imperial Soda Gold Salt Shaker - Lt. Blue / Mari. (crack at lid)
 75. 88. 8" Imperial Ripple Swung Vase - Amber (super ind.)
 70. 89. 10" Imperial Ripple Swung Vase - Pur. (super irid.)
 90. 90. Imperial Cobblestone Ruffled Bowl - Amy. (silvery / gold irid.)
 60. 91. Imperial Flute Toothpick Holder - Mari.
 90. 92. Imperial Flute Toothpick Holder - Pur. (nice)
 30. 93. Imperial Bellaire Goddwill Tour Deep Round Bowl - Mari.
 35. 94. Westmoreland Louisa ftd. Oval Individual Berry Bowl - Aqua Teal (manuf. pinheads on edge)
 35. 95. Westmoreland Miniature ftd. Shell - Aqua Teal
 450. 96. 11" DUGAN FOUR FLOWERS CHOP PLATE WITH SODA GOLD EXTERIOR - P. OPAL. (DARK WITH 3" OF OPAL.)
 30. 97. Dugan Stork and Rushes Handled Basket - Crystal (not iridized)
 100. 98. Dugan Constellation Compote - Dk. Mari. (scarce color)
 140. 99. DUGAN PERSIAN GARDEN DEEP ROUND PUNCH BOWL WITH RUFFLED BASE - MARI. (SMALL CHIP ON BASE)
 60. 100. Dugan Jewelled Heart Exterior Rays Interior Plate with Tight Crimped Edge - Pur.
 45. 101. Dugan Lattice and Points Ruffled Hat Shape - P. Opal.
 50. 102. Dugan Free Form Blob Top Swung Vase - Mari.
 45. 103. Dugan Peacock at the Fountain Tumbler - Blue (super example)
 65. 104. Dugan Stork and Rushes Lattice Band Tumbler - Blue
 550. 105. DUGAN STORK AND RUSHES WATER PITCHER WITH LATTICE BAND - BLUE (VERY RARE ITEM; 1ST I'VE SEEN WITH LATTICE BAND)
 110. 106. U.S. Glass Field Thistle Water Pitcher - Dk. Mari. (nice example)
 45. 107. Fostoria Brocaded Acorns Domed ftd. Compote - Ice Blue
 12. 50. 108. Cambridge Heart Band Mug - Lt. Mari.
 X. 109. Heisey Type Octagonal Salt Dip - Lt. Mari.
 5. 110. Westmoreland King's Crown Goblet - Mari. To Clear Buzz Saw Small Size Cruet with No Stopper - Green
 80. 111. N BUTTERFLY 2 HANDLED BON BOW WITH SPIRAL EXTERIOR - ELEC. BLUE (RARE; SUPER COLOR AND IRID.)
 825. 112. N G & C STIPPLED PLATE WITH RIBBED EXT. - PUR. (VERY SCARCE; NICE COLOR AND IRID.)
 300. 114. 9" N DRAPERY SWUNG VASE - ICE BLUE (PERFECT; REALLY NICE COLOR AND IRID.)
 275. 115. N G & C HATPIN HOLDER - PUR. (SCARCE; NICE BRIGHT IRID.)
 600. 116. N PEACOCKS BOWL WITH PIE CRUST EDGE AND RIBBED EXTERIOR - GREEN (VERY SCARCE; SUPER COLOR AND IRID.)
 850. 117. N IVY TOWN PUMP - PUR. (VERY SCARCE; NICE COLOR AND IRID.)
 155. 118. N Fine Cut and Roses ftd. Rose Bowl - Amy. (very scarce; perfect with really nice ind.)
 140. 119. N Leaf and Beads ftd. Rose Bowl - Elec. Blue (really nice color and irid.)
 550. 120. N PEACOCK AT THE URN MASTER ICE CREAM BOWL - PUR. (SUPER BRIGHT COLOR AND IRID.; REALLY NICE)
 280. 121. 10 1/2" N G & C MASTER ICE CREAM BOWL - WHITE (SCARCE; NICE MULTI-COLORED IRID.)
 275. 122. N Three Fruits Plate with Basketweave Exterior - Pur. (really nice color and ind.; pretty piece)
 750. 123. N GOOD LUCK 8 RUFFLED BOWL WITH RIBBED EXTERIOR - ELEC. BLUE (SUPER COLOR AND IRID.)
 60. 124. N Fruit and Flowers 2 Handled Stemmed Bon Bon - Pur. (nice color and ind.; very minor wear on fruit)
 45. 125. N G & C 2 Handled Bon Bon - Pur. (nice color and ind.)
 110. 126. N G & C PinTray - Pur. (scarce; silvery; lacks irid. on one side)
 22. 50. 127. N G & C Punch Cup - Pur. (really nice color and ind.)
 100. 128. N Daisy and Plume ftd. Rose Bowl with Berry Interior - Blue (very scarce; nice color and ind.; minor roughness on feet)
 120. 129. N Beaded Cable ftd. Rose Bowl with Rayed Interior - Pur. (super color and ind.; excellent example)
 40. 130. N Daisy and Plume Stemmed Ruffled Compote - Pur. (nice color and ind.)
 50. 131. N Beaded Cable ftd. Rose Bowl with Rayed Interior - Pur. (silvery ind.)
 125. 132. N Fine Cut and Roses ftd. Rose Bowl - Pur. (average color and ind.; odd shape - sides go straight up)
 40. 133. N Wild Rose ftd. Nut Bowl - Pur. (goldish)
 15. 134. N Wild Rose ftd. Plate - Mari. (odd shape)
 100. 135. N Singing Bird Handled Mug - Pur. (nice color and ind.)
 60, 45 x 3. 136. (4) N Singing Bird Handled Mugs - Pur. (average color and ind.)
 47. 50. 137. N Sunflower Spatula ftd. Ruffled Bowl - Pur. (silvery; lacks ind. in center) x 1 - CRACK
 45. 138. N Fine Cut and Roses ftd. Ruffled Candy Dish - Pur.
 17. 50. 139. N Smooth Rays Deep Ruffled Compote / Parfait - Green (goldish ind.)
 15. 140. N Lustre Flute Ruffled Hat - Pur. (silvery)
 45. 141. 12" Imperial Ripple Swung Vase - Pur. (super color and ind.)
 70. 142. 8" Imperial Heavy Grape Plate - Pur. (really nice color and ind.; minor wear on grape)
 45. 143. Pair 7" Imperial Six Paneled Candlesticks - Smoke (nice irid.; well matched set)
 500. 144. M'BURG SEACOAST PIN TRAY - AMY. (SCARCE AND PERFECT; A LITTLE SILVERY; LACKS SOME IRID. ON FISH)
 100. 145. M'burg Holly Spring Singled Tri-cornered Nappy - Amy (super radium finish; nice ind.)
 325. 146. M'BURG ISAAC BENESCH & SONS 6 RUFFLED BOWL - AMY. (SATINY; SPOTTY IRID.)

13. 147. Westmead Island Stork ABC Bowl - Mari.
700. 148. DUGAN FORMAL JACK IN THE PULPIT VASE - PUR. (VERY DESIRABLE; RARE AND NICE)
350. 149. 8" DUGAN CIRCLE SCROLL SWUNG VASE - PUR. (VERY SCARCE; SUPER COLOR AND IRID.)
120. 150. 6" DUGAN CIRCLE SCROLL SWUNG VASE - MARI. (SCARCE; NICE COLOR AND IRID.)
210. 151. 9" Dugan Fanciful Plate - Pur. (gold / silver irid.)
275. 152. DUGAN BROOKLYN BRIDGE 10 RUFFLED BOWL - MARI. (SCARCE; NICE COLOR AND IRID.; RADIUM FINISH)
65. 153. Dugan Constellation Stemmed Ruffled Compote - White (nice color and irid.)
65. 154. Dugan Holly and Berry Single Handled Ruffled Nappy - Pur. (nice color and irid.)
45. 155. Dugan Puzzle 2 Handled Stemmed Compote - Pur. (really good example; great color and irid.)
- 17.50. 156. 8" Dugan Twigs Swung Vase - Mari. (irid. on top half - bottom clear)
- 12.50. 157. Dugan Leaf Rays Tri-Cornered Nappy - Mari. (nice irid.)
55. 158. Big Butterfly Hatpin - Dark (nice irid.)
70. 159. Top of the Walk Hatpin - Mari. (scarce; really nice irid.)
130. 160. Triangular Flying Bal Hatpin - Pur. (very scarce; nice irid.)
85. 161. Cattail Hatpin - Pur. (scarce nice irid.)
65. 162. Triplets Hatpin - Pur. (nice irid.; a little out of round)
375. 163. Beetle Hatpin - Pur. (looks like a bug! really neat)
- 17.50. 164. Beetle Button - Pur. (nice)
10. 165. (9) Hexagonal Button - Pur. (nice set)
25. 166. (3) Assorted Buttons - Pur. (some nice ones)
25. 167. Pair of Iridized Shoe Buckles / Clips - Amy. (nice irid.; different)
45. 168. Dugan Pony 6 Ruffled Bowl - Mari. (nice color and irid.)
45. 169. Dugan Cherries ftd. Ruffled Bowl - Mari. (nice color and irid.)
30. 170. Dugan Question Mark 2 Handled Stemmed Bon Bon - Mari. (nice color and irid.)
50. 171. Dugan Beaded Basket - Mari.
10. 172. 11" Dugan Target Swung Vase - Mari. (irid. a bit spotty)
55. 173. Dugan Double Stem Rose Ruffled Domed ftd. Bowl - P. Opal. (good color and irid.; nice example)
20. 174. Dugan Double Stem Rose Ruffled Domed ftd. Bowl - Mari. (nice color and irid.)
450. 175. 10" FENTON FINE RIB STANDARD SWUNG VASE - RED (CHERRY RED WITH RED AND GOLD IRID.; NICE EXAMPLE)
35. 176. 10 1/2" Fenton Fine Rib Standard Swung Vase - Blue (really nice color and irid.)
30. 177. 7" Fenton Butterfly and Berry Swung Vase with Candy Ribbon Edge - Mari. (really nice color and irid.; a cute piece)
115. 178. Fenton Kittens 4 sides up Bowl - Mari. (scarce with nice color and irid.)
50. 179. Fenton Blackberry Miniature Stemmed Compote - Blue (perfect; a little silvery)
160. 180. Fenton Horsehead Medallion ftd. Rose Bowl - Dk. Mari. (super example - excellent detail and irid.)
260. 181. FENTON 2 ROW OPEN EDGE BASKET - RED (SCARCE; NICE SATINY IRID.)
275. 182. FENTON 2 ROW OPEN EDGE BASKET - RED (SCARCE; CHERRY RED WITH SILVERY IRID.)
35. 183. Fenton Orange Tree Standard Handled Mug - Blue (manuf. split on edge; silvery)
800. 184. FENTON DRAGON AND LOTUS ICE CREAM SHAPED BOWL - RED / AMBERINA (VERY SCARCE AND DESIRABLE)
35. 185. 7 1/2" Fenton G & C Ruffled Bowl - Blue (nice satiny irid.)
15. 186. 7 1/2" Fenton G & C Ruffled Bowl - Mari.
25. 187. Fenton Holy Square Crimped Edge Hat - Mari. (odd shape; nice color and irid.)
25. 188. Fenton Blackberry Spray Ruffled Hat - Blue
20. 189. Fenton Holly Ruffled Hat - Blue (a little silvery)
165. 190. Fenton Ribbon Tie Low Bowl with 3 in 1 Edge - Blue (pretty nice color and irid.; tiny pinhead on edge)
425. 191. FENTON HOLLY FLAT PLATE - BLUE (REAL NICE COLOR AND IRID.; SATINY; A PRETTY PLATE)
200. 192. FENTON ORANGE TREE FLAT PLATE - WHITE (NICE MULTI-COLORED IRID.)
193. 193. 8" Fenton G & C Ball ftd. Ruffled Bowl - Green (nice satiny irid.)
35. 194. Fenton Peacock and Grape Spatula ftd. Ruffled Bowl - Green (scarce; lacks irid. in center)
25. 195. 8" Fenton G & C Ball ftd. Ice Cream Shaped Bowl - Mari. (nice color and irid.)
80. 196. 8" Fenton Slag and Holly Spatula ftd. Ice Cream Shaped Bowl - Green (really nice color and irid.; chip on one foot)
20. 197. 8" Fenton Coin Dot 6 Ruffled Bowl - Amy. (nice color and irid.)
- 27.50. 198. Fenton Cosmos 6 Ruffled Bowl - Mari. (nice satiny irid.)
30. 199. Fenton Birds and Cherries 2 Handled Bon Bon - Blue (really nice color and irid.; tiny pinhead)
30. 200. Fenton Butterflies 2 Handled Bon Bon - Green (nice color and irid.)
40. 201. Fenton Butterflies 2 Handled Bon Bon, 4 sides - Blue (satiny; a little silvery)
- 37.50. 202. Fenton Peacock Tail 2 Handled Bon Bon - Amy. (nice color and irid.)
45. 203. Fenton Pond Lily 2 Handled Bon Bon, 4 sides up - Blue (super irid; nice example)
55. 204. Fenton Wreath of Roses Stemmed 2 Handled Bon Bon - Green (nice color and irid.)
55. 205. Fenton Vintage 2 Handled Bon Bon, 4 sides up - Blue (nice satiny irid.)
- 17.50. 206. Fenton Peacock at the Urn Stemmed Ruffled Compote - Dk. Mari. (super example; great color and irid.)
10. 207. Fenton Blackberry Spray Ruffled Hat - Mari.
- 32.50. 208. Imperial Frosted Block Plate - Clam. (marked "Made in the USA")
45. 209. U.S. Glass 1909 Shriner's Champagne Glass - Clear (scarce)
10. 210. Pastel Swan Salt - Ice Green (not carnival; minor roughness)
10. 211. Be Wise Owl Bank - Mari.
15. 212. LBJ Hat Ashtray - Mari.
5. 213. Liberty Bell Bank - Mari.
214. 214. Kittens Baby Lottle - Clear (not carnival; really neat and scarce)
25. 215. Golden Wedding Quart Bottle - Mari.
20. 216. Golden Wedding Pint Bottle - Mari.
20. 217. Golden Wedding 1/2 Pint Bottle - Mari.
30. 218. Golden Wedding "Nip" Bottle - Mari. (scarce)
40. 219. 6 1/2" Frolicking Bears Plate - Teal (really different; looks newer)
35. 220. Late Fenton "Diamond Rib" Handled Basket - ftd (signed Fenton; pretty piece)
250. 221. European (?) Footed Cookie / Cake Stand with Etched Design - Mari. (neat piece; unusual)

FENTON

222. Depression Era Louisa ftd. Oval Bowl - Mari.
20. 223. 1969 ACGA "In God We Trust" Handled Mug - Teal / Blue
- 22.50. 224. 1980 ICGA Miniature Ivy Town Pump - Mari.
100. 225. 1981 ICGA Frolicking Bears Ruffled Spitoon - Aqua Opal.
75. 226. 1982 ICGA Frolicking Bears Ruffled Spitoon - Red
25. 227. Tree of Life Pedestal Based 7 pc. Water Set - Mari. (super set)
250. 228. 10" Depression Era Plate - Mari.
5. 229. Indiana Glass "Golden Grape" Water Pitcher - Blue (wow!)
325. 230. 10 1/2" DUGAN HEAVY GRAPE LG. RUFFLED BOWL WITH COMPASS EXTERIOR - P. OPAL (VERY RARE AND DESIRABLE, ESPECIALLY IN THIS COLOR - NICE)
15. 231. Dugan Stippled Petals domed Ruffled Bowl - Pur. (very scarce in this color; nice irid.)
40. 232. Dugan Grape Delight 6 ftd. Ruffled Rose Bowl - Pur. (nice color; chip on one grape)
485. 233. DUGAN STORK AND RUSHES 7 PC. WATER SET WITH BEADED TOP - BLUE (RARE SET AND THIS IS A NICE ONE)
40. 234. 10 1/2" FENTON PERSIAN MEDALLION CHOP PLATE - BLUE (RARE AND DESIRABLE WITH ABOVE AVERAGE IRID.)
235. 235. FENTON ORANGE TREE LARGE FTD. RUFFLED FRUIT BOWL - BLUE (A BEAUTIFUL EXAMPLE WITH BRIGHT IRID.)
70. 236. Fenton Birds and Cherries 2 Handled Bon Bon - Blue (great color and detail)
70. 237. 18" Fenton Rustic Mid Size Swung Vase with Tight Crimped Edge - Blue (large item with nice color and irid.)
75. 238. N G & C Bowl with Pie Crust Edge and Plain Exterior - Amy. (great color and irid.)
239. 239. 5 3/4" Imperial Miniature Ripple Swung Vase - Pur. (what a little cutie!)
240. 240. 11" Imperial Ripple Swung Vase - Pur. (super color and irid.)
241. 241. 7 1/2 - 8" Imperial Open Rose Deep Round Flared Bowl - Pur. (a beauty with great detail)
242. 242. Imperial Ribbed Jack in the Pulpit Vase - Dk. Mari. (nice color and irid.)
243. 243. 8 1/2" Imperial Smooth Rays Flat Plate - Smoke (a beauty!)
244. 244. IG Daisy Handled Flower Basket - Smoke (new but nice)
245. 245. Lattice Swung Vase - Blue Opal. (not carnival)
246. 246. Imperial Star and File Lg. Round 2 Handled Bon Bon - Mari.
247. 247. Imperial Swirl Swung Vase - Mari.
248. 248. Dugan Twig Swung Bud Vase - Mari. / Clear
249. 249. (2) Imperial Twins Fruit Bowl Base Only - Mari.
250. 250. 3 ftd. Console Base Only - P. Opal.
251. 251. St. Clair Elks Small Plate in Original Box - Mari.
252. 252. Fire King Small Cup and Saucer - Mari. / Milk Glass
253. 253. New Maple Leaf 7 pc. Water Set - Blue (great color)
254. 254. New Maple Leaf 4 pc. Table Set - Pur. (great color)
255. 255. New Panelled Flower Pitcher - Green

BURNS

AUCTION SERVICE

1996 N.E.C.G.A. Convention Auction

6:00 pm, Friday, September 6, 1996

Preview: 4:00 pm

at the Ramada Hotel

1080 Riverdale St.

West Springfield, Mass. 01089

(Located off Mass Pike Exit 4, then Rte 4 South or Exit 13B off I-91)

(413) 781-8750

SOME BAD NEWS

Dear HOACGA,

I'm sorry that I haven't written sooner to let you know my husband Gerald "Red" Logan passed away October 24, 1996.

We have not been active with HOACGA, meetings, conventions and such, but have always enjoyed the bulletin.

Virginia Logan
1619 S. 49th Terr.
Kansas City, MO 66106-2313

Dear HOACGA,

It is with a breaking heart that I must report the death of my husband, Robert, on February 6th, 1997. I do not plan to renew our membership in HOACGA. I will probably be selling our small collection, but have made no definite plans at this time.

Bob and I both enjoyed the years we were rather active collectors. Following our retirement budget constraints put an end to our collecting, but we continued to enjoy attending some of the auctions some of the auctions near us, and always enjoyed reading the bulletin.

Virginia Cunningham
705 Peyton St.
Emporia, KS 66801-3265

CORRESPONDENCE

Dear HOACGA,

I am sending in my dues early this year while it's on my mind - I don't want to miss even one issue - and my notebook is up-to-date, I think - The last one I got was #1 on vases - Is that the latest?

I do appreciate the great job you folks do for this club, and I thank you.

George Bond
Orlando, FL

GOLDEN PRESS WINE BOTTLE

By Greg Dilian



Last summer at an antique flea market in New York State, I came upon the bottle pictured above in a crowd of other bottles.

While I am not a bottle collector, the excellent marigold iridescence of this one warranted me to purchase it, especially since it came bearing the cap and paper label.

I was not sure of the pattern or how to research my find. I checked under Gold Press which appears on the label, research pattern names starting with the word "Keg" as this is what the bottle resembles, and several other possibilities that came to mind (e.g. barrel, wine, etc.).

Finally, I resigned myself to the inevitable. I went through the Hartung series page by page, book by book. Then, lo and behold in Book 6 on page 83 appeared my bottle under the name Peach Wine Bottle. I found this strange as the flavor on my bottle is Blackberry. Now I am aware that in Carnival Glass, items are named according to shape (Jack-in-Pulpit vase), size (Miniature

Blackberry compote), or texture (Stippled Rays). This is the first time I have come across something named for the flavor of its contents. Are flavors available other than Peach and Blackberry? It's funny to think of the tangents one's mind takes when he or she collects Carnival Glass.

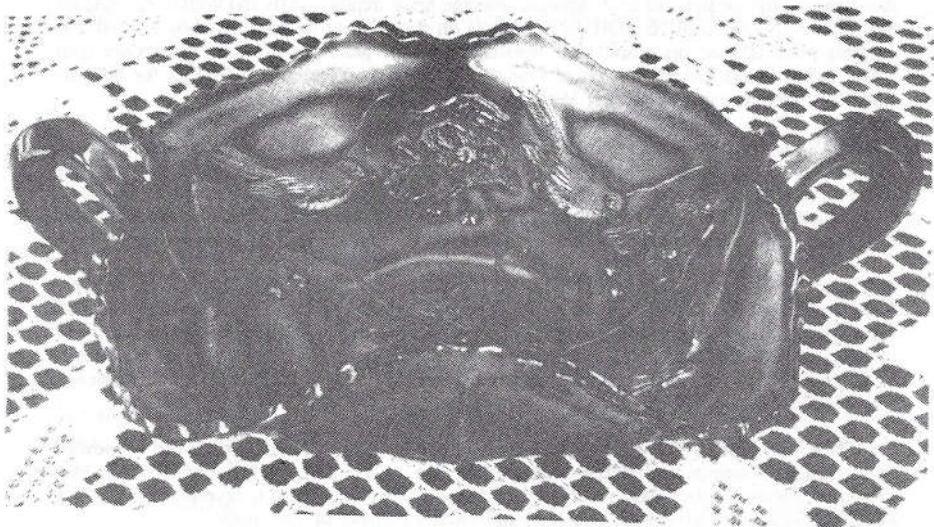
Anyway, this bottle comes in good, deep marigold and looks like a wine barrel or keg. The mold work is very nice and quite detailed. A row of bunches of grapes circles the upper part of the bottle just before it narrows to the neck. The wine was produced by the New England Wine Company. The volume of wine once contained in the bottle was one quart and the piece is 10½" tall.

I wrote this article to assist anyone who may come upon this bottle, sans label, and have trouble researching it. The bottle with label and metal cap has been selling in the \$100 range. It is a nice addition to add to any collection. Maybe, however, the name should be changed to something more descriptive of the glass and not the flavor of the wine.

RESOURCE INFORMATION

- HARTUNG CARNIVAL GLASS PATTERN BOOKS**
Set of 10 books for \$60.00 plus \$6.00 postage. Order from Ed Kramer, Secretary HOACGA, 4305 W. 78th Street, Prairie Village, KS 66208
- HOACGA EDUCATIONAL SERIES BOOK I** - 148 articles with pictures (black & white) on a variety of carnival glass patterns. Books consists of articles written by John & Lucile Britt which have been printed in previous monthly bulletins. \$15.00 plus \$2.50 postage. Order from Ed Kramer, Secretary HOACGA, 4305 W. 78th Street, Prairie Village, KS 66208
- HOACGA EDUCATIONAL SERIES BOOK II** - 180 articles with pictures (black & white) on carnival glass tumblers. Book consists of articles written by John & Lucile Britt which have been printed in previous monthly bulletins. \$17.50 plus \$2.50 postage. Order from Ed Kramer, Secretary HOACGA, 4305 W. 78th Street, Prairie Village, KS 66208
- THE ENCYCLOPEDIA OF CARNIVAL GLASS LETTERED PIECES.** 120 pages of black & white and color photographs of all known carnival glass advertising and commemorative pieces. \$15.95 plus \$2.50 postage. Order directly from John D. Resnik, 235 Walnut Street, Statesville, NC 28677
- COLLECTOR'S GUIDE TO NORTHWOOD'S CARNIVAL GLASS** by Carl O. Burns. This Northwood book includes 166 pages with 250 pieces pictured in full color, including many rarities never shown in any carnival glass book. \$24.95 plus \$3.00 Shipping. Order from Carl O. Burns, 60 Rumford Center Rd., Andover, MA 04216 (Mention you are a member of HOACGA)
- MILLERSBURG CARNIVAL GLASS BOOK** by Marie McGee. \$29.95 for paperback, \$37.95 for Hardback. Please include \$3.50 extra for shipping. Send orders to 3906 E. Acacis Ave., Fresno, CA 93726
- THE WORLD OF ENAMELED CARNIVAL GLASS TUMBLERS** by Cecil Whitley. Book on painted Carnival Glass tumblers. Ten pages of full color photographs of sixty painted tumblers. \$10.00, postage included. Order from Cecil Whitley, 1041 Cheshire Lane, Houston, TX 77018
- NEW! NEW! NEW! IRIDESCENT HATPINS & HOLDERS of the CARNIVAL GLASS ERA** by Jerry Reynolds. \$16.50 - book. \$3.25, Priority or \$1.65 Book Mail. Canada, \$17.60. Order from Jerry Reynolds, 1305 N. Highland Pkwy, Tacoma, WA 98406
- MORDINI'S 1996 CARNIVAL GLASS AUCTION PRICE REPORT** - Auction price report for 1996 is available. Over 5000 entries. \$10.00 postage included. \$9.00 if two or more ordered. Please specify year when ordering. Canadian friends should send Canadian Postal Money Order. Overseas mailings add \$3.00 for each copy. Back issues are available for 1990-1995 at \$9.00 each. Order from Tom & Sharon Mordini, 36 N. Mernitz Ave., Freeport, IL 61032
- NETWORK** by Glen & Stephen Thistlewood of Hampshire, England. Quarterly publication devoted exclusively to Carnival glass. One year subscription (4 issues) \$20, available in the US only through PageWorks, P.O. Box 14493, Chicago, IL 60614
- BUTTON, BUTTON.** Carnival Glass, Iridescent, Luster Buttons. Over 100 buttons listed - Over 140 pages packed with information. Each button has a color and black & white photo, detailed drawing & description - shown in actual size. \$15.50, postage included. Order from Clint Arsenault, P.O. Box 1845, Monrovia, CA 91017
- THE SANCTIFIED CROSS-EYED BEAR'S PRICE TREND GUIDE FOR CARNIVAL GLASS AND INDIVIDUAL SALES SUPPLEMENTAL GUIDE FOR 1996** - The 3rd edition provides the most exhaustive price resource available by covering over 3,000 sales occurring during the years 1992-1996. Reports on over 9,000 sales for the 1996 reporting year alone by informing you of the high, low, and average sales prices. Over 230 full pages that help clarify the upward or downward average price trends. THE INDIVIDUAL SALES SUPPLEMENTAL GUIDE FOR 1996 reports on the pieces that have reached at least 200 in sales price at least once and then reports every sale price for a piece. Reference over 4,100 sales. Send \$24.95 for Trend Guide, \$8.00 for Supplement, or \$30.95 for both to: The Sanctified Cross-Eyed Bear, P.O. Box 1296, Huntsville, AL 35807
- CARNIVAL GLASS HATPIN PATTERNS** - This book shows the hatpins in detail with beautiful illustrations, many showing top and side views. A number of these hatpins have never appeared in any previous carnival books. \$15.00 plus \$1.00 postage & handling. Canada and overseas - \$15.00 plus \$3.00 postage and handling. Order from Alphonse Tvaryanas, 284 Clearstream Rd., Jackson, NJ 08527
- A CARNIVAL OF IRIDESCENT LUSTER BUTTONS, BOOKS I & II.** Book I has 856 named design drawings. Indexed. \$13 ppd. Book II has 450 more drawings, indexed, with price guide covering both books. \$14.00. Canada and Mexico please add \$2.00 (US) to each for extra postal cost. Overseas please add \$4.00 (US) to each for surface mail. Add \$6.00 (US) each for air mail. Order from author Ruth M Clark, 2100 Dawn Dr., Georgetown, TX 78628.
- CARNIVAL GLASS OF AUSTRALIA** - 100 pages, some colored, hard cover. Produced by Australian Carnival Enthusiasts Association, Inc. Cost \$20.00, this includes Air Mail Postage. Please contact Mrs. Margaret Dickinson, Secretary. R.S.D. Fryerstown, Victoria, Australia 3451, for advice on the uncomplicated purchase of this book.
- THE CARNIVAL HUNTER'S COMPANION**, a unique cross-referencing system for easy identification of pattern features and names. \$27.95 ea., includes shipping. Texas residents add \$2.06 tax. Check payable to Elaine Blair, P.O. Box 116335, Carrollton, TX 75011-6335, 214-492-1528
- A CARNIVAL OF IRIDESCENT LUSTER BUTTONS, BOOK III - 1997 EDITION** contains 391 pattern drawings not found in Books I and II by Ruth M. Clark, plus color photographs of 87 buttons. \$13.50 postpaid in USA; \$14.50 (US) postpaid in Canada; \$16.50 (US) postpaid in England; \$17.50 postpaid in Australia. Order from author: Alan G. Perry, 7614 McHenry St., Houston, TX 77087-3834
- SKETCHBOOK OF LITTLE CARNIVAL GLASS BUTTONS, 1996 EDITION** contains drawings and descriptions of 342 little old buttons (less than 5/8" diameter). Loose-leaf format for easy annual update, and geometric classification for easy identification. Indexed. \$11.50 PPD, Canada and Mexico please add \$2 US to each for extra postage. Overseas please add \$4 US surface or \$6 airmail. Order from author: Jane O. Dinkins, 1100 Ridgeley Dr., Houston, TX 77055, 1-713-465-0557. Owners of 1995 edition may receive 1996 update pages by sending \$1 for postage.
- IMPERIAL GLASS - IDENTIFICATION AND VALUE GUIDE** by Carl O. Burns. Price \$18.95 plus \$2.50 shipping (Canadian US funds plus \$3.50 shipping), (Foreign US funds plus \$5.00 shipping) mention you are a member of HOACGA. Order from Carl O. Burns, 60 Rumford Center Rd., Andover, MA 04216
- OLD IMPERIAL 1909 CATALOG REPRINTS FROM THE ORIGINAL CATALOG** The catalog is 13½" by 11" containing 192 pages that are full of Imperial pattern pictures. Price is \$28.00 plus \$4.00 shipping and handling. Order from Lucile Britt, 3048 Tamarak Drive, Manhattan, KS 66503 Phone: (913) 539-1933

WHAT IS THE PATTERN?



What is the pattern called on the old piece (above) we acquired? We can't find it in the Edwards book or anything else we have. Who was it made by? Fenton? Birds and Honeysuckle I believe. Much value?

If someone could take the time to help me out, I sure would appreciate it. We have been collecting for about 15 years (it all started by us buying a piece owned by my great-grandmother), but this one has us stumped. We're still learning for sure.

Please send any response to:
James R. and Ruth A. Dahlman
80 Par Lane
Grand Rapids, MN 55744

TOP TEN

By Gerald Thomas

Looking back at 1996, there were probably three events of significance in the world of Carnival Glass. First, was the discovery and purchase of the only known Aqua Opalescent Grape and cable punch set. Second, was the sale of two Millersburg People's vases in North Carolina. Third, was the rising popularity of Millersburg carnival rarities.

Each year, I scan through the Carnival Glass "Big Bucks" section in Tom and Sharon Mordini's Carnival Glass Auction reports. I like to see what type of glass is on top of the list with respect to collector demand. This year, I couldn't help but notice that 6 out of 10 of the highest selling pieces of Carnival were Millersburg. Usually, Northwood Carnival captures the majority of spots in the top ten sales category. Things may have been different in 1996 because some of the Millersburg rarities have not been offered for sale in recent years. I have always admired the design work in Millersburg carnival and have felt that most Millersburg rarities were under priced. It was nice to see Millersburg on top of the list.

Rising prices for select pieces of Millersburg certainly attest to the rarity and collector value in this unique glassware. Being in the TOP TEN is an honor which Millersburg glassware truly deserves. I suspect we will soon see more Millersburg carnival selling at record prices. Happy glass hunting everyone!

NEW SIZE FOR THE BULLETIN

You will notice that the height (width?) of the bulletin has been reduced by about one inch. With this decrease in size, the bulletin can be mailed at a "letter size" postal rate, which is about a ten percent savings. Three months ago we started having the barcode placed on the address labels which resulted in a small savings also.

These changes were taken in order to reduce the cost of the bulletin. This allows the present membership dues to continue to support the cost of the printing and mailing of the bulletin.

REMEMBERING THE 'GOOD OLE DAYS'

By Pat Call

Those of you who have known us for 30 years can skip this page. You've heard this story before... probably more than once.

One of my favorite recollections of Carnival Glass collecting concerns a little place in Vienna, Virginia that was called "The Swap Shop". In 1967, it carried everything imaginable from household leftovers to perfume and jewelry. It also carried antiques and collectibles if one had the patience to sort through the conglomeration. Monetary credit was given for items brought in to trade, and items could be purchased for a small percentage of additional cash.

We discovered this treasure trove very early in our antiquing experience, when we were "greener than grass". I soon learned how to clean out my closets and trade my unwanted items for glassware, more particularly Carnival Glass.

Over time, the owner of the shop apparently got wise to the fact that we were rapidly becoming knowledgeable in the field of Carnival Glass and she was reluctant to sell to us, even though she couldn't refuse our money.

On one weekend visit, I spotted an Imperial Grape 9" berry bowl in amber... a color that was unknown to collectors at that time. (And this was before Imperial began making the reissues in that color.) The price was \$9.00.

I took it to the counter and the lady said, "You don't want that. It's a repro."

I said, "No... I don't think so. There's no IG on it, and they aren't making anything in this color..."

"That's because Imperial isn't making it," she insisted. "They loaned the moulds to Fenton, and Fenton is doing it for them."

I wasn't about to be deterred. "Well, I'll take my chances." I told her. "Even if it turns out to be new, it would still cost \$9.00"

Grudgingly, the lady took my money and wrapped the bowl. After that, when we went into her shop, she decided that she should do no more trading for antiques, and she remembered me not as Mrs. Call, but as Mrs. Cash.

THE IMPERIAL PROCLAMATIONS

By Carl O. Burns

This month's column will be a little different. I would like to take the opportunity to tell the club membership about an upcoming Carnival Glass event. The National Imperial Glass Collector's Society will hold it's annual convention on June 6th, 7th, and 8th, 1997. It will be held at The Hampton Inn. Undo's West and The Belmont Technical College in St. Clairsville, Ohio. The theme of this year's convention will be "Carnival Glass - The Cinderella of Collectibles".

On Sunday, June 8th, I will be presenting the seminar on Old Imperial Carnival Glass, at 9:30 AM, at The Belmont Technical College. I will have roughly 100 pieces of old Imperial Carnival on display. A professional production company, RoCliff Communications, will be video taping the seminars and convention activities. The proceeds from the future sale of these videos will go to the Imperial Glass Museum Fund. I know that there are quite a few of our HOACGA members that also belong to the NIGCS, and I look forward to meeting some of you there. There are many other exciting activities planned including a seminar by several former Imperial Glass Company employees.

There will also be an all glass Show & Sale on Saturday, June 7th, from 1:00 PM to 5:00 PM, and on Sunday, June 8th, from 11:00 AM to 3:00 PM, at The Belmont Technical College. The NIGCS does this a little different from most conventions. Glass is not sold out of the hotel rooms. This all glass Show & Sale is set up like an Antique Show, in a large hall, with glass dealers from all over the country.

The seminars and the Show & Sale are open to the public, and you need not be an NIGCS member to attend them. As I understand it, the Banquet on Saturday evening is also open to the public. There are other activities, which are for NIGCS members only. These include the Hospitality Room, Social Hours and an Auction. This is the first time that the NIGCS has held a convention with Carnival Glass as it's theme, so it should be quite an event. I hope those HOACGA members who belong to the NIGCS will make plans to attend. If you do not belong to The National Imperial Glass Collectors' Society, why not join? Dues are \$15.00 per year and you can obtain more information by writing to N.I.G.C.S., P.O. Box 534, Bellaire, Ohio 43906. Jean Fry is the Membership Chairperson.

"The Imperial Proclamations" column will continue to appear in the bulletin, but on a more sporadic basis, at least temporarily. I am not only involved with this convention, but I am also hard at work on my next book. Hope to meet many of you folks in St. Clairsville in June!!!

MEET JACK AND ELEANOR HAMILTON

He makes jewelry. Together, they make friends. Since they began attending Carnival Glass conventions they have made countless friends all across the United States.

Many of you are already acquainted with the Hamiltons... but would probably like to know more about this interesting couple. HOACGA asked Eleanor if she would share their story... and their Carnival Glass experiences:

"Jack and I were both born in Texas. I am a native Wacoan and Jack was born in Sherman and moved to Waco when he was eight years old. We met in elementary school in the fifth grade, and we went through Junior High and High School together.

Jack joined the U.S. Marine Corps in 1942 during World War II. He was stationed in Australia and joined the First Marine Division after the Battle of Guadalcanal. He stayed with the First Division and made the initial landing on Okinawa on Easter Sunday, April 1, 1945. He returned to the states and was discharged in November of 1945. Soon after that we started dating and were married on April 6, 1946. We celebrated our fiftieth wedding anniversary last year. We have a daughter and a grandson.

Jack worked for Southwestern Bell Telephone Company for thirty eight years... retiring in 1983.

Back in 1961 on our fifteenth wedding anniversary, Jack gave me a Raspberry water set in amethyst. He paid \$40.00 for this seven piece set.

My first four pieces of Carnival Glass had belonged to my paternal grandmother. They are a green Singing Birds mug and three amethyst Acorn Burrs berry bowls. My grandparents came to Texas from Germany. They bought a farm about twenty miles south of Waco sometime before the first World War. My grandparents and their six children would come into Waco in a horse drawn wagon once a month to do their shopping. In between these trips a country peddler would come by the various farms with all kinds of things to sell, such as pots, pans, needles, thread, etc. If you bought several items, the peddler would give you a gift - a piece of carnival glass. I know that Grandma must have made at least four nice purchases. I enjoyed the beauty of her glass but did not know it was Carnival Glass for several years until I saw an article that was published in our local newspaper about Carnival Glass. I realized that this was the type of glass

that I had. I went to the library and checked out several books about Carnival. That's when I really became interested in the glass.

We have a large collection consisting of bowls, water sets, 9½" plates and compotes. Most of our pieces are small plates and miniatures. My favorite small plate is a green 7½" smooth edge Scroll Embossed, with the reverse pattern of Hobstar and Tassels. Only two of these plates are known at this time. Two of my favorite miniatures are a Tiny Covered Hen, marigold, 2½" x 2" and a Child's Candelabra. The Hen belonged to a local collector in Waco, and she had purchased it from Rose Presznick. The Child's Candelabra which is 4½" high and 4½" across, marigold, was purchased by us at one of John and Lucile Britt's auctions.

Jack likes the Carnival Glass Whiskey bottles. We have quite a few, including all five of the Gold Wedding sizes, from the half gallon to the nip bottle which was a salesman's sample. All are empty now.

We attend four or five glass conventions a year. Texas Carnival Glass convention, HOACGA, SDCCGC, ICGA, ACGA, LLCGC, and ACCGC. Of course we enjoy the glass, but we always look forward to meeting a lot of nice people.

Our first large convention was in 1981. It was the ACGC when Emma Tilton was president. She made these "red necks" from Texas very welcome. We met Ed and Betty Pierce from Penn. and Jack and Geraldine Brown from California... and have been close friends with them since then. These are just some of the nice people that have been met at conventions. Jack is past president of our Texas club... and I have been a seminar speaker at our TCGC, HOACGA, and SDCCGC. We have won awards for our glass displays at several of these conventions.

Jack makes jewelry from broken pieces of Carnival Glass. Chris Harnish gave him a lot of tips when he was learning how to make jewelry. Jack also likes to bowl with a Senior Citizens league.

The one piece of Carnival Glass that I would most like to own - if price was not a factor - the Millersburg Olympic compote.

We are looking forward to seeing many of you at the HOACGA convention in May."

Eleanor Hamilton

PICTORIAL PATTERN PARADE

By John & Lucile Britt



COIN SPOT COMPOTE IN CELEST BLUE

Coin Spot is a simple pattern consisting of alternate rows of indented stippled ovals and plain flat panels. The stem is rather ornate with a finial placed midway down. The finial contains eight of the stippled coin spots that circle the stem. The top of the compote contains eight ruffles. Some examples are flattened out a little more than others.

The colors that we have seen in these compotes are marigold, peach opal, purple, cobalt blue, ice green, blue stretch and our featured celest blue. The cobalt blue examples are hard to find. An example of that color is shown in the Dugan/Diamond book on page 106. The blue stretch and ice green examples are also very hard to find. We haven't seen many of our featured celest blue compotes around either. They are very pretty and most



desirable. One of these sold at auction for \$700.00 in 1994 and another brought \$850 in 1996. These are the only two examples in celest that have been reported sold in the auction reports since 1985.

In the above photo, we show this piece in the goblet shape in ice green. It will really glow under a black light and is certainly a rare piece of carnival glass. I believe that when these coin spot pieces came out of the mold that they were all in this shape and this is one that didn't have the ruffling out tool used on it.

This article on the Coin Spot compotes is our 220'th entry into the Pictorial Pattern Parade. We hope that you have found it interesting. Next month we will cover the rare and beautiful Five Hearts compote.

MILLERSBURG SWIRL HOBNAIL

By Alan & Lorraine Pickup



There is a saying that pretty things come in small packages. And that saying certainly is appropriate in the case of this rose bowl and spittoon. There are many patterns that require some expertise on the part of the collector to name the pattern and maker. This is not one of them. The Millersburg Swirl Hobnail rose bowl is easily recognized by most collectors. And this easy recognition factor may be part of its charm and popularity.

The simplest designs can be the most beautiful. Patterns with hobs seemed to be favored with many of the glass makers and the addition of the swirls not only compliments the hobs but intensifies the iridescence.

This pattern is also available in a swung vase shape and it is obvious that the three shapes were all made from the same mould. Marie McGee's Millersburg Glass book makes reference to a larger Swirl Hobnail "whimsey" rose bowl but doesn't picture it. Does it exist? Or was she thinking of the Hobnail rose bowl and vase "variant", that she points out may be questionable for some collectors.

Swirl Hobnail is considered by some as rare in all shapes and colors. But the use of the description rare we feel is a little overworked. The rose bowl and spittoon shapes are found in marigold and amethyst. A green spittoon with chips sold recently for \$7000 in a Cooper/Albrecht auction in Flint, Michigan. The swung vase can be found in the three colors listed and is also reported in blue. We certainly would class a blue vase and the green spittoon as quite rare. But whether or not all Swirl hobnail pieces are rare or just awfully scarce, they are a nice addition to any collection.

COMING AUCTIONS

Burns Auction Service

PLEASE MARK YOUR CALENDAR FOR OUR NEXT AUCTION

APRIL 4 & 5, 1997

HOLIDAY INN RICHFIELD OHIO

EXIT 11 OFF THE OHIO TURNPIKE

PH# 216-659-6151

CONSISTING OF RARE NIPPON AND NORITAKE, VICTORIAN PATTERN GLASS, AND A VERY NICE SELECTION OF ART GLASS AND MANY GREAT LAMPS.

FLYER WILL FOLLOW SOON

KEYSTONE CONVENTION AUCTION

MAY 23, 1997

AT THE DAY'S INN

BROOKVILLE, PENNSYLVANIA

EXIT 13 OFF I-80

CONVENTION 22nd, 23rd, 24th

ALWAYS GOOD QUALITY AUCTION GLASS AND A GREAT CONVENTION

LINCOLN LAND CONVENTION AUCTION

JUNE 6, 1997

CONVENTION 5th, 6th, 7th

AT MIDWAY MOTOR LODGE

MILWAUKEE, WISCONSIN

WE WILL SELL THE BECTHEL COLLECTION

WOW !!!!!

A.C.G.A. CONVENTION AUCTION

AT THE SHERATON INN

BATAVIA, NEW YORK

OFF I-90

JULY 10, 1997

CONVENTION JULY 9th, 10th, 11th, 12th

CHOICE ITEMS OUT OF 2 GREAT LONG TIME COLLECTIONS

PLUS MANY MORE WE HAVE NOT YET FOUND THE RIGHT AREA OR MOTEL FOR.

COMING AUCTIONS

AT THIS TIME WE WOULD LIKE TO THANK ALL OUR FINE CUSTOMERS FOR A GREAT YEAR IN 1996 AND WE'RE LOOKING FORWARD TO AN EVEN BETTER YEAR IN 1997.

WE THANK YOU FOR ALL YOUR SUPPORT AND UNDERSTANDING. WE TAKE GREAT PRIDE IN OUR WORK AND TRULY UNDERSTAND THAT IT IS YOU FINE FOLKS WHO MAKE OUR BUSINESS WHAT IT IS TODAY.

WE ARE IN A TRANSITION PERIOD OF CHANGING PRINTERS AND AS YOU KNOW, IT IS HARD WHEN YOU CHANGE THINGS, SO BEAR WITH US AND WE WILL WORK IT OUT.

THANK YOU FROM ALL OF US AT BURNS AUCTION SERVICE: TOM BURNS, OLE BILL RICHARDS, BILL RICHARDS III, CAROLE RICHARDS, DICK & EMMA TILTON, ELEANOR HART, SCOTT & VAL CARLSEN, AND ALL THE REST OF OUR GREAT HELP. IF AT ANY TIME WE CAN BE OF SERVICE, FEEL FREE TO CALL US...

OLD BILL RICHARDS
330-757-2001 OR
330-757-4917 (FAX)
TOM BURNS
607-776-7942
BILL RICHARDS III
330-755-2620

FOR AUCTION RESULTS OF ANY BURNS AUCTION

Send \$2.00 and a SASE to
Valerie Carlsen
202 Eleanor Rd.
Horseheads, New York 14845

If you want to receive a flyer for every Burns Auction send \$2.00
(A One Time Charge)

To:
Karen Stare
42 Water Street
Poland, Ohio 44514

and we will get you on our mailing list, also send any address changes to her or to Ole Bill Richards at 44 Water Street, Poland, Ohio 44514 or Fax to 330-757-4917

H.O.A.C.G.A.

CLUB NEWS & GENERAL INFORMATION

The Newsletter is published on the 15th of each month. The Heart of America Carnival Glass Association is a Not-for-Profit organization registered in the State of Missouri.

Members are encouraged to contribute articles for publication in the newsletter and to advertise carnival glass for "sale" or glass "wanted". Articles may be educational in nature or about collecting experiences, or letters of interest to the membership. Other carnival glass organizations may announce their meetings and/or conventions. Auctioneers who are members may announce their future auctions. Members may announce their upcoming carnival glass educational books, price guides, and other pertinent publications; after the initial announcement the information will only appear in the bulletin "Resource Section". All items submitted for publication will be published in the next months bulletin or as soon as possible. The final decision to publish the articles will be made by the Board of Directors. Some articles may be edited prior to publication. Articles of an offensive nature or articles intended to discredit individuals will not be published.

Membership is \$25.00 U.S. & Canada, \$40.00 Foreign per family or individual. All monetary amounts quoted are in U.S. dollars. Membership year starts the month your dues were paid. All checks are to be made payable to H.O.A.C.G.A. and mailed to the Secretary, as listed on the inside front cover. All articles and items for publication in the bulletin are to be sent to the Bulletin Secretary whose name and address appear on the inside front cover.

MEMBERSHIP APPLICATION H.O.A.C.G.A.

New Member Renewal

\$25.00/year U.S. & Canada --- \$40.00/year Foreign

NAME _____

ADDRESS _____

TELEPHONE _____ ZIP CODE (NINE DIGITS)

REFERRED BY _____

Send to: Ed Kramer, 4305 W. 78th Street, Prairie Village, KS 66208

H.O.A.C.G.A. - CLUB INFORMATION

The purpose of the Heart of America Carnival Glass Association is to promote the growth and continuation of the Carnival Glass collecting hobby and to provide support to the many collectors by providing current information about the hobby.

Growth is accomplished by supplying educational information for the collector and soliciting new collectors into the hobby.

With the exception of 1997, when the Convention is to be May 1, 2, 3 and 4, a Convention is held annually in April in conjunction with the annual meeting (Convention date always includes the 4th Friday). Some of the activities provided at the convention are:

- * Members provide Room Displays with glass from their collection.
- * Members are encouraged to bring glass for Sale.
- * Educational Seminars are provided by members.
- * A Major Carnival Glass Auction is provided.
- * The Convention offers members an opportunity to meet new collectors, renew old friendships and enjoy discussing carnival glass with other knowledgeable collectors.
- * A banquet is held with a Carnival Collector as our Speaker.
- * A Hospitality time is provided by the club. This is a time of relaxation and visiting with other members.

It takes the support of all collectors and members to promote the hobby in order that its growth and expansion can continue.

In order to obtain our objective, the members must financially support the organization. The Heart of America Carnival Glass Association receives its financial support through the Annual Membership dues and the sale of the following.

- * **Membership Dues** - \$25.00 per year - U.S. & Canada. \$40.00 per year for Foreign. The Membership Year is from the date of joining to

one year later. Dues are set by the Board of Directors to support the publication of the monthly bulletin, typing, printing and mailing.

- * **Educational Series - Book I** - 148 articles with pictures (black and white) on a variety of Carnival Glass Patterns.

- * **Educational Series - Book II** - 180 articles with pictures (black and white) of Carnival Glass Tumblers

- * **Educational Series - Book III** - 150 articles with pictures (black and white) of Bon Bons, Bowls, Drinking Vessels, Novelties, Rose Bowls, and Table Sets. Also included is a listing of 500 rarities.

- * **Hartung Carnival Glass Pattern Books** - A set of 10 books identifying Carnival Glass Patterns. These books are a must for all Carnival Glass Collectors, especially for the beginner. These are the only complete set of books available that identifies the majority of the carnival glass patterns. Sketches are in black and white.

- * **Pattern Notebook** - A notebook containing sections on Mugs, Table Sets, Rosebowls, Water sets (including painted sets), Plates (small, regular & chop), Compotes (large, regular & small), Punch Sets and Vases. Each section of the notebook identifies each pattern with a **COLOR** picture along with information about the Maker and colors of each different pattern.

- * **Souvenirs** - Periodically H.O.A.C.G.A. makes a souvenir to be sold to members. Souvenirs have been made since 1974, a few of these are presently available. They are the small Good Luck plate in ruby red, the Green Opalescent - Fenton, Cobalt - Millersburg, Marigold - Imperial, and Teal - Dugan Bells. Each year that Souvenirs were made, Whimseys were also made and sold at the convention banquet.

- * **Video Tapes** - Video Tapes of educational programs given during the various conventions are available. A complete listing of the available video tapes are shown on the Order Form, which is part of this section of the Bulletin.

MARCH 1997
REGULAR HOACGA MONTHLY MEETING

The next regular meeting of the Heart of America Carnival Glass Association will be on Sunday, March 23, 1997 at 2:00 P.M. at the Holiday Inn across from the Sports Complex in K.C., MO (I-70 and Blue Ridge Cutoff). We will discuss Chop Plates.

Twenty members including Joe and Shirley Williams from Prairie City, Iowa, attended the February 23, 1997 meeting. After the business part of the meeting and a break for coffee and cookies, president Bob Grissom led a discussion of thirty pieces of carnival glass with cherries and hearts (for February). We had several Hearts and Vines bowls and Three Fruits bowls in varying colors and lots of other patterns represented. Harold Mayes won the door prize, a marigold sauce in Fruits and Flowers.

We look forward to seeing you at the March meeting with your Chop Plates. You have plenty of time to buy one if you don't have one (just kidding). We'd be happy to see you without a Chop Plate.

Ed Kramer, Secretary HOACGA

NOTES FROM THE SECRETARY

- 1.) Please send ads to JACKIE FORTNEY, orders for printed material and souvenirs and memberships (new & renewal) to ED KRAMER. Addresses inside front cover. Any other destination delays processing.
- 2.) **Please do not send cash. Please make all checks payable to HOACGA.**
- 3.) Please allow 3-4 weeks to process orders unless there are special circumstances.
- 4.) Your membership expires with the month shown in the upper right hand corner of your mailing Label, for example 1097 is October 1997, Please renew early. We try to put a "Membership due please renew" label on your last bulletin, If you do not receive a bulletin when you think you should, let me know as soon as possible. All checks are logged in (manually). If an Error is made, it is much easier to correct before months go by. We keep detailed records but occasionally a mistake can be made. I appreciate your Cooperation, We have over 1000 Memberships.

Ed Kramer,

Secretary HOACGA

SHIPPING AND HANDLING (S&H) INFORMATION

The shipping charges to USA members are as indicated for each item. The shipping charges to members who reside outside the USA will be the actual cost. Upon receipt of item(s), the member will be expected to reimburse the club for the actual cost of shipping, as indicated by the postage on the package. At the time of placing your order, please indicate your shipping preference (air or surface). Unless otherwise specified, items will be shipped by surface mail.

ORDER FORM - SOUVENIRS & BOOKS

HOACGA Educational Series Book I \$15.00
 USA S&H for each book \$2.50
 Total \$17.50

HOACGA Educational Series Book II..... \$17.50
 USA S&H for each book \$2.50
 Total \$20.00

HOACGA Educational Series Book III
 (USA S&H included) \$20.00

H.O.A.C.G.A. SOUVENIRS:

1993 Ruby Red 6" "Good Luck" Plate \$37.50
 (20th Anniversary)
 1989 Teal Bell \$35.00
 (Honors Dugan Glass Company)
 1988 Marigold Bell..... \$35.00
 (Honors Imperial Glass Company)
 1987 Cobalt Blue Bell \$35.00
 (Honors Millersburg Glass Company)
 1986 Green Opalescent \$35.00
 (Honors Fenton Glass Company)

Include \$2.50 for USA S&H of each above souvenir.

PLATE HOLDERS - Dozen Clear plastic base, white wire back
 holds plates and bowls \$21.50
 (USA S&H Included)

TOTAL \$ _____
 SEND ORDERS TO:

ED KRAMER Name _____
 4305 W. 78th Street Address _____
 Prairie Village, KS 66208 _____

ORDER FORM - VIDEO TAPES

H.O.A.C.G.A. CONVENTION SEMINAR VIDEO TAPES

_____ "Red Carnival Glass"	\$20.00
(Richard Cinclair, Bob Allaire & Joyce Seale)	
_____ "Shades of Blue" - (Richard Cinclair)	\$20.00
_____ "Poppy & Rose Show Pieces" - (Tom Mordini)	\$20.00
_____ "Fenton Two Flower" - (Bob Stremming)	\$20.00
_____ "Carnival Glass Smalls"	\$20.00
(Eleanor & Jack Hamilton)	
_____ "Small Plates" - (Smokey Cloud)	\$20.00
_____ "Hatpin & Hatpin Holders" - (Clint Fox)	\$20.00
_____ "Northwood Peacock & Urn Ice Cream Sets"	\$20.00
(Harold Cox)	
_____ "Millersburg Big Fish & Trout & Fly"	\$20.00
(Singleton Bailey)	
_____ "Carnival Glass Collecting Experiences"	\$20.00
(Carl & Ferne Schroeder)	
_____ "Heinz 57 Variety Carnival Glass Collection"	\$20.00
(Jerry & Carol Curtis)	
_____ "Little Sauces" - (Garth Irby)	\$20.00
_____ "Miniatures" - (John & Lucile Britt)	\$20.00
_____ "Table Sets" - (Leonard, Kremer & Grissom)	\$20.00
_____ "Plates" - (Ruth Green & Richard Cinclair)	\$20.00
_____ "'94 Britt Award Luncheon" (Floyd & Cecil Whitley)	\$20.00
_____ "Plethora of Patterns" - (Dean & Diane Fry)	\$20.00
_____ "Millersburg" - (Dick & Jennie Hostetler)	\$20.00
_____ "Swung Vases" - (Dave & Joan Doty)	\$20.00
_____ "Holly Pattern" - (John Mikkonen)	\$20.00
_____ "'95 Britt Award Luncheon" - (Carl & Ferne Schroeder)	\$20.00
_____ "'95 HOACGA Banquet" - (Floyd & Cecil Whitley)	\$20.00
_____ "'96 Britt Award Luncheon" - (Chuck & Marge Kremer)	\$20.00
_____ "'96 HOACGA Banquet" - (Carl & Eunice Booker)	\$20.00
_____ "Imperial Glass" - (Norene Duran)	\$20.00
_____ "The Molding Process" - (Howard Seufer of Fenton Glass Co.)	\$20.00

TOTAL \$ _____

USA S&H INCLUDED WITH PRICE OF TAPE

SEND ORDERS TO:

ED KRAMER Name _____
 4305 W. 78th Street Address _____
 Prairie Village, KS 66208 _____

ORDER FORM - BOOKS

HARTUNG CARNIVAL GLASS BOOKS

(Black and white sketches)

_____ Book 1 - \$6.00	_____ Book 6 - \$6.00
_____ Book 2 - \$6.00	_____ Book 7 - \$6.00
_____ Book 3 - \$6.00	_____ Book 8 - \$6.00
_____ Book 4 - \$6.00	_____ Book 9 - \$6.00
_____ Book 5 - \$6.00	_____ Book 10 - \$6.00

_____ Complete Set of 10 Books (#1 thru #10) - \$60.00

(Hartungs "Northwood Pattern Glass" included with a Set)

USA S&H - Include \$1.00 each, for shipping when purchasing books separately.

Maximum of \$6.00 shipping for a set.

H.O.A.C.G.A. PATTERN NOTEBOOK

(COLOR Photos)

_____ Mugs	(1980)	\$7.00
_____ Table Sets (Photos 1 thru 40)	(1981)	\$7.00
_____ Water Sets 1 (Photos 1 thru 60)	(1982)	\$7.00
_____ Water Sets 2 (Photos 61 thru 120)	(1983)	\$7.00
_____ Water Sets 3 (Photos 121 thru 167)	(1984)	\$7.00
_____ Rosebowls 1 (Photos 1 thru 60)	(1985)	\$7.00
_____ Rosebowls 2 (Photos 61 thru 101)	(1986)	\$7.00
_____ Small Plates 1 (Photos 1 thru 48)	(1987)	\$7.00
_____ Small Plates 2 (Photos 49 thru 98)	(1988)	\$7.00
_____ Chop Plates (Photos 1 thru 40)	(1989)	\$7.00
_____ Regular Plates 1 (Photos 1 thru 48)	(1990)	\$7.00
_____ Regular Plates 2 (Photos 49 thru 81)	(1991)	\$7.00
_____ Compotes 1 (Photos 1 thru 57)	(1993)	\$8.00
_____ Compotes 2 (Photos 58 thru 113)	(1994)	\$8.00
_____ Punch Sets, 2nd Edition (Photos 1 thru 36)	(1995)	\$8.00
_____ Vases A - C (Photos 1 thru 57)	(1996)	\$9.00
_____ Complete Pattern Notebook		\$129.00
_____ USA S&H for complete notebook		\$5.00
_____ USA S&H for each selection		\$1.00
(USA Maximum S&H \$5.00)		

SEND ORDERS TO: TOTAL \$ _____

ED KRAMER Name _____
 4305 W. 78th Street Address _____
 Prairie Village, KS 66208 _____

WELCOME NEW MEMBERS

We welcome the following new members:

Thomas Limback	Independence, MO
Melanie Fraser	Hugo, MN
Carl & Jeanne Abner	Rome, GA
Stanley & Roma Dunkley	Jacksonville, FL
Michael & Susan Byrum	Waxhaw, NC
Don & Carolyn Todd	Cleveland, OK
Jon & Janice Mayhan	Cleveland, OK
Earl Sigrist	Springfield, IL
Jo Alice Brendecke	Phoenix, AZ
Donna Martin	Katy, TX
Michael Parsons	Orlando, FL
Cherlyn Angell	Bethel, VT
Ginger Riffel	Omaha, NE
Pat Lundblad	Coon Rapids, MN
Don Hutchason	Whitakers, NC
Jim & Opal Harden	Terrell, TX
Nona Glass Taylor	Houston, TX
David & Toni Morrow	Ft. Madison, IA

We thank those members who have referred new members to us:

Tom Mordini
 Carl Burns
 Chuck Kremer
 John & Lucile Britt

Ed Kramer, Secretary HOACGA

CARNIVAL GLASS FOR SALE

Stephen Sivonda, 375 Congdon St., Middletown, CT 06457

Phone: (860) 346-9356 Items subject to prior sale.

A	EI	Inv. Strawberry 10 3/4" bowl, radium, near-cut	260.00
A	EI	(N) Diamond Points 10" vase, electric	85.00
G	EI	M'burg Hanging Cherries IC bowl, satin	350.00
A	EI	M'burg Little Stars, satin, sm. chip on base 7 3/4 ruf bwl.	72.00
IG	EI	Fenton Zig Zag pitcher, painted flowers	560.00
M	EI	Imperial Tree Bark, amber, unlisted color, get it	85.00
AQ	EI	Sailboats 6" sauce, lt aqua, good detail	90.00
A	EI	S-Repeat creamer whimsy	65.00
G	EI	Rustic 16 1/2H 4 1/4" base vase, emerald green	130.00
SM	EI	Imperial 12" Ripple vase, exc looking	130.00

Omer E. Sweeney, 28 Esmond St, Esmond, RI 02917

Phone: (401) 231-4108

M	EI	474 punch bowl top	70.00
M	EI	Waterlily 9" footed bowl	35.00
M	EI	Fenton Thistle banana bowl	190.00
M	EI	Cherry Chain 6" bowl	30.00
M	EI	Fine Rib 16" vase	25.00
M	EI	Grape and Cable 9" plate	95.00
M	EI	Pony bowl	95.00
B	EI	Fenton Peacock & Grape 9" bowl	135.00

Doug & Nancy Davis, 7050 Carmelita Ave., Atascadero, CA 93422

Phone: (805) 466-3762

P		Thin Rib vase 10 1/2" (N), Nice color	55.00
M		3 Fruits plate, b/w back, multi irid	150.00
M		G/C Cologne Bottle with stopper, a beauty	200.00
A/P		Singing Birds mug (n), very nice	90.00
P		Wild Rose nut bowl, (N) stipple rays interior	90.00
M		G/C (Fen.) fld Orange bowl, Per. Med. int, pinhead/point ..	150.00
P		G/C punch bowl base (N) small size, blue/gold colors, bruise/base	40.00
M		Blackberry Wreath 6" ruffled berry bowl, pretty	50.00
P		G/C Orange bowl, great color (N)	260.00

CARNIVAL GLASS FOR SALE

Ellen Hemm, N. 951 Hwy 27, Conrath, WI 54731
Phone: (715) 532-5816

G	EI	Singing Birds tumbler	65.00
G	EI	Holly Sprig bon bon	65.00
A	EI	Floral & Grape tumbler	35.00
M	EI	Peacock at Fountain tumbler	40.00
M	EI	Fanciful low ruffled bowl	105.00
IG	GI	Crocus enameled tumbler	50.00
M	EI	Phlox enameled tumbler	35.00
AQ	EI	Heavy Grape 10" bowl	55.00
M	EI	Stag & Holly deep fruit bowl	110.00
A	GI	Scroll Embossed 8" bowl	50.00

Craig & Brenda Kuckelburg, 517 North Jay St., Aberdeen, SD 57401
Phone: (605) 226-1660

CLM		Frosted Block plate 8 3/4"	65.00
AQ		Sailboats round sauce	100.00
M		Lotus enameled pitcher, drape int.	125.00
PM		Persian Medallion rosebowl, ginger ale color	50.00
M		Morning Glory vase 5 1/4" flared 4 3/4"	80.00
M		Rex milk pitcher 6 1/2" tall	30.00
M		Stork vase 7 3/8" tall	45.00
A		Fine Cut & Roses rosebowl	125.00
A		Blackberry Wreath sauce ICS	90.00
AMB		Knotted Beads vase CRE, great color	500.00

John & Lucile Britt, 3048 Tamarak Drive, Manhattan, KS 66503
Phone: (913) 539-1933

Celest		Concave Diamonds tumbler	30.00
M		Star Medallion tumbler, reg. size, see tumbler bk pg. 154	35.00
M		Harvest Flower tumbler, shows green in base	85.00
B		Orange Tree Variet tumbler, super	135.00
M		Hobstar Band tumbler	50.00
B		Stork & Rushes, beaded band	65.00
W		Dahlia tumbler	135.00
P		Dahlia tumbler	125.00
M		Beaded Shell tumbler	65.00
M		Tree of Life tumbler, dark color	25.00

CARNIVAL GLASS FOR SALE

Harry Daniels, 1405 Wood Ave., Apt. 197, Roselle, NJ 07203
Phone: (908) 245-3116

A		Lotus & Grape bon bon	85.00
M		Square Open Edge Basket	35.00
M		Big Basketweave handled basket	55.00
B		Waterlily footed sauce	75.00
M		Ripple standard size vase	15.00
M		Pansy Relish super color	40.00
AQ		Blackberry Spray 2 sides up hat	75.00
B		Illusion bon bon, nicks	30.00
*		Ivory Console bowl, flaw	15.00

Ann Silverman, 10 Cannon Forge Dr., Foxboro, MA 02035
Phone: (508) 543-8696, leave message

P		17" Rustic vase 4" dia., gorgeous color	250.00
B		Grape Delight nut bowl	125.00
M		Diamond & Rib vase CR edge 15"	135.00
PO		Stippled Flower bowl, nice example	65.00
A		Tree Trunk vase 8 1/2" N	65.00
A		Thin Rib vase (N) standard	60.00
M		Enameled Crocus vt. tumbler	38.00
LtG		Dragon & Lotus bowl, not iridized	100.00
R		Stretch shallow cupped bowl	250.00
		1965 Woman's Day magazine, shipping included	12.00

William & Charlotte Wesley, 10240 Fairway Dr., Ellicott City, MD 21042
Phone: (410) 461-3713

R	EI	JIP Open Edge basket, AMB in base	425.00
P	EI	10 1/2" Imperial vase 5/4 top EB highlights	175.00
P	EI	PCE Strawberry, slight wear on fruit	100.00
G	EI	3/1 edge Vintage	75.00
G	EI	Ruffled Vintage	70.00
PO	EI	Dogwood Spray dome based	80.00
A	EI	Ruffled Vintage	70.00
M	EI	JIP Open Edge basket, dark	40.00
M	EI	25. VP large 2 row Open Edge	65.00
G	EI	3/1 edge stippled rays bowl	55.00

CARNIVAL GLASS FOR SALE

Richard Jarnig, 3202 FM 50, Brenham, TX 77833
Phone: (409) 836-5545

R	Vintage Fernery, reverse amberina, rarer than red, super	900.00
R	OT mug std, the best	450.00
G	Inv. Thistle Spooner, em. green, nice	325.00
A	Rose Show plate, outrageous irid	850.00
M	Diamond & Daisy Cut vt punch bwl, 1 of 2 known, mint	550.00
SM	Fashion pitcher dark irid, nice	355.00
A	Blackberry Wreath 8" IC satin	175.00
G	Peter Rabbit 8 ruf bowl v nice, epoxy/edge, so	950.00
A	Pony plate silvery irid, neat	130.00
G	G&C footed plate, em. green, v nice	155.00

Lee & Phyllis Bryant, 11645 NW Winchester Rd., Decatur, IN 46733
Phone: (219) 639-3415

W	Hearts & Flowers compote ruffled frosty	200.00
W	Fanciful 9" ruffled plate, multi pickup	125.00
P	Beaded Shell mug, rust, blue, gold irid	70.00
P	Three Fruits 8½" ruffled bowl collar base (N)	100.00
IG	Fenton 3 row open edge bowl 6" square multi	275.00
A	Iris Buttermilk Goblet extra nice	70.00
W	Holly 8" ICS low bowl multi	120.00
A	Daisy & Plume rose bowl, Berry int. 3 feet	125.00
M	Hobnail Swirl rose bowl, DM, radium irid	300.00
M	Fishscale & Beads 7" flat plate	50.00

Arthur Allen Van Curen Jr. "Champ", 3517 W. 47th Court, Gary, IN 46408
Phone: (219) 887-0871

G	EI	(N) Strawberry bowl ruffled	100.00
A	EI	(N) Bushel Basket	100.00
M	EI	Good Luck bowl ruffled	125.00
G	EI	Hearts -n- Vinc bowl CRE	100.00
A	EI	Fruits and Flowers bowl 7" ruffled	140.00
Cob	BEI	Holly bowl 9" 3/1 edge	125.00
G	EI	4 piece Vintage Berry set	100.00
A	EI	Wild Rose, Open Edge candy dish	60.00
A	EI	9" Grape and Cable bowl ruffled edge (N)	100.00
A	EI	Grape & Cable spatula footed bowl	65.00

CARNIVAL GLASS FOR SALE

Maurice "Moe" Myers, 3730 NW 52nd Street, Ft. Lauderdale, FL 33309
Phone: (954) 731-3191

M	Daisy Cut Bell, a beauty	425.00
A	Acorn Burrs water set	800.00
B	Grand Thistle pitcher	800.00
M	Forget-Me-Not enameled tank. & tum., dark and beaut	255.00
A	Grape & Cable cracker jar	350.00
G	Raspberry milk pitcher	250.00
P	Peacock at Fountain spooner, super color	125.00
G	Springtime sugar, no cover, lovely one	200.00
G	Memphis punch set, great color & irid	1,800.00
IG	2 Row Open Edge ICS basket	350.00

Pamela McLean, 3730 NW 52nd Street, Ft. Lauderdale, FL 33309
Phone: (954) 731-3191

G	Hanging Cherries creamer	250.00
G	Three Fruits plate, ex. color	250.00
B	Cathedral or Curved, star compote	75.00
M	Fishermans mug, a beauty	155.00
B	Ribbon Tie 3/1 plate, colorful	145.00
M	Soda Gold water pitcher, perfect	130.00
LAV	Pansy creamer, top notch irid	65.00
W	Leaf Chain ICS 9" bowl	95.00
M	Waterlily covered butter, perfect	95.00
G	G&C Orange bowl w/Per Med int., sup color, chip so	250.00

Evan Walker, 33 Ridge Rd., Malvern, PA 19355
Phone: (610) 647-4290 If item is sold, your call will not be returned.

IB	EI	(N) Hearts & Flowers ruffled bowl, pinks and blues	450.00
W	EI	(N) Daisy & Drape vase, superb and frosty	400.00
M	EI	M'burg Swirl Hobnail spittoon	600.00
EG	EI	Rustic 18" Funeral vase, 7" top, super	1,800.00
R	EI	Fenton Grape & Cable 6½-7" IC bowl, reds and blues	1,200.00
EB	EI	(N) Poinsettia & Lattice footed bowl, beautiful	850.00
EP	EI	Scroll Embossed plate, nice and flat	425.00
EB	EI	Dandelion mug, great color	650.00
A	EI	(N) Three Fruits plate/bw back, super duper color	300.00
A	EI	M'burg Blackberry Wreath 7" IC bwl, radium center, rare	225.00

CARNIVAL GLASS FOR SALE

John & Karen Schlumbohm, 2673 235th Ave., Decorah, IA 52101
Phone: (319) 382-6485 Send SASE for list of glass for sale

P	Four Flowers vt 10½" chop plate, super	1,500.00
G	Grape & Cable 9" ftd plate meander ext., super	300.00
G	Vintage 8" IC bowl, great dark multi color	125.00
B	Open/Lustre Rose Fernery pretty satin irid.	135.00
B	Peacock Tail hat pink, aqua irid	50.00
PM	Three Fruits (N) 9" plate plain ext, pretty multi	275.00
A	Three Fruits (N) 9" plate plain ext, pretty	275.00
M	Wishbone (N) 8½" 8 ruff footed bowl pretty	100.00
PO	#270 Westmoreland compote / saucer pretty	70.00
G	April Showers 10" vase great even irid	85.00

Yvan Beaudry, 109 5th Ave., Boisbriand, QC J7G1Y8
Phone: (514) 437-4585 Fax: (514) 364-7838

M	EI	Octagon decanter complete	60.00
M	EI	Octagon decanter, no stopper chip	10.00
M	EI	Tree Trunk 12", a beaut mid size	525.00
G	EI	Boutonniere compote radium, plus	200.00
M	EI	Inverted Strawberry tumbler	155.00
M	EI	Inverted Strawberry sugar and cover	350.00
M	EI	Inverted Strawberry spooner base chip	40.00
M	EI	Inverted Thistle creamer	375.00
M	EI	Double Star tumbler	165.00
EB	EI	Coin Spot compote P	90.00

Connie O'Connor, 115 N. Wakefield St., Arlington, VA 22203
Phone: (703) 358-5045, weekdays. (703) 524-0752 eve/weekends

A	N. Leaf & Beads rose bowl, heel chip	100.00
B	F. Hearts & Vine CRE bowl, G&R irid	170.00
A	F. Cherry Circles rnd bon bon	150.00
M	F. Leaf Chain ruffled bowl, electric	50.00
M	F. Scotch Thistle compote	40.00
A	N. Wishbone footed bowl	120.00
B	F. Little Flowers rnd sauce	60.00
P	D. Petal & Fan sm sauce, electric	160.00
M	F. Little Fishes sm berry, point off	30.00
B	F. Persian Medallion plate	225.00

CARNIVAL GLASS FOR SALE

Gladys Hutchison, Rt. 1 Box 259A, Stockton, MO 65785
Phone: (417) 276-4119

M	Heavy Grape 12" bowl	160.00
G	Imperial Grape punch base	50.00
M	Windflower 9" plate sm wear	110.00
AO	Three Fruits medallion, stippled, footed 9" bowl	600.00
PO	Double Stem Rose 9" bowl, footed	175.00
B	Orange Tree creamer, some wear	45.00
M	Tree Bark pitcher, dark, 4 tumblers	90.00
M	Waterlily dark, 10" bowl, nice	75.00
G	Inverted Feather cracker jar and lid	200.00
HA	Cosmos and Cane 4 tumblers	ea. 55.00

Virgil St. John, Box 400, LeGrand, IA 50142
Phone: (515) 479-2952

P	Acorn Burr sugar lid	85.00
B	Apple Blossom Twigs plate	450.00
AO	Beaded Cable rose bowl	475.00
W	Corn Vase (N)	450.00
IG	Corn Vase (N)	550.00
AO	Daisy and Drape vase	695.00
P	Grape Arbor tumbler	95.00
M	Kings Crown wine	45.00
M	Little Fishes 10" footed bowl	350.00
G	Marilyn (Millersburg) tumbler	350.00

Stephen P. Mailloux, 566 Elm Street, Northhampton, MA 01060-2832
Phone: (413) 584-4864

B	Blueberry tumbler	78.00
M	Embossed Scroll 9" bowl file exterior	45.00
G	Peacock Tail sm. Berry bowl (2)	ea. 50.00
PO	Fishscale and Beads 7" bowl	75.00
A	Wreath of Roses varient compote	45.00
M	Wreath of Roses varient compote	38.00
B	Peacock at Urn compote	100.00
M	Peacock at Urn compote	55.00
B	Miniature Blackberry compote	150.00
PO	Apple Blossom Twig bowl 3/1 edge	150.00

CARNIVAL GLASS FOR SALE

Richard A Commini, 4 Bayberry Drive, Bordentown, NJ 08505
Phone: (609) 298-6979

A	EI	Northwood Strawberry plate 9"	150.00
M	EI	M'burg Hanging Cherries creamer	85.00
M	EI	Holly Ruffles bowl 9"	55.00
B	EI	Thistle Ruffle bowl 9"	125.00
G	EI	M'burg Holly swirl bowl 10" rad.	130.00
G	EI	Northwood Stm. Rainbow compote	90.00
P	EI	(N) Star of David & Bows. ruf bowl.....	85.00
A	EI	M'burg Hobnail Swirl rose bowl, flake	225.00
G	EI	(N) Wide Rib 10½" vases (2), nice	ea. 65.00
PRL	EI	Spooner Grape & Gothic Arches	65.00

Steven & Pat Beranek, 305 Pleasant, Lost Nation, IA 52254
Phone: (319) 678-2425 after 5 PM

M		Inverted Coin Dot water pitcher	275.00
M		Waterlily 10" FTD bowl	80.00
A		April Showers 11" vase	80.00
B		Little Flowers 6" ruffled bowl	75.00
M		Star & File Sq bowl	45.00
M		Crab Claw tumbler	30.00
M		Blackberry Wreath 8" ruffled bowl	75.00
A		Whirling Leaves ruffled bowl, small chip	105.00
IG		Drapery 8" vase, chips on toes	125.00
LtA		8 sided bushel basket	125.00

Gary Young, 4965 Crofton Drive, Rockford, IL 61114
Phone: (815) 637-2770

B	EI	Butterfly and Berry butter base	50.00
M	EI	Dragon & Lotus bowl, lots of pinks and blues	60.00
P	GI	Acorn Burrs spooner some wear on high pts, silvery so	110.00
M	EI	Holly bowl, multi irid	50.00
B	EI	Orange Tree punch cup	37.00
M	EI	Thistle bowl	45.00
M	EI	Birds and Cherries bon bon	80.00
G	EI	Acorn Burrs punch cup	50.00
P	EI	Grape & Cable sugar lid	50.00
G	GI	Fine Cut and Roses candy dish, mint feet	80.00

CARNIVAL GLASS FOR SALE

Alan & Virginia Hodges, RR1 Box 253, Lyndonville, VT 05851
Phone: (802) 626-5216

M	EI	Horse Medallion rose bowl	150.00
P	EI	Colonial Lady vase	850.00
B	EI	Iridized stretch 12½" centerpiece bowl w/gold border	75.00
B	EI	Iridized stretch 10" bowl	38.00
M	EI	Heavy Grape punch bowl and base, nice dark M	375.00
B	EI	15 3/4" Rustic crimped top vase	140.00
M	EI	11½" Beaded Bullseye vase	55.00
G	EI	11 3/4" Ripple vase	125.00
G	EI	Beaded Cable ruffled candy dish 7½" across top	90.00
M	EI	5 different lamp shades, different sizes	call

Richard Cinclair, 3605 South Echo Trail, Plano, TX 75023
Phone: (972) 596-0014 RJC4470@DCCCD.EDU

G	EI	Old Rose Distilling stippled plate	600.00
M	EI	Fruits & Flowers stippled 7" bowl	225.00
M	EI	Peacocks plate stippled, pinks	500.00
M	EI	Peacock at Fountain punch cups	ea. 45.00
A	EI	Hearts & Flowers PCE bowl	850.00
A	EI	Strawberry stippled ruffled bowl	495.00
IB	EI	Daisy & Plume candy	750.00
*	EI	Helios Corn bottle	200.00
B	EI	Peacocks bowl, PCE, super	600.00
PO	EI	Round Up low ruffled bowl	275.00

Kandis & Bob Richmond, 803 S. Hancock St., Ottumwa, IA 52501
Phone: (515) 684-6765

A		7" Smooth Rays low ruffled bowl	40.00
PO		6½" Four Flowers plate	95.00
AQ		Blackberry Spray square hat shape	50.00
A		Leaf Swirl compote, light	40.00
VAS		Fenton's 2 row Open Edge basket	80.00
M		6½" Persian Medallion plate	40.00
M		Blackberry 2 row Open Edge basket, 2 sides up	30.00
M		Bushel Basket (N)	100.00
M		Blackberry Spray JIP hat	35.00
A		Tri-Corner hat, CRE	45.00

CARNIVAL GLASS FOR SALE

Helen & Greg Ferguson, 3146 Acushnet Ave., New Bedford, MA 02745
Phone: (508) 995-6936 or Email us at Fergy1979@aol

PO	EI	Caroline bowl, good and dark	125.00
P	EI	Grape & Cable punch cups, set of 4	88.00
PO	EI	Fishscale & Bead low tight crimped edge	90.00
W	EI	Persian Garden IC 5½"	80.00
P	EI	Heavy Iris tankard, ½" crack at handle	650.00
*	EI	Singing Birds berry bowls, 1 in P and 1 in G	ea. 30.00
G	EI	Beaded Cable rose bowl, iridized inside only	160.00
PO	EI	Ski Star 8" handgrip plate, stunning example	110.00
CLM	EI	Frost Block plate 9" USA	110.00
M	EI	Octagon tumbler, Mfg ground base	30.00

Carl & Robin Dodd, 169 Leaning Pine Lane, Moncks Corner, SC 29461
Phone: (803) 899-7928

*	EI	LG/VAS Wide Panel covered candy dish, mint w/excel irid	50.00
A	EI	Strawberry ruff bowl excel MC irid	110.00
G	EI	Mayan ICS bowl mind and outstanding radium irid	140.00
P	EI	Diamond Lace 9" ruff bowl, super irid	90.00
LG	EI	Tree Trunk 7" vase mint and nice	65.00
A	EI	Sunflower ftd ruff bowl, mint w/pretty MC irid	120.00
AMB	EI	Heavy Grape master berry bowl, scarce w/radium irid	160.00
M	EI	Heavy Grape chop plate, excel MC irid	170.00
SM	EI	Morning Glory 7½" vase, mint & outstanding	110.00
M	EI	Wild Rose nut bowl, dark & pretty	45.00

Carl O. Burns, 60 Rumford Center Rd., Andover, ME 04216
Phone: (207) 392-3044

B	EI	Rose Show variant 9" plate, cobalt, super	3,000.00
W	EI	Wreathed Cherry covered sugar, pinhead on finial	125.00
W	EI	Wreathed Cherry spooner, a beauty	100.00
PO	EI	Stippled Petals 9" dome footed banana bowl	100.00
M	EI	Bushel Basket (N), pastel & pretty	100.00
A	EI	Maple Leaf tumbler	40.00
M	EI	Holly 8½" bowl, ICS	55.00
B	EI	Autumn Acorn 8" bowl, IC, great irid	80.00
M	EI	Pansy 9" ruffled bowl, nice one	40.00
CLM	EI	Optic & Buttons 7½" salad plate, super	35.00

CARNIVAL GLASS FOR SALE

Gerald M Hess, 220 N. First St., Argos, IN 46501-1010
Phone: (219) 892-6193

M	EI	Arched Panels tumbler	40.00
M	EI	Late enameled Waterlily tumbler	20.00
M	EI	Prism Band w/enameled Iris tumbler	25.00
B	EI	Peacock at the Fountain varient tumbler, excellent	60.00
M	EI	Grapevine Lattice tumbler	25.00
M	EI	Star & File 6-ruffle, large compote, pastel M	30.00
M	EI	Double Stem rose bowl, dome footed	47.50
G	EI	Open Rose 8-ruffle, 8" stippled bowl, small flake off rim ..	30.00
G	EI	Vintage 6½" bowl	35.00
G	EI	Strawberry bon bon	55.00

Rob Cooper, 31 Oak View Dr., Newark, DE 19702
Phone: (302) 455-9225 rcooper@dpnet.net

M	EI	Singing Birds 7 pc. berry set, super & very rare	550.00
AMB	EI	Orange Tree ruffled bowl, scarce	250.00
M	EI	Peacock at Urn master IC bowl	375.00
PO	EI	Dragon & Lotus 3/1 low ruffled bowl	275.00
M	EI	Birds & Cherries bon bon, dark & nice	125.00
M	EI	Morning Glory 5" vase, a beauty	40.00
M	EI	Fine Cut & Roses candy dish, w/fancy interior	95.00
B	EI	Dragon & Lotus ICS bowl, electric hilites	135.00
M	EI	Wishbone footed ruffled bowl	125.00
PO	EI	Holly & Berry ruffled bowl	50.00

Douglas Snow, 2412 Ashford Blvd., Flushing, MI 48433
Phone: (810) 732-8197

M		Horse Heads 7" ruffled bowl	60.00
G		Stippled rays bon bon	40.00
M		Holly & Panel tum. deep M, almost R, 25.00 ea. or 6	110.00
A		Footed Shell	30.00
M		Grape & Cable 11" footed fruit bowl NW	110.00
B		Ribbed Holly small compote	75.00
M		Pony bowl	70.00
G		Scroll embossed compote	40.00
B		Pond Lily bon bon	55.00
A		Lustre Flute hat	45.00

CARNIVAL GLASS FOR SALE

Donald L. Harris, 527 Lavina Drive, Mechanicsburg, PA 17055
 Phone: (717) 790-0412 Send .55 stamp for large list of For Sale glass

M	EI	Orange Tree punch base	89.00
A	EI	Grape Wreath multi-star vt 9" bowl, M'burg	125.00
A	EI	Autumn Acorn 9" ICS bowl	75.00
A	EI	Heart Vine bowl, 3/1 edge	85.00
A	EI	Ten Mums 10" bowl, 3/1 edge	285.00
M	EI	Trout & Fly 9" ruffled bowl, M'burg	395.00
AQ	EI	Fine Rib 8½" vase	125.00
B	EI	Beaded Cable footed rose bowl	175.00
B	EI	Butterfly & Berry sugar with lid	135.00
B	EI	Fentonia tumblers (4)	ea. 52.00

Marlin L. Blosser, 4705B Charles Road, Mechanicsburg, PA 17055
 Phone: (717) 975-2920

M	EI	Open Rose individual salad bowl	15.00
M	EI	Peacock at Fountain small berry (2)	ea. 25.00
M	EI	Persian Garden 6" plate	85.00
M	EI	Lustre Rose 7 pc. water set	175.00
PO	EI	Raindrops 9" ruffled bowl	85.00
P	EI	Corinth 10½" vase	35.00
M	EI	Raspberry tumblers (2)	ea. 40.00
P	EI	G&C 7 pc. berry set with thumbprints (N)	225.00
P	EI	Diamond Lace 5 pc. water set	425.00
SM	EI	Smooth Rays 6" flat plate, etched back	22.00

Ted L. Sheibley, 53 Meadow Brook Court, New Cumberland, PA 17070
 Phone: (717) 770-0616 Layaways available

B	EI	April Showers squat vase, Peacock Tail	85.00
B	EI	Bushel Basket, round (N)	120.00
M	EI	Strawberry stippled PCE bowl, rib ext.	175.00
R	EI	Red Panel shade, Hartung bk 9, pg 40	100.00
B	EI	Lattice & Grape tumblers (2)	ea. 45.00
B	EI	Orange Tree butter with lid, base chip	125.00
B	EI	Persian Medallion master berry bowl	125.00
B	EI	Persian Medallion compote, large	125.00
BO	EI	Two Seventy compote, blue opaque	65.00
CLR	EI	Cherry & Cable 7 pc. berry set	100.00

CARNIVAL GLASS FOR SALE

Pat Housewright, 225 Rowland, Stephenville, TX 76401
 Phone: (817) 968-2997

B	EI	Bushel Basket	165.00
B	EI	Blackberry Block tumbler	70.00
B	EI	Beaded Cable rose bowl	225.00
M	EI	Orange Tree Loving Cup	250.00
M	EI	Bushel Basket, 8 sided	150.00
M	EI	Hearts & Flowers compote	300.00
M	EI	Beaded Cable rose bowl	130.00
M	EI	Rising Sun tumbler	115.00
G	EI	Greek Key tumbler	175.00
A	EI	Grape & Cable Sweetmeat	250.00

Jeanne Asadourian, 2471 W. Sample, Fresno, CA 93711
 Phone: (209) 435-3313

P	EI	Embroidered Mums ruff. bowl, super color & irid.	445.00
A	EI	Peacock & Urn ruff. bowl, bearded berry ext., gorgeous ..	255.00
G	EI	Tree Trunk vase, 8½", excellent color & irid.	115.00
M	EI	Panther footed sauce bowl w/Butterfly & Berry ext, dark ..	60.00
PO	EI	Ski Star sauce bowl, very pretty	50.00
A	EI	Maple Leaf small compote, w/Peacock Tail interior	38.00
A	EI	Grape Delight rose bowl, perfect feet	95.00
B	EI	Persian Medallion ruff. sauce, satiny & lovely	70.00
B	EI	Beaded handbag, gorgeous, mint & cobalt, have 18	call
CobB	EI	Poppy Show vase, 12½" showstopper, Fenton	90.00

Dick Wetherbee, 875 Stafford St., Rochdale, MA 01542
 Phone: (508) 892-4420

M	EI	Peacock & Dahlia 7" fluted bowl, beautiful deep color	75.00
P	EI	Four Flowers 10" fluted bowl/plain back, a super piece	275.00
PO	EI	Interior Swirl 6" pinched in vase, beautiful color & opal ..	135.00
M	EI	Imperial Grape 9" flat plate, great color	115.00
W	EI	Grapevine Lattice 7" low ruffled plate, nice frosty one	135.00
B	EI	Blackberry Spray 6" fluted hat, 2 sprigs, outstanding	85.00
M	EI	Singing Birds mug, beautiful dark color	85.00
P	EI	Bellflower 6 3/4" low ruffled dish or plate, beautiful	150.00
AQ	EI	Butterfly pintrays 4"w x 3"h, cute, (4) 32.00 ea. or all	110.00
M	EI	Floral & Grape tumblers, (4) 22.00 ea. or all	75.00

CARNIVAL GLASS FOR SALE

Arlene & Joseph Johannets, 31 Sycamore Drive, Beacon, NY 12508
Phone: (914) 831-6825

PO	EI	Honeycomb & Clover crimped edge plate 6½"	65.00
M	EI	Blackberry Wreath 7" IC bowl, nice one	60.00
M	GI	Hanging Cherries 7" IC bowl	65.00
M	EI	Cobblestone ruffled bowl, super & scarce	85.00
P	EI	Fine Rib vase 10", scarce color for these	95.00
P	EI	Scroll Embossed compote, electric	125.00
A	EI	Feather Stitch ruffled bowl, scarce & pretty	225.00
B	EI	Three Fruits stippled spatula footed bowl, electric	395.00
W	EI	Dugan Dahlia pitcher, super frosty color	850.00

Casey Rich, 1113 North High Street, Franklin, VA 23851
Phone: (757) 562-3033

AMB	EI	Lustre Rose large berry bowl	40.00
B	EI	Peacock Tail compote, electric	55.00
B	EI	Peacock at Fountain tumbler	60.00
G	EI	Vintage 3/1 8½" bowl	65.00
G	EI	Peacock & Grapes bowl, buffed chip	65.00
DM	EI	Imperial Flute Toothpick, minor nicks	35.00
PO	EI	Coin Spot compote, superb	75.00
PO	EI	Holly & Berry 7 3/4" bowl	65.00
G	EI	Tiger Lily tumbler, Olive?	45.00

Dave Ackerman, 4677 Kennebec Drive, Cass City, MI 48726
Phone: (517) 872-2023

PRL		Grape & Gothic Arches 7 pc. berry set, 99% gold trim	500.00
M		Golden Harvest decanter with stopper	130.00
M		Fisherman's mug	225.00
LGO		Dragon & Lotus spat ftd bowl	500.00
P		Dandelion mug	300.00
M		Daisy cut bell	500.00
M		Corn bottle	400.00
A		Butterfly & Berry tumbler, scarce color	75.00
M		Apple & Pear 9 3/4" thick glass bowl	75.00
P		Acorn Burrs 7 pc. berry set	500.00

CARNIVAL GLASS FOR SALE

Mr. & Mrs. Charles Propst, 1005 Park Lane, Osceola, IA 50213
Phone: (515) 342-2697

HOACGA pattern notebook. From the first photos of the original punch sets, thru the compotes 2 (photos 58 thru 113) 1994. Also includes three years of photo color rare glass by Don Moore from ICGA (1985 thru 1988)
Shipping included 80.00

John L. Stafford Sr., W6485 Oak St., Box 14, Dalton, WI 53926
Phone: (414) 394-3305 after 4 PM

W	EI	Fine Cut & Roses candy dish, fancy int.	110.00
M	EI	Mikado large compote	165.00
		OR both (plus shipping) for	235.00

Rick McDaniel, 3420 Morningstar Lane, Dallas, TX 75234
Phone: (972) 243-4574 (fax also)(L'allure Photographic) after 7 PM CST

G	EI	Ribbon Tie 8½" ICS bowl	100.00
B	EI	Leaf Chain 9" ruf bowl	100.00
G	EI	(N) Grape Leaves 9" ruf bowl	125.00
A	EI	Fruit & Flowers bon bon, lav tint	120.00
M	EI	Butterfly & Berry master berry	90.00
M	EI	Butterfly & Berry 5" berry	30.00
M	EI	G & C Banana boat	175.00
M	EI	Octagon water goblet	30.00
M	EI	Daisy & Plume stemmed rose bowl	60.00
M	EI	Orange Tree tumbler	40.00

Greg Dilian, 450 Shore Rd., Long Beach, NY 11561
Phone: (516) 432-1164

M	EI	Imperial Grape cup and saucer, nice set	45.00
A	EI	Westmoreland Prisms compote, radium	80.00
PO	EI	Dugan Wide Rib spittoon shaped vase, tough	125.00
G	EI	Imperial Heavy Grape punch cup	50.00
M	EI	Stork ABC child's plate, good detail	60.00
B	EI	Iris ruffled stemmed compote, pretty	130.00
*	EI	Dragon's Tongue lamp shade, DM over moonstone	120.00
M	EI	Crackle 12" chop plate, very flat and dark	45.00
M	EI	Northern Star card tray	45.00
M	EI	Waterlily 9" ICS footed bowl, pretty	85.00

CARNIVAL GLASS FOR SALE

Dick Hatscher, 142 Walnut Hill Rd., Bethel, CT
Phone: (203) 743-1468

DM EI Christmas compote3,300.00

Sam Allen, 30 Delrey Ave., Balt., MD 21228
Phone: (410) 747-0411

B EI Butterfly & Berry vase, 7 3/4" tall, crimped, great detail ..125.00
A EI Memphis punch cups, very niceea. 25.00
G EI G&C bon bon, beautiful color, fac. flaw on handle, so 60.00
B EI Acorn bowl, very nice, great price 45.00
A EI Northwood Rosette bowl, footed, like brand new 40.00
M EI Butterfly bon bon, dark 45.00
M EI Cosmos var. bowl, IC..... 30.00
G EI 8" Thin Rib vase, Mari overlay 45.00

Gerald L. Thomas, 44 E. Highland Ave., Atlantic Highlands, NJ 07716
Phone: (908) 872-8051

M AI G&C Hat made from tumbler, minor roughness on top rim 35.00
B EI Orange tree punch cups, (2) small chips on base of cups ea. 8.00

Robert & Aggie Natali, 5514 E. National, Fresno, CA 93727
Phone: (209) 291-3296

VAS EI Persian Medallion 6" plate, perfect680.00
P EI Basket Flower hatpin 90.00
M EI Hearts & Flowers 9" plate, absolutely perfect 1,600.00
A EI Jockey Club handgrip plate, base chips650.00
LtM EI M'burg Strawberry 7" bowl 175.00
M EI Waterlily & Cattails 5 1/2" plate, edge turn up 20.00
R EI Candlestick Royal Lustre, pg 20/HOACGA Aug 1996 150.00
M EI (N) G&C Centerpiece bowl points str. up 125.00

Debbie & Mike Heinl, 240 Mize Rd. North, Cullman, AL 35055
Phone: (205) 739-0281 Postage & insurance extra

A Northwood Town Pump, small no harm flake on marie.....920.00

CARNIVAL GLASS FOR SALE

Pat Call, 34 Lovell Road, Stratham, NH 03885
Phone: (603) 778-0660 SASE for list

EB Peacock at Fountain tumbler, brilliant 75.00
M/VAS Leaf Swirl compote, good irid 75.00
W Apple Tree water pitcher, good irid.....375.00
G Fine Rib vase, 10" 165.00
W Persian Gardens 11" ICS bowl, exc 310.00
CLM Vintage Twig hndl server, flat, elect 35.00
P Open Rose 7 pc. berry set 275.00
M Stork and Rushes mug, exc irid 35.00
AO Drapery rose bowl, dark butterscotch 345.00
AMB Imperial Grape ruffled sauce, exc irid 45.00

Steve & Phyllis Long, 2635 E. Edison Ave., Sunnyside, WA 98944
Phone: (509) 837-3747

BA Thunderbird 12 ruffle bowl, super525.00
BA Kingfisher vt 12 ruffle bowl, super, small rim chip275.00
W Nippon PCE bowl, very pretty 225.00
P Acorn Burrs 5 pc. water set, very nice 750.00
P Hearts & Flowers ruffle bowl.....485.00
P (N) Peacock at Urn small IC, nice 100.00
AQ Grape & Cable 7" ruffle bowl..... 75.00
M Small Maggie 8 ruffle bowl..... 85.00
M Peacock at the Fountain 4 piece table set, nice300.00
W Captive Rose compote 100.00

Travis Reyan, Rd. 2, Box 407, Everett, PA 15537
Phone: (814) 652-6649

M M'burg Vintage bowl, hobnail ext, base chips300.00
AQ Double Stem rose bowl.....400.00
G Peacock at Fountain tumbler, base chip 35.00
M M'burg Peacock proof, 5" berry bowl 240.00
B Diamonds Point vase 90.00
A Beads & Flower 7" plate 60.00
B Open Edge basket, 4 sided 60.00
W Garden Path large ruffled bowl, point broken off 35.00

CARNIVAL GLASS FOR SALE

Tom Bagot, 5 Tenth St., Barnegat, NJ 08005
Phone: (609) 698-2279

A	Peacock at Fountain spooner (N) mark on eye, vg	125.00
M	Grape & Cable hatpin holder (N), vg	275.00
A	Grape & Cable plate (N), ex	250.00
A	Prizm bon bon, WM, rare, ex	125.00
B	Beaded Cable rose bowl (N) electric, ex	325.00
B	Open Edge bowl (F) powder blue, ex	125.00
B	Loving Cup (F), ex	275.00
G	Beaded Cable rose bowl, rays int. (N), ex	125.00
G	Daisy & Plume rose bowl fld., rays int., ex	125.00
M	Star & File plate 6" (IMP) rare, ex	175.00

CARNIVAL GLASS WANTED

Doug & Nancy Davis, 7050 Carmelita Ave., Atascadero, CA 93422
Phone: (805) 466-3762

A	Grape & Cable powder jar lid
A/P	Grape & Cable cologne bottle stopper

Craig & Brenda Kuckelburg, 517 North Jay St., Aberdeen, SD 57401
Phone: (605) 226-1660

	Stippled Rays stemmed creamers - AMB,P,R,SM,VAS,CLM
P,CLM	Stippled Rays stemmed sugar
DM	Wreathed Cherry sugar lid

Ann Silverman, 10 Cannon Forge Dr., Foxboro, MA 02035
Phone: (508) 543-8696, leave message

M	Wreath of Roses base, only, for punch bowl
M	474 punch cups

Maurice "Moe" Myers, 3730 NW 52nd Street, Ft. Lauderdale, FL 33309
Phone: (954) 731-3191

T	Base to Waffle Block punch
G	Cover to Springtime sugar, or will sell bottom
M	Bottom to Springtime sugar, or will sell top

John & Karen Schlumbohm, 2673 235th Ave., Decorah, IA 52101
Phone: (319) 382-6485 Send SASE for list of glass for sale

B	Vintage small epergne base
W	Persian Garden fruit bowl only

Yvan Beaudry, 109 5th Ave., Boisbriand, QC J7G1Y8
Phone: (514) 437-4585 Fax: (514) 364-7838

B	Orange Tree punch bowl base only
B	Tree Trunk Squatty short vases
SM	Fashion punch B base

CARNIVAL GLASS WANTED

Robert E. Krause, 1045 East Hawthorne Ave., St. Paul, MN 55106
Phone: (612) 771-4037

PO Base to Fishnet Epergne
M Twins small Berry bowls 5-6 inches
H Stopper to Imp Grape Decanter Helios
W Base to Orange Tree punch bowl
Any Long Hobstar or Hobstar & Arches fruit bowl & base

Gladys Hutchison, Rt. 1 Box 259A, Stockton, MO 65785
Phone: (417) 276-4119

P Heavy Grape chop plate

Gerald L. Thomas, 44 E. Highland Ave., Atlantic Highlands, NJ 07716
Phone: (908) 872-8051

M EI Acorn Burr punch cups, dark
M EI Millersburg Hanging Cherry covered sugar
M EI Millersburg Hanging Cherry sugar lid
CelB EI Concave Diamonds pitcher with lid

Gary Young, 4965 Crofton Drive, Rockford, IL 61114
Phone: (815) 637-2770

B Peacock at the Fountain butter, creamer, punch base and cups
P Peacock at the Fountain butter lid
M Peacock at the Fountain butter bottom
M Orange Tree sugar bottom
A/P Orange Tree breakfast sugar
M Butterfly and Berry sugar bottom
B Butterfly and Berry butter lid
M Acorn Burrs sugar bottom
B Wreath of Roses punch top with Vintage interior
Any Wreath of Roses punch cups with Persian Medallion interior

Jeannie Dickens, 205 Tobby Hollow Ln., Knoxville, TN 37931
Phone: (423) 945-1264

M Tiger Lily tumblers, need 4

CARNIVAL GLASS WANTED

Alan & Virginia Hodges, RR1 Box 253, Lyndonville, VT 05851
Phone: (802) 626-5216

IG Peacock at Fountain punch bowl
P Many Fruits punch bowl base
M Imperial Grape punch bowl base
M Large Fashion punch bowl

Carl & Robin Dodd, 169 Leaning Pine Lane, Moncks Corner, SC 29461
Phone: (803) 899-7928

P Wreath of Roses punch top, super
CLM Imperial Flute sugar
P G&C small punch top
M G&C banquet punch top
SM 474 punch top
P 474 punch top

Robert & Aggie Natali, 5514 E. National, Fresno, CA 93727
Phone: (209) 291-3296

M Springtime sugar w/lid
P Dahlia butter dish w/lid
P Dahlia sugar w/lid

Casey Rich, 1113 North High Street, Franklin, VA 23851
Phone: (757) 562-3033

Helios Stopper for Imperial Grape Whiskey Decanter
B EI 6 Butterfly & Fern tumblers, matching irid.

Rob Cooper, 31 Oak View Dr., Newark, DE 19702
Phone: (302) 455-9225 rcooper@dpnet.net

Any Persian Medallion small round sauce bowls
P Grape & Cable Humidor bottom
P Persian Gardens ruffled fruit bowl & base
B Birds & Cherries ICS bowl

CARNIVAL GLASS WANTED

Donald L. Harris, 527 Lavina Drive, Mechanicsburg, PA 17055
Phone: (717) 790-0412 or will sell any of the below parts

IB Wishbone epergne base
M Orange Tree punch bowl
M Wreathed Cherry butter bottom
P Vintage powder jar lid
B Orange Tree punch base, also need W
Any Ragged Robin bowls
P Dahlia butter lid
P Grape & Cable butter bottom
Any Grape & Cable powder jar lid
P Grape & Cable master punch bowl top

Marlin L. Blosser, 4705B Charles Road, Mechanicsburg, PA 17055
Phone: (717) 975-2920

G Flute punch bowl top
G Hobstar sugar lid
M Long Hobstar punch base
G Shell & Jewel lids, need 2
M Diamond Point Columns butter lid
Any Peacock at Fountain punch cups
M 474 punch bowl top
M Grape & Cable cracker jar bottom
M Grape & Cable powder jar lid
G Little Stars bowl, round or 3/1

Ted L. Sheibley, 53 Meadow Brook Court, New Cumberland, PA 17070
Phone: (717) 770-0616 or will sell any of the below parts

A Orange Peel punch bowl top
B Butterfly & Berry sugar bottom
B Hen on Nest with Chicks top
Any Grape & Cable powder jar lids - need M,HOR,G,P
G Acorn Burr punch bowl top
G Hanging Cherries powder jar bottom
Any Grape & Cable covered compote
M Broken Arches punch base
M Grape & Cable humidor lid, plain or stippled
M Grape & Cable sugar bottom

CARNIVAL GLASS WANTED

Jeanne Asadourian, 2471 W. Sample, Fresno, CA 93711
Phone: (209) 435-3313

Black and Celeste Blue New Poppy Show vase by Fenton

John L. Stafford Sr., W6485 Oak St., Box 14, Dalton, WI 53926
Phone: (414) 394-3305 after 4 PM

DM EI Paneled Dandelion tankard

Donald L. Royer, 602 Cedar Dr., Willard, OH 44890
Phone: (419) 935-4013

G Acorn Burrs small berry bowl
G Butterfly & Berry small footed berry bowl
G Grape & Cable thumbprint small berry bowls, need 3
G Acorn Burrs sugar, creamer, butter dish

Cliff and Jo Ann Ball, 572 West Park Street, Olathe, KS 66061
Phone: (913) 782-0415

G Lid for Inverted Feather cracker jar
W Fenton Butterflies bon bon or card tray
P Imperial Hobstar creamer
P Imperial Hobstar sugar
M Crucifix candlesticks, 8 sided base

Tom Bagot, 5 Tenth St., Barnegat, NJ 08005
Phone: (609) 698-2279

A/P Grape & Cable creamer, electric
A/P Grape & Cable spooner, electric
W/AO/elect Fine Cut & Roses rose bowl, minor damage OK
All Colors Tornado vases, damage ok, no cracks

HOACGA CONVENTION AUCTION
Saturday, May 3rd, Embassy Suites, Kansas City
Daryl and Norma Strohm Collection

SEECK AUCTIONS

Here is a little taste to tantalize your tummy:

M'burg Courthouse 3 in 1 edge bowl in lavender
M'burg 1910 Detroit Elks IC shaped bowl in amethyst
Four Seventy Four 8 pc. punch set in purple
Blueberry 7 pc. water set - marigold
Stippled Grape & Cable small size 8 pc. punch set in marigold
Rustic 18" funeral vase w/plunger base in amethyst
Dragon & Lotus IC shaped bowl in red
Dragon & Strawberry IC shaped bowls in blue & marigold
Dragon & Strawberry footed ruffled bowls in blue & marigold
M'burg Little Stars plate in green
Rustic 19" funeral vases in amethyst, blue, and marigold
Leaf Chain ruffled bowl in red
Persian Garden chop plate in white
Acorn Burrs 8 pc. punch set in purple
Springtime 7 pc. water set in green
Peacock & Grape spt ftd ruffled bowl in red
Springtime 4 pc. table set in green
Blackberry Block 7 pc. water set in blue
Tree Trunk 17½" funeral vase in purple
M'burg Hobstar & Feather 10 pc. punch set w/ Fleur De Lis interior in m
Captive Rose 9" plate in green
1910 Detroit Elks ruffled bowl in blue
Holly plate in amethyst
Peacocks ruffled bowl in aqua opal, purple and marigold
Grape & Cable banquet size 14 pc. punch set in marigold
Grape & Cable mid size 10 pc. punch set in purple
Orange Tree IC shaped bowl in red
Poppy Show plate in blue & marigold
Greek Key tankard water set in purple
Stippled Grape & Cable 9" plate in blue
Holly ruffled bowl in red
Rose Show plates in blue & marigold
Stag & Holly chop plate in marigold
Luster Rose 4 pc. table set in purple
M'burg Trout & Fly ruffled bowl in green
M'burg Hanging Cherries 7" plate in green
Vintage 7" ruffled bowl in aqua opal
Wishbone & Spades chop plate in purple
Milady 7 pc. tankard water set in blue
M'burg Seacoast pin dish in green
Grape Arbor tankard water set in white
Illinois Soldiers & Sailors plate in marigold
Oriental Poppy 7 pc. water sets in purple and marigold
M'burg Hobnail Swirl spittoon in marigold
M'burg Peacock whimsy master berry bowl in marigold

Contact us at 515-424-1116 to be put on our mailing list. Or you may send us a note at: PO Box 377, Mason City, IA 50402. Please specify "Carnival Glass".

SEECK AUCTION - PRICE RESULTS
Saturday, November 9, 1996, Wentzville, Missouri
(379 items - full listing)

- 10__ 1. Imperial Grape round berry bowl - purple
5__ 2. Imperial Grape round berry bowl - green
10__ 3. Holly ruffled compote - marigold
60__ 4. Question Mark ftd bon bon - purple - super
90__ 5. Question Mark ftd bon bon - vaseline - scarce color
25__ 6. Question Mark ftd bon bon - white - pretty
60__ 7. Florentine small candlesticks - amethyst
115__ 8. Florentine small candlesticks - vaseline
50__ 9. Florentine small candlesticks - celest blue
3000 10. Hearts & Flowers 9" plate - ice blue - a super rarity that is outstanding
75__ 11. Six Petals tri-cornered bowl - purple - nice
65__ 12. Fantail round ftd bowl - blue
85__ 13. Feathered Serpent 3 in 1 edge bowl - amethyst
450__ 14. Daisy & Drape flared out ftd vase - aqua opal
245__ 15. Imperial Grape 5 pc. wine set - purple - super
105__ 16. Imperial Grape 5 pc. wine set - marigold - also super
80__ 17. Hobstar & Shield tumblers (3) - marigold - scarce, choice
65,30
750__ 18. N's Corn vase - green - very scarce & pretty
650__ 19. N's Corn vase - lime green - has a pretty marigold iridescence
300__ 20. N's Corn vase - ice green - nice
170__ 21. Dugan Cherries ruffled bowl w/Jeweled Heart back - peach opal - scarce
115__ 22. Carolina Dogwood round bowl - peach opal - lots of opal
135__ 23. M'burg Blackberry Wreath 3 in 1 edge sauce - green - radium & super
95__ 24. M'burg Holly Sprig bon bon - amethyst - radium & super
8000 25. Acorn Burrs 7 pc. punch set - ice green - an ultra rarity, super opportunity to buy a once in a lifetime piece, small crack
45__ 26. Birds & Cherries bon bon - green, small nick
155__ 27. Imperial Grape water carafe - purple - spectacular
800__ 28. Singing Birds 7 pc. water set - green - super, as good as they get, scarce
85__ 29. Imperial Panel 11" vase - purple - super
200__ 30. Tornado large size vase - green - has some nicks at base, but nice
650__ 31. Holly ruffled bowl - marigold on moonstone - very rare bowl, pretty marigold irid.
300__ 31a. Leaf & Beads rosebowl w/plain interior - aqua opal
200__ 32. Leaf & Beads rosebowl w/plain interior - blue - nice
95__ 33. Leaf & Beads rosebowl w/plain interior - amethyst
225__ 34. Butterfly & Berry 7 pc. water set - marigold
450__ 35. Peacock at the Fountain compote - ice blue - super pretty & very rare, minor pinpoint on base
125__ 36. Swan Salt - purple - scarce color
185__ 37. Swan Salt - marigold - scarce
30__ 38. Swan Salt - pink
40__ 39. Swan Salt - celest blue
45__ 40. Swan Salt - ice green
900__ 41. Peacock & Grape spt ftd ruffled bowl - red - very nice, as good as I've seen, a little amberina in the feet
65__ 42. M'burg Holly Whirl ruffled bowl - green - radium
75__ 43. M'burg Holly Sprig ruffled bowl - amethyst - radium
325__ 44. Stippled Grape & Cable 10" ruffled bowl - blue - scarce
115__ 45. Ribbon Tie low ruffled 3 in 1 edge bowl - blue - very flat, could call it a plate
900__ 46. Acorn Burrs 7pc. water set - purple - super set!
200__ 47. Acorn Burrs water set - green - has repaired spot on base, super pretty
65,55 48. Acorn Burrs tumblers (4) - green - choice
175__ 49. Poppy Pickle dish - blue - electric & super
1700 50. Diamond & Rio 5 1/2" whimsy vase, pinched in, then flared out - green - a great whimsy piece!
205__ 51. Wild Strawberry handgrip plate w/BW back - marigold
600__ 52. Waterlily ftd ruffled sauce - reverse amberina opal - super rarity, this is a tough one
650__ 52a. Waterlily ftd ruffled sauce - red - cherry & nice
95__ 53. Waterlily ftd ruffled sauce - amber - very scarce color
85__ 54. Waterlily ftd ruffled sauce - aqua - scarce
95__ 55. Waterlily ftd ruffled sauce - vaseline - scarce
135__ 56. Waterlily ftd ruffled sauce - green - scarce
25__ 57. Waterlily ftd ruffled sauce - blue
20__ 58. Waterlily ftd ruffled sauce - marigold
325__ 59. M'burg Peacock at Urn Mystery bowl - green - satin & super
200__ 60. Grape & Cable dresser tray - purple
350__ 61. Grape & Cable pin tray - purple - super pretty irid.!
55__ 62. Grape & Cable punch cup whimsy pin dish - purple - pretty
205__ 63. Grape & Cable powder jar - purple - nice
225__ 64. Grape & Cable cologne bottle - purple
275__ 65. Grape & Cable hatpin holder - purple
900__ 66. Lucile 7 pc. water set - blue - extremely rare set
45__ 67. M'burg Holly Sprig tri-cornered 6" bowl - amethyst - radium, minor nick on base, super
850__ 68. Peacocks ruffled bowl w/ribbed back - aqua opal - very rare & desirable
450__ 68a. Peacocks ruffled bowl w/ribbed back - blue - very nice
300__ 69. Peacocks ruffled bowl w/ribbed back - marigold - pretty
95__ 70. Nautilus creamer - peach opal
425__ 71. Pinecone 7" IC shaped bowl - green - super emerald irid.
625__ 72. M'burg Hanging Cherries IC shaped bowl -

aqua - extremely rare color & pretty, satin
 400_73. M'burg Hanging Cherries IC shaped bowl - green - scarce, satin
 145_74. M'burg Hanging Cherries IC shaped bowl - amethyst - satin
 195_75. M'burg Hanging Cherries IC shaped bowl - marigold - satin
 250_76. Kittens cup & saucer - marigold - dark w/excellent mold
 105_77. Kittens 4 sides up plate - marigold
 115_78. Kittens 2 sides up plate - marigold
 165_79. Kittens cereal bowl - marigold
 115_80. Kittens toothpick - marigold
 450_81. Stippled Grape & Cable tobacco humidor - marigold - very rare with stippling, seldom sold
 450_82. Grape & Cable tobacco humidor - marigold - dark & super
 75_83. M'burg Primrose ruffled bowl - amethyst - satin
 95_84. M'burg Primrose ruffled bowl - marigold - radium & nice
 475_85. Holly ruffled hat shape - red - cherry red, pretty
 95_86. Jack in the Pulpit vase - purple
 1050_87. Poinsettia milk pitcher - green - very scarce color
 55_88. Poinsettia milk pitcher - smoke - scarce (bruise)
 85_89. Poinsettia milk pitcher - marigold - pretty
 675_90. Poppy Show 9" plate - marigold - very rare & desirable plate
 35_91. Blackberry Spray ruffled hat shape - green - scarce
 195_92. Grape & Cable 9" plate w/BW back - green - nice
 105_93. Grape & Cable Variant 9" plate - marigold - nice
 200_94. Grape & Cable 4 pc. table set - amethyst - 160, 165, 105 choice
 200_95. M'burg Zig Zag 3 in 1 edge bowl - marigold - radium, pretty
 250_96. N's Flute 6 pc. water set - marigold - very scarce set
 175_97. Strawberry ruffled bowl - marigold - super
 175_98. Pony 10 ruffled bowl - amethyst - as good as they get
 115_99. Ripple 7" vase - purple - pretty
 1150_100. Luster Rose fruit bowl - red - super rare, super nice, a top piece in this sale
 25_101. Heavy Grape 8" plate - marigold
 200_102. Fenton's Peacock at Urn IC shaped bowl - blue - pretty
 150_103. Fenton's Peacock at Urn IC shaped bowl - marigold - just as pretty
 135_104. Rising Sun tumblers (3) - marigold (95,55)
 110_105. Rising Sun juice glass - marigold
 600_106. Fruits & Flowers 2 hldd bon bon - aqua opal - lots of opal, pastel irid., fabulous
 300_107. Fruits & Flowers 2 hldd bon bon - aqua opal - opal just on handles, completely different look, pretty
 135_108. Fruits & Flowers 2 hldd bon bon - blue - pretty
 55_109. Wreath of Roses tri-cornered rosebowl

whimsey - amethyst - (base chip)
 95_110. Wreath of Roses tri-cornered rosebowl
 whimsey - aqua - very rare color
 105_111. Wreath of Roses non ruffled whimsey punch bowl & base - amethyst - very rare shape, not many known (bowl cracked)
 85_112. Captive Rose CRE edge bowl - green - pretty
 75_113. Captive Rose CRE edge bowl - marigold - dark & pretty
 150_114. N's Town Pump - purple - handle damage
 75_115. Little Fishes collar based 6" ruffled sauce w/no feet - marigold
 300_116. Orange Tree powder jar - amethyst - rare color & nice
 40_117. Orange Tree powder jar - blue - lid chip, very pretty
 90_118. Malaga deep round bowl - amethyst - rare color
 400_119. N's Peacock at Urn master IC bowl - amethyst - very scarce & desirable
 55_120. N's Peacock at Urn individual IC bowl - amethyst
 400_121. N's Peacock at Urn master IC bowl - white - always in demand
 150_122. N's Peacock at Urn individual IC bowl - white - super
 275_123. N's Peacock at Urn master IC bowl - marigold - scarce
 205_124. N's Peacock at Urn individual IC bowl - blue - electric
 250_125. Soutache dome ftd plate - peach opal - pretty & scarce
 205_126. M'burg Hobnail rosebowl - amethyst - very scarce
 75_127. M'burg Hobnail rosebowl - marigold - also very scarce (hob chipped)
 800_128. Floral & Grape Variant 7pc. water set - green - super color & iridescence on this rare set
 85_129. Constellation ruffled compote - white
 450_130. Rose Show ruffled bowl - marigold - super pretty
 195_131. Fenton's Peacock at Urn ruffled compote - vaseline - nice
 165_132. Grape & Cable Variant ruffled bowl w/plain back - green
 115_133. Grape & Cable Variant ruffled bowl w/plain back - lavender
 105_134. Grape & Cable Variant ruffled bowl w/plain back - purple
 85_135. Wishbone ftd ruffled bowl - purple - pretty
 200_136. Grape & Cable dresser tray - marigold - very nice
 35_137. Grape & Cable punch cup whimsey pin dish - marigold
 225_138. Grape & Cable cologne bottle - marigold
 625_139. Fine Rib 10" vase - red - scarce & desirable
 65_140. Peacock & Grape IC shaped bowl - blue - pretty
 500_141. Stippled Three Fruits spt ftd ruffled bowl - aqua opal - a nice aqua opal piece that's

always in demand

135_142. M'burg Fleur De Lis collar based ruffled bowl - marigold - radium
 125_143. M'burg Fleur De Lis collar based ruffled bowl - amethyst - satin
 175_144. Question Mark ftd plate - white - pretty & very scarce
 145_145. Grape & Cable master berry bowl - green
 115_146. Fanciful IC shaped bowl - white - pretty
 200_147. Western Thistle tumblers (3) - blue - very scarce tumblers, choice
 75_148. Wide Panel Thistle tumbler - blue - scarce
 300_149. Grape Arbor ruffled hatshape - ice green - very scarce item, made from the tumbler
 55_150. Holly & Berry ruffled bowl - peach opal
 55_151. Persian Garden 6" plate - marigold
 600_152. Hearts & Flowers ruffled compote - ice blue - very rare & desirable, nice
 575_153. Hearts & Flowers ruffled compote - aqua opal - nice opal, pretty irid.,
 450_154. Hearts & Flowers ruffled compote - aqua opal - butterscotch irid., nice
 550_155. Hearts & Flowers ruffled compote - blue - electric & super
 625_156. Hearts & Flowers ruffled compote - purple - also electric
 175_157. Hearts & Flowers ruffled compote - marigold - nice
 150_158. Hearts & Flowers ruffled compote - white
 75_159. Horse Medallion IC shaped collar based bowl - marigold
 300_160. M'burg Diamonds 6 pc. water set - marigold - scarce
 135_161. Ribbon Tie 3 in 1 edge bowl - amethyst - pretty irid.
 45_162. Grape & Cable spt ftd plate - ice green - large spot of epoxy on foot
 350_163. Fenton's Peacock at Urn ruffled bowl - amethyst - prettiest amethyst one I have seen
 185_164. Fenton's Peacock at Urn 6 ruffled bowl - white
 425_165. Dandelion mug - aqua opal - very scarce
 155_166. Drapery ftd candy dish - ice blue - extremely flat
 155_167. Drapery ftd candy dish - ice blue - very deep
 425_168. Good Luck ruffled bowl w/ribbed back - blue - electric & pretty
 300_169. Good Luck ruffled bowl w/ribbed back - purple
 175_170. Strawberry 9" plate w/BW back - purple
 145_170a. Strawberry 9" plate w/BW back - green
 65_171. Grape & Cable bon bon - blue - scarce color
 85_172. Grape & Cable bon bon - green - pretty
 155_173. M'burg Nesting Swan ruffled bowl - marigold - satin
 95_174. Lined Lattice 10" vase - white
 350_175. Raspberry milk pitcher - purple - nice
 850_176. Peacock & Grape ruffled bowl - red slag - very rare color

X_177. Peacock & Grape ruffled bowl - lime green opal - lots of opal, a good example
 400_178. Dugan's Peacock at the Fountain 7 pc. water set - blue
 225_179. Beaded Cable rosebowl - aqua opal - (ft nick)
 75_180. Beaded Cable rosebowl - marigold
 750_181. Stippled Peacocks 9" plate - marigold - lots of yellow, green & pink irid.
 35_182. Grape & Cable 7" card tray shaped plate - marigold
 75_183. Grape & Cable 6" card tray shaped plate - marigold
 55,15 183a. Tiger Lily Variant tumblers (2) - blue - choice
 30_184. Cherry Band tumbler - blue - lacks irid., scarce
 60_185. Cherry Band tumblers (2) - marigold - scarce, choice
 500_186. Rose Show 9" plate - pastel marigold - pretty - very scarce & desirable
 250_187. Rose Show 9" plate - marigold - very dark & rare (silver off rose)
 50_188. Two Flowers large ftd IC shaped bowl - marigold
 265_189. Pinecone 6" saucer shaped plate - green - scarce
 325_190. Three Fruits 9" plate w/BW back - purple - super pretty irid.
 200_191. Three Fruits 9" plate w/BW back - green - pretty
 95_192. Three Fruits 9" plate w/BW back - marigold - also pretty
 450_193. Orange Tree standard size mug - red - very nice example, red irid.
 45_194. Nippon PCE bowl - ice blue - (inside hit)
 145_195. Nippon PCE bowl - white - pretty
 180_196. Fern ruffled compote - green - nice
 85_197. Fern ruffled compote - purple
 450_198. Beaded Acanthus milk pitcher - marigold - pretty, very scarce pitcher to find
 85_199. M'burg Peacock Tall Variant ruffled compote - green - radium & pretty
 4000_200. Garden Path Variant chop plate - amethyst - super rare chop plate w/outstanding color & iridescence
 115_201. Lined Lattice 6" plate - marigold
 135_202. Four Pillars 10" vase - aqua opal - lots of opal, butterscotch irid.
 250_203. Grape & Cable cracker jar - purple - minor nicks on inside rim of base
 350_204. Grape & Cable cracker jar - marigold - dark & beautiful
 400_205. Diamond Lace 5 pc. water set - purple - spectacular matching set
 125_206. Grape & Cable 7" handgrip plate - purple - pretty
 95_207. Grape & Cable 7" handgrip plate - marigold - pretty
 1600_208. Hearts & Flowers PCE bowl - purple - extremely rare, electric blue highlights, a nice piece
 95_208a. Leaf & Beads rosebowl w/Sunflower interior - purple

95_209. Leaf & Beads rosebowl w/Sunflower interior - amethyst
 45_210. Imperial Grape low ruffled bowl - purple
 85_211. Imperial Grape low ruffled bowl - lavender
 20_212. Imperial Grape low ruffled bowl - marigold
 375_213. Peacocks 9" plate w/ribbed back - blue - pretty w/electric blue irid.
 500_214. Peacocks 9" plate w/ribbed back - purple - very nice
 450_215. Peacocks 9" plate w/ribbed back - marigold - dark & pretty
 475_216. Peacocks 9" plate w/ribbed back - ice green
 45_217. Leaf Rays ruffled nappy - lavender - pretty! not your normal nappy
 85_218. Leaf Rays tri-cornered nappy - purple - pretty
 350_219. M'burg Peacocks ruffled 10" bowl - amethyst - radium, nice
 265_220. M'burg Seaweed 3 in 1 edge bowl - mangold - satin, scarce
 30_221. Peacock Tail ruffled compote - green
 175_222. Stag & Holly large ftd ruffled bowl - blue
 500_223. Grape Arbor 7 pc. tankard water set - marigold - very pretty set
 45_224. M'burg Hanging Cherries 7" IC shaped bowl - marigold - satin
 120_225. N's Bushel Basket - aqua opal - nice, butterscotch (silver off foot)
 215_226. N's Bushel Basket - ice green
 105_227. N's Bushel Basket - marigold
 95_228. Holly deep round bowl - black amethyst - scarce, rare shape
 160_229. Fern Panels ruffled hatshape - red - very scarce hatshape (pinpoint on base)
 30_230. Grapevine Lattice ruffled bowl - white
 550_231. Poppy Show ruffled bowl - blue - very rare color & nice
 325_232. Poppy Show ruffled bowl - white - scarce & desirable
 175_233. Cherry Circles 2 hdd round bon bon - green - pretty, very scarce color
 95_234. Ski Star banana boat shaped crimped edge dome ftd bowl - peach opal - scarce shape & pretty
 205_235. Stippled Grape & Cable PCE bowl - blue - silvery
 165_236. Good Luck ruffled bowl w/BW back - marigold - dark & super
 275_237. Grape & Cable 4 pc. punch set - purple - always in demand
 20x5 238. Grape & Cable Variant punch cups (5) - purple - scarce punch cups, choice
 165_239. Florentine large size candlesticks - russet
 160_240. Holly 9" plate - white - scarce
 175_241. Holly 9" plate - marigold - pretty
 65_242. Holly 9" plate - marigold - lacks irid.
 105_243. Stippled Grape & Cable ruffled bowl - purple - scarce
 95_244. Vintage 7" plate - marigold
 425_245. Stippled Three Fruits 9" plate w/ribbed back - blue - rare

200_246. Stippled Three Fruits 9" plate w/ribbed back - purple - super!
 130_247. Stippled Three Fruits 9" plate w/ribbed back - mangold
 375_248. M'burg Poppy round compote - amethyst - radium, scarce
 350_249. M'burg Trout & Fly ruffled bowl - marigold - radium & super nice!
 95_250. Grape & Cable ruffled bowl - purple - pretty
 250_251. Blossomtime ruffled compote - purple - super nice compote
 400_252. Blossomtime ruffled compote - marigold - also nice
 75_253. Persian Medallion 6" plate - marigold - nice
 85_254. Dahlia spooner - white
 325_255. Grape & Cable hatpin holder - green
 125_256. Grape & Cable 8" plate - amethyst - pretty, much harder to find then people think
 210_257. Daisy & Drape vase - white - turned in
 130_258. Drapery rosebowl - amethyst - scarce
 500_259. Grape & Cable ruffled bowl - red - more of a brick red but pretty
 110_260. Nautilus whimsey creamer - purple - scarce
 100_261. Nautilus whimsey sugar - purple - scarce
 350_262. Panelled Dandelion tankard water pitcher - marigold - very nice example, very scarce & desirable
 30_263. Little Barrel - green
 950_264. Leaf Chain 7" ruffled bowl - red - cherry & super, as pretty as they get
 40_265. Fish Scale & Beads ruffled bowl - marigold
 285_266. Ragged Robin 3 in 1 edge bowl - marigold
 500_267. M'burg Trout & Fly ruffled bowl - green - satin & super, scarce
 350_268. M'burg Trout & Fly ruffled bowl - marigold - satin & super, scarce
 125_269. M'burg Cherries ruffled 9" bowl - amethyst - radium & rare, very tough in this size
 250_270. M'burg Leaf & Little Flowers sherbert shaped miniature compote - marigold - very scarce, radium
 40_271. Octagon wine bottle & stopper - marigold - super dark color
 55_272. Pond Lily card tray shaped bon bon - white - nice
 45_273. Pond Lily bon bon - white
 274_274. Basketweave Open Edge ruffled hat shape - red - always in demand
 75_275. Basketweave Open Edge ruffled hat shape - aqua - nice
 15_276. Basketweave Open Edge ruffled hat shape - marigold
 160_277. Dragon & Strawberry Collar based IC shaped bowl - blue - pretty but has chip on edge
 375_278. Grape & Cable 7 pc. water set - green - very nice set
 145_279. Blackberry Banded ruffled hat shape - white - pretty & very scarce
 525_280. Persian Madallion bon bon - red - a must for red collectors, very scarce & desirable

175_281. Persian Medallion bon bon - vaseline - has very little marigold overlay, super nice
 30_282. Open Rose 9" plate - mangold
 450_283. Poinsettia & Lattice ftd ruffled bowl - marigold - very scarce bowl, nice
 180_284. M'burg Fleur De Lis dome ftd IC shaped bowl - green - minor nick one base, common on this piece, radium
 X_285. M'burg Fleur De Lis dome ftd ruffled bowl - amethyst - radium & super
 500_286. M'burg Little Stars 7" 3 in 1 edge bowl - marigold - satin & nice, hard to find with this edge
 250_287. Brooklyn Bridge ruffled bowl - marigold - nice, always desirable
 15_288. Grape & Cable tumbler - marigold
 475_289. Orange Tree Orchard 7 pc. water set - blue - set is not only rare, but pitcher is super
 75_290. Grape & Cable handgrip 6" plate - amethyst - nice
 900_291. Stippled Grape & Cable PCE bowl - ice blue - very rare item, has great color and iridescence
 50_292. Pansy ruffled bowl - purple - pretty
 65_293. Fanciful low ruffled bowl - peach opal - small nick on edge
 350_294. Australian Kookaburra large ruffled bowl - amethyst - scarce item
 40_295. Four Flowers ruffled sauce - peach opal
 75_296. Flute toothpick - amethyst
 75_297. Flute toothpick - green
 55_298. Flute toothpick - mangold
 215_299. M'burg Hobnail Swirl rose bowl - amethyst - scarce
 225_300. M'burg Hobnail Swirl rose bowl - marigold - also scarce
 1200_300a. Peacock at the Fountain butterdish, sugar, & spooner - ice blue - very rare items, sold choice
 400_301. M'burg Hobnail Swirl spittoon - marigold - very rare piece, minor nicks on top edge, pretty
 45_302. Stippled Rays creamer & sugar - blue
 425_303. Stippled Rays round bowl - red - cherry red color, pretty
 10_304. Stippled Rays 6" plate - marigold
 400_305. Peacocks 9" plate w/plain back - ice green - nice
 450_306. Peacocks 9" plate w/plain back - white - also nice
 225_307. Rose Bouquet 2 hdd bon bon - white - very, very rare
 50_308. M'burg Strawberry Wreath ruffled compote - mangold - scarce
 325_309. Wishbone 9" ftd plate - purple - scarce
 10_310. Coin Dot 7" IC shaped bowl - amethyst
 400_311. Orange Tree hatpin holder - blue
 165_312. Grape & Cable sweatmeat - purple
 350_313. Grape & Cable candlesticks - purple - nice
 300_314. Blackberry Spray JIP CRE hatshape - red -

rare shape
 205_315. M'burg Little Stars 7" ruffled bowl - green - satin
 60_316. N's Wide Panel indiv. nut dish - celest blue
 75_317. File & Fan compote - blue opal
 250_318. Stippled Peacocks ruffled bowl - marigold - pastel & nice
 75_319. Lions ruffled bowl - marigold
 175_320. Orange Tree 9" plate - marigold - nice
 75_321. M'burg Holly Sprig 8" round bowl - amethyst - radium
 105_322. Flying Bat hatpin - dark
 50_323. Butterflies hatpin - dark
 55_324. Tufted Throw pillow hatpin - dark
 55_325. Basketflower - hatpin - dark
 50_326. Owl hatpin - blue - non iridized
 85_327. Top of the Walk hatpin - dark
 25_328. Big Butterfly hatpin - dark
 135_329. M'burg Peacock whimsey proof berry bowl - amethyst - radium & pretty!
 140_330. M'burg Sunflower pin dish - aqua - has nick on back of leaves
 75_331. Acorn ruffled bowl - aqua
 30_332. Honey pot - blue
 850_333. Hearts & Flowers ruffled bowl - ice green - pretty & very scarce
 325_334. Hearts & Flowers ruffled bowl - ice blue - nice
 325_335. Hearts & Flowers ruffled bowl - white - nice
 65_336. M'burg Holly Sprig tri-cornered single hdd nappy - amethyst - radium, super
 225_337. Good Luck ruffled bowl w/plain back - purple - pretty bowl, unusual w/plain back
 40_338. Stretch tumbler w/blue handle - vaseline
 200_339. Inverted Feather cracker jar - green
 1350_340. M'burg Wild Rose mid-size kerosene lamp - amethyst - super rare color for this rare lamp
 30_341. Plain Jane miniature basket - marigold - Delhi, NY adv
 275_342. Blackberry Open Edge ruffled basket - red - dark irid.
 65_343. Birds & Cherries ruffled compote - mangold - pretty
 25_344. Honeycomb rosebowl - peach opal - nice
 115_345. Buzz Saw small size cruet - green - large chip on stopper, at least it has one
 10_346. Basketweave miniature hdd basket - marigold
 40_347. Coal bucket - mangold - Sov. of Westville, N.S.
 800_348. Tornado small size vase - marigold - dark & pretty
 35_349. Vintage powder jar - marigold
 155_350. Four Seventy Four milk pitcher - marigold
 35_351. Startyte lamp shade - marigold
 50_352. Butterfly nut dishes(3) - aqua
 200_353. Fine Cut & Roses rosebowl - ice blue - always desired
 125_354. Flute & Cane milk pitcher - marigold
 150_355. Drapery 8" vase - ice green - nice vase
 45_356. Scroll Embossed ruffled bowl - purple - Imperial

at its best
 125_357. Greek Key ruffled bowl - marigold
 105_358. Grape & Cable butterdish - mangold - nice
 350_359. Good Luck PCE bowl w/ribbed back - blue
 - scarce
 65_360. Imperial Grape 5 pc. berry set - purple
 150_361. Horse Medallion rosebowl - blue - scarce
 rosebowl
 45_362. Rising Sun water pitcher - marigold - crack in
 base
 50_363. Wide Panel deep round bowl - red stretch
 2250_364. Rose Show Variant 9" plate - marigold -
 very very pretty pastel irid., even & super,
 a great plate!
 ___365 - 379. Includes new glass: Large bulldog -
 aqua, Frog - aqua, Frog - green, Large deep
 bowl - red, '83, '84, '85, '86, '87, '88, '92, '93,
 '94, '95 - HOACGA Sov. mugs, '92 HOACGA
 Hobnail spittoon (artist decorated) - aqua, '93
 HOACGA Good Luck plate - red, Fenton
 Butterfly - amethyst, HOACGA Good Luck
 hatpin - lavender, Imperial Grape wine bottle -
 marigold (IG), '87 HOACGA Bell w/enameled
 paint - blue, toothpick - blue, old plain juice
 glass - marigold, old Interior Swirls wine bottle
 - marigold (cracked), crackle car vase -
 marigold - CHOICE

Wine Bottle - 55 -
 Frog - 45 -
 Frog - 35 -
 spittoon - 10 -
 toothpick - 10 -
 hatpin - 10 -
 mugs - 6 x 30 -
 3 x 10 -