

SMALL PLATES

This is the first of two (2) sections on Small Plates. The second part will have the remainder of the Small Plates and the small Advertising Plates.

This is a difficult section to organize because of the different opinions of what collectors call Small Plates. Several of the plates were made from other pieces, i.e. the Two Row Open Edge Blackberry plate. This section includes sizes from 4½ to 8 inches in diameter; also included are some ruffled or crimped edge plates which may not be considered a plate by some collectors.

Regardless of the agreements or disagreements the primary purpose is to provide information about the various patterns that present and future Carnival Glass collectors may use as they want.

Special thanks to to the following collectors for supplying photographs and other pertinent information needed for this section of small plates.

- | | |
|------------------------------|--------------------|
| 1. Dave & Emma Ackerman | Cass City, MI. |
| 2. Jack & Mary Adams | West Salem, WI. |
| 3. John & Lucille Britt | Manhattan, KS. |
| 4. Lee & Marvi Briix | Hennessey, OK. |
| 5. Don & Barbara Chamberlain | Winthrop, IA. |
| 6. Wayne & Helen Christie | Arlington, VA. |
| 7. Thurlin & Betty Cloud | Pontiac, MI. |
| 8. Fred & Helen Greguire | Hilton, NY. |
| 9. Bob & Rosa Grissom | Raytown, MO. |
| 10. Jack & Eleanor Hamilton | Waco, TX. |
| 11. Bob & Shirley Hill | Reidsville, NC. |
| 12. Larry Keig | Fayette, IA. |
| 13. Don & Connie Moore | Alameda, CA. |
| 14. Alan & Lorraine Pickup | Hazelwood, MO. |
| 15. John & Pat Resnik | Culver City, CA. |
| 16. Al Rettke | Burnsville, MN. |
| 17. Jerry & Jackie Stoner | Oklahoma City, OK. |

Without the help of these collectors this section could not have been printed.

This information is assembled and presented by the HEART OF AMERICA CARNIVAL GLASS COLLECTORS ASSOCIATION for the benefit of the Carnival Glass Collector.

Small Plates



**MIRRORED LOTUS
BERRY & LEAF CIRCLE**

1. Pattern: PLAIN/BEADS & FLOWERS

Maker: Dugan

Color: 7-7½ inch

Amethyst
Peach Opalescent

Note: Backside shown

2. Pattern: PLAIN/BASKETWEAVE (Two Row Open Edge)

Maker: Fenton

Color: 7 inch

Blue
Marigold

Note: This has the two row open edge.

3. Pattern: BELLS & BEADS/PLAIN

Maker: Unknown

Color: 7 inch

Amethyst
Peach Opalescent



1. PLAIN/BEADS & FLOWERS



2. PLAIN/BASKETWEAVE



3. BELLS & BEADS/PLAIN

4. Pattern: BLACKBERRY/BASKETWEAVE

Maker: Fenton

Color: 7½ inch

Blue
Marigold
White

Note: This plate has the two row open edge.

5. Pattern: BLACKBERRY WREATH/WIDE PANEL

Maker: Millersburg

Color: 6½ inch

Amethyst (Rare)
Green (Rare)
Marigold (Rare)

8 inch

Green (Rare)

Note: Only 1 Green 8 inch known.

6. Pattern: COSMOS/PLAIN

Maker: Millersburg

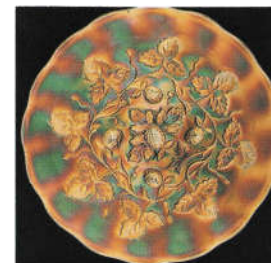
Color: 6 inch

Green

Note: Most of these plates have a slight turned up edge.



4. BLACKBERRY/BASKETWEAVE



5. BLACKBERRY WREATH/WIDE PANEL



6. COSMOS/PLAIN

7. Pattern: CHERRY/JEWEL HEART

Maker: Dugan

Color: 6 inch

Amethyst (Rare)
Peach Opalescent (Rare)

Note: Can be found with a Crimped or Ruffled edge.

8. Pattern: CHERRY CHAIN/ORANGE TREE

Maker: Fenton

Color: 6½ inch

Amethyst (Rare)
Blue
Marigold

9. Pattern: PLAIN/COLUMBUS

Maker: Unknown

Color: 8 inch

Marigold

Note: Also known as Sailing Ship.



7. CHERRY/JEWEL HEART



8. CHERRY CHAIN/ORANGE TREE



9. PLAIN/COLUMBUS

10. Pattern: PLAIN/MILL & CHECKERS

Maker: Unknown

Color: 8 inch

Marigold

Note: Known as Dutch Pattern

11. Pattern: FENTON'S DAISY/WIDE PANEL

Maker: Fenton

Color: 6½ inch

Amethyst

12. Pattern: PLAIN/FIELD THISTLE

Maker: U.S. Glass

Color: 6 inch

Marigold (Rare)



10. PLAIN/MILL & CHECKERS



11. FENTON'S DAISY/WIDE PANEL



12. PLAIN/FIELD THISTLE

13. Pattern: FISHSCALES / BEADS

Maker: Dugan
Color: 7 inch
 Amethyst (Rare)
 Marigold
 Peach Opalescent (Rare)
 White
Note: 1. Pattern is Fishscales & Beads
 2. Can be found with Fluted or Smooth edge.

14A. Pattern: FOUR FLOWERS / BASKETWEAVE VARIANT

Maker: Dugan
Color: 6½ inch
 Marigold
 Peach Opalescent
Note: Also known as Pods & Posies

14B. Pattern: FOUR FLOWERS / PLAIN

Maker: Dugan
Color: 6½ inch
 Amethyst (Rare)
 Marigold
 Peach Opalescent
Note: Also known as Pods & Posies.



13. FISHSCALES / BEADS



14. FOUR FLOWERS

15. Pattern: FRUITS & FLOWERS / BASKETWEAVE

Maker: Northwood
Color: 7-7½ inch
 Amethyst (Rare)
 Blue (Rare)
 Green (Rare)
 Ice Blue (Rare)
 Marigold
Note: 1. Only 1 known in Ice Blue & Blue
 2. Found with Plain or 3 leaves in center.
 3. Found in Flat or Handgrip.

16. Pattern: GARDEN PATH VARIANT / SODA GOLD

Maker: Dugan
Color: 6 inch
 Amethyst (Rare)
 Marigold (Rare)
 Peach Opalescent (Rare)
 White (Rare)

17. Pattern: GRAPE & CABLE / BASKETWEAVE

Maker: Northwood
Color: 6½ inch
 Amethyst
 Green
 Ice Blue (Rare)
 Marigold
 8 inch
 Amethyst
 Green
 Ice Blue (Rare)
 Marigold
Note: Also can be found in Handgrip.



15. FRUITS & FLOWERS / BASKETWEAVE



16. GARDEN PATH VARIANT / SODA GOLD



17. GRAPE & CABLE / BASKETWEAVE

18. Pattern: GRAPEVINE LATTICE / PLAIN

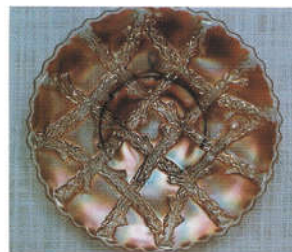
Maker: Dugan
Color: 6½-7 inch
 Amethyst
 Marigold
 Peach Opalescent
 White
 8 inch
 Amethyst
 Marigold
 Peach Opalescent
 White
Note: Some colors are found in both Flat and Ruffled.

19. Pattern: GRAPE WREATH VARIANT / WIDE PANEL

Maker: Millersburg
Color: 6 inch
 Amethyst (Rare)
 Green (Rare)
 Marigold (Rare)
Note: Has a Ruffled edge.

20. Pattern: HANGING CHERRY / WIDE PANEL

Maker: Millersburg
Color: 6 inch
 Marigold (Rare)



18. GRAPEVINE LATTICE / PLAIN



19. GRAPE WREATH VARIANT / WIDE PANEL



20. HANGING CHERRY / WIDE PANEL

21. Pattern: HEAVY GRAPE / WIDE PANEL

Maker: Imperial
Color: 6½ inch
 Amber
 Amethyst
 Green
 Marigold
 Smoke (Rare)
 8 inch
 Amber
 Amethyst
 Green
 Marigold
 Smoke (Rare)
 Vaseline (Rare)
Note: Vaseline Plate does not have the rayed bottom.

22. Pattern: HORSE MEDALLION / BERRY & LEAF CIRCLE

Maker: Fenton
Color: 7½ inch
 Amethyst (Rare)
 Blue (Rare)
 Marigold
Note: 1. Only 1 known in Amethyst.
 2. Also known as Horses Head Pattern.

23. Pattern: IMPERIAL GRAPE / GRAPES

Maker: Imperial
Color: 6½ inch
 Amber
 Amethyst
 Blue (Rare)
 Green
 Lime Green
 Marigold



21. HEAVY GRAPE / WIDE PANEL



22. HORSE MEDALLION / BERRY & LEAF CIRCLE



23. IMPERIAL GRAPE / GRAPES

24. Pattern: KITTENS / PLAIN

Maker: Fenton

Color: 4½ inch

Blue (Rare)

Marigold (Rare)

25. Pattern: LAUREL LEAVES /

PLAIN

Maker: Imperial

Color: 6 inch

Marigold

26. Pattern: LEAF CHAIN /

BERRY & LEAF

CIRCLE

Maker: Fenton

Color: 7½ inch

Blue

Celeste Blue (Rare)

Marigold

White

Note: The Celeste Blue Plate is in Australia.



24. KITTENS / PLAIN



25. LAUREL LEAVES / PLAIN



26. LEAF CHAIN / BERRY & LEAF CIRCLE

27. Pattern: LITTLE FLOWERS /

WIDE PANEL

Maker: Fenton

Color: 6½ inch

Marigold (Rare)

Vaseline (Rare)

Note: Only 1 known in Vaseline.

28. Pattern: MIRRORED

LOTUS / BERRY &

LEAF CIRCLE

Maker: Fenton

Color: 7½ inch

Celeste Blue (Rare)

29. Pattern: PLAIN / OPTIC &

BUTTONS

Maker: Imperial

Color: 6 inch

Marigold

Smoke

7½ inch

Smoke



27. LITTLE FLOWERS / WIDE PANEL



28. MIRRORED LOTUS / BERRY & LEAF CIRCLE



29. PLAIN / OPTIC & BUTTONS

30. Pattern: PLAIN /

PALM BEACH

Maker: U.S. Glass

Color: 6½ inch

Amethyst (Rare)

Marigold (Rare)

Note: The Amethyst is very light color.

31. Pattern: PEACOCK &

DAHLIA / BERRY &

LEAF CIRCLE

Maker: Fenton

Color: 7½ inch

Marigold

32. Pattern: PEACOCK TAIL /

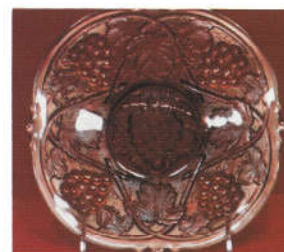
WIDE PANEL

Maker: Fenton

Color: 6 inch

Amethyst

Marigold



30. PLAIN / PALM BEACH



31. PEACOCK & DAHLIA / BERRY & LEAF CIRCLE



32. PEACOCK TAIL / WIDE PANEL

33. Pattern: PEACOCK AND

URN / WIDE

PANEL

Maker: Millersburg

Color: 6 inch

Amethyst (Rare)

Marigold (Rare)

Blue (Rare)

34. Pattern: PEACOCK &

URN / WIDE

PANEL

Maker: Northwood

Color: 5½-6 inch

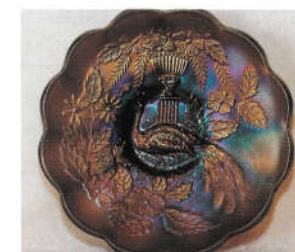
Amethyst (Rare)

Marigold

Note: Only 1 of each color known.



33. PEACOCK AND URN / WIDE PANEL



34. PEACOCK & URN / WIDE PANEL

35A. Pattern: PERSIAN GARDEN/BASKETWEAVE
Variant

Maker: Dugan
Color: 7 inch
Amethyst (Rare)
Blue (Rare)
Marigold
Peach Opalescent (Rare)
White
Note: Only One Blue known

35B. Pattern: PERSIAN GARDEN/POOL OF PEARLS

Maker: Dugan
Color: 6½ inch
White

35C. Pattern: PERSIAN GARDEN/PLAIN

Maker: Dugan
Color: 6½ inch
White



35. PERSIAN GARDEN

36A. Pattern: PERSIAN MEDALLION/PLAIN

Maker: Fenton
Color: 6½ inch
Amethyst (Rare)
Black (Rare)
Blue
Green (Rare)
Marigold
Vaseline (Rare)
White (Rare)

36B. Pattern: PERSIAN MEDALLION/ORANGE TREE

Maker: Fenton
Color: 6-6½ inch
Amethyst
Blue
Green (Rare)
Marigold

37. Pattern: PETAL & FAN/JEWEL HEART

Maker: Dugan
Color: 6½ inch
Amethyst
Peach Opalescent



36. PERSIAN MEDALLION



37. PETAL & FAN/JEWEL HEART

38A. Pattern: PINECONE/PLAIN

Maker: Fenton
Color: 6-6½ inch
Amethyst
Blue
Green
Marigold
7½ inch
Amber (Rare)
Amethyst (Rare)
Blue (Rare)
Green (Rare)
Marigold (Rare)
Note: Six inch size are saucer shaped.

38B. Pattern: PINECONE/WIDE PANEL

Maker: Fenton
Color: 6 inch
Amethyst
Blue
Green
Marigold
Note: These plates have a Fluted edge.

39. Pattern: QUESTION MARKS/GEORGIA BELLE

Maker: Dugan
Color: 7 inch
Amethyst (Rare)
Marigold (Rare)
Peach Opalescent (Rare)
White (Rare)
Note: This plate has a dome foot with the Puzzle Pattern on it.



38. PINECONE



39. QUESTION MARKS/GEORGIA BELLE

40. Pattern: SAILBOATS/ORANGE TREE

Maker: Fenton
Color: 6½ inch
Blue (Rare)
Marigold (Rare)

41. Pattern: SCROLL EMBOSSED VARIANT/PRESSED PATTERN

Maker: Sowerby
Color: 7½ inch
Green (Rare)
Note: 1. The backside pressed pattern is unlisted.
2. Only one plate known.

42. Pattern: SCALES/PLAIN

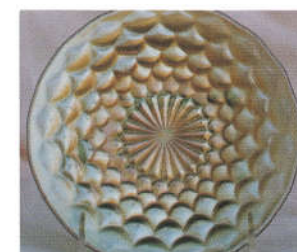
Maker: Westmoreland
Color: 6-6½ inch
Amber
Amethyst
Aqua
Green (Teal)
Marigold
Peach Opalescent



40. SAILBOATS/ORANGE TREE



41. SCROLL EMBOSSED VARIANT/PRESSED PATTERN



42. SCALES/PLAIN

43. Pattern: SKI STAR/COMPASS

Maker: Dugan

Color: 6 1/2 inch

Amethyst
Marigold

Note: Peach Opalescent
These plates have a
Crimped edge.

44. Pattern: STIPPLED RAYS/SCALE BAND

Maker: Fenton

Color: 4 1/2 inch

Amethyst

6 1/2 inch

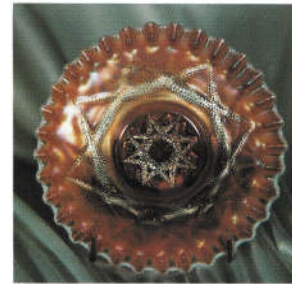
Amber
Amethyst
Blue
Green
Marigold
Red (Rare)
Vaseline (Rare)
White

45. Pattern: SMOOTH RAYS/JEWELED HEART

Maker: Dugan

Color: 6 1/2 inch

Amethyst



43. SKI STAR/COMPASS



44. STIPPLED RAYS/SCALE BAND



45. SMOOTH RAYS/JEWELED HEART

46A. Pattern: PLAIN/STAR & FILE

Maker: Imperial

Color: 6 inch

Marigold

Note: This plate has 6 stars in its
pattern.

46B. Pattern: PLAIN/STAR & FILE

Maker: Imperial

Color: 6 1/2 inch

Marigold

Note: This plate has 8 stars in its
pattern.



46. STAR & FILE

47. Pattern: PLAIN/STAR MEDALLION

Maker: Imperial

Color: 6 1/2 inch

Marigold

48. Pattern: SWIRL/PLAIN

Maker: Imperial

Color: 7 inch

Marigold

Smoke

Note: Backside shown.



47. PLAIN/STAR MEDALLION



48. SWIRL/PLAIN