

## REGULAR PLATES

This the second of two Notebook sections on the Regular Plates (9 inches). The PATTERN identification is listed as Inside/Outside.

Several of the COLORS are listed as Rare (R), but, this is not intended to say the other colors are not as desirable or easy to find.

In the first section of regular plates I failed to give recognition to Helen James for compiling a list of known Plate patterns. Helen with her late husband Kenny were collecting plates when most collectors were collecting Grape & Cable. Special thanks to Ray & Rae Ann Hitchcock, John & Lucile Britt, Don & Connie Moore, Carl & Eunice Booker for reviewing and suppling information about the list of plates and Dale Matheny for providing several photographs from his collection.

The preparation, compiling and presentation of this plate section would not have been possible without photographs and information supplied by the following members:

Jack & Mary Adams	West Salem, WI.
Milt & Marge Almquist	Omaha, NE.
Carl & Eunice Booker	Griffith, IN.
John & Lucille Britt	Manhattan, KS.
Don & Barb Chamberlain	Manchester, IA.
Jerry & Norma Cole	Blue Springs, MO.
Joe Corrothers	Maumee, OH.
L.L. & Jane Dinkins	Houston, TX.
Clint & Gene Fox	Dallas, TX.
Gerald & Beverly Franzen	Oregon City, OR.
Dean & Diane Fry	San Diego, CA.
Fred & Helen Greguire	Hilton, NY.
Bob & Rosa Grissom	Raytown, MO.
Ray & Rae Ann Hitchcock	Winterset, IA.
Helen James	Olathe, KS.
Todd & Susan Kuwitzky	Omaha, NE.
Dale Matheny	Belmont, CA.
Don & Connie Moore	Alameda, CA.
Tom & Sharon Mordini	Freeport, IL.
Alan & Lorraine Pickup	Hazelwood, MO.
Charles & Dorothy Propst	Osceola, IA.
Elvis Randell	Tulsa, OK.
Otis & Ferrill Jean Rice	Kaukauna, WI.
Fred G. Roque Jr.	Bloomington, CA.
Edward C. Stalder	San Diego, CA.
Floyd & Cecil Whitley	Houston, TX.
Floyd & Theresa Wright	Walnut Grove, MO.

This information is presented by the HEART OF AMERICA CARNIVAL GLASS ASSOCIATION for the educational benefit of its members.

Bob Grissom  
President

---

**49. Pattern: PLAIN / BASKETWEAVE (Three-Row-Open Edge)**

**Maker:** Fenton  
**Color:** Ice Blue (R)  
**Note:** Only one of these plates known.

**50. Pattern: BIRMINGHAM AGE HERALD / WIDE PANEL**

**Maker:** Fenton  
**Color:** Amethyst (R)

**51. Pattern: CAROLINA DOGWOOD / PLAIN**

**Maker:** Westmoreland  
**Color:** Marigold/Milkglass (R)  
**Note:** Only one of these plates known.

**52. Pattern: COLONIAL PANEL / PLAIN**

**Maker:** Imperial  
**Color:** Clambroth  
 Marigold  
 Red (R)  
**Note:** This plate usually has a Stretch appearance.

**53. Pattern: COBBLESTONE / ARCS**

**Maker:** Imperial  
**Color:** Amethyst (R)  
**Note:** Only one flat plate known. It is a pastel amethyst.

**54. Pattern: CORAL / BEARDED BERRY**

**Maker:** Fenton  
**Color:** Marigold (R)  
**Note:** It is possible for a green plate to exist since bowls are known in green.

**55. Pattern: DOUBLE STEM ROSE / PLAIN**

**Maker:** Dugan  
**Color:** White (R)  
**Note:** This is reported as a stemmed plate. It measures 1 7/16 deep on the inside.

**56. Pattern: ELEGANCE / PLAIN**

**Maker:** Unknown  
**Color:** Pastel Ice Blue (R)  
**Note:** The plate has a 3+ inch octagonal, 1/4 inch high, domed base. Only one plate known. One Ice Blue bowl also known.

**57. Pattern: PLAIN / FROSTED BLOCK**

**Maker:** U.S. Glass  
**Color:** Clambroth  
 White

**58. Pattern: GODDESS OF HARVEST / PLAIN**

**Maker:** Fenton  
**Color:** Blue (R)  
 Marigold (R)  
**Note:** Only one plate known in each color. A picture of this plate is not obtainable at this time; picture shown is of a bowl.

**59. Pattern: GRAPE & CABLE / MEANDER**

**Maker:** Northwood  
**Color:** Amethyst  
 Marigold  
**Note:** This plate is marked with the Northwood Trademark (N in a circle) and is Spatula footed.

**60. Pattern: GRAPE & CABLE / PLAIN**

**Maker:** Fenton  
**Color:** Amethyst  
 Blue  
 Green  
 Marigold  
**Note:** This plate is Spatula footed



49. PLAIN/BASKETWEAVE (Three-Row-Open Edge)



50. BIRMINGHAM AGE HERALD / WIDE PANEL



51. CAROLINA DOGWOOD / PLAIN



52. COLONIAL PANEL / PLAIN



53. COBBLESTONE / ARCS



54. CORAL / BEARDED BERRY



55. DOUBLE STEM ROSE / PLAIN



56. ELEGANCE / WIDE PANELS



57. PLAIN / FROSTED BLOCK



58. GODDESS OF HARVEST / PLAIN



59. GRAPE & CABLE / MEANDER



60. GRAPE & CABLE / PLAIN



**61. Pattern: GRAPE & CABLE / PLAIN**

**Maker:** Fenton  
**Color:** Amethyst  
 Blue  
 Marigold  
**Note:** This plate has the ball feet.

**62. Pattern: GRAPE & CABLE / BASKETWEAVE, Thin Ribbed or Plain**

**Maker:** Northwood  
**Color:** Amethyst Ice Blue (R)  
 Aqua Opalescent Marigold  
 Blue (R) Sapphire  
 Green Teal

**Note:** The plate shown in Photo 17 is the "Variant". Notice the leaves almost touch in the center of the Variant, the leaves of the normal Grape & Cable are not as close. These plates can be Plain or Stippled.

**63. Pattern: PLAIN / LOUISA**

**Maker:** Westmoreland  
**Color:** Amethyst  
 Green  
 Marigold  
**Note:** This is ball footed and this pattern usually seen in a Rosebowl.

**64. Pattern: PLAIN / LUSTRE & CLEAR**

**Maker:** Imperial  
**Color:** Marigold

**65. Pattern: ORANGE TREE WITH TRUNK / BEARDED BERRY**

**Maker:** Fenton  
**Color:** Amethyst  
 Blue  
 Green  
 Marigold  
 White

**Note:** The only difference between the Orange Tree (see photo 28) and this pattern is the trunk of the tree extends into the outer portion of the center of this plate, in four places.

**66. Pattern: PEACOCK TAIL / WIDE PANEL**

**Maker:** Fenton  
**Color:** Marigold (R)  
**Note:** This pattern often seen on different pieces, but a 9 inch plate is rare. Similar to the Nippon pattern, see picture 26.

**67. Pattern: PERSIAN MEDALLION / PLAIN**

**Maker:** Fenton  
**Color:** Blue (R)  
 Green (R)  
 Marigold (R)  
 White (R)

**Note:** This pattern often seen on different pieces, but 9 inch plates are rare. Only a few plates known in any color.

**68. Pattern: PETER RABBIT / BEARDED BERRY**

**Maker:** Fenton  
**Color:** Blue (R)  
 Green (R)  
 Marigold (R)

**Note:** Only a few plates known in any color.

**69. Pattern: PLAIN / RAYS**

**Maker:** Northwood  
**Color:** Blue Milkglass (R)  
**Note:** This has a Stretch Glass appearance.

**70. Pattern: RAYS & RIBBONS / CACTUS**

**Maker:** Millersburg  
**Color:** Amethyst (R)  
**Note:** One Amethyst plate reported, in the "Millersburg Research Notes" by Jack Wilson. Photograph shown is a bowl.

**71. Pattern: ROSILAND / WIDE PANEL**

**Maker:** Millersburg  
**Color:** Amethyst (R)  
 Green (R)

**Note:** The edge turns up slightly. Only about five of these known.

**72. Pattern: ROSE & GREEK KEY / ROSE AND GREEK KEY**

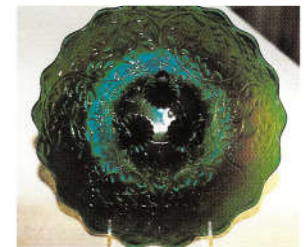
**Maker:** Unknown  
**Color:** Amber (Smokey)  
**Note:** Only one of these plates known. The backside pattern is the same as the frontside.



61. GRAPE & CABLE / PLAIN



62. GRAPE & CABLE / BASKETWEAVE, Thin Ribbed or Plain



63. PLAIN / LOUISA



64. PLAIN / LUSTRE & CLEAR



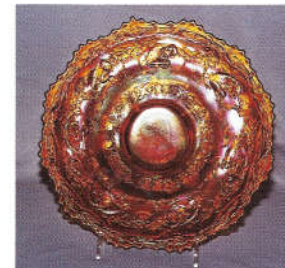
65. ORANGE TREE WITH TRUNK / BEARDED BERRY



66. PEACOCK TAIL / WIDE PANEL



67. PERSIAN MEDALLION / PLAIN



68. PETER RABBIT / BEARDED BERRY



69. PLAIN / RAYS



70. RAYS & RIBBONS / CACTUS



71. ROSILAND / WIDE PANEL



72. ROSE & GREEK KEY / ROSE AND GREEK KEY



**73. Pattern: SEAWEED/WIDE PANEL**

**Maker:** Millersburg  
**Color:** Green (R)  
 Marigold (R)

**Note:** The edge turns up slightly. Only a few of these plates known in either color.

**74. Pattern: SMOOTH RAYS / PLAIN**

**Maker:** Imperial  
**Color:** Marigold  
 Smoke

**75. Pattern: SMOOTH RAYS / PLAIN**

**Maker:** Imperial  
**Color:** Clambroth

**76. Pattern: STAG & HOLLY / PLAIN**

**Maker:** Fenton  
**Color:** Amethyst (R)  
 Marigold (R)

**Note:** This plate is Spatula Footed. This pattern seen more often in the Chop plate (10+ inch).

**77. Pattern: PLAIN / SWIRL RIB**

**Maker:** Imperial  
**Color:** Marigold

**78. Pattern: TROUT & FLY / WIDE PANEL**

**Maker:** Fenton  
**Color:** Amethyst (R)

**Note:** This pattern usually seen in bowls. Only 2 plates are known. Picture shown is of a bowl. No plate picture available.

**79. Pattern: TWO FLOWER / PLAIN**

**Maker:** Fenton  
**Color:** Marigold (R)

**Note:** This plate measures 9+ inches across. This pattern usually seen in bowls, plates are rare.

**80. Pattern: VINTAGE / PLAIN**

**Maker:** Dugan  
**Color:** Marigold (R)

**Note:** This plate has a pedestal base. This pattern is different from the Fenton Vintage pattern, see No. 47 plate picture.

**81. Pattern: WINDFLOWER / PLAIN**

**Maker:** Dugan  
**Color:** Amethyst  
 Blue  
 Green  
 Marigold



73. SEAWEED/WIDE PANEL



74. SMOOTH RAYS / PLAIN



75. SMOOTH RAYS / PLAIN



76. STAG & HOLLY / PLAIN



77. PLAIN / SWIRL RIB



78. TROUT & FLY / WIDE PANEL



79. TWO FLOWER / PLAIN



80. VINTAGE / PLAIN



81. WINDFLOWER / PLAIN