

*Shape Series*  
**Heart of America  
Carnival Glass  
Association**  
September 2001

**Goddess of Harvest** There are no more than 10 pieces known with this pattern. So if you have one with any edge, (CRE, ruffled, ice cream shape, or 3-in-1) you have a very rare piece. Even with this pattern being so rare, it is known in marigold, blue, and amethyst and the four different edges. Two plates have been reported. Have you ever seen a plate?

## Ribbon candy edges

*by Bob Grissom*

Candy ribbon edge (or ribbon candy edge), resembles the ribbon candy often found during the Christmas season. This deep, tight, uniform edge is found only on Fenton eight to ten inch bowls. The shallower crimped edges referred to as tight crimp (or fine crimp) were used by Fenton, Dugan, Millersburg, and Northwood on bowls, pitchers (bulbous type), vases, compotes, and hatshape pieces.

Fenton bowls with this edge treatment were only shown in Butler Brothers catalogs for four years, 1909, 1910, 1911 and 1912. Consequently, one could assume the edge treatment was not popular. It is not a favorite shape for some collectors because the crimp tends to obliterate some of the pattern on many of the pieces.

To quote from Frank Fenton: "It's actually a difficult shape to make. It's hard to flare it out, have sides turn up the way most of them do, and still have the piece look like it's round. It's hard to keep the shape. That may contribute to the reason that it's not used very often."

Continued inside



Continued front front

If the glass worker did not place the piece on the crimping tool correctly it would be a reject as it would not be symmetrical. There were a lot of ways to make rejects when attempting to make pieces with this unusual edge.



**Wild Blackberry** Another Fenton pattern that is not easily found in any shape or color. The CRE is particularly scarce and has been reported only in green.



**Concord** Made in bowls and plates. Bowls are normally ruffled or 3-in-1 edges, the CRE is very difficult to find. Most of the Fenton patterns were made in cobalt blue, but this pattern is scarce to rare in blue.



**Feathered Serpent** This Fenton pattern was made in the large (9-10 inch) and smaller sauce type bowls. Only the large bowls are known with the CRE. This pattern is not plentiful in either of the bowl sizes. This and the Ten Mums bowls are the larger bowls with the CRE.



**Holly** One of the more common Fenton patterns. Bowls with the ruffled, 3-in-1, and ice cream shape are seen often, but those with ribbon candy edge are not easy to find. The plates and especially bowls can be found in most all of the Fenton colors.

**Other patterns** In addition to the Fenton patterns shown here, the ribbon candy edge has also been found on Autumn Acorns, Persian Medallion, and Coin Dot.



**Vintage Bowls** in this pattern are common and were made in ruffled, 3-in-1, ice cream shape, and ribbon candy edges. Occasionally bowls with this pattern are found in aqua opal and red but only one aqua opal bowl with ribbon candy edge (right) is known. The bowl from the Vintage fernery (above) with ribbon candy edge is quite rare and plates and ruffled bowls from the fernery are known.



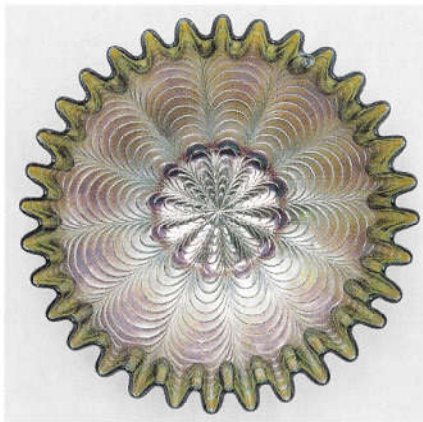
**Ribbon Tie** This pattern is not found very often with the ribbon candy edge. The usual edge shapes are ruffled and 3-in-1. The pattern was only used on plates and bowls.



**Thistle** Bowls with the ribbon candy edge were shown in the Mid-Spring 1911 Butler Brothers catalog. Only bowls and plates are known in this pattern.



**Peacock and Grape** Bowls with the CRE are very hard to find (although one collector had these in marigold, amethyst, and peach opal). This pattern is only found on bowls and plates, with either the collar base or spatula feet.



**Peacock Tail** Bowls (8 to 9 inches) come in ruffled, ICS (round), 3-in-1 and ribbon candy edge. Bowls with the ribbon candy edge are the most difficult to find. Only amethyst, green, and marigold bowls with the ribbon candy edge are known.



**Ten Mums** This bowl with the ribbon candy edge is larger, 9 to 10 inches. The crimps are very deep and usually go into the pattern.



**Birds & Cherries** Bowls (and plates) are very rare in this pattern—even more so with the ribbon candy edge. One sold at the 1999 Bob Gallo auction. Another sold at a Woody Auction in 2001. A third one sold at the ACGA convention auction in 2001.



**Hearts and Vine** This pattern with the ribbon candy edge was shown in the Butler Brothers 1910, 1911, and 1912 catalogs—but not in later catalogs.

Glass courtesy of Cliff and Joanne Ball, Diane Beitz, Bob Grissom, Bill and Sharon Mizell, Tom and Sharon Mordini, Randy and Jackie Poucher, and Carl and Ferne Schroeder.

Photographs © David Doty