

ABOUT THOSE BON-BONS---
By Diane Fry



"GOLDEN GLOW" ASSORTMENT
Ideal for souvenirs or premium purposes. Both useful and ornamental

C2404—Equally asstd. golden (light) and royal (dark) iridescent glass, floral, fruit and fancy paneled designs. 1 doz. each of the following pieces:

7 in. tulip bonbon dishes.	7 in. 3 footed crimped nappies.
5 1/4 in. footed compots.	7 1/4 in. crimped footed nappies.
6 in. high footed crimped compots.	8 in. flared fancy plates.
7 1/4 in. crimped violet vases.	10 in. fancy flower vases.
6 1/2 in. flared footed bowls.	7 1/4 in. tulip bonbons.
6 in. square double handled bonbons.	5 1/4 in. high footed crimped compots.

Assorted 12 doz. in bbl., 122 lbs. Doz **95c**
(Total \$11.40)



"MARVELOUS" ASSORTMENT
Big fancy pieces that will be a wonderful attraction in your store

C2418—Fine quality glass bodies, rich embossed floral, leaf, fruit and conventional designs, golden and royal blue iridescent finished in fired colors. 1/2 doz. each of the following:

8 1/4 in. crimped salad dish.	9 in. crimped edge fruit bowl.
6 in. double handled compartment nut or candy dish.	8 in. 3 footed fancy bonbon.
8 1/4 in. flared fruit bowl.	6 1/4 in. extra deep 3 footed bowl.
11 1/4 in. rustic flower vase.	8 in. crimped 3 footed fancy fruit bowl.
9 in. double handled fancy bonbon.	12 in. tall ribbed vase.
8 1/4 in. shallow footed salad dish.	8 1/4 in. deep footed fruit bowl.

Assorted. 4 doz. in bbl., 78 lbs. Doz **\$2.00**
(Total \$8.00)

These reprints of assortments of Fenton Glass taken from the 1925 Butler Bros. Catalog refers to them as "square" bon-bon, the open end or "card tray" shape as 9" fancy bon-bon. It's interesting that the Two Fruits bon-bon is called a "double-handled compartment nut or candy dish."

However, I'm sure we shall all agree that Fenton dominated the bon-bon field with 19 or so contributions. Northwood made 4 significant entries, Millersburg 3, with Fostoria and Imperial coming along with a couple each.

To qualify and establish appropriate status to this distinct and graceful shape we know as true bon-bon is not a simple task.

We have some 30 patterns overall, 14 of which specifically appear only on the two-handled, collar-base bon-bon.

continued-

With regard to the desirability and affordability of these bon-bons, let us continue to list another ten, some of which you may feel should be among the TOP TEN.

The differences of opinion we share as collectors affords endless hours of pleasant but inconclusive discussion. It's all part of the fun.

What all this comes around to: One of the most desirable shapes is yet available for reasonable and collectable prices, with the end result of owning a true rarity.

Are there more rare patterns in bon-bons than in bowls? I shall leave this for you to decide.

THE SECOND TEN

- #1 PRAYER RUG (Fenton) Usually found in sq. shape. Rarely available and only in marigold iridized custard.
- #2 POND LILY (Fenton) One ice green example is known. White is exotic and the green, blue, and mgld. are beautiful, as well.
- #3 ILLUSION (Fenton) Square or card tray shapes. Found in blue and marigold.
- #4 BUTTERFLIES (Fenton) 8 lovely butterflies poised on square or card tray shapes. Found in white, ameth., cobalt, green & mgld.
- #5 HOLLY SPRIG (Millersburg) Available in Ameth., green, and marigold. Some mgld. have Isaac Benesch adv. on collar base. Any color is difficult to locate.
- #6 GRAPE/CABLE (Northwood) One is known in Peach Opal. An Aqua Opal sold in 3/92 for \$3600. Available in green, blue, white, mgld.
- #7 PERSIAN MEDALLION (Fenton) A celeste blue might sell in the \$1,000 range. The red is a dark or brick red and sells in the \$900-1,000. category. Can be found in many other Fenton colors.
- #8 LOTUS & GRAPE (Fenton) A red-amberina sold 2/92 for \$1200. An aqua brought \$250. This bon-bon can be found in vaseline, blue, green and marigold.
- #9 BIRDS & CHERRIES (Fenton) Can be found in green, blue, marigold and amethyst, with ameth. probably the most evasive.
- #10 CAPTIVE ROSE (Fenton) These seem fairly scarce in any color. Occasionally an ameth. or blue turns up at auction.

continued-

I would like a red, aqua, and white Captive Rose--in that order. Should any of you locate one or all these colors, I will be delighted to hear of your good fortune!

Recapping somewhat: The exterior of Cherry Circles, Strawberry and Two Fruits Divided are all smooth.

I have thoroughly enjoyed researching and developing this information. John Britt's Educational Series I, Heart of America Carnival Glass Assoc. book shed a great light on the subject of bon-bons, along with his personal views during our discussions from time to time.

The Mordini Auction Result guides provide a valuable price history for such a study as this, along with materials written over the years by collectors of long standing with accumulated information.

My extreme appreciation for their personal input goes to Larry Keig, Don Kime, Marie McGee, Jerry Reynolds, Betty Robertson, Fred & Cathy Roque, Jim & Jan Seeck, Tom Sprain, Harold Wagner, and Gail Westphall.

It is my sincere hope that your future search for the much neglected, beautiful shapes and colors of bon-bons will be enhanced through a new and different approach to their desirability.

If there is contrary opinion or pertinent information on the subject of bon-bons, we will appreciate hearing from you, so that prices and other accumulated data may be updated. Willingness to share, among the Carnival Family has always been a mainstay to the collectability and strength of values associated with our beloved glass. That quality is a Tribute to the character of the collectors as a group. We are devout and intense in our preservation of these chosen pieces of AMERICANA!

In my attempt with rating the TOP TEN, I truly believe that the only justifiable means of doing so, is to classify those having patterns which appear only on the bon-bon shape. These must be given priority, regardless of scarcity or rarity of any given color.

Exotic, trendy colors and elevated prices do not in and of themselves designate a rarity. Desireability better describes such a state of affairs, followed by willingness to conduct the required "bidness" toward obtainability.

Rarity, in the true sense of the word, stems from scarcity of pattern or shape, or in some cases, color by virtue of limited quantity available.

THE TOP TEN

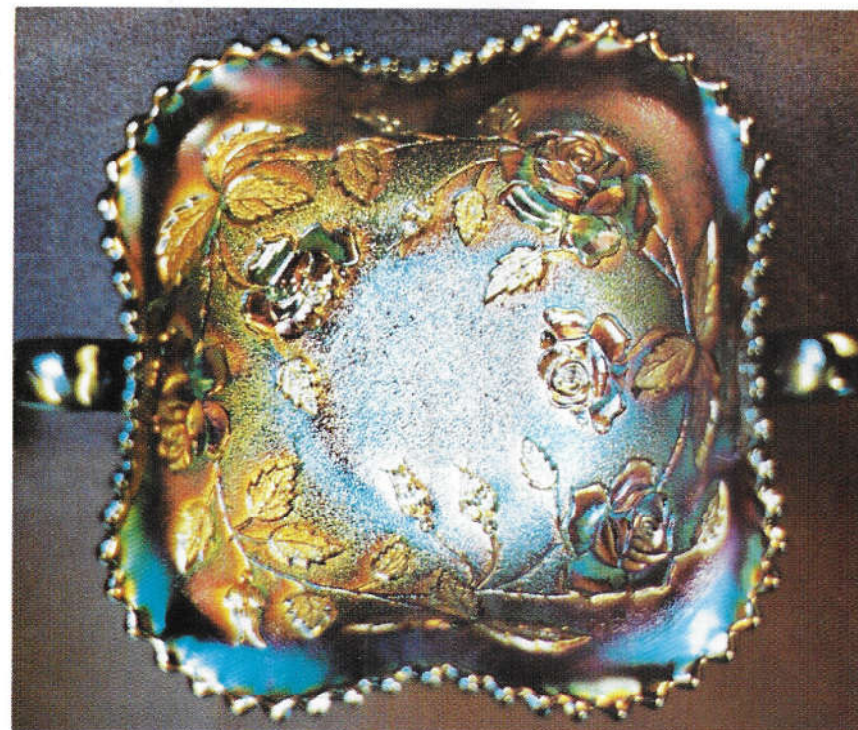


#1 ROSE BOUQUET
(Fenton) Has only been found in white. Sharon Mordini aptly named this bon-bon a few years ago. One sold for \$150. at a Mich. Cooper sale in 9/89. One sold in the 8/91 Britt auction for \$375. Exterior is plain. Note the full blown rose in center. This is an extremely rare bon-bon, quite lovely and desireable.



#2 LOTUS LAND
(Northwood) Three known in Ameth., all the square type. One sold in 6/87 for \$1150. The only known mgld. example is card tray shape. It sold in the Don Moore auction, 4/92 for \$1400. Extremely rare in color and quantity availability. continued-

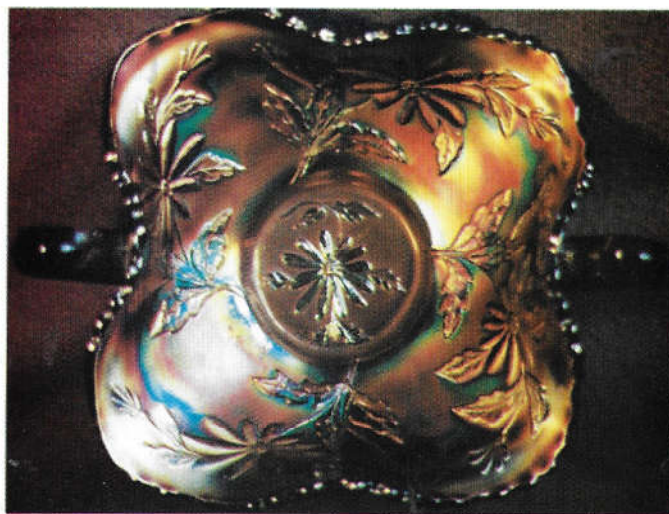
#3 BASKET OF ROSES (Northwood)



Tom Sprain applied this appropriate name in the mid-'70's. It was unlisted at the time and even now, only mentioned in John Britt's book. He notes "about a dozen" of the purple ones. These may be stippled or unstippled. This pictured example in purple brought \$300. at the 3/92 Vining sale. A mgld. sold for \$200. in 11/89. A stippled mgld. in this years ICGA sale brought \$325. and the unstippled purple sold for \$275. These are quite rare in either color and a REAL "standout" in the bon-bon category! -A definite plus in any collection.



#4 TRACERY
(Millersburg) Probably more difficult in the square shape. An ameth. oval shape brought \$550. & a square green one brought \$675 @ the 9/91 Britt auction. Cannot confirm a mgld. The pattern is exquisite and there are not nearly enough to supply the demand.



#5 DAISY
(Fenton) Seldom seen. No more than 1 blue example per year seems to surface at auction, usually bringing in the neighborhood of \$200-250. Marigold has been reported but none have been sold at auction during record-keeping years since 1983.



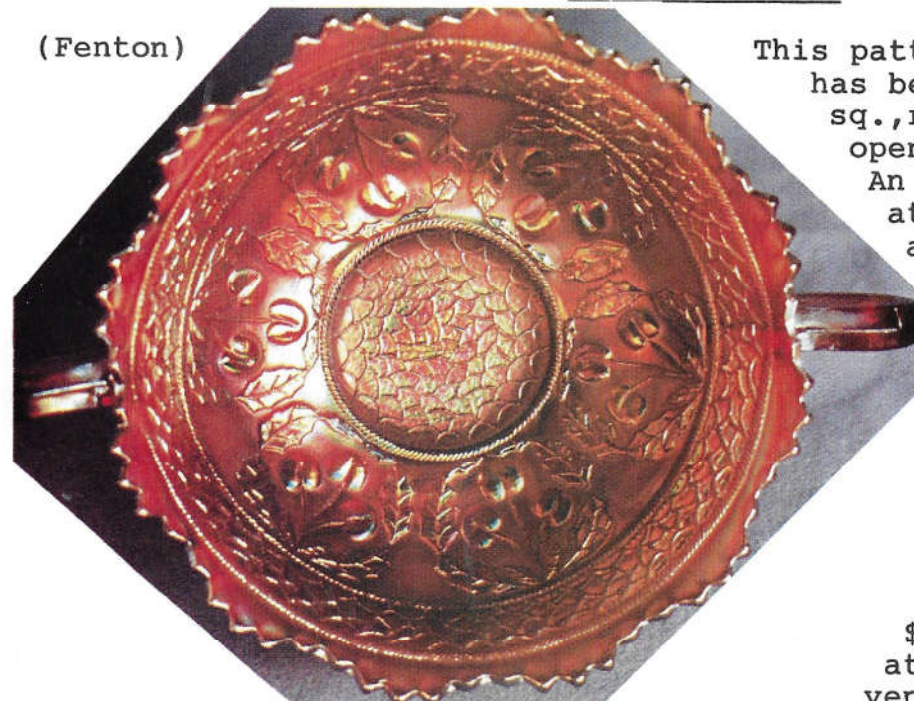
#6 NIGHT STARS
(Millersburg) Only known card tray shape in Vaseline sold 3/91 for \$625. A green one in that same auction went for \$525. Five Marigold examples have been confirmed. One sold privately-6/92 for \$1200. Usual shape of Night Stars is deep, ob-long, stippled, with an air of elegance.

This is a good place to discuss the exterior of these first six bon-bons. Rose Bouquet has the typical rounded, smooth handles, with no pattern on the exterior. Lotus Lands have the usual slightly ridged handles, with no back pattern. Basket of Roses has ridged handles, Northwood basketweave exterior and marked N. The Tracerys I have seen have a smooth exterior. Daisy and Night Stars both have panelled exteriors. Now, you can be looking for DIFFERENT exteriors.

continued-

CHERRY CIRCLES

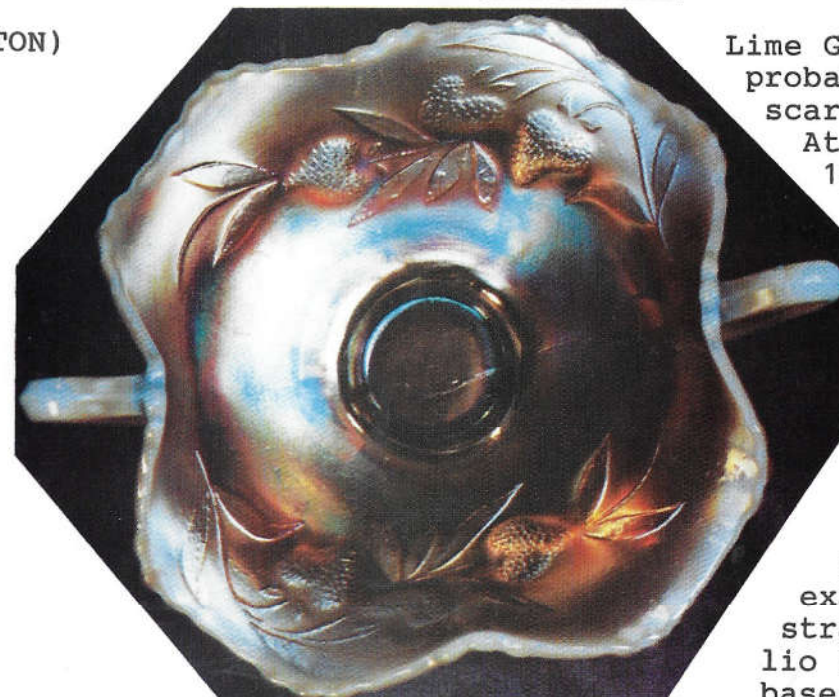
(Fenton)



This pattern has been found in sq., round, and open end shapes. An ice blue sold at auction, an aqua one sold for \$200. in 8/91. The blue would likely bring \$100 or more. A mgld. sold in 5/91 for \$30. Six or eight red ones exist. One of these brought \$7,250. in 4/92 at the HOACGA convention auction.

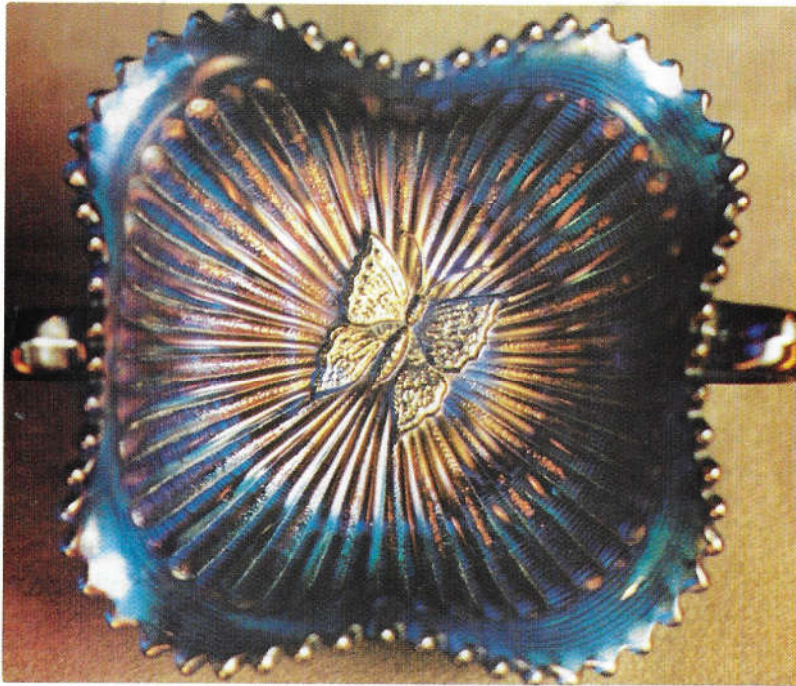
#8 STRAWBERRY

(FENTON)



Lime Green Opal is probably more scarce than red. At auctions in 1990, a LGO sold for \$700., a red for \$375. Amberina will bring around \$350. It is available in amber, ameth. vaseline, green, blue, and mgld. Some marigold examples have a strawberry intaglio in the collar base. continued-

#9 BUTTERFLY (NORTHWOOD)



The smooth back examples appear in mgld., blue, green, purple, with 1 true smoke known. These range from \$100-\$350. Occasionally an ameth. is found with Horlacher adv. on the base. These have brought \$100-\$150. The more rare threaded back is found in green, elec. blue, & purple. These will generally sell in the \$400-\$600. range. One of the 2-3 known ice blue sold for \$1600. in 3/89.

#10 TWO FRUITS (Fenton)



This is the divided, round bon-bon. Usually has strong color and iridescence. It is quite unusual in overall design and is seldom seen. Ameth. is the more difficult color to locate. A blue one would sell in the \$100 range with marigold close behind.