

MILLERSBURG RESEARCH NOTES

Dedicated to the many people who have contributed to the field of Carnival Glass literature; their unselfish sharing of knowledge has made the hobby easier and more enjoyable for all.

COPYRIGHT 1982
All Rights Reserved

JACK D. WILSON

BLUE BASE GLASS - A COLOR RARITY

by JACK D. WILSON

Almost all Millersburg carnival glass was made in the distinct light clear shades of amethyst, marigold and green. While some of these colors are quite scarce in certain patterns (this will be covered in later articles), all of these base colors are much easier to find than a piece of blue Millersburg. Many carnival collectors have never seen a piece of blue Millersburg and even in collections that have specialized in this glass, the blue pieces are few and far between. I would rate any known Millersburg pattern in blue as rare and most of the blue pieces as very rare.

A good price guide to follow is that a piece of blue Millersburg at a green or amethyst price is a bargain (not that you will have many chances to buy blue pieces, but be prepared). Actual value of blue pieces range from 3 to 5 times the dark price. This holds true except for extreme rarities such as the Peoples vase, here rarity, not color determines the price.

The following is a list of pieces known to be made by Millersburg in blue. Most of these pieces I have seen, but some are only reported (see notes). In almost all cases, I have only heard of a very few examples per pattern (see notes).

<u>PATTERN</u>	<u>AVAILABILITY</u>	<u>NOTES</u>
BERNHEIMER Advertiser bowl	Rare	Most (if not all) were made in blue; high desirability keeps the price of these high.
BLACKBERRY WREATH		
Small 7" ruffled bowl	Very rare	
Large ruffled bowl	Very rare	1 reported
Large ice cream bowl	Very rare	5 or 6 known
CHERRIES		
Small 6" ruffled bowl	Very rare	2 known
Small 7½" bowl	Very rare	1 known
Table set	Very rare	Partial set reported
CHERRIES/HOBNAIL BACK		
Bowl	Very rare	2 reported
DEEP GRAPE compote	Very rare	
HOBSTAR & FEATHER punch cup	Very rare	1 cup known
HOBNAIL		
Water pitcher	Very rare	
Tumbler	Very rare	
Table set	Very rare	
MANY STARS bowl	Rare	Probably 6 - 12 known.
MULTI FRUITS & FLOWERS		
Punch set	Very rare	1 complete set with 6 punch cups known and some odd punch bases.

BLUE BASE GLASS - CONTINUED

<u>PATTERN</u>	<u>AVAILABILITY</u>	<u>NOTES</u>
NESTING SWAN bowl	Very rare	1 known
OHIO STAR vase	Very rare	A pair reported stolen from the Hartung collection.
PEACOCK, MILLERSBURG		
Small 6" bowl, round	Very rare	1 known
Small 6" bowl, ruffled	Very rare	
Bowl 9", six ruffles	Very rare	1 known
Bowl 10", ruffled, satin	Very rare	2 known
Bowl 10", ruffled, radium	Very rare	1 known
PEOPLES vase	Very rare	1 known, 2nd reported in Ohio, not confirmed.
PRIMROSE bowl	Very rare	1 known
SEAWEED		
Large ice cream bowl	Very rare	1 known
VINTAGE/HOBNAIL back		
Large ruffled bowl	Very rare	1 known
Small (sauce) bowl	Very rare	2 known
WHIRLING LEAVES		
Bowl	Very rare	1 known
TROUT & FLY		
Bowl	?Very rare?	An old time carnival collector reported that he once owned two Trout and Fly bowls in blue but got rid of them because he did not like the iridescence. He is from an area where these bowls are prevalent and still has several in other colors in his collection!

Originally published July, 1976
 Revised February 1, 1978
 Revised February 1, 1982

VASELINE & WHITE BASE GLASS

by JACK D. WILSON

In the first article in this series, I discussed blue base glass pieces as color rarities in Millersburg glass.

Millersburg also made vaseline and, possibly, white carnival, but these pieces were made in extremely limited numbers; my guess is that they were experimental or a mistake in glass mixing. How rare are these colors? I had collected over 200 pieces of Millersburg before I was lucky enough to purchase my first piece of vaseline. White may or may not have been made.

Definition of colors:

Vaseline - This color is quite different than in pressed glass. Pressed glass vaseline is much more greenish than examples found in carnival. Vaseline in carnival is a basically marigold base color that has a distinctive greenish tint. Normally, examples of Millersburg vaseline have very good deep marigold iridescence. Also vaseline will fluoresce under a black light.

White - White is a clear base glass with white iridescence. Good white pieces are "frosty" and the more "frosty" they are, the better the piece.

Pieces known in Vaseline:

<u>PATTERN</u>	<u>AVAILABILITY</u>	<u>NOTES</u>
ACORN compote	Very rare	2 compotes known; one sold for \$1900 in 1981.
BIG FISH	Very rare	2 bowls known
COUNTRY KITCHEN	Very rare	Covered sugar only piece known
GRAPE LEAVES bowl	Very rare	One of the hardest Millersburg patterns to find; do <u>not</u> confuse with GRAPE WREATH. 1 bowl known.
HOBSTAR & FEATHER		
Punch bowl base	Very rare	1 known: where is the top?
Sugar bowl lid	Very rare	1 known; where is the base?
NESTING SWAN bowl	Very rare	1 bowl known
NIGHT STARS card tray	Very rare	1 known - exquisite!
PEACOCK, MILLERSBURG	Very rare	1 tri-cornered bowl
	Very rare	1 giant rose bowl
STRAWBERRY compote	Very rare	1 known
WHIRLING LEAVES	Very rare	1 bowl known
WILD FLOWER jelly compote	Very rare	1 known
RAYS & RIBBONS ruffled bowl	Very rare	1 known

VASELINE & WHITE BASE GLASS - CONTINUED

Pieces known in White:

<u>PATTERN</u>	<u>AVAILABILITY</u>	<u>NOTES</u>
OHIO STAR vase	Very rare	Reported by Mrs. Hartung in her book as "a frosty white." The vase was from Marshall Shafer. I have never been able to confirm that this does exist.

Originally published October, 1976
Revised February 1, 1978
Revised February 1, 1982

PATTERNS WHICH ARE NOT MILLERSBURG

by JACK D. WILSON

This article is an attempt to identify patterns that have been attributed to the Millersburg Glass Company but were not made at Millersburg.

O. Joe Olson blazed the trail in trying to identify patterns made by Millersburg. Two articles published by him were "Millersburg Carnival" (6/10/67 issue of *THE CARNIVAL GLASS NEWS*) and "Millersburg Special" (1/73 issue of *THE CARNIVAL GLASS NEWS & VIEWS*). In 1975, Bill Edwards' book *MILLERSBURG, THE QUEEN OF CARNIVAL GLASS* was published by Collector Books. This was the first carnival glass book to deal with the Millersburg Glass Company exclusively.

Millersburg was the shortest lived of the four major producers of old carnival glass. Research concerning this company has been difficult because factory records and catalogs are almost nonexistent (a future article in this series will cover the records that do exist). Fenton and Imperial are still in business and a researcher can visit these factories and review old records (as was done for one of the stretch glass books). Northwood marked some of their glass and many ads have turned up in old trade journals that have helped to identify many Northwood patterns. The last way of identifying patterns is through "digs" at old plant sites. Many "digs" have been done at various Northwood plant sites and this has contributed to the identification of Northwood patterns. Most of these avenues have been closed to the researcher of Millersburg and this has resulted in some false starts and several patterns that have been attributed to Millersburg, but were not made there.

Research, in the purest sense, is the steady distillation of accumulated knowledge. It should always be conducted with a guard against subjectivity clouding the conclusion. Most of my conclusions are based upon very solid evidence, but some are not. I felt an obligation to the many collectors interested in Millersburg to state my opinion in those cases where I do not yet have conclusive proof.

PATTERN NAME	NOTES/COMMENTS
ACANTHUS	Identified by Edwards as Millersburg, but actually made by the Imperial Glass Company. Conclusive proof is contained in an article by Russell & Kitty Umbraco published on pgs. 33-35 of the 12/30/75 issue of <i>THE ANTIQUE TRADER WEEKLY</i> *. I became very suspicious of this pattern after seeing a flat plate on smokey base glass, an unknown color for Millersburg, but one of the known Imperial colors.

PATTERNS WHICH ARE NOT MILLERSBURG - CONTINUED

PATTERN NAME	NOTES/COMMENTS
AGE HERALD	Identified by Edwards and Olson as Millersburg but, in my opinion, made by Fenton. Close comparison will reveal that the same back pattern (Wide Panel) and iridescence is used on this pattern and the Autumn Acorns bowl. If you place these two side by side and closely examine the exterior, the conclusion has to be that they were made by the same company.
BANDED DIAMONDS	Identified by Edwards as Millersburg but, in my opinion, made in Australia (Crystal Glass Company). Pictures of a complete 7 piece marigold water set and an amethyst water pitcher were recently seen by the author (these pictures were from Australia).
BROOKLYN BRIDGE	Identified by Edwards as a questionable pattern he felt was made by Millersburg. It is rare and desirable, but it is my opinion this was not a product of Millersburg. Current evidence points to Northwood (see PONY).
CHRISTMAS COMPOTE	Known only in marigold and purple. The base glass and iridescence are not what you would expect from Millersburg. I am of the opinion this pattern was made by Northwood or maybe by Imperial, but certainly not by Millersburg.
COSMOS VARIANT	I agree with Edwards; this was made by Fenton.
CHECKERBOARD	Two amethyst water pitchers, some amethyst tumblers, one marigold tumbler and some wines are known in this pattern. This is a very rare and desirable pattern, but was made by Westmoreland.
DIVING DOLPHINS	The <u>bowls</u> with 3 dolphin feet and the Scroll Embossed interior pattern were made by Imperial. Do not confuse these bowls with the very rare <u>compote</u> also with three dolphin feet that rests on a <u>round plate base</u> and has a <u>Rosalind</u> interior. The latter was made by Millersburg and I have seen these in amethyst and green (with marigold reported).
FEATHERED SERPENT	Made by the Fenton Glass Company**.
FLUFFY PEACOCK	Made by the Fenton Glass Company**.

PATTERNS WHICH ARE NOT MILLERSBURG - CONTINUED

PATTERN NAME	NOTES/COMMENTS
FOUR FLOWERS (VARIANT)	Edwards lists this as a questionable pattern that he would not attribute to Millersburg. I do not think Millersburg made it either. It should be noted that this pattern can be found on some very unusual base colors such as true lavender and a teal green.
FRUIT SALAD	A very interesting punch set that can be found in marigold, peach opal and amethyst (in order of decreasing availability). This set is very close, in many respects, to the Orange Peel pattern and I am of the opinion both are the products of the Westmoreland Glass Company.
FLUTE #3	Identified by several authorities as a product of Millersburg. It was actually made by Imperial. Identified by reprints of original Imperial catalog pages*.
GARDEN PATH (VARIANT)	Not Millersburg; it is Diamond/Dugan.
GOLDEN GRAPES	How this was attributed to Millersburg is a mystery to me. It lacks the fine iridescence, the light clear base glass that are normally found. Not made by Millersburg.
HEAVY GRAPE (COMPASS BACK PATTER)	This is a very scarce pattern that is seldom seen. I have wondered many times about this pattern but finally decided the iridescence (heavy) and the base glass (dark purple/amethyst) were more typical of Diamond/Dugan.
HONEYCOMB Rosebowl	Not Millersburg.
IRIS	The IRIS compote is now known to be a Fenton product. This is confirmed through Butler Brothers catalog groupings and by Frank Fenton. However, the Buttermilk goblet may or may not be Fenton. Examination of the goblet will show much thicker glass was used than in the compote.
JARDENIERE	A Fenton product.
LEAF SWIRL	Listed by Edwards as a Millersburg product. This pattern can be found in true amber, a teal green and amethyst. These are unusual (except for amethyst) base colors for Millersburg. A product of Westmoreland Glass Company.

PATTERNS WHICH ARE NOT MILLERSBURG - CONTINUED

PATTERN NAME	NOTES/COMMENTS
MILLERSBURG FLUTE	More properly labeled as Imperial Flute (see FLUTE #3). These punch sets <u>are not</u> Millersburg.
PINWHEEL VASE	These vases come in at least three sizes and are normally found in marigold, although amethyst does exist. Edwards lists this as a Millersburg pattern. It is my opinion that this was the product of an English glass company.
PONY	This pattern can be found on marigold, amethyst, aqua, blue and ice green base glass. This was a Northwood product.
PUZZLE	This compote has been nominated by some as a Millersburg product. I find nothing to support this.
PRISMS	Edwards lists this as Millersburg. I would list this compote as a product of the Westmoreland Glass Company.
QUILL	The rare water set is found in marigold and purple only. Some collectors have nominated this as a Millersburg product. I have seen pitcher on blue pressed glass with gold decoration (not iridized) which would point to Northwood.
SWEETHEART	Edwards lists this as a questionable pattern that he felt was made by Millersburg. Two of these rare cookie jars are known in green and one in marigold. They were a product of the Cambridge Glass Company and are listed in old catalog reprints in two sizes in clear pressed glass***.
VENETIAN	This giant rose bowl is known in green and marigold (marigold is rarer). In many ways it resembles the Millersburg Hobstar & Feather giant rose bowl. I have always had my doubts about this pattern and they were confirmed when I saw a Cambridge catalog reprint that listed this item (in clear and in two different sizes) as a lamp base***.

* This article includes reprints of several pages of Imperial catalog 103-B.

** Originally determined to be Fenton products by Rose Presznick while researching original Fenton records at the Fenton factory for an unpublished book on the Fenton Glass Company.

*** Thanks to Jack & Mary Adams for showing me the Cambridge catalog reprints.

Revised Feb. 1, 1982

PATTERNS MADE BY MILLERSBURG

by JACK D. WILSON

The previous article in this series discussed patterns which have been attributed to Millersburg but were not made by them. This article will list all the patterns which, in my opinion, were made by Millersburg.

The format of the tabulation that follows will list:

- 1) PATTERN NAME is Hartung unless otherwise specified. In those cases where Hartung uses Millersburg as part of the pattern name* the Millersburg has been dropped. In other cases a great deal of confusion exists with Hartung names and the name used by most collectors has been selected (i.e., Multi Fruits and Flowers is used rather than Many Fruits).

- 2) Shapes known.

- 3) Colors known:

A = Amethyst
G = Green
M = Marigold

B = Blue
V = Vaseline
W = White

A small "x" under the color column indicates I have seen the piece (in person or a good picture of it); a large "X" under the color column indicates that this is the hardest color to find; a "R" under the color column indicates the piece has been reported, but I have not seen it; and a "?" under the color column indicates I think the piece was probably made in this color but I have heard of no examples.

- 4) NOTES/COMMENTS should be read carefully. These represent the result of years of research. I have visited many collections, talked to many collectors and assembled, sifted, and qualified much information to come up with the notes.

As you review this article, please note any errors you detect. If you know a shape or color that I have not listed, I would appreciate it if you would drop me a line about it. This tabulation was done to aid many collectors and it will only get better if many collectors help in its review.

*Millersburg's Acorns
Millersburg's Big Fish
Millersburg's Court House
Millersburg's Gay Nineties
Millersburg's Grape Leaves

Millersburg's Heavy Grape
Millersburg, Marilyn
Millersburg, Wild Flower
Vintage, Millersburg

PATTERNS MADE BY MILLERSBURG - CONTINUED

PATTERN NAME Shapes known	A G M B V W	NOTES/COMMENTS
ACORN Compote	x x ? X	Rare (as are most Millersburg compotes).
BERNHEIMER Bowl only	R x	Rare. Edwards reports seeing a color slide of an amethyst bowl.
BIG FISH Bowl only	x x x X	Rare. Much harder to find than Trout & Fly. Can be found in several shape and edge variations but all from the same mold.
BIG THISTLE (unlisted) Punch set	x	Only 2 punchbowls with bases are known. No cups have been reported. Each of these punchbowls is slightly different. The one sold at the Wishard auction has straight sides (as it came from the mold). The second one has the top of the punchbowl flared out. An entire article could be written on this pattern, but space limits me to say this is one of the top Millersburg rarities.
BLACKBERRY WREATH Bowl 5" Bowls 8" to 10" Spittoon (whimsey)	x x x X x x x X ? ? x	The differences between Blackberry Wreath, Grape Wreath, and Strawberry are not that much (Berry Wreath might be a better name), but I will stick to the names used by Edwards rather than cloud the picture. The round blue ice cream bowl is a real find. I know of 3 examples of the spittoon whimsey in marigold.
Plate (flat) 6" Plate (flat) 8" Plate (chop)	x ? x x x x	Very rare; 6 marigold, 5 amethyst. 1 known in green. Very rare; have seen 1 marigold, 1 amethyst
BOUTONIERE Compote	x x x	Pretty compote.
CHERRY, MILLERSBURG Bowl 4" sauce Bowl 6" round, low Bowl 9"	x x x X ? x x ? x ?	Have seen 2 of the blue sauces. Not low enough to be a plate. A very scarce size.

PATTERNS MADE BY MILLERSBURG - CONTINUED

PATTERN NAME Shapes known	A G M B V W	NOTES/COMMENTS
CHERRY, MILLERSBURG - Continued		
Bowl, large	x x x	Can be found round or fluted; also comes on aqua base.
Bowl, Hobnail back	x R x ?	Very rare; usually a "sleeper".
Sauce, Hobnail back	x	1 known.
Large compote	x x x X	Very rare, few collectors have seen this.
Large compote-whimsey	x R	Probably unique, top shaped like a banana boat, pictured in Edwards' book.
Milk pitcher	x x X	Rarer than the water pitcher.
Plate (flat) 6"	? ? x	A very rare item, know of only 5.
Plate (flat) 9"	R	One example reported, a rare size.
Plate (flat) chop	R x x	Extremely rare, a top item.
Powder jar	R x	Extremely rare, a gem in any collection.
Table set (4 pieces)	x x x R	The blue table set would be a find.
Tumbler - flared sides	x x x	See Owens' book for illustrations of the two tumbler variations.
Tumbler - straight sides	x x X	
Water pitcher	x x X	Rare and Desirable.
CLEVELAND MEMORIAL		
Souvenir ash tray	x ? X	Two known in marigold.
COSMOS		
Small bowls	? x ? ? ?	Have only seen this in green; Edwards reports blue & white.
Small plates	? x ?	I would not really call these plates. All I have seen have been low bowls, not completely flat.
COUNTRY KITCHEN		
Berry set	x	Have only seen marigold large & small berry bowls.
Table set (4 pieces)	x ? X X	Marigold and vaseline are very rare.
Spittoon (whimsey)	x	Extremely rare, probably unique.
Vases	x	These are whimsys made from the spooner.
COURTHOUSE (bowl only)		
Lettered, fluted	x	Scarce.
Lettered, round	x	Rare.
Lettered, satin	x	The satin finish Courthouse bowl is very rare. I have seen these both fluted and round and the round one I saw was very low, almost a plate.
Unlettered	x	Very rare.

PATTERNS MADE BY MILLERSBURG - CONTINUED

PATTERN NAME Shapes known	A G M B V W	NOTES/COMMENTS
DAISY SQUARES		
Rose bowl	X x x	Rare and desirable. 1 amethyst known.
Goblet	x	Top is open, not pinched in.
Compote		Rare, this is on an amber base glass.
DEEP GRAPE (compote)	x x x x	Rare and very hard to buy. Top comes both round & square. One known with a candy ribbon top. This is Edwards' name for the pattern which I prefer over Hartung's.
DIAMONDS		
Water set	x X x	Aqua known in pitcher and tumblers.
Pitcher oddity	x x ?	Pitcher without pouring spout.
Punch bowl & base	x x	One green and one amethyst bowl & base known. I have seen a second green bowl and 2 or 3 amethyst bases. No cups known.
DOLPHINS (compote)	x X R	Rare. Do not confuse this with the Diving Dolphin bowls. This pattern is not listed by Hartung. For illustrations see Pressnick Book 2, plates 73A & B or Edwards, page 26.
ELK		
Bowl	x	Rare. 1910 Detroit 2-eyed. This bowl comes round and fluted.
Paperweight	x X	Very rare in amethyst, extremely rare in green. (I know of only 3 examples in green).
FEATHER & HEART		
Water set	x X x	Scarce.
FLEUR DE LIS		
Bowl, collar base	x x x	Fluted and round; round more desirable.
Bowl, dome base	x x x	Fluted, round, tri-cornered; tri-cornered best.
Rose bowl, collar base	x	Very rare, know of only 1 example.
Rose bowl, dome base	x	Very rare, know of only 1 example.
FLOWERING VINE		
Compote	x x	Extremely rare. Edwards reports this in marigold although the compote he is reporting was owned by O. Joe Olson and is green. This sold for \$1,300 in January, 1982. 1 known in green and 1 in amethyst.

PATTERNS MADE BY MILLERSBURG - CONTINUED

PATTERN NAME Shapes known	A G M B V W	NOTES/COMMENTS
CHERRY, MILLERSBURG - Continued		
Bowl, large	x x x	Can be found round or fluted; also comes on aqua base.
Bowl, Hobnail back	x R x ?	Very rare; usually a "sleeper".
Sauce, Hobnail back	x	1 known.
Large compote	x x x X	Very rare, few collectors have seen this.
Large compote-whimsey	x R	Probably unique, top shaped like a banana boat, pictured in Edwards' book.
Milk pitcher	x x X	Rarer than the water pitcher.
Plate (flat) 6"	? ? x	A very rare item, know of only 5.
Plate (flat) 9"	R	One example reported, a rare size.
Plate (flat) chop	R x x	Extremely rare, a top item.
Powder jar	R x	Extremely rare, a gem in any collection.
Table set (4 pieces)	x x x R	The blue table set would be a find.
Tumbler - flared sides	x x x	See Owens' book for illustrations of the two tumbler variations.
Tumbler - straight sides	x x X	
Water pitcher	x x X	Rare and Desirable.
CLEVELAND MEMORIAL		
Souvenir ash tray	x ? X	Two known in marigold.
COSMOS		
Small bowls	? x ? ? ?	Have only seen this in green; Edwards reports blue & white.
Small plates	? x ?	I would not really call these plates. All I have seen have been low bowls, not completely flat.
COUNTRY KITCHEN		
Berry set	x	Have only seen marigold large & small berry bowls.
Table set (4 pieces)	x ? X X	Marigold and vaseline are very rare.
Spittoon (whimsey)	x	Extremely rare, probably unique.
Vases	x	These are whimsys made from the spooner.
COURTHOUSE (bowl only)		
Lettered, fluted	x	Scarce.
Lettered, round	x	Rare.
Lettered, satin	x	The satin finish Courthouse bowl is very rare. I have seen these both fluted and round and the round one I saw was very low, almost a plate.
Unlettered	x	Very rare.

PATTERNS MADE BY MILLERSBURG - CONTINUED

PATTERN NAME Shapes known	A G M B V W	NOTES/COMMENTS
FRUIT BASKET		
Footed bon-bon	x	Extremely rare; I know of only 5.
GAY NINETIES		
Water pitcher	x X ?	Three amethyst & one green pitcher known.
Tumbler	x ? X	15-20 amethyst and 2 marigold tumblers known.
GRAPE WREATH (also see Blackberry Wreath & Strawberry)		
Bowls	x x x	
GRAPE LEAVES		
Bowl	x ? x X	One of the sleepers, very hard to find.
HOBNAIL		
Covered butter	x x x	The table set is one of the top rarities.
Sugar, creamer, spooner	x x x x	Have not seen all three pieces in all of the colors.
Rose bowl	x X x	Green is very hard to locate.
Spittoon	x X x	Again, green is the rarest.
Vase	? x ?	From the spittoon/rose bowl mold.
Pitcher	x X x x	High on the list of Millersburg pitchers; 1 green pitcher known.
Tumbler	x X x x	Green is the rarest in tumblers.
HOBSTAR AND FEATHER		
Punch set - tulip top	x ? ?	A top rarity, I have seen only amethyst.
Punch set - flared top	X X x R	Vaseline base only reported. The flared top punch bowl comes with an unpatterned interior and also with the Fleur de Lis interior.
Giant rose bowl	x x X	Rare and desirable. 1 marigold known.
Rose bowl Whimseys - "punch bowl"	x	The first variation is the rarest of the whimsys and, in my opinion, the only one that looks good. In this variation, the top has been flared out and the owner calls it a "punch bowl".
- "swung" vase	x x	The rose bowl stretched into a "swung" vase; 4 known.
- "crimped top"	x	The rose bowl with the top "crimped in"; very nice, 1 known.
Bowls, large	x	One known, extremely rare.
Bowls, small	x	Two known to match the large bowl; 1 is cracked.
"Card" bowls	x	In crystal, these were made in the shapes of Diamond, Spade, Heart and Club. In carnival, the Heart and Diamond have been found - <u>very rare</u> .

PATTERNS MADE BY MILLERSBURG - CONTINUED

PATTERN NAME Shapes known	A G M B V W	NOTES/COMMENTS
HOBSTAR AND FEATHER - Continued Table set	x x x R	Neck and neck with Hobnail for the title of the rarest of the Millersburg table sets. A complete four piece set in mixed colors of amethyst and green was sold at the Wishard auction. The only reported piece in vaseline is a sugar top.
HOLLY WHIRL (or SPRIG) Deep sauce dish	x	This shape is hard to find and worth the search.
Nappy, tri-cornered Bowls, many sizes	x x x x x	Another hard shape to locate. The amethyst bowls are usually very good.
2-handled bon-bon 2-handled bon-bon (Isaac Benesch)	x x x x	Only known in marigold, advertising on bottom of base. The Holly Whirl pattern is slightly different on these than the normal 2-handled bon-bon.
ISAAC BENESCH Souvenir bowl	x	Only seen in amethyst; shards unearthed at plant.
Error bowl	x	Error in spelling, it reads <u>Benesch</u> rather than the normal <u>Benesch</u> . Only 1 reported, owned by O. Joe Olson who bought it from Dick Loechinger.
J. I. CASE Souvenir tray	?	Reported stolen from Pressnick museum. Many rumors of this piece have persisted over the years, but I have yet to track down one.
LEAF & LITTLE FLOWERS Miniature compote	x x X	Comes with a round or fluted top. A gem.
LITTLE STARS Bowl, fluted 7"	x x x	Scarce pattern, probably one of the early ones.
Bowl, low, unfluted	x	From the same mold as above, but a round edge.
Bowl, round 9½"	x x	This is rare; I have seen only 2.
Bowl, 10½"	X	I have seen one 10½" bowl in green, it was cracked - <u>very rare</u> . Same size as Rosalind large bowls.

PATTERNS MADE BY MILLERSBURG - CONTINUED

PATTERN NAME Shapes known	A G M B V W	NOTES/COMMENTS
MANY STARS Bowl, fluted Bowl, unfluted	x x x X x x x X	Scarce and desirable pattern. The round (ice cream) shape is rare and really shows off the pattern. These bowls come with 5 and 6 pointed stars in the center. Have seen more 6 than 5.
Plate ??????		Both Hartung and Edwards list a plate, but I have never seen or heard of one. White is also mentioned as a base color, but I have not seen an example. I have seen a bowl with clear base and gold stars which is unusual, but which is not white.
MARILYN Water sets	x X x	Rare, but not in the Hobnail category. Green tumblers are extremely rare.
MAYAN Bowl Plate ??????	? x ?	Have only seen green in this pattern. Edwards lists this; I cannot verify.
MORNING GLORY Pitcher (tankard)	x X x	1 green, 3 marigold & 4 amethyst pitchers known.
Tumbler	x X X	Extremely rare.
MULTI-FRUITS & FLOWERS Miniature compote	x x ?	Edwards calls this a dessert whimsey and suggests it could have been made from a punch cup. I feel it had its own mold. It is extremely rare and a top Millersburg rarity.
Pitcher	x X x	2 marigold, 1 green and 5 amethyst (in 2 different shapes known in my favorite pitcher).
Tumbler Punch bowl & base Flared top (normal)	x x x ? x X x	Very rare.
Tulip top	x x X X	Rare. Amethyst is the easiest to find though I have passed up buying 2 sets because the color was not very good. Marigold is harder to find and green is seldom seen.
MITRE OVALS Vase	X x X	A top Millersburg rarity. I know of 1 marigold and 2 green sets. 1 amethyst and 1 <u>blue</u> set (complete). One marigold known (damaged). Except for the Peoples vase the rarest of Millersburg vases.

PATTERNS MADE BY MILLERSBURG - CONTINUED

PATTERN NAME Shapes known	A G M B V W	NOTES/COMMENTS
NESTING SWAN Bowl	x x x X X	Very popular pattern; 1 each in blue and vaseline.
Spittoon (whimsey)	x	Extremely rare, probably unique, 1 known, 2nd reported.
Rose Bowl	x	
NIGHT STARS Bon-bon (2-handled)	x x ?	Rare, hard to locate, one of my favorites.
Card tray (2-handled)	x ? ? X	Very rare, Edwards does not list this shape.
OHIO STAR Vase	x x x R R	Rare. Colors, in the order of availability are: amethyst, green, marigold, blue, white & <u>aqua opal</u> ! Hartung reported 2 blue vases as part of her collection that was stolen; her illustration quotes Marshall Shafer as saying the vase he had was a "frosty white." If anyone can confirm the existence of the white Ohio Star vase, I would appreciate it.
Swung vase	x x	The normal vase, "swung" or stretched out. I have seen only 4 of these; 2 are green, 1 is amethyst and 1 is <u>aqua opal</u> !
OLYMPIC Miniature compote	x x ?	Extremely rare. Green sold for \$700 in January, 1982.
Plate	? ? ?	Hartung lists this; I know of no examples.
PEACOCK Berry sets	x X x	Scarce. Green is the hardest color to locate.
Bowl, 7½" variant	x x X	Extremely rare. Same size and back pattern as the Court House bowl. This variant has tremendous mold detail. An outstanding example of Millersburg.
Bowl, 9" variant	x x R x	Scarce size, mold work not in the same class with the 7½" variant.
Bowl, 10"	x X x X	3 known in blue; 1 radium finish, 2 satin finish.
Ice Cream sets	x X x	Rare. Green is the hardest color to locate.
Fluted sauce Plate, 6"	x x x X x ? X	Same mold as round ice cream sauce. Very rare. 10-12 in amethyst, have seen 1 in marigold.

PATTERNS MADE BY MILLERSBURG - CONTINUED

PATTERN NAME Shapes known	A G M B V W	NOTES/COMMENTS
PEACOCK - Continued Plate, Chop	x ? x	Extremely rare; 3 amethyst, 4 marigold. A top item.
Rose bowl Spittoon (whimsey)	x ? x	Large, beautiful; very desirable! Extremely rare, made from the master berry bowl.
Whimsey "proof"	x x	See Edwards. Rare; this is the small berry bowl size.
PEACOCK AND URN Bowls Compote, giant	x x x x x X	Normally fluted. Rare. You will seldom see this item change hands.
PEACOCK TAIL VARIANT Compote	x x x	Cute.
PEOPLES VASE Flanged top Straight top	x x x x	Two examples known in amethyst. 1 marigold, 1 green known; 1 blue known and another reported. Has to be rated the top Millersburg rarity based on its desirability that has commanded prices up to \$10,000 (part trade).
PERFECTION Water pitcher	x X X	Green rarest (3 known); marigold next (4 known).
Tumblers	x X X	Normally amethyst is the only color seen traded; have seen 1 green tumbler and know of 3 in marigold.
PIPE HUMIDOR Tobacco Humidor	X x x	A top rarity; less than a dozen examples known.
POPPY COMPOTE, Large Flattened top	x x x	The top is not completely flat, but much flatter than the normal compote top. I have seen 1 example in each of these colors.
Normal top	x x X	Scarce; the most commonly found color is green, next is amethyst. Marigold is very seldom seen.
PRIMROSE Bowl	x x x X	I know of 1 example in blue.
RAYS & RIBBONS Bowl	x x x X	Several different shapes in this bowl including 1 known example of a banana boat in green.
Plates	x	I have seen 1 true flat plate in amethyst.

PATTERNS MADE BY MILLERSBURG - CONTINUED

PATTERN NAME Shapes known	A G M B V W	NOTES/COMMENTS
ROSALIND		
Bowl, 5½" sauce	X	Very rare.
Bowl, 10"	x x x	Scarce and hard to find bowl.
Compote, 6"	x x	Extremely rare.
Compote, 10"	X	Two known in marigold.
Compote, 10" jelly	X	One known in amethyst.
Plate	X x	One known in amethyst; three or four in green.
ROSE COLUMN		
Vase	x x x X	A very nice item. I know of 4 marigold vases. I have also seen 1 amethyst vase where alternating columns of roses were red and gold and the leaves on the top portion of the vase were green. This was fired-in coloring. This vase would be classed as experimental and is an exceptional example. 1 example is known in blue.
ROSES & FRUIT		
Footed bon-bon	x x X	Not listed by Hartung. See Presznick or Edwards. This bon-bon is very similar to the Fruit Basket. Mark this as very rare.
SEACOAST		
Pin Tray	x x X	Rare and desirable.
SEAWEED		
Bowl, 5½" sauce	X R	Have only seen one, very rare size.
Bowl, 9" round	? ? x	This size bowl is not normally seen. The more common size is the larger one listed below.
Bowl, large, fluted	x x x	Scarce, this is the most common shape.
Bowl, large, round	? ? x X	Ice cream shape.
Plate	? x X	Made from the 9" bowl; 1 known in marigold.
STRAWBERRY		
Bowls	x x x	
Compote, dome ftd.	x x x X	The compote is very rare, unlisted, and seldom seen.
Compote, whimsey	? x ? X	Vaseline reported by Edwards. This is the compote with the top shaped into what might be called a "gravy boat" shape. See Edwards, page 123.
SUNFLOWER		
Pin tray	x x X	Rarer than the Seacoast pin tray.

PATTERNS MADE BY MILLERSBURG - CONTINUED

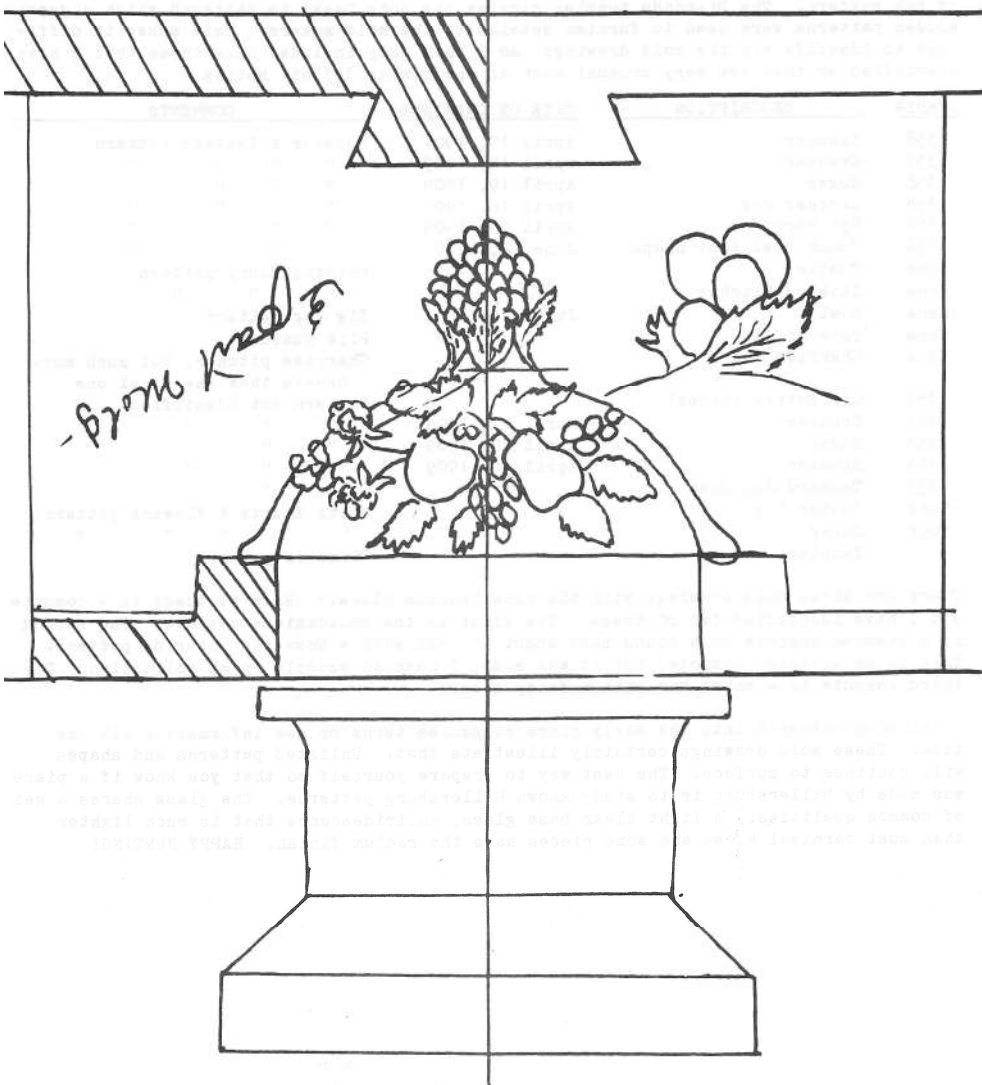
PATTERN NAME Shapes known	A G M B V W	NOTES/COMMENTS
SWIRL HOBNAIL		
Rose bowl	x ? x	Swirl Hobnail is rarer than Hobnail in all shapes.
Spittoon	x X x	Green is extremely rare; only 1 known example.
Vase	x X x	From the rose bowl/spittoon mold.
TRACERY		
Bon-bon (large)	X x ?	Rare and hard to find.
TROUT & FLY		
Bowl	x x x X	Popular pattern, comes in several shapes.
Plate - flat	x ? R	Spectacular! Two known in amethyst.
VINTAGE (HOBNAIL back)		
Bowl, 5½" sauce	x x x	Have seen 1 blue, 1 green, 1 amethyst and another blue reported.
Bowl, 9½" round	R x x	Extremely rare. A top item that always commands a high price when offered for sale.
Bowl, 9½" fluted	x X	Blue is a double rarity (color & pattern), spectacular!
WHIRLING LEAVES		
Bowls	x x x x X	Two blue bowls known; 1 in vaseline.
Plate ??????		I have seen none; possibly confused with Acanthus.
WILD FLOWER		
Compote	x X x	Very rare.
Jelly compote	x x ? X	All jelly compotes should be rated as top rarities.
WILD ROSE KEROSENE LAMPS		
1. Small size	X x x	Harder to find than the medium size.
2. Medium size	? x x	Green medium size is the one you normally see at auctions.
3. Large size	? ? X	Only 2 marigold known; rarer than the Medallion lamp.
4. Medallion	x x x	I know of 4 amethyst, 1 marigold and 1 green of these medium-sized lamps with the Ladies' Medallions on the underside of the base. A top rarity.
ZIG ZAG		
Bowls	x X X	Come fluted, tri-cornered and ruffled.
Card tray, small	X	Only 1 known example - extremely rare and very nice.
UNPATTERNED COMPOTES	X X	Very rare. One marigold and one amethyst in tall Rosalind shape. One amethyst in Acorn/Wildflower shape. No pattern on interior of compote.

MILLERSBURG RESEARCH NOTES

Number 5 In A Series by Jack D. Wilson

MILLERSBURG MOLD DRAWINGS

One of the most spectacular research findings in years is the discovery of original mold drawings from the Millersburg Glass Company. These drawings are now owned by the Fenton Glass Museum. I acquired copies of all the drawings from Frank Fenton and the illustration below is a tracing of the mold drawing. This drawing is shown here upside down. If you turn it over you will see the original perspective with the plunger coming from the top. This mold is a butter top in Multi Fruit & Flowers!



MILLERSBURG MOLD DRAWINGS

Page 2

There are about two dozen of these original mold drawings. Most carry the name of "Millersburg Glass Company", a few have the name "Radium Glass" and some carry no identification. One point should be kept in mind about the implications to be drawn from these mold drawings: Millersburg Glass Company made a lot of pressed glass. They are known today for their carnival glass, but much of the early production was pressed glass. These mold drawings, by themselves, do not prove a specific piece was made. Often mold drawings were made but discarded before they were approved for production. A Multi Fruits and Flowers table set would be a spectacular find, but it may never have been made. Previously unknown pieces turn up almost each year; perhaps this set will surface. Most of the mold drawings do not have the full detail as the Multi Fruits and Flowers butter top does; they are mainly silhouette representations of the pattern. The Diamonds tumbler carries the note "make to pattern" which suggests wooden patterns were used to furnish details to the mold makers. This makes it difficult to identify all the mold drawings, so I have only included here those that I have identified or that are very unusual such as the number 353 oil bottle.

NUMBER	DESCRIPTION	DATE ON DRAWINGS	COMMENTS
358	Spooner	April 19, 1909	Hobstar & Feather pattern
358	Creamer	April 19, 1909	" " " "
358	Sugar	April 19, 1909	" " " "
358	Cracker Jar	April 16, 1909	" " " "
358	8½" Berry	April 19, 1909	" " " "
358	Punch Bowl Foot Snaps	June 14, 1909	" " " "
None	Tumbler		Morning Glory pattern
None	Tankard Pitcher		" " "
None	Bowl	June	Zig Zag pattern
None	Tobacco Jar		Pipe Humidor
None	Cherries Jug		Cherries pitcher, but much more ornate than the final one
353	Oil Bottle (Cruet)		Pattern not identified
353	Creamer	April 17, 1909	" " "
353	Sugar	April 16, 1909	" " "
353	Spooner	April 16, 1909	" " "
353	Tankard Jug Snap		" " "
None	Butter top		Multi Fruits & Flowers pattern
None	Sugar		" " " "
7	Tumbler		Diamonds pattern

There are three mold drawings with the name "Radium Glass." Each of these is a compote and I have identified two of these. The first is the Boutonniere compote. The second is a stemmed compote on a round base about 6" tall with a Rosalind interior pattern. This is an unlisted compote, but it was made; I have an example in my collection. The third compote is a short one with a fancy stem.

Continuing research into the early glass companies turns up new information all the time. These mold drawings certainly illustrate that. Unlisted patterns and shapes will continue to surface. The best way to prepare yourself so that you know if a piece was made by Millersburg is to study known Millersburg patterns. The glass shares a set of common qualities: a light clear base glass, an iridescence that is much lighter than most carnival glass and some pieces have the radium finish. HAPPY HUNTING!

SPECIFIC PATTERNS: THE PEOPLE'S VASE

by JACK D. WILSON

The People's Vase is considered by many as the single most desirable piece of carnival glass ever made. Many stories have been advanced to account for the unusual design, but the most likely theory is that it depicts an Amish Harvest Festival. The Amish lead a very spartan life; their idea of a party is to have a very elaborate meal with many courses. The only time they will dance is at the Harvest Festival.

There are five known examples of this rare vase and a sixth has been reported by not confirmed by myself. Tracing the known examples through private and public sales reveals that it has sold for as low as \$5 (in "the good old days") and as high as \$10,000. I expect more of these vases to surface in the future as good carnival is still surfacing all the time.

The following is a listing of all the known sales involving the five confirmed vases. If any of the readers of this article can confirm the reported 2nd blue vase, I would appreciate it.

AMETHYST (TWO EXAMPLES KNOWN, BOTH HAVE FLANGED/RUFFLED TOPS)

- Example 1: 1959 - Bought by a couple (carnival collectors) from Mrs. Bernice Corrothers (a dealer in Millersburg, Ohio) as part of a 150 piece collection. Total price of the collection was \$750, which is \$5 per piece!
This is considered the finest People's Vase known!
- Example 2: Apr, 1971 - Bought out of a house in Holmes County, Ohio by Mrs. Florence Martin (a dealer near Millersburg). It was reportedly found sitting on the floor in a closet! Mrs. Martin offered it to several people who thought the price was too high.
- May, 1971 - Mrs. Martin sold it to an Ohio collector for \$2,500.
- 1974 - Mrs. Martin bought the vase back for \$4,000 on behalf of John Woody who paid her a \$400 commission (\$4,400 total price).
- 1974 - Sold by John Woody to Ray Wishard for \$10,000 (\$3,000 cash plus seven water sets).
- May, 1977 - Sold at the Wishard auction to a Texas collector for \$5,900.

BLUE (ONE EXAMPLE CONFIRMED; ANOTHER NOT CONFIRMED)

- Example 1: 1963 - Sold at Wichita antique show by T. M. (Max) Penny (a Tulsa, Oklahoma dealer) to Mrs. Emma Schrader of Hutchinson, Kansas for \$75.

SPECIFIC PATTERNS: THE PEOPLE'S VASE - CONTINUED

- Sep, 1967 - Mrs. Schrader consigned the vase to a John Woody auction held at Augusta, Kansas where it was sold for \$1,350 to Charles Thrawley.
- Aug, 1969 - Sold at Thrawley auction for \$2,700 to a California collector.
- 1973 - John Woody bought it from the California collector for \$4,500.
- Aug, 1973 - Sold at Woody auction for \$8,100 to Jim Mogg.
- Jan, 1982 - Sold at Woody auction for \$5,000 to a Texas collector (he now has 3!).
- Example 2: May, 1975 - O. Joe Olson reports a second blue People's Vase "...in a private collection in Ohio, confirmed in 1973. Owner said it was not for sale at any price."

MARIGOLD (ONE EXAMPLE KNOWN IN THIS COLOR)

- Aug, 1965 - Bought by Mrs. Charlotte Allenbaugh of Dover, Ohio at a house sale in Wilmot, Ohio for \$45. This is the vase illustrated in the Presnick books and was offered to Rose for \$550. Rose did not buy. It was also offered to Ed & Carla Bredel at the same price and they too declined.
- Sep, 1967 - Mrs. Allenbaugh sold it to Dick Loechinger for \$650.
- Jul, 1968 - Sold at the Dayton convention to Mrs. Collier for \$1,050.
- Feb, 1976 - Sold at the Collier auction for \$4,500 to Jim Mogg who then had two.
- Aug, 1981 - Sold at private sale by Jim Mogg to a Wisconsin collector for a removed \$7,000.

GREEN (ONE EXAMPLE KNOWN IN THIS COLOR)

- 1965 - Sold by Chicago art glass dealer to the Ken Clarks for \$75.
- Feb, 1974 - Sold at Clark auction to Delton Kemp for \$7,100.
- Jun, 1977 - Delton Kemp sold it to Sam Roebuck for \$7,100 at private sale.
- Dec, 1979 - Sold by Sam Roebuck to a Texas collector as part of a 3-piece package: green Frolicking Bears tumbler, People's vase and peach opal Farmyard @ \$30,000 (rumored price).

MILLERSBURG PUNCH SETS

by JACK D. WILSON

Millersburg made only four patterns in punch sets that were iridized and two of these are in such short supply, they can be classified as experimental.

- BIG THISTLE** - The rarest of the Millersburg punch sets; there are only 2 known examples. One sold at the Wishard Auction in March, 1977 for \$5,800; this has the sides of the top flared out slightly. The only other known example (in an Ohio collection) has the sides straight up. No punch cups have ever surfaced for this pattern. If cups were made, they may be completely plain (outside WIDE PANEL pattern only) Both sets are amethyst.
- DIAMOND** - Like the BIG THISTLE, punch cups have never been discovered in the DIAMONDS pattern. Two sets are known; one in green and one in amethyst. I have seen an additional green top (only) in Holmes County and there are at least 2 more amethyst bases.
- HOBSTAR & FEATHER** - This punch set is massive and comes in three variations. All amethyst sets, except one, have been the tulip (turned in) top. The green (extremely rare) and the marigold have flared-out tops and some have the FLEUR DE LIS pattern on the interior of the punch bowl. I rate the green as extremely rare because I know of three bowls, but all have bases that are not green. I have also seen a blue punch cup, but no bowl or base to match. There is also a base in vase-line, but no bowl confirmed in this color.
- MULTI-FRUITS & FLOWERS** - This pattern comes in two variations. The tulip top set is the rarest with only 1 blue, 2 marigold, 2 green and 1 amethyst sets. The flared-bowl set comes in amethyst, marigold and green, with green being extremely rare.

Published May, 1978
Revised Feb. 1, 1982

SIGNIFICANT EVENTS - MILLERSBURG & RADIUM GLASS COMPANIES

by JACK D. WILSON

- May 10, 1908 - Millersburg Glass Company was incorporated with a Capital Stock of \$125,000 divided into 1,250 shares at \$100 each.
- July 11, 1908 - The leading citizens of Millersburg, Ohio were approached by George A. Schodorf (from Wooster, 17 miles to the North). He told them the Fenton Glass Company was looking for a new factory site.
- July 16, 1908 - John Fenton spoke at a public meeting in Millersburg and presented his views on why he wanted to build a plant in Millersburg.
- July 28, 1908 - Options to 54.7 acres of land were turned over to Mr. Fenton.
- August 18, 1908 - After part of the above land was subdivided, a sale of 200 lots was initiated. This money and the money from sale of company stock was used to build and equip the new plant.
- September 14, 1908 - Ground was broken for the plant foundations.
- May 20, 1909 - First day of official production! The first pieces of glass produced were table set pieces in crystal in the patterns, "Ohio Star" and "Hobstar & Feather." During the first six months of production, the factory used formulas brought over from Fenton in the production of Carnival Glass.
- January, 1910 - Introduction of a new line of glassware featuring lighter shades of base glass and a "RADIUM" finish.
- June, 1910 - Holmes County "Court House" bowl in Radiumware was made as a souvenir for the people who helped John Fenton direct the gas lines to the factory. This bowl was made in at least four different versions: the ruffled radium bowl; the unruffled (round) radium bowl; the unlettered radium bowl; and the satin (taffeta finish) bowl.
- March 23, 1911 - Stephen Hipkins took the Millersburg Glass Company to court for nonpayment for the mold work he did for them. This was followed by other lawsuits which forced the company into bankruptcy.
- September 23, 1911 - Millersburg Glass Company sold to Samuel B. Fair at public sale for \$14,203.
- October 12, 1911 - Radium Glass Company incorporators meet and elect directors.
- November, 1911 - Radium Glass Company starts production.
- May 28, 1912 - Last shipment made to F. W. Woolworth.
- October 11, 1913 - Plant sold to Jefferson Glass Company.

Months of Production:

Millersburg Glass Company	28 months (at most)
Radium Glass Company	<u>6 months</u>
Total for both	<u>34 months</u> (at most)

Three years of production is a mere fraction of the other major glass companies. Fenton and Imperial have been in continuous production; Northwood produced Carnival Glass for about 14 years. No wonder Millersburg Glass is so hard to find!

THE FABULOUS MILLERSBURG KEROSENE LAMPS

by JACK D. WILSON



Photo #1: Six carnival glass WILD ROSE lamps by The Millersburg Glass Company. Left to right: small amethyst and marigold, medium green, Ladies Medallions in amethyst and green (font replaced) and large marigold.

The kerosene lamps made by the Millersburg Glass Company of Millersburg, Ohio circa 1909-1911 are extremely rare and desirable. They are sought by kerosene lamp collectors and Carnival Glass collectors alike.

The reason these lamps are so rare is twofold: the short length of production and their original use. Millersburg was only in business for two years before it went bankrupt. By comparison, Imperial Glass Company, maker of the Zippered Loop kerosene lamp, is still in business. Millersburg kerosene lamps were never reproduced, while the Zippered Loop was reproduced in the 1960's. Millersburg, Ohio is in the heart of the Amish country in Ohio. Many of the original Millersburg lamps were used by the old order Amish who do not use electricity. Many of these lamps suffered damage to the oil font. They would crack from heat or use and that lessened the number that survived.

What lamps did Millersburg make? They made three: the Wild Rose kerosene lamp, the Wild Rose with Ladies Medallions on the underside and a crystal lamp with Ladies Medallions, but no Wild Roses.

The Wild Rose lamp was made in Carnival Glass in the colors of marigold, green and amethyst. In my experience, green is the most prevalent color, followed by amethyst and, very rarely, marigold.

THE FABULOUS MILLERSBURG KEROSENE LAMPS - CONTINUED

This lamp was made in three basic sizes: small, medium and large. The size refers to the base, not the oil font. Oil font sizes and shapes can vary widely on these lamps. I have found the medium size lamp most prevalent with the small following and, finally, the large lamp.



Photo #2: Wild Rose lamps in the 3 sizes:

Small - 5-1/4" base diameter

Medium - 6-1/4" base diameter

Large - 6-3/4" base diameter, 7" font diameter,
4-3/4" base height

Price guide would range from \$600 for a medium green to \$1,200 (or more) for a large marigold. It should be noted that prices on Millersburg Carnival Glass have been rising rapidly in the last 3 or 4 years. Many rare items have brought double or triple previous sale prices when they come up at auction.

The Ladies Medallion lamp is the large size Wild Rose lamp with intaglio medallions of three ladies on the underside of the base of the lamp. These lamps are extremely rare. Perhaps a half dozen or so exist. They almost never come up at auction and are usually sold at private sale - at the asking price - and quickly! Legend has it that the medallions are the wives of the three major stockholders in the Millersburg Glass Company. This has not been proven, but it is romantic. Price guide for a Ladies Medallion lamp would be over \$1,000.

THE FABULOUS MILLERSBURG KEROSENE LAMPS - CONTINUED

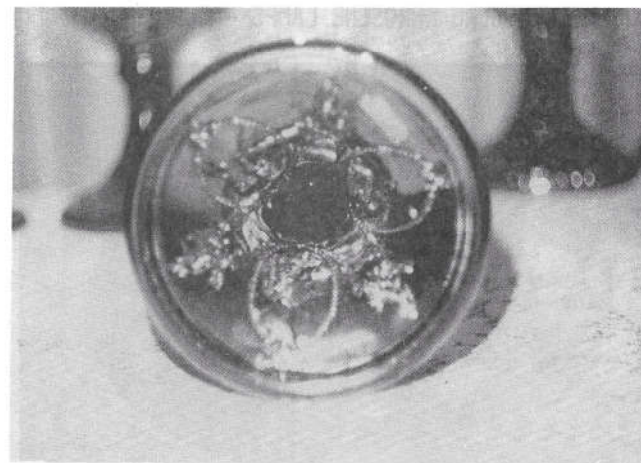


Photo #3: Bottom of the base of a Ladies Medallion lamp.

I have seen one example of a crystal (pressed glass, non-Carnival) Ladies Medallion lamp made by Millersburg. It does not have the Wild Rose pattern on the top of the base. It is similar to the Riverside Ladies Medallion lamp, but does not contain the "RIVERSIDE" raised lettering on the exterior of the base. Price guide --? It is one of a kind.

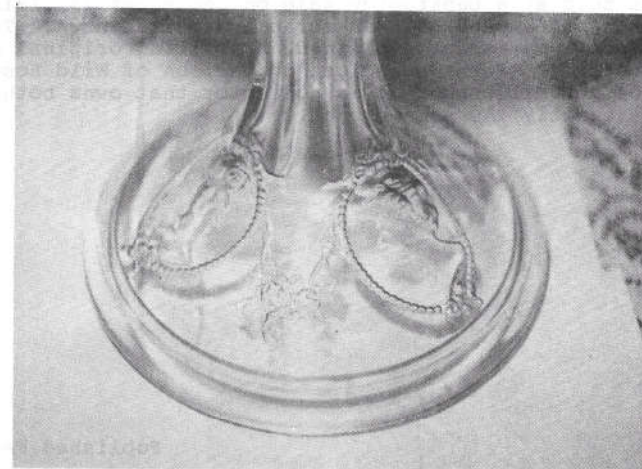


Photo #4: Clear (crystal) Ladies Medallion lamp.

THE FABULOUS MILLERSBURG KEROSENE LAMPS - CONTINUED

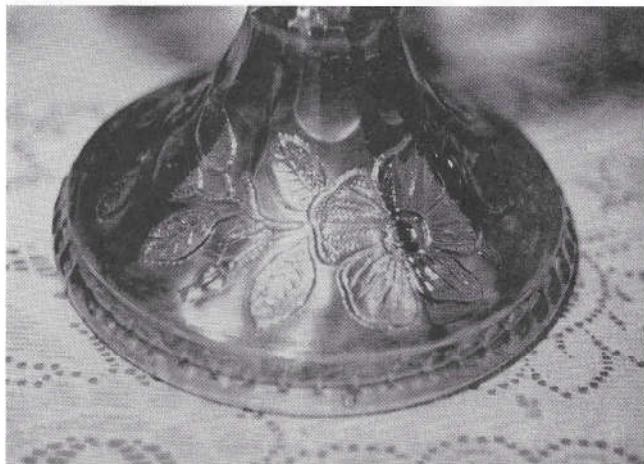


Photo #5: Closeup of pattern detail from large marigold Wild Rose lamp.

Millersburg Glass Company started production on May 20, 1909. On March 23, 1911 Stephen Hipkins (of the Hipkins Novelty Mold Works) took the company to court for nonpayment for his mold work. The company was sold at a bankruptcy sale on September 23, 1911 for \$14,203. The molds were sold as scrap and melted down. The Riverside Wild Rose lamp is not explained. Was it an original mold or a copy by Riverside? Perhaps a close comparison of Wild Rose lamps by Riverside and Millersburg by a collector that owns both will tell if they are exactly the same or not.

Published February, 1982

CARNIVAL GLASS VASES BY MILLERSBURG

Most people consider Carnival Glass vases to be fairly abundant and not very desirable. Many of the common Carnival Glass vases sell in the \$10.00 to \$40.00 range. In startling contrast are the vases made by the Millersburg Glass Company in the brief period 1909 thru 1911.

Every vase made by Millersburg is considered to be rare. Market values range from the low hundreds to several thousand dollars. In reviewing the individual patterns, it becomes quite apparent that production was extremely limited. In the case of the whimsy vases, the number made is even smaller.

SWIRLED HOBNAIL VASE

The SWIRLED HOBNAIL vases were made from the same mold used to fashion the rose bowl and spittoon. When the glass was removed from the mold and, while still hot, the glass worker held it in a set of "snaps" on the end of a metal pipe and swung the glass to stretch it into a vase. It is properly referred to as a "swung vase." While there are too many examples to be a true whimsy, this vase is definitely rare.

<u>Colors Known</u>	<u>Number Known</u>	<u>Market Value</u>
Amethyst	6-12	\$150-300
Marigold	3- 6	225-350
Green	3- 6	250-350

Market value is the price that would be paid by a knowledgeable buyer to a knowledgeable seller. The value range allows for differences in color, iridescence and height of the vases.



CARNIVAL GLASS VASES BY MILLERSBURG - CONTINUED

OHIO STAR VASE

Millersburg produced quite a bit of clear pressed glass (sometimes referred to as "crystal" because of its clarity) without iridescence in the OHIO Star pattern. It appears that production of Carnival Glass in this pattern was an afterthought. Only vases and a very rare compote were produced. The vases made fall into two categories: regular and whimsies.

The regular vase was produced in at least four colors, and maybe five. There were two distinct whimsies made; the first is a swung vase, which is the normal vase swung while it is still elastic into an elongated shape. The second is an opalescent vase.

The opalescent vase has to be seen to be believed. It is a mixture of green (not aqua) glass and opal throughout. It has a heavy butterscotch iridescence. It was probably made as a result of a production worker experimenting at the end of a day. The result is extraordinary. As far as I know, the only example of opalescent glass produced by Millersburg is the whimsey OHIO STAR vase.

<u>Colors Known</u>		<u>Market Value</u>
Amethyst	(Regular vase)	\$ 500-600
Green	" "	600-700
Marigold	" "	450-550
*Blue	" "	1,000 +
**White	" "	1,000 +
Aqua Opal	(Whimsey color)	2,000 +

*The blue vase exists. Mrs. Hartung reported two stolen in her Antique Trader ad following her robbery.

**White reported in Hartung pattern book. No verification exists.

CARNIVAL GLASS VASES BY MILLERSBURG - CONTINUED

WHIMSEYSOHIO STAR SWUNG VASE

<u>Colors Known</u>	<u>Number Known</u>	<u>Market Value</u>
Amethyst	1	\$1,500
Green	2	1,200
Aqua Opal	1	2,000 +

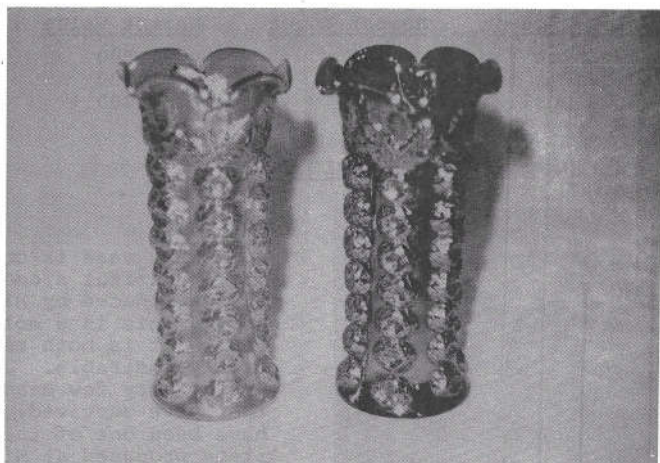
MITERED OVALS VASE

This vase is one of the most beautiful pieces of glass produced by Millersburg. This is a mold blown vase. It is both rare and highly desirable. Judging by the very few examples that have survived, it must have been one of the last items produced at Millersburg.

Market value of this vase is very hard to estimate; collectors with these vases do not want to sell and those who do not have them are actively seeking them out.

<u>Colors Known</u>	<u>Number Known</u>	<u>Market Value</u>
Amethyst	4- 8	\$1,200-1,500
Green	6-12	900-1,200
Marigold	1	1,500-1,750

CARNIVAL GLASS VASES BY MILLERSBURG - CONTINUED

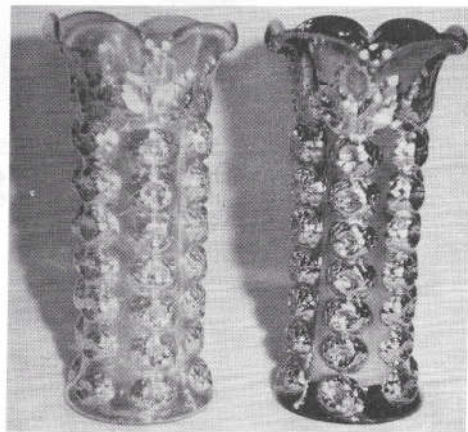
ROSE COLUMNS VASE

Again, this is a mold blown vase. It is known in four colors and an experimental finish. This vase ranks right behind the PEOPLE'S VASE as the most desirable vase by Millersburg. It should be noted that market values on this vase may be conservative. It would not surprise me to see any of these doubled at an auction.

<u>Colors Known</u>	<u>Number Known</u>	<u>Market Value</u>
Amethyst	10-14	\$ 800-1,000
Green	10-14	700- 900
Marigold	6- 8	1,000-1,200
Blue	1	2,500

There is also at least one amethyst vase with experimental fired-on red, green and gold coloring. This vase would bring at least \$1,500 if it ever comes on the market.

It should be noted that color varies widely on the green and amethyst vases. Many of the known examples have damage running from minor (burst interior bubbles) to major (bad cracks). Examples with good color and in mint condition will bring premium prices.



CARNIVAL GLASS VASES BY MILLERSBURG - CONTINUED

PEOPLE'S VASE

This has been an acknowledged top rarity for many years. A spectacular piece of glass, this vase weighs 5 pounds. It was made in two variations: the top completely straight up and also with a flanged top.

<u>Colors Known</u>	<u>Number Known</u>	<u>Market Value</u>
Marigold	1	\$6,000-8,000
Green	1	6,000-8,000
Amethyst	2 (flanged top)	6,000-8,000
Blue	1	6,000-8,000

HOBSTAR & FEATHER WHIMSEY VASE

The HOBSTAR & FEATHER giant rose bowl was also whimsied into a vase. These are spectacular examples of the glassworkers' art.

<u>Colors Known</u>	<u>Number Known</u>	<u>Market Value</u>
Amethyst	2	\$2,000-4,000
Green	2	2,000-4,000

THE LIBRARY OF CONGRESS VISIT

By Jack D. Wilson

When I was in Washington, D. C. in April, 1979 I visited the Library of Congress and reviewed a number of original glass journals in the 1908 - 1915 era. If you think research is dry and unexciting you are wrong, it was like the proverbial kid in the candy store! Rather than have you go to the Library of Congress listed below you will see the relevant excerpts:

POTTERY AND GLASS September, 1908 Page 26

"Unofficial advices are to the effect that Millersburg, O., has secured a branch of the Fenton Art Glass Co., whose plant is located at Williamstown, W. Va. Options on 50 acres of land have been secured and the plant may soon be in operation."

GLASS AND POTTERY WORLD ("The Green Book") Jan 20, 1909 Page 35

"Millersburg, O.-The Millersburg Glass Co., expect to make glass by the first week in February. The product is announced as table ware and specialties. There is still business to be created and cultivated in the latter line, but tableware production is well overdone, even if current prices represented any profits to the manufacturers."

POTTERY AND GLASS May 1909 Page 269

"Millersburg, O.-The new Millersburg Glass Co. expects to start up prior to June 1, making flint glass in tableware, specialties, opal goods, etc. Mr. John W. Fenton, also has acquired some profitable oil and gas well property, so that the town is ready to launch a large-sized boom. It is situated in an excellent farming country and has substantial reasons for growth beyond matters of glass, gas and energetic promotion."

POTTERY AND GLASS June 1909 Page 312

MILLERSBURG GLASS COMPANY ORGANIZED

Millersburg, O.-The Millersburg Glass Co., organized with capital chiefly from Marietta, O., and Williamstown, W. Va., has recently started. Colored glass, opal and some tableware will be made. The capital stock is \$125,000. J. W. Fenton, of the Fenton Art Glass Co., Williamstown, W. Va., is president; H. W. Stanley, Marietta, O., treasurer; John Holbrook, from Martin's Ferry, O., superintendent; H. F. Weber, formerly of Lancaster, O., sales manager."

POTTERY AND GLASS March 1910 Page 36

"Millersburg, O.-The line of radium glassware manufactured by the Millersburg Glass Co. has already made such a hit that business is booming. It is predicted that double the capacity worked six months ago, will soon be a reality. Another furnace has been added."

POTTERY AND GLASS April 1910 Page 27

"Millersburg, O.-The addition to the plant of the Millersburg Glass Company has been completed. This was made imperative because the orders that came in could not be handled promptly. Radium glass is the new creation that caused the rush. The plant is being operated on full time."

THE LIBRARY OF CONGRESS VISIT

POTTERY AND GLASS May 1911 (Glimpses of Glass Houses section)

"Millersburg, O.-William A. Miller and T. J. Schnee have been named as receivers and C. A. Estill, E. J. Duer and W. N. Crow appraisers of the Millersburg Glass Company. The action, which was taken upon application of Byron C. Sill, executor of the estate of John E. Koch, deceased, was mutually agreed upon by all parties concerned as the best way in which to handle the financial affairs of the company for the present. The new machinery and other improvements are nearly completed and the receivers are expected to start the plant this week when the output will be practically doubled."