

YOUR CHOICE--HANDLED COMPOTE OR FOOTED BON-BON
By: Diane Fry

**IRIDESCENT DOUBLE
HANDLED FOOTED BOWL.**



C1131 - 4x5 1/4,
rich golden tint,
heavy relief flo-
ral and wheat
sprays, conven-
tional embossing
inside. 1 doz.
pkg. Doz. **92c**

1913 Butler Bros. Catalog

While not as numerous in pattern variety as the collar-base bon-bons, these offer yet another interesting dimension to our collecting.

We offer a "bakers dozen" in this fascinating shape for your consideration.

They are listed alphabetically according to manufacturer. Hesitation grasps as I state that no Imperial designs appear in this shape, however, I can locate none.

Sources of research have been H.O.A.C.G.A. Educational Series I by John & Lucile Britt, Edwards early guide books and the latest Encyclopedia, Hartung Series, Fenton Glass-First 25 Years, and Mordini Auction Results.

Personal thanks for their special assistance go to Linda and Andrew Heaton, Cathy & Fred Roque and John & Lucile Britt.

Should anyone locate an unreported color or pattern in this compote or bon-bon shape, please advise us so that an update can be made. It will be most appreciated!

DUGAN PATTERNS

An appealing design with stippled background, a pretty scalloped edge and a notable exterior called Floral and Wheat. Found in a rare blue on occasion, also green, mgld., peach opal, purple, and a quite beautiful white. None appear to have sold at auction the past couple of years. This same Puzzle design appears on the foot of the stemmed cake plate in the Question Mark pattern. Desirability peaks with a blue one, but white or green are not easy to locate either. Some nice examples exist in the other colors as well. Worth the search.

PUZZLE



2.

continued

QUESTION MARK

Exterior is usually plain. You can look for this one in marigold, peach opal, purple and white. Prices are not unreasonable in any color. A non-handled compote and once in a while a stemmed cake plate in mgld., purple or white will surface with an exterior pattern called Georgia Belle and a third dimension pattern called Puzzle on the foot. These are not easily found. Consider yourself fortunate if you own one. They are lovely little pieces.



3.

continued

STARFISH

Plain exterior. Colors are green, mgld., peach opal and purple. This is a nice pattern to own, since it only appears on the "footed bon-bon" shape and a "non-handled compote" which is usually ruffled. Starfish examples are not readily available, but worth the search. Any color is usually priced under \$100. The small compote is 4½" tall, 4" across and can be found in a flat cake plate also.



4.

continued

FENTON PATTERNS

PEACOCK TAIL

Circa 1911-This pattern is similar to the Northwood Nippon. Also found in bowls, sauces, whimsy shapes, very rare 9" plates and certainly can be called a "standard" for Fenton Carnival Glass. There is also a collar-base version of bon-bon. This "footed" type is available in amethyst, blue, green and marigold. This lovely example brought \$75 at the 1992 Air Capitol Conv. auction. Recent auction results indicate that neither version of this bon-bon often presents itself. A white would be nice!



5.

continued

WREATH OF ROSES

This is a nicely balanced pattern available in amethyst, green, and marigold. Most likely a blue exists. I have not seen one. The panelled exterior extends down over the foot creating added interest to the overall design. Prices are usually less than \$100 for any color.

This pattern should not be confused with the stippled and unstippled Northwood BASKET OF ROSES found in a collar-base bon-bon with basketweave exterior usually marked N. Another name for Basket of Roses is ROSE WREATH.

A similar Wreath of Roses pattern appears on the base and bowl exterior of a beautiful punch set, also made by Fenton.



6.

continued

FUCHSIA

John and Lucile Britt wrote about this rare blue "footed bon-bon" in H.O.A.C.G.A. Bulletin in June 1992. It was found by a fortunate couple in Maryland. The Britt article notes that this pattern has also been found in marigold. Their conclusion is that this piece is so similar in shape and design to that of Wreath of Roses that more than likely Fenton is the maker. Since only the two are known, the proud owners can state their value best.



7.

continued

MILLERSBURG PATTERNS

ROSES AND FRUIT

Again, as with the Fruit Basket, the deep bowl effect displays the lovely pattern of this quite scarce and unusual piece. Observe the stippling around the interior edge. It is the only "handled compote" I know of with such an interesting band of stippling on the handles, as well. Amethyst price begins at more than \$500. Green extends to more than \$1,000. Currently, marigold, which is more scarce, and is found with radium treatment will sell in the \$1,000 range as well. Two blue are known. The one I have seen is in satin-radium finish and sold at auction in 8/31/91 for \$2600.



8.

continued

FRUIT BASKET



VERY FEW are known. The pattern exists only on this "footed bon-bon". An amethyst brought \$450 in 1990 (with poor irid.) Another, (with smoothed spot) sold for \$925 in March 1991. These prices reveal the interest and desirability of this beautifully executed piece. Could there still be a green or marigold to be found? Perhaps even a blue could surface! Wouldn't THAT be nice?

NOTE: Since the collar-base bon-bon article appeared in the Sept. 1992 issue of the Bulletin the following information has been received.

A fourth Lotus Land in amethyst has turned up in Texas.

I failed to list green as a Cherry Circles color. A call from Washington reminded me of that. The gentleman had found a very pretty one.

A letter from Canada and a call from Oklahoma described lovely amethyst Pond Lily's, another color I had not stated.

We were privileged to see THE quite beautiful ice green Pond Lily at Air Capitol Convention. It was priced at \$3000. A lovely couple from North Carolina took it home.

MANY thanks to those who took time to contact us with information to up-date the collar-base bon-bon article.

9.

continued

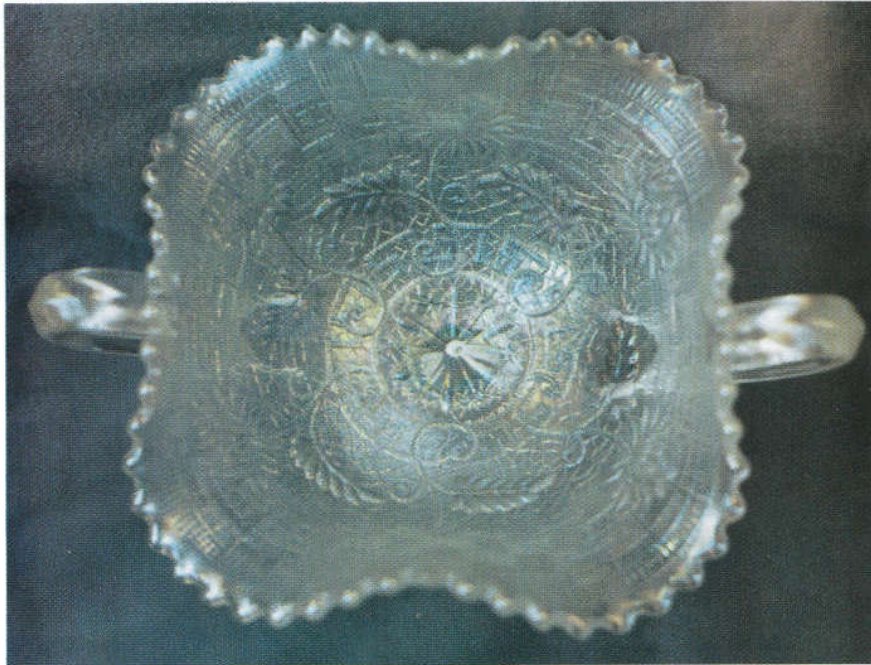
NORTHWOOD PATTERNS

EMBROIDERED MUMS

These are extremely difficult to find. Seen only in white with beautiful iridescence. This "footed bon-bon" is the exact same shape as Fruits and Flowers.

The pattern is intricate and exquisite. When found in the ruffled bowls of various colors or particularly in an ice green 9" plate, price sometimes exceeds desire, but SOMEONE is always willing to pay the price for such a prize!

Currently, these white bon-bons will usually bring in the \$1,000-\$1,100 range.



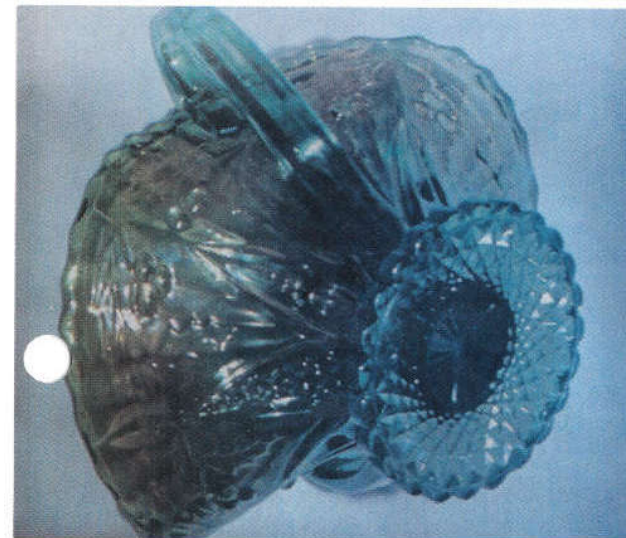
10.

continued



FRUITS & FLOWERS

Available in smooth background behind the pattern, with basketweave exterior in aqua opal, amethyst, blue, green, ice blue, ice green, lavender, mgld., purple, sapphire, smoke, teal and white. 1991 auction results indicate that prices range from under \$100 for mgld. and ameth. to \$900 for ice green. The pictured example is of a rare sapphire color. It brought \$750 at the 10/92 Air Capital Conv. Auction. An ice blue will sell for around \$550. A stippled version exists with the stippling extending over all area behind the pattern. Eight panels begin at the top of foot, continuing down to the outer edge of the base. These variants can be found in blue, green, and mgld. They are more difficult to locate and will bring slightly more than their smooth counterparts. These are a nice alternative to search for.



PANELLED HOLLY

More often found in green, however, purple and marigold do exist. The green ones I have seen usually have a marigold overlay of iridescence on the interior only. You will find them both deep and more open, such as card tray shape.

Prices tend to be unworthy of most Northwood pieces, probably because the pretty pattern is all exterior, however, in turning this piece over, we see a unique feature. None of the other bon-bons in this series have SUCH a lovely foot. It redeems the plain interior of the bowl sufficiently. None are listed as sold at auction during 1991. Perhaps we should look more closely for one to add to our collection?

WESTMORELAND PATTERNS

PRISMS



Measures $7\frac{1}{4}$ " across handles and is $2\frac{1}{2}$ " tall. Three amethyst ones sold in 1991 ranging from \$45-\$90. The pattern is intaglio with iridescence on the inside of the bowl only. An ornate star is under the base. Green exists along with a few marigold examples, but this piece is not easy to obtain.



KEYSTONE COLONIAL

This compote stands $6\frac{1}{4}$ " tall. At least three of these have been reported in purple, all with the Keystone trademark containing a "W". A lavender one brought \$100 in a 1990 auction. (Note: the Keystone trademark using the "W" was used between 1910-1920.)