

COMPOTES

This Notebook Section is the part of the section on Compotes. This part will attempt to cover Large Compotes, those that measure 6 inches across or height. This has been a rather difficult section to organize and to obtain information about. It is difficult to find any collector that has specialized in Compotes. Most all collectors have some compotes but it is not a specialty.

Because of the difficulty in obtaining information this section will probably be open for much criticism, but it is an attempt to record for the present and future collector information about Compotes.

Thanks to the following members for supplying information and photographs of their Compotes. Without their help this information could not be presented.

John & Lucile Britt	Manhattan, Kansas
James & Ardonna Bucher	Imperial, California
Don & Barbara Chamberlain	Manchester, Iowa
Robert & Donna Courts	Batavia, Ohio
Gordon & Noreen Curtis	Himrod, New York
L.L. & Jane Dinkins	Houston, Texas
Thomas & Erika Eslinger	St. Lambert, Quebec, Canada
Dean & Diane Fry	San Diego, California
Robert Grissom	Raytown, Missouri
Richard Hagood	Lexington, South Carolina
Don & Becky Hamlet	Asheboro, North Carolina
Larry Keig	Cedar Falls, Iowa
L.G. Lavoie	Rosemere, PQ, Canada
Alan Perry	Houston, Texas
Doug & Sharla Peters	Blue Springs, Missouri
Ronald & Gloria Pfeiffer	Rochester, New York
Alan & Lorraine Pickup	Hazelwood, Missouri
Fred & Cathy Roque	Bloomington, California
Fred & Karen Skinner	East Alton, Illinois
Stephen & Glen Thistlewood	Hampshire, England
Arvin & Betty Wolfgram	Appleton, Wisconsin

This information is printed by H.O.A.C.G.A. for the benefit of its present & future members.

Bob Grissom
President

Compotes



Dolphins

**1. Pattern: ACORN /
WIDE PANEL**

Maker: Millersburg
Color: Amethyst (R)
Green (R)
Marigold (R)
Vaseline (R)

**2. Pattern: PLAIN /
BASKETWEAVE**

Maker: Northwood
Color: Amethyst
Green
Marigold

**3. Pattern: PLAIN /
BEADED PANELS**

Maker: Dugan
Color: Peach Opal

**4. Pattern: BLACKBERRY /
BASKETWEAVE**

Maker: Northwood
Color: Amethyst
Green
Marigold
White (R)
Note: Only 1 known in white.

**5. Pattern: BLACKBERRY
BRAMBLE /
PLAIN**

Maker: Fenton
Color: Amethyst
Blue
Green
Marigold
White

**6. Pattern: BLOSSOMTIME /
WILDFLOWER**

Maker: Northwood
Color: Amethyst
Green (R)
Marigold

**7. Pattern: BUTTERFLY &
BELLS / PLAIN &
S SCROLL**

Maker: Crystal Glass / Australian
Color: Blue
Marigold

**8. Pattern: PLAIN /
BUTTERFLY BUSH**

Maker: Australian / Crystal Glass
Color: Blue
Marigold
Amethyst

9. Pattern: PLAIN / CHERRIES

Maker: Millersburg
Color: Amethyst
Blue (R)
Green
Marigold

**10. Pattern: CHRISTMAS
HOLLY / HOLLY**

Maker: Dugan
Color: Amethyst (R)
Marigold (R)

**11. Pattern: PLAIN /
WIDE PANEL**

Maker: Westmoreland
Color: Marigold (R)
Note: Referred to as "Colonial"
and "Keystone".

**12. Pattern: PLAIN /
DEEP GRAPE**

Maker: Millersburg
Color: Amethyst (R) Marigold (R)
Blue (R) Vaseline (R)
Green (R)

Note: This compote was made in a
square and round shape.
The square shape is rare.



1. ACORN / WIDE PANEL



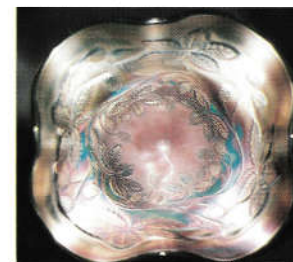
2. PLAIN / BASKETWEAVE



3. PLAIN / BEADED PANELS



**4. BLACKBERRY /
BASKETWEAVE**



**5. BLACKBERRY
BRAMBLE / PLAIN**



**6. BLOSSOMTIME /
WILDFLOWER**



**7. BUTTERFLY & BELLS /
PLAIN & S SCROLL**



8. PLAIN / BUTTERFLY BUSH



9. PLAIN / CHERRIES



**10. CHRISTMAS HOLLY /
HOLLY**



11. PLAIN / WIDE PANEL



12. PLAIN / DEEP GRAPE

**13. Pattern: PLAIN /
DIAMOND & OVALS**

Maker: Sowerby
Color: Marigold

**14. Pattern: DOLPHINS
ROSILAND / WIDE
PANEL**

Maker: Millersburg
Color: Amethyst (R)
Blue (R)
Green (R)
Marigold (R)

Note: Three compotes are known
in blue.

**15. Pattern: PLAIN /
DIAMOND BLOCK**

Maker: Imperial
Color: Marigold
Clambroth

**16. Pattern: PLAIN / DIAMOND &
DAISY CUT**

Maker: US Glass
Color: Amethyst
Marigold

**17. Pattern: WIDE PANEL /
FANCY FLOWERS**

Maker: Imperial
Color: Marigold

Note: Comes in a ruffled edge also.

**18. Pattern: PLAIN /
FERRIS WHEEL**

Maker: Indiana Glass
Color: Clambroth

Note: This is a covered compote.

**19. Pattern: PLAIN /
FILE & FAN**

Maker: Dugan
Color: Peach Opal

**20. Pattern: WIDE PANEL /
FLOWERING VINE**

Maker: Millersburg
Color: Amethyst (R)
Green (R)

Note: Two Compotes are known in
Amethyst, one in Green.

**21. Pattern: PLAIN /
FLUTE & CANE**

Maker: Imperial
Color: Marigold

**22. Pattern: PLAIN / FOUR
SEVENTY FOUR**

Maker: Imperial
Color: Amethyst
Green
Marigold

Note: Reproduced by Imperial and
has "IG" logo.

**23. Pattern: PLAIN /
GRAPE & CABLE**

Maker: Northwood
Color: Amethyst
Green (R)
Marigold (R)

**24. Pattern: PLAIN /
GRAPE & CABLE**

Maker: Northwood
Color: Amethyst
Green
Marigold



**13. PLAIN / DIAMOND &
OVALS**



**14. DOLPHINS ROSILAND /
WIDE PANEL**



15. PLAIN / DIAMOND BLOCK



**16. PLAIN / DIAMOND &
DAISY CUT**



**17. WIDE PANEL / FANCY
FLOWERS**



18. PLAIN / FERRIS WHEEL



19. PLAIN / FILE & FAN



**20. WIDE PANEL /
FLOWERING VINE**



21. PLAIN / FLUTE & CANE



**22. PLAIN / FOUR SEVENTY
FOUR**



23. PLAIN / GRAPE & CABLE



24. PLAIN / GRAPE & CABLE

25. Pattern: PLAIN / GRAPE & CABLE SWEETMEAT

Maker: Northwood

Color: Amethyst
Blue (R)
Clambroth
Marigold (R)

Note: Two Sweetmeats are known in blue. A Whimsey compote exists in Amethyst, it is made from the base of the Sweetmeat compote.

26. Pattern: GRAPE WREATH / WIDE PANEL

Maker: Millersburg

Color: Amethyst (R)
Green (R)
Marigold (R)

27. Pattern: HARVEST POPPY / PLAIN

Maker: Northwood

Color: Amethyst (R)
Blue (R)
Green (R)
Marigold (R)

28. Pattern: HEARTS & FLOWERS

Maker: Northwood

Color: Amethyst (R)
Aqua Opal (R)
Blue (R)
White
Green (R)
Ice Blue (R)
Ice Green (R)
Lime Green (R)
Marigold (R)
Teal Blue (R)
Cobalt Opal (R)
Marigold/
Milkglass (R)

Note: Base & stem have hearts and flowers pattern. Exterior of bowl may be plain, ribbed or wide panel.

30. Pattern: PLAIN / HOBSTAR & FEATHER

Maker: Millersburg

Color: Amethyst (R)
Green (R)
Marigold (R)

31. Pattern: PLAIN / INVERTED THISTLE

Maker: Cambridge

Color: Green (R)

Note: Only one compote known.

32. Pattern: PLAIN / INVERTED STRAWBERRY

Maker: Cambridge

Color: Amethyst (R)
Blue (R)
Green (R)
Marigold (R)

33. Pattern: IRIS / PLAIN

Maker: Fenton

Color: Amethyst
Blue
Green
Marigold
White (R)

34. Pattern: MEDALLION & CHRYSANTHUMS / CHERRIES

Maker: Fenton

Color: Amethyst (R)
Blue
Green (R)
Marigold

Note: This Compote is known as "Mikado".



25. PLAIN / GRAPE & CABLE SWEETMEAT



26. GRAPE WREATH / WIDE PANEL



27. HARVEST POPPY / PLAIN PANEL



28. HEARTS & FLOWERS



29. PLAIN / HOBSTAR BAND



30. PLAIN / HOBSTAR & FEATHER



31. PLAIN / INVERTED THISTLE



32. PLAIN / INVERTED STRAWBERRY



33. IRIS / PLAIN



34. MEDALLION & CHRYSANTHUMS / CHERRIES

35. Pattern: PLAIN / OCTAGON

Maker: Imperial
Color: Green (R)
Marigold

Note: This pattern was reproduced by Imperial and contains the IG mark.

36. Pattern: PLAIN / OHIO STAR

Maker: Millersburg
Color: Marigold (R)

37. Pattern: PEACOCK AT THE FOUNTAIN

Maker: Northwood
Color: Amethyst Ice Blue (R)
Aqua Opal (R) Ice Green (R)
Blue (R) Marigold
Green (R) White

Note: Two compotes are known in green. The base and stem have Hearts & Flowers pattern. Exterior of bowl may be Plain, Ribbed or Wide Panel.

38. Pattern: PEACOCK & URN / WIDE PANEL

Maker: Millersburg
Color: Amethyst (R)
Green (R)
Marigold (R)
Vaseline (R)

39. Pattern: PERSIAN MEDALLION / PERSIAN MEDALLION

Maker: Fenton
Color: Amethyst (R) Marigold
Blue (R) White (R)
Green (R) Teal (R)
Note: Compote was reproduced and is marked "Fenton".

40. Pattern: PLAIN / PINEAPPLE

Maker: English/Sowerby Glass Co.
Color: Amethyst
Marigold

41. Pattern: PLAIN / PLAIN

Maker: Fenton
Color: Amethyst
Green
Marigold
Note: Compote is made from Buttermilk Goblet.

42. Pattern: PLAIN / PLAIN

Maker: Imperial
Color: Blue
Red
White
Note: This compote is known as "Jewels" and is probably stretch glass.

43. Pattern: PLAIN / PLAIN

Maker: Northwood
Color: Amethyst Marigold
Blue White
Green
Note: This pattern is also known as Rainbow.

44. Pattern: PLAIN / PROPELLAR

Maker: Imperial
Color: Marigold (R)
Note: Pattern was made in a large and small compote.

45. Pattern: POPPY / POTPOURRI

Maker: Millersburg
Color: Amethyst (R)
Green (R)
Marigold (R)
Note: Also made with a flattened top instead of bowl shape and is seldom seen.

46. Pattern: RAYS / PLAIN

Maker: Fenton
Color: Marigold/Milkglass
Note: This pattern is referred to as "Sunray".



35. PLAIN/OCTAGON



36. PLAIN/OHIO STAR



37. PEACOCK AT THE FOUNTAIN



38. PEACOCK & URN / WIDE PANEL



39. PERSIAN MEDALLION / PERSIAN MEDALLION



40. PLAIN / PINEAPPLE



41. PLAIN / PLAIN



42. PLAIN / PLAIN



43. PLAIN / PLAIN



44. PLAIN / PROPELLAR



45. POPPY / POTPOURRI



46. RAYS / PLAIN

47. Pattern: ROSALIND/PLAIN

Maker: Millersburg
Color: Amethyst (R)
 Green (R)
 Marigold (R)

Note: The larger 9inch example has a wide panel exterior.

48. Pattern: PLAIN/ROSE PANELS

Maker: European
Color: Marigold

49. Pattern: SAILBOATS/PLAIN

Maker: Fenton
Color: Marigold
Note: Stem is ribbed/stippled.



47. ROSALIND/PLAIN



48. PLAIN/ROSE PANELS



49. SAILBOATS/PLAIN

50. Pattern: SCROLL EMBOSSED/HOBSTAR & FILE

Maker: English
Color: Amethyst
 Marigold

Note: The outside pattern is also referred to as Eastern Star.

51. Pattern: PLAIN/STAR & FILE

Maker: Imperial
Color: Amethyst
 Clambroth
 Green
 Marigold

52. Pattern: STREAM OF HEARTS/PERSIAN MEDALLION

Maker: Fenton
Color: Marigold



50. SCROLL EMBOSSED/HOBSTAR & FILE



51. PLAIN/STAR & FILE



52. STREAM OF HEARTS/PERSIAN MEDALLION

53. Pattern: PLAIN/TAFFETA LUSTRE

Maker: Fostoria
Color: Black Amethyst

54. Pattern: VINTAGE/PLAIN

Maker: Fenton
Color: Amethyst
 Blue
 Green
 Marigold



53. PLAIN/TAFFETA LUSTRE



54. VINTAGE/PLAIN

55. Pattern: TULIP WIDE PANEL/PLAIN

Maker: Millersburg
Color: Amethyst (R)
 Green (R)
 Marigold (R)

56. Pattern: PLAIN/WHEAT

Maker: Northwood
Color: Amethyst (R)
 Green (R)
Note: Referred to as a Sweetmeat.
 One known in each color.

57. Pattern: WILD FLOWER/WIDE PANEL

Maker: Millersburg
Color: Amethyst (R)
 Green (R)
 Marigold (R)
 Vaseline (R)



55. TULIP WIDE PANEL/PLAIN



56. PLAIN/WHEAT



57. WILD FLOWER/WIDE PANEL