

The Plate Collector's Handbook

by Ted Hake and E. Ward Russell



A price guide
to thousands of collectible plates
issued from 1895 to date.

\$ 7⁹⁵

The Plate Collector's Handbook

by Ted Hake and E. Ward Russell

A price guide
to thousands of collectible plates
issued from 1895 to date.

DAFRAN HOUSE PUBLISHERS INC.
42 West 39th Street, N.Y., N.Y. 10018

DAFRAN
HOUSE

A SUBSIDIARY OF
Don Hirschhorn
INCORPORATED
OLD BETHPAGE, N.Y. 11686


PRINTED IN U.S.A.

Library of Congress Catalog Card Number 73-87897

THE AUTHORS

Since 1970, Ted Hake has specialized in researching and writing about current collectors items. His other authorative price guides include THE BUTTON BOOK, AN ILLUSTRATED GUIDE TO 5000 PINBACK BUTTONS; A TREASURY OF ADVERTISING COLLECTIBLES; and the recently published full color ENCYCLOPEDIA OF POLITICAL BUTTONS.

Mr. Hake has been a "collectibles" dealer since 1965 when he began to issue the first mail auction and sales catalogues devoted to all types of pinback buttons, radio premiums, comic character items, and all types of advertising memorabilia. He and his wife, Jonell, live and operate their Americana & Collectibles business in York, Pennsylvania.

E. Ward Russell has been an active and avid collector most of his life. He is well known as a coin collector, carnival glass collector and plate collector. His wife, Evelyn, a native of Denmark, had already begun collecting the Royal Copenhagen plates when they were married. This sparked his interest in collectors' plates which ultimately included the Bing and Grondahl and Railroad China.

Out of a combined interest in carnival glass and collectors' plates, grew an idea for a series known as "America The Beautiful." These iridescent glass plates depicting various famous scenes in America were designed by Mr. Russell and produced for him in very limited editions by the Imperial Glass Corp. Combining an interest in coins and plates, Mr. Russell was largely responsible for the design and production of the crystal Coin plate which depicts the 1964 series of United States coins.

Mr. Russell is the founder and President Emeritus of the American Carnival Glass Association, a member of the American Numismatic Association (30 years), Past President of the Washington Numismatic Society (1952-53), a charter member of the Old Time Assay Commissioners Society (each member appointed by a President of the U.S.), was appointed by President Eisenhower to the 1954 Annual Assay Commission, and is a charter member of the International Plate Association.

ALICE IN WONDERLAND

1973 Alice in Wonderland

Silver \$100.00
Bronze \$100.00
Copper \$100.00

AMERICA HOUSE

1972 America House, Columbus, Sterling silver
Bronze

\$175.00
\$ 85.00

AMERICA THE BEAUTIFUL

These 10" plates are a very limited edition series commemorating national shrines and well known landmarks and are hand made of iridescent glass. Each plate is signed and dated. The plates are designed by E. Ward Russel of Silver Spring, Maryland, co-author of this book.

1969 The Capitol, Washington D.C., red iridized glass
1970 Mt. Rushmore, green iridized glass

\$47.50
\$42.50



AMERICA THE BEAUTIFUL / 1969



AMERICA THE BEAUTIFUL / 1970

COLLECTORS WEEKLY

1971 Remington Scout plate	\$8.00
1972 Americana plate	\$8.00

CROWN DELFT

This Holland factory uses the distinctive Delft Blue style to make their attractive 7" porcelain plates. The Mother's Day series pictures animals in typical Dutch rural scenes, and the Father's Day series show famous old sailing ships. The Christmas plates picture Dutch winter scenes.

1970 Mother's Day	\$12.50
1971 Mother's Day	\$12.00
1972 Mother's Day	\$12.00
1970 Father's Day	\$12.50
1971 Father's Day	\$12.00
1972 Father's Day	\$12.00
1969 Christmas	\$15.00
1970 Christmas	\$12.00
1971 Christmas	\$12.00
1972 Christmas	\$12.00



CROWN DELFT /
MOTHER'S DAY 1971

CROWN STAFFORDSHIRE

1972 Christmas	\$25.00
1973 Christmas	\$30.00
1973 Mother's Day	\$30.00
1974 Mother's Day	\$32.50

FENTON

The Fenton trademark is the old glass worker which was depicted on their first commemorative plate, issued in 1970 to commemorate America's first industry—glass—which got its start in Jamestown, Va. in 1608. The trademark glass worker is a "finisher." Fenton's modern plant produces glass with a blend of centuries old skills and tools and computer age glass technology. Some of their other lines include Burmese glass which they recently introduced, milk glass, and crystal in many colors and designs.

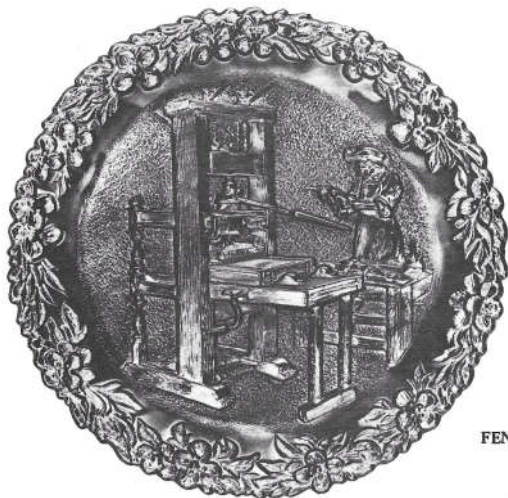
The management of the company has remained in the family. The President of the firm is Frank M. Fenton, and the Executive Vice President is William C. Fenton, both sons of the founder. The company is equally proud of its facilities and its craftsmen. Customers are invited to tour the plant and watch fine glass made by hand.

Fenton issued their first edition commemorative and Christmas plates in 1970, adding a Mother's Day series in 1971. The 8" Christmas plates form a series entitled "Christmas in America." They are available in either carnival or blue marble satin finish, as is the first edition Mother's Day plate. The 1972 Mother's Day plate is also done in white satin. The Commemorative plates, available only in carnival, portray early American craftsmen. The "Glass Craftsmen of Jamestown" was the first, followed by the "Printer of Cambridge, Mass." in 1971 and the "Village Blacksmith" from Longfellow's poem in 1972. Fenton also manufactured the 1972 "Famous Lovers" Valentine's Day plate.

1970 American Craftsman series, "Glassmaker"	\$10.00
1971 American Craftsman series, "Printer"	\$10.00
1972 American Craftsman series, "Blacksmith"	\$10.00
1973 American Craftsman series, "Shoemaker"	\$10.00
1971 Mother's Day	\$10.00
1972 Mother's Day	\$10.00
1973 Mother's Day	\$10.00
1972 Valentine's Day, "Romeo & Juliet"	\$15.00
1970 Christmas, "Little Brown Church"	\$12.50
1971 Christmas, "Old Brick Church"	\$10.00
1972 Christmas, "Two-Horned Church"	\$10.00
1973 Christmas, "St. Mary's in the Mountains"	\$10.00
Open stock, Anniversary plate	\$10.00
Open stock, 25th Wedding Anniversary	\$10.00



FENTON/GLASSMAKER 1970



FENTON / PRINTER 1971



FENTON / BLACKSMITH 1972



FENTON / SHOEMAKER 1973



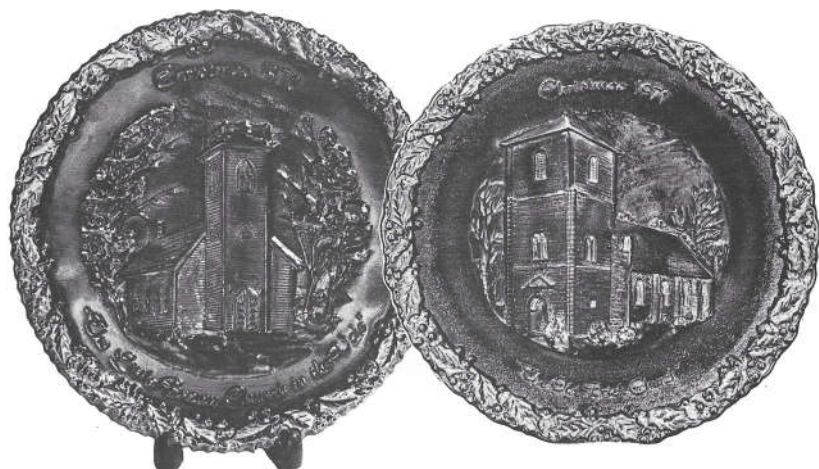
FENTON / MOTHER'S DAY 1971



FENTON / MOTHER'S DAY 1972



FENTON / MOTHER'S DAY 1973

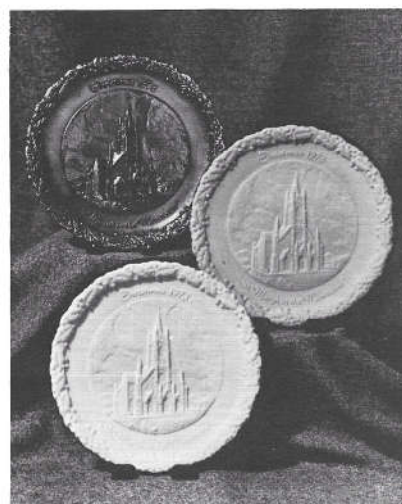
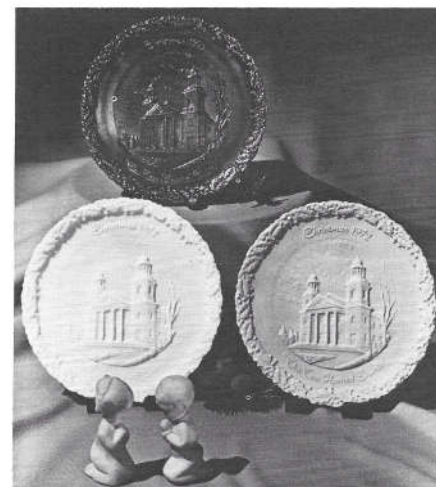


FENTON / CHRISTMAS 1970

48

FENTON / CHRISTMAS 1971

FENTON / CHRISTMAS 1972



FENTON / CHRISTMAS 1973

49

FOCKE & MELTZER

1969 "Moon Plates" set of 3	\$100.00
1970 "Moon Plates" set of 4	
1969 Val St. Lambert, "Rembrandt"	\$ 20.00
1970 Val St. Lambert, "Pilgrim Fathers"	\$ 20.00
1971 Val St. Lambert, "Hendrick de Keyzer"	\$ 20.00

FONTANA

The 1972 Alfonse Fontana of Italy Christmas plate is unlike any other on the market. Made of kaolin (the main ingredient of porcelain) it features small, multi-colored, fully three-dimensional figures mounted on an 8" white background. The simple, colorful scenes around them bring out the motif of the plate, and the unconventional "crimped" edge gives the design unusual vividness. The plate is completely made by the artisans of Creative World.

1972 Christmas plate	\$37.50
1973 Christmas	\$35.00
1974 Christmas	\$35.00
1972 Mother's Day	\$35.00
1973 Mother's Day	\$33.00

FOSTORIA

This company has been producing a whole range of fine glass and crystal giftware for many years. Now they have entered the limited edition market with two series of crystal plates. The first series, entitled "American Milestones," commemorates great events of American history beginning with Betsy Ross' creation of the country's first flag. The second series commemorates the fifty states, each on an artistically designed and etched plate.

1971 American Milestones, "Betsy Ross"	\$16.00
1972 American Milestones, "Frances S. Key"	\$13.50
1973 American Milestones, "Washington"	\$13.00
1973 State Series: California, New York, Ohio, Florida, Pennsylvania, Massachusetts, Hawaii, Texas, Michigan	each \$13.00



FOSTORIA /
BETSY ROSS 1971

1972 Olympiade

FRANCONIA

\$20.00

IMPERIAL GLASS CORPORATION

The Imperial Glass Corporation's factory was built in Bellaire, Ohio in 1902, one of the many built in the Ohio River area near Wheeling, West Virginia. In the beginning the company produced low priced glass, but over the years they steadily improved their quality, design, styling, production techniques and merchandising, until they became recognized as one of the best glass factories in America.

While some of their competitors closed their factories after World War II, Imperial continued to operate steadily. Since 1940 Imperial has bought the Central Glass Works, the Heisey Glass Co., and the Cambridge Glass Co.

Imperial issued its first limited edition Christmas plate in 1970. This series of 9" plates is available in both carnival and crystal glass. Based on the popular song, "The Twelve Days of Christmas," each plate has a 1½" border featuring all twelve of the "gifts" with one of them expanded and featured in the center of the plate each year. In 1971, Imperial issued the first in a series of 9" crystal Coin plates. The 1971 plate boasts a fine reproduction of the complete set of U.S. coins for 1964—the last year solid silver was used. In 1972, the plate features a set of 1971 coins with the Eisenhower dollar in the center.

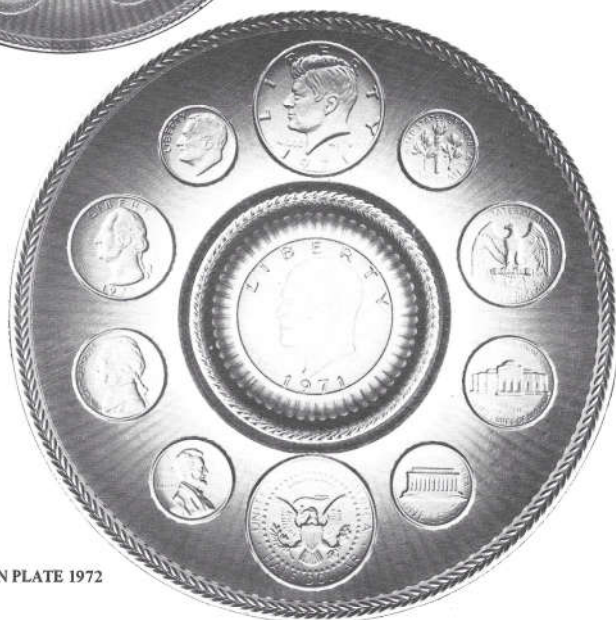
1970 Christmas, "Partridge in a Pear Tree"	\$10.00
1971 Christmas, "Two Turtle Doves"	\$10.00
1972 Christmas, "Three French Hens"	\$10.00
1973 Christmas, "Four Colly Birds"	\$12.00
1974 Christmas, "Five Golden Rings"	\$12.00
1971 Coin plate, 1964 coins, J F K center	\$16.00
1972 Coin plate, 1971 coins, Eisenhower dollar center	\$12.50



IMPERIAL / CHRISTMAS 1971



IMPERIAL / COIN PLATE 1971



IMPERIAL / COIN PLATE 1972

NIDAROS

This Norwegian company produces a limited edition plate each year portraying a different landmark of "Historic Norway."

1970 Nidaros Cathedral	\$12.50
1971 Stave Church	\$13.00
1972 Gokstad Viking Ship	\$13.00
1973 Akershus Castle	\$14.50

NATION'S CAPITOL CARNIVAL GLASS CLUB

1969 U.S. Capitol	\$45.00
1974 U.S. Capitol	\$35.00



NATION'S CAPITOL CARNIVAL GLASS CLUB 1969

SMITH GLASS CO.

This well known American glass manufacturer produces a number of items for the collectors' market—not only in glass, but in pewter and silver as well. Their Famous Americans, Coin and Christmas plates are in amethyst carnival glass with the designs in relief. The first two have a scalloped border, while the Christmas plate is bordered with holly wreaths. The pewter and silver plates are made in sharply detailed relief at the famous Wendell August Forge.

1971 Coin plate, Morgan silver dollar	\$10.00
1971 Famous Americans, John F. Kennedy	\$10.00
1971 Famous Americans, Abraham Lincoln	\$10.00
1972 Famous Americans, Jefferson Davis	\$10.00
1972 Famous Americans, Robert E. Lee	\$10.00
1971 Christmas, "Family at Christmas"	\$10.00
1972 Christmas, "Flying Angel"	\$10.00

WENDELL AUGUST FORGE PLATES

1971 Presidential series, J.F.K. Silver, \$200, Pewter \$40.00
1972 Presidential series, Lincoln, Silver \$200.00, Pewter \$40.00
1972 Wings of Man series, Columbus' ships, silver \$200.00, Pewter \$40.00
1973 Wings of Man series, Conestoga Wagons, Silver \$200.00, Pewter \$40.00
1972 Great Moments series, Landing of Pilgrims, Silver \$200.00, Pewter \$40.00
1973 Great Moments series, First Thanksgiving, Silver \$200.00, Pewter \$40.00



SMITH GLASS CO. / COIN PLATE 1971



SMITH GLASS CO. / FAMOUS AMERICANS 1972



SMITH GLASS CO. / CHRISTMAS 1971



SMITH GLASS CO. / PRESIDENTIAL 1971



Mr. Hake has been a "collectibles" dealer since 1965 when he began to issue the first mail auction and sales catalogues devoted to all types of pinback buttons, radio premiums, comic character items, and all types of advertising memorabilia. He and his wife, Jonell, live and operate their Americana & Collectibles business in York, Pennsylvania.



E. Ward Russell has been an active and avid collector most of his life. He is well known as a coin collector, carnival glass collector and plate collector. His wife, Evelyn, a native of Denmark, had already begun collecting the Royal Copenhagen plates when they were married. This sparked his interest in collectors' plates which ultimately included the Bing and Grondahl and Railroad China.

