

Chop Plates

CHOP PLATES

This notebook section covers 10 inch or greater diameter plates, commonly called CHOP PLATES. The PATTERN identification is listed as Inside/Outside pattern.

Several of the different pattern colors are listed as (Rare), but, this is not intended to say the other colors or patterns are easy to find. Most of these plates, regardless of Color or Pattern, are not easily obtainable.

As usual, this notebook section is made possible with the help of several interested Collectors who supplied photographs or provided their plate(s) for photographing. Special thanks to Helen James for providing a list of Plates; Ray & Rae Ann Hitchcock, John & Lucile Britt and Don & Connie Moore for editing and supplying necessary information about the different patterns.

Thanks to the following members for their help in supplying photographs and information of their plates:

John & Lucile Britt	Manhattan, KS
Bob & Ernestine Brooks	Windsor, Canada
Bob & Donna Courts	Batavia, OH
Harold & Arline Cox	Fort Wayne, IN
L.L. & Jane Dinkins	Houston, TX
Bob & Dorothy Gallo	Pontiac, MI
Bob & Rosa Grissom	Raytown, MO
Ray & Rae Ann Hitchcock	Winterset, IA
Helen James	Olathe, KS
R.D. & Dorothy Kavanaugh	Kansas City, MO
Don Kime	Haysville, KS
Curtis & Geneva Knight	Atlanta, GA
Roland Kuhn	Haysville, KS
Don LaCock	Delia, KS
Don & Connie Moore	Alameda, CA
Carl & Fern Schroeder	Kendall, WI
I.L. & Deloris Versprille	Rochester, NY
Floyd & Cecil Whitley	Houston, TX

This information is assembled and presented by the HEART OF AMERICA CARNIVAL GLASS ASSOCIATION for the educational benefit of the Carnival Glass Collector.

Bob Grissom
Notebook Chairman



Fantail/Butterfly & Berry

**1. Pattern: ACANTHUS/
PANELS**

Maker: Imperial
Color: Marigold
Smoke

**2. Pattern: BIRDS &
CHERRIES/PLAIN**

Maker: Fenton
Color: Blue (Rare)
Marigold (Rare)
Note: Only one plate known in
each color.

**3. Pattern: CHERRY CHAIN/
ORANGE TREE**

Maker: Fenton
Color: Marigold (Rare)
White (Rare)

**4. Pattern: CHRYSANTHE-
MUM/FINE RIB**

Maker: Imperial
Color: Amber (Rare)
Amethyst
Green (Rare)
Marigold
Smoke (Rare)
White (Rare)
Note: Also, referred to as Nu-Art
Plate. This plate has been
reproduced; the new plates
have a plain back.

**5. Pattern: PLAIN/COSMOS &
CANE**

Maker: U.S. Glass
Color: Honey Amber (Rare)
White (Rare)
Note: Pattern is on backside of
plate.

**6. Pattern: FANTAIL/BUTTER-
FLY & BERRY**

Maker: Fenton
Color: Blue (Rare)
Note: This plate has ball feet;
only two known.

**7. Pattern: FARMYARD/
JEWELED HEART**

Maker: Dugan
Color: Amethyst (Rare)
Note: Only one known. Edge
turns up like Ice Cream
bowls.

**8. Pattern: PLAIN/FLORAL &
OPTIC**

Maker: Imperial
Color: Marigold
Red
White
Note: Has short squarish feet.

**9. Pattern: FOUR FLOWERS/
PLAIN OR SODA
GOLD**

Maker: Dugan
Color: Amethyst
Marigold
Peach Opal
Note: Also known as Pods &
Posies.

**0. Pattern: FOUR FLOWERS
VARIANT/PANELS
& THUMBPRINT**

Maker: Eda (Sweden)
Color: Amethyst
Green
Marigold
Note: The backside pattern on
this plate is not on any
other piece of Carnival.

**11. Pattern: GARDEN PATH
VARIANT/
SODA GOLD**

Maker: Dugan
Color: Amethyst (Rare)
Marigold (Rare)
Peach Opalescent (Rare)

**12. Pattern: HANGING
CHERRIES/WIDE
PANEL**

Maker: Millersburg
Color: Amethyst (Rare)
Green (Rare)
Marigold (Rare)



1. ACANTHUS/PANELS



4. CHRYSANTHEMUM/
FINE RIB



7. FARMYARD/
JEWELED HEART



10. FOUR FLOWERS
VARIANT/PANELS &
THUMBPRINT



2. BIRDS & CHERRIES/
PLAIN



5. PLAIN/COSMOS & CANE



8. PLAIN/FLORAL & OPTIC



11. GARDEN PATH VARIANT/
SODA GOLD



3. CHERRY CHAIN/
ORANGE TREE



6. FANTAIL/BUTTERFLY
& BERRY



9. FOUR FLOWERS/
PLAIN OR SODA GOLD



12. HANGING CHERRIES/
WIDE PANEL

3. Pattern: HANGING CHERRIES/PLAIN
Maker: Millersburg
Color: Amethyst (Rare)
Note: Only One of these plates known. This is a Fenton type edge but this plate is believed to be made by Millersburg.

14. Pattern: HATTIE/HATTIE
Maker: Imperial
Color: Amber (Rare)
 Amethyst (Rare)
 Clambroth
 Green
 Marigold (Rare)
Note: This plate has same pattern on Front & Back.

15. Pattern: HEAVY GRAPE/PLAIN
Maker: Imperial
Color: Amber
 Amethyst
 Green
 Marigold
 Smoke

6. Pattern: HEAVY WEBB/ GRAPE CLUSTERS
Maker: Dugan
Color: Peach Opal (Rare)
Note: Only one plate known.

17. Pattern: HOMESTEAD/ FINE RIB
Maker: Imperial
Color: Amber
 Amethyst
 Blue (Rare)
 Green (Rare)
 Marigold
 Smoke (Rare)
 White (Rare)
Note: Also known as Nu-Art plate. This plate has been reproduced; the new plates have a plain back.

18. Pattern: IMPERIAL JEWELS/PLAIN
Maker: Imperial
Color: Red (Rare)

9. Pattern: PLAIN/INVERTED THISTLE
Maker: Cambridge Glass Co.
Color: Amethyst (Rare)
Note: Only one known. Pattern on exterior only.

20. Pattern: LITTLE FISHES/ PLAIN
Maker: Fenton
Color: Marigold (Rare)
Note: Only one Plate Known.

21. Pattern: LITTLE FLOWERS/ WIDE PANEL
Maker: Fenton
Color: Marigold

2. Pattern: PLAIN/PANELS
Maker: Imperial
Color: Marigold

23. Pattern: PLAIN/OVAL & ROUND
Maker: Imperial
Color: Marigold

24. Pattern: PEACOCK & URN/ PANELS
Maker: Millersburg
Color: Amethyst (Rare)
 Marigold (Rare)



13. HANGING CHERRIES/ PLAIN



14. HATTIE/HATTIE



15. HEAVY GRAPE/PLAIN



16. HEAVY WEBB/ GRAPE CLUSTERS



17. HOMESTEAD/FINE RIB



18. IMPERIAL JEWELS/PLAIN



19. PLAIN/INVERTED THISTLE



20. LITTLE FISHES/PLAIN



21. LITTLE FLOWERS/ WIDE PANEL



22. PLAIN/PANELS



23. PLAIN/OVAL & ROUND



24. PEACOCK & URN/PANELS

25. Pattern: PEACOCK & URN / PANELS

Maker: Northwood

Color: Amethyst
Ice Green (Rare)
Marigold (Rare)
White (Rare)

Note: Only One White, Marigold and Ice Green ones known.

26. Pattern: PERSIAN GARDEN / BASKETWEAVE VARIANT

Maker: Dugan

Color: Amethyst (Rare)
Peach Opalescent (Rare)
White (Rare)

27. Pattern: PERSIAN MEDALLION / PLAIN

Maker: Fenton

Color: Blue

28. Pattern: PLAIN / ROSE GARDEN

Maker: Eda (Sweden)

Color: Blue (Rare)

Note: Only one known. Pattern is on Backside.

29. Pattern: PLAIN / SODA GOLD

Maker: Imperial

Color: Marigold

Note: Maybe sometimes referred to as Tree-of-Life pattern.

30. Pattern: STAG & HOLLY / WIDE PANEL

Maker: Fenton

Color: Marigold

Note: This plate has ball feet.

31. Pattern: PLAIN / STAR MEDALLION

Maker: Imperial

Color: Clam broth
Marigold

32. Pattern: TWO FLOWERS / WIDE PANEL

Maker: Fenton

Color: Marigold

Note: This plate has ball feet.

33. Pattern: PLAIN / WIDE PANEL

Maker: Imperial

Color: Marigold
Red (Rare)

34. Pattern: WISHBONE / BASKETWEAVE

Maker: Northwood

Color: Amethyst
Green (Green)
Marigold

35. Pattern: WISHBONE & SPADES / PLAIN

Maker: Dugan

Color: Amethyst
Peach Opalescent (Rare)
Note: Only One known in Peach Opalescent.

36. Pattern: WATERLILY / PLAIN

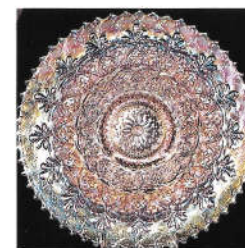
Maker: Fenton

Color: Marigold (Rare)

Note: Only one known. Plate has ball feet.



25. PEACOCK & URN / PANELS



26. PERSIAN GARDEN / BASKETWEAVE VARIANT



27. PERSIAN MEDALLION / PLAIN



28. PLAIN / ROSE GARDEN



29. PLAIN / SODA GOLD



30. STAG & HOLLY / WIDE PANEL



31. PLAIN / STAR MEDALLION



32. TWO FLOWERS / WIDE PANEL



33. PLAIN / WIDE PANEL



34. WISHBONE / BASKETWEAVE



35. WISHBONE & SPADES / PLAIN



36. WATERLILY / PLAIN

37. *Pattern:* BLACKBERRY
WREATH/PLAIN

Maker: Millersburg

Color: Amethyst (Rare)
Marigold (Rare)

38. *Pattern:* PLAIN/GRAPE &
CABLE

Maker: Northwood

Color: Amethyst (Rare)
Note: About 14 inches diameter.
Made from Centerpiece
Bowl; Pattern is on
backside.

39. *Pattern:* GRAPE & CABLE/
BASKETWEAVE

Maker: Northwood

Color: White (Rare)
Note: Made from Master Ice
Cream bowl.

40. *Pattern:* PLAIN/LOUISA

Maker: Fenton

Color: Marigold (Rare)

Note: Only one known.

*Currently photographs not available.