

THE ANTIQUE TRADER[®]

ISSN: 0161-8342

Since 1957

"America's Widest Used Publication on
Antiques & Collector's Items"
Volume 29, Issue 8

February 20, 1985

Single Copy \$1.00

WEEKLY

Dubuque, Iowa 52001



Carnival Glass Pitchers see page 71

**NEWSPAPER
HANDLING**

-DIGIT 465

7 85 T
MRK0014

GGV

IN 46539

HARPER WOODS, MICH.

Antique Show and Sale - 8 Mile at Kelly Road - For Information Call: (313) 779-3416

★ Eastland Mall ★

FEB. 21st - FEB. 24th

WARREN, MICH.

Antique Show and Sale - Dequindre at 12 Mile Road - Maple Bunch Promotions

★ Universal Mall ★

MAR. 3rd - MAR. 10th

SHANNON ANTIQUE VILLAGE

1116 Castle Shannon Blvd., corner of Rte. 88 & Castle Shannon Blvd., Pittsburgh, Pa. (412) 563-7475

Open 7 days a week, Tuesday & Thursday 10 to 9 p.m., other days 10 to 5 p.m.

20 Dealers with 20,000 sq. ft. - Visa & Master Charge - Wholesale & Retail

Special Dealer Offer

Complete Kit

\$15.00 F.O.B.

Visa - Master - C.O.D.

Ask Your



BRIWAX

FREE SAMPLE

Write: BRIWAX INTERNATIONAL

Post Office Box 3327, Redwood City, CA 94064

Toll Free 800 227-9744

NEW DALLAS SHOWROOM/WAREHOUSE
1461 Wycliff Ave., Dallas, TX 75207
214/630-7888

LOS ANGELES SHOWROOM/WAREHOUSE
17015 Kingsview Ave., Carson, CA 90746
213/327-3477

A.A. IMPORTING CO., INC.

Designers and Importers of Fine Classical Antique Reproductions

HEADQUARTERS

7700 Hall Street St. Louis, MO 63147

314/383-8800 TOLL FREE 1-800/325-0602

SAN FRANCISCO WAREHOUSE/
SHOWROOM 106 Sylvester Rd., South San
Francisco, CA 94080 415/589-4422

DANIA, FLORIDA WAREHOUSE/SHOW-
ROOM, 1916 Tigertail Road, Dania, Fla.
33004 (305) 922-5700

EXPO CENTER

EXIT 307 OFF I-5

Don Wirfs & Associates
(503) 246-9996

AMERICA'S LARGEST INDOOR ANTIQUES & COLLECTIBLES SALE

PORTLAND, OREGON

SATURDAY, MARCH 2, 8 - 7; SUNDAY, MARCH 3, 9 - 5

OVER FIVE ACRES
OF ANTIQUES PLUS
COLLECTIBLES
ALL INDOORS

"Collecting Precious Moments Paraphernalia"

New Guide by Rosie Wells - \$5.00

PRECIOUS COLLECTIBLES, R#1A, Canton, Ill. 61520

Hosts for the: June 14-16 International Convention for Precious Moments Collectors

Shiny
glass
Greeting
cards



J & D Buttons

Rare Carnival Glass Pitchers From Across the Nation & Around the World

by Don Moore

When we listen to stock market reports, we hear that certain issues are "depressed" and certain groups of stocks are referred to as "cyclical" in nature. The same thing happens in the Carnival world. The past couple of years, pastels, red and anything with an opal edge have been the hot "issues," while Millersburg, *Grape & Cable*, and water pitchers have been "depressed" from their previous highs. Almost everything in Carnival has its cycle. Plates are an excellent example. Five or six years ago they were "riding high." Then they went into a slump and it is only in the past year or so that they have again come on like gang-busters. There is evidence that water pitchers are also staging a rally. I hope this brief focus on some of the rare pitchers will help the cause along. To my way of thinking, water sets have always symbolized collecting at its best. It is unfortunate that water pitchers have suffered from the excesses of the middle 1970s when prices got out of hand for a few years. Their recent resurgence appears to be on a more reasonable and stable basis.

The Fenton Art Glass Co. is "king of the hill" when it comes to the number of water pitchers produced. They made water sets in Carnival in approximately 30 different patterns, followed by Northwood with some 25, Imperial with 20, Dugan with 15, and Millersburg with about 10. U.S. Glass, Cambridge, Westmoreland and the foreign makers lag far behind. I was somewhat surprised to realize that Northwood wasn't the leader in the water pitcher parade. This is probably because many of the patterns previously attributed to Northwood are now known to have been made by Dugan.

Don't worry now that I intend to review each of the water pitchers made by each of the various companies. Since the emphasis here is on rarity I will list the top 5 pitchers of each company in their order of rarity as I see it. The estimate as to value is for the pitcher alone. My

ranking is based on the rarest color in each pattern.

FENTON ART GLASS CO. — WILLIAMSTOWN, W. VA.

1. *LILY OF THE VALLEY* — blue \$4,500. Only 5 or 6 of these pitchers are known. The only one known in marigold was lost in the 1971 Sylmar, California earthquake that destroyed the Poling collection. Tumblers are known in both marigold and blue.

2. *BLACKBERRY BLOCK* — vaseline \$2,750 (also white, \$1,200; green, \$750; blue, \$700; amethyst, \$650; marigold, \$450) Only one pitcher in vaseline is known in this pattern and in fact, I don't know of a pitcher in this color in any other pattern either.

3. *STRAWBERRY SCROLL*, either blue or marigold — \$1,600. The marigold is more rare but the blue will sell for at least as much.

4. *STARFLOWER* — marigold, \$1,500 (also blue, \$1,000). No tumblers are known in this pattern.

5. *TEN MUMS* — white, \$1,200; (also blue, \$900; marigold, \$400).

Mention should be made of a few of these other outstanding Fenton pitchers: *Fluffy Peacock*, *Milady*, *Blackberry*, *Orange Tree Orchard*, *Fentonia*, *Leaf Tiers*, *Daisy & Plume*, *Panelled Dandelion*, *Butterfly & Berry*, and *Apple Tree*.

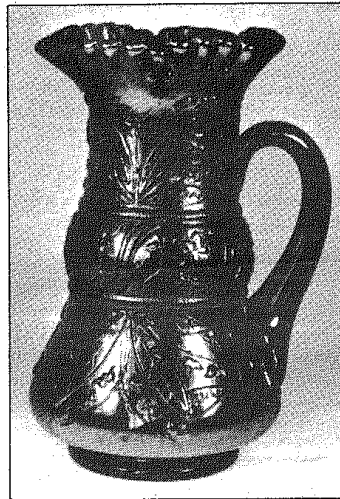
THE NORTHWOOD CO. — WHEELING, W. VA.

1. *PANELLED HOLLY* — purple, \$8,500. Only this one example is known. It is owned by the Loeschers in Wisconsin.

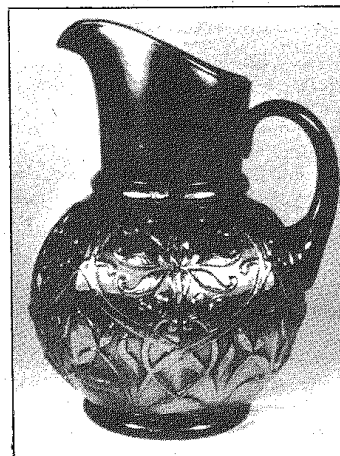
2. *WISTERIA* — ice blue, \$3,500 (also white, \$2,500). Only 2 or 3 known in ice blue and 5 or 6 in white. Ice green tumblers have been found, but no pitcher.

3. *GRAPE ARBOR* — ice green \$3,250 (also blue, \$2,500; ice blue, \$1,200; white, \$800; purple, \$600; marigold, \$250).

4. *GRAPE & CABLE* — ice green, \$3,000 — both tankard and regular size; (also green tankard, \$2,750; purple tankard, \$750; marigold



"Lily of the Valley" [Fenton] — blue, \$4,500.



"Wishbone" [Northwood] — \$1,000

tankard, \$500). Three ice green tankards and three ice green regular size pitchers known.

5. *ORIENTAL POPPY* — blue \$2,500; (also ice green, \$2,000; ice blue, \$1,750; white, \$1,000; green

\$850; purple, \$650; marigold, \$450). Sapphire blue tumblers are known but I'm unaware of a pitcher.

In the Northwood runner-up category, we must mention *Wishbone*, *Raspberry*, *Near Cut*, *Greek Key*, *Dandelion*, *Acorn Burrs*, *N. Cherry*, *Springtime*, *Peacock at the Fountain*, *Peach* and *Singing Birds*.

THE MILLERSBURG CO. — MILLERSBURG, OHIO

As a group, I suppose the Millersburg water pitchers would top the list from a rarities standpoint. Certainly this would be true for the top five.

1. *MORNING GLORY* — green, \$8,500; (also amethyst, \$7,500; marigold, \$6,500). Only one green, 4 amethyst and 3 marigold pitchers are known. A handful of rare tumblers are known.

2. *GAY NINETIES* — green, \$8,000; (also amethyst, \$7,500). One green and 3 amethyst pitchers known. A very few marigold tumblers have turned up but no pitcher. There are also a few rare amethyst tumblers but none in green.

3. *MULTI FRUITS & FLOWERS* — both green and marigold, \$7,500; (also amethyst, \$6,500). One green, 2 marigold and 5 amethyst pitchers are known. Tumblers in all three colors are very rare.

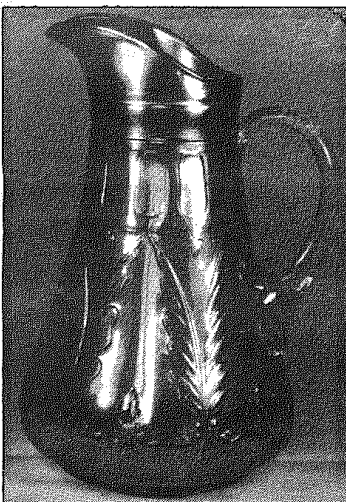
4. *PERFECTION* — both green, and marigold, \$3,500; (also amethyst, \$3,000). Three green, 4 marigold, and 8 or 10 amethyst pitchers are known. Tumblers are rare in all colors.

5. *HOBNAIL* — green, \$2,000; (also marigold, \$1,750; blue, \$1,500; amethyst, \$1,250). Only one green, 2 or 3 blue, 2 or 3 marigold and 5 or 6 amethyst pitchers are confirmed. The tumblers are equally rare in all colors.

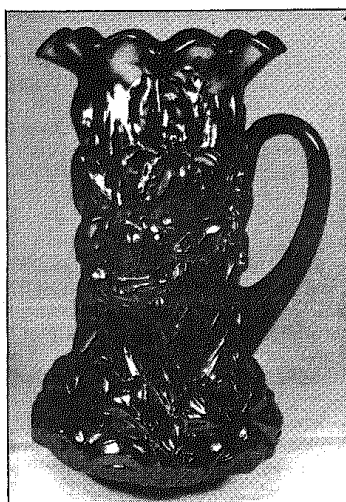
Not many water sets were made by Millersburg. The other known patterns are *Feather & Heart*, *Marilyn*, *Diamond* and *Millersburg Cherry*. They are much less rare than the top five.



"Morning Glory" [Millersburg] — purple, \$8,500.



"Quill" [Dugan - Diamond] — marigold, \$1,200.



"Heavy Iris" [Dugan-Diamond] — purple, \$800.

DUGAN & DIAMOND GLASS COS. — INDIANA, PA.

It has been only recently, due to the research efforts of Bill Heacock, that the contributions of these two companies has been fully appreciated. The Dugan Glass Co. operated at this site from 1904 to 1913 and was followed by the Diamond Glassware Co. which continued to operate until 1931. We usually do not know which of the two companies produced which specific pattern. To confuse the issue further, the Northwood Co. operated at this same factory site but sold out long before the carnival period commenced.

1. **QUILL** — purple, \$2,500; (also marigold, \$1,200). Only 4 or 5 pitchers are known in purple and less than a dozen in marigold.
2. **CIRCLED SCROLL** — purple, \$2,500; (also marigold, \$1,250). To my knowledge only one pitcher is known in purple and some 5 or 6 in marigold.
3. **HARVEST FLOWER** — marigold, \$1,200. Tumblers are known in both amethyst and marigold but no amethyst pitchers have turned up to my knowledge.
4. **HEAVY IRIS** — white, \$1,200; (also purple, \$800; marigold, \$450). Only a half a dozen or so pitchers in white are known. Peach opal reported but not confirmed. This set has been reproduced in purple which hurts.
5. **JEWELLED HEART** — marigold, \$850. A pitcher reported in a dark color but not confirmed. A white tumbler is known but no pitcher.

Other Dugan-Diamond pitchers are *Wreathed Cherry*, *Dahlia*, *Beaded Shell*, *Vineyard*, (known in peach opal), *Stork & Rushes*, *Floral & Grape*, *Rambler Rose* and *Maple Leaf*. It has not been confirmed but the evidence would indicate that *God & Home* is also a Dugan-Diamond product.

IMPERIAL GLASS CO. — BELLAIRE, OHIO

While the Imperial pitchers, except for the *Chatelaine*, may not be as rare as those from some of the other companies, their purple colors with electric iridization are unexcelled.

1. **CHATELAINE** — purple, \$2,250. Some dozen purple pitchers are known. Was made in crystal but no other Carnival colors have surfaced.
2. **FASHION** — purple, \$900; (also smoky, \$450; marigold, \$100). Easily found in marigold but other colors are very difficult.
3. **FLUTE** — purple, \$600; (also blue, \$500; teal green, \$450; marigold, \$300). Even though the purple is the most plentiful, it is usually so electric that it commands a higher price. A tankard pitcher is reported but I have not seen one. There is also a Northwood version of this Flute pattern.
4. **FOUR-SEVENTY-FOUR** — purple, \$600; (also green, \$500; marigold, \$125). Easily found in marigold but only 3 or 4 known in purple and about the same number in green. The pitcher comes in two sizes and also in a milk pitcher.
5. **FILE** — marigold, \$350. The pitcher and tumbler are both hard to find. For some reason, the pitcher

doesn't command a big price and the tumbler will bring about as much as the pitcher.

Other Imperial pitchers that demand recognition are *Field Flower*, *Crab Claw*, *Octagon*, *Robin*, *Diamond Lace*, *Lustre Rose*, *Tiger Lily*, *Imperial Grape* and *Windmill*.

THE CAMBRIDGE GLASS CO. — CAMBRIDGE, OHIO

Most of us associate certain colors with certain companies. It becomes almost a trade-mark of sorts. Of course, there is a substantial overlapping but by and large we associate blue and red with Fenton; aqua opal and the pastels with Northwood; peach opal with Dugan; smoky, amber and clambroth with Imperial.

When we come to Cambridge, we pick up a second characteristic. Not only are nearly all of the Cambridge pieces either marigold or green but the patterns are exclusively intaglio (cut-in), instead of raised as is the case with most other Carnival patterns.

1. **INVERTED FEATHER** — marigold, \$3,500. Only one pitcher is confirmed. It is marigold and is in the Corrother's collection. A purple pitcher reported but not confirmed. A few green and marigold tumblers are known.

2. **INVERTED THISTLE [LATE THISTLE]** — marigold, \$2,500; (also purple, \$2,250). Only 2 or 3 pitchers can be confirmed in marigold and less than a dozen in purple.

3. **INVERTED STRAWBERRY** — green, \$1,500; (also purple, \$1,000; marigold, \$800). Only 3 or 4 green pitchers are known. The marigold pitcher is more rare than the purple but sells for a bit less. Tumblers are found in blue but no blue pitcher.

4. **DOUBLE STAR** — purple, \$600; (also marigold, \$500; green, \$300). The green *Double Star* water set is the only one of all the Cambridge sets that can be readily found. All of the others in any color are very difficult.

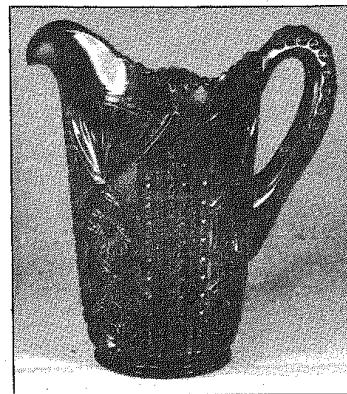
These four patterns are the only carnival pitchers that, to my knowledge, were made in carnival. Many, but not all of the pitchers and tumblers are signed "Near Cut."

U.S. GLASS CO. — PITTSBURGH, PA. AND OTHER SITES

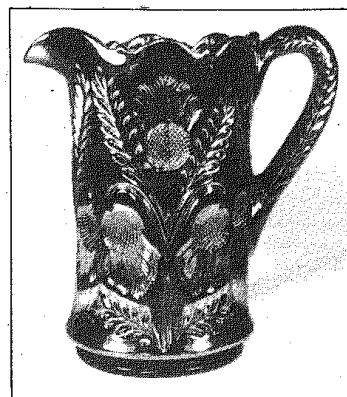
Though much has been written about this company, carnival collectors do not really relate to this factory. This is in spite of the fact that each of the five sets they produced are scarce to very rare. Perhaps one reason for this is the complicated background of the U.S. Glass Co. It was a conglomerate of many companies that operated from many different locations.

1. **FROLICKING BEARS** — green, \$8,500. Three pitchers and four tumblers are known. Ranks at the top of the rarity list.

2. **RISING SUN** — blue, \$1,750; (also marigold, \$650). Four blue tumblers and one blue pitcher are known. It is the "skirted" type pitcher. The marigold pitchers are found in this "skirted" type base as well as on a pedestal base.



"Chatelaine" [Imperial] — purple, \$2,250.



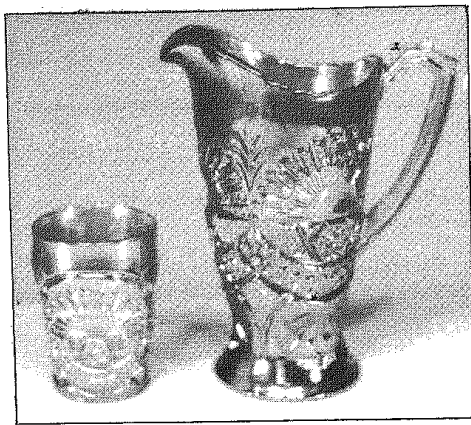
"Inverted Thistle" [Cambridge] — purple, \$2,250.



"Inverted Feather" [Cambridge] — marigold, \$3,500.



"Frolicking Bears" [U.S. Glass] — green, \$8,500.



"Rising Sun," skirted type, [U.S. Glass] — marigold, \$650.



"Palm Beach," [U.S. Glass] — marigold, \$450.



"Aztec," [McKee] — marigold, \$1,200.

3. **COSMOS & CANE** — white, \$1,200; (also marigold, \$500). Very hard to find. Should sell for more.

4. **PALM BEACH** — white, \$600; (also marigold, \$450). The marigold in both the Palm Beach and Cosmos & Cane is on the honey-amber side of the color spectrum rather than a true marigold.

5. **FIELD THISTLE** — marigold, \$150. The pitcher is a bit awkward and often has poor color. While hard to find it does not sell well. A good tumbler will often outsell the pitcher.

That covers the major producers of carnival water pitchers. There are, however, several well known American companies which made limited contributions. We'll take a quick look at some of these pitchers.

The McKee Glass Co. — Jeanette, Pa., made little carnival. Only a single water pitcher in their **AZTEC** pattern is known. A few tumblers, a rose bowl and a sugar and creamer, all in marigold, are also known in this pattern in carnival.

The Jenkins Glass Co. — Kokomo, Ind., made a few water pitchers in a pattern called **DIAMOND & DAISY CUT**. In marigold it will sell for \$250. A few tumblers in marigold can also be found. This pattern has never been a popular one.

FOREIGN PITCHERS

And now let's swing around the world and touch on the carnival water pitchers made by many different countries. To be sure, this foreign production is small when compared with the more than 100 sets produced by the American companies. Nevertheless, many of these pitchers are very desirable and much sought out by collectors both here and abroad.

AUSTRALIA —

[CRYSTAL GLASS CO. - SYDNEY]

1. **BANDED DIAMONDS** — purple, \$1,000; (also marigold, \$750). This is no doubt the best known Australian water pitcher, at least here in the United States. That doesn't say much as very few of these pitchers have ever turned up either here or in Australia. One sold at the Wichita Air Capitol convention in 1982. It brought \$525, which I feel was a real bargain. Tumblers in either color are also rare.

2. **BLOCKS & ARCHES** — marigold, \$150. Not the most imaginative pattern in the world, but hard to find. It resembles and is sometimes confused with the Ranger pattern.

3. **BEADED SPEARS** — marigold, \$250. This set has turned up in

Australia but there is some feeling it could have been imported from England or some other European country.

FINLAND —

[RIIHIMAKI GLASSWORKS]

1. **LATE PANELLED THISTLE** — blue, \$1,500. Only 3 pitchers and 8 or 10 tumblers are known. This is not to be confused with the old Higbee Panelled Thistle pattern that was made in clear pressed glass. No old carnival sets are known in this Higbee pattern but a few sets in new carnival were iridized by Crider. This Late Panelled Thistle pattern has also been referred to as *Alexander Floral* in Marion Quinton-Baxendale's book and as *Grand Thistle* in Bill Edward's latest price guide.

SWEDEN — [EDA GLASSWORKS]

1. **ROSE GARDEN** — blue, \$1,800; (also marigold, \$1,250). I can confirm only one pitcher in each color. I'm sure there are others. No tumblers have turned up to date. Some have felt this was designed as a communion pitcher for religious ceremonies. There is no proof, however, that it was designed for that purpose. Whatever its intended use, it is a beautiful and quality piece of glass.

2. **CURVED STAR [CATHEDRAL]** — blue, \$1,500; (also

marigold, \$1,000). Very few of the pitchers and no tumblers are known. This pattern is best known in the Chalice shape.

MEXICO

[CHRISTALES MEXCANOS]

1. **RANGER** — marigold, \$350. Even though this is an Imperial Company pattern, no carnival pitchers or tumblers are known to have been made. The few carnival pitchers and tumblers that have been found are signed with an "M" inside a "C." This is the logo of this Mexican company and they were no doubt made by this firm. Some have pointed out, however, that Imperial may have made them for Christales. This appears unlikely. Another version of this pattern has been wisely named "Jacobean Ranger" by the tumbler researcher John Britt. This variant is unsigned and was originally made in Czechoslovakia. It was later produced in England. Like the regular Ranger, this Jacobean version has been found only in marigold.

I'm sure you will realize this survey is far from all inclusive. I believe, however, that it does cover the mainstream of carnival water pitchers made not only in America but in countries around the world.



"Late Panelled Thistle," [Finland] — blue, \$1,500.



"Banded Diamonds," [Australian] — marigold, \$750.



"Rose Garden" [Sweden] — marigold, \$1,250.

CARNIVAL GLASS WATER PITCHERS AS ADVERTISED IN BUTLER BROS. CATALOGS.

The ad shown in Photo #1 is from the mid-spring 1911 issue of the Butler Bros. catalog. These are *Fenton* pitchers. From left to right they are *Milady*, *Fluffy Peacock* and *Blackberry Block*. All three patterns are much sought after and bring high prices today. Except for special colors, such as the vaseline and white Blackberry Block, these are not patterns that would be considered top rarities. I find this generally true of all the patterns advertised in these catalogs. It would appear that the ads were successful as these sets are available for determined collectors. I find no ads in these catalogs for the really rare sets.

Photo #2 shows *Northwood's* famous *Grape & Cable* pattern. This water set was made in both a regular size and the tankard size, as shown here. The marigold set shown sold for 65 cents and would sell on today's



Photo #1

market for upwards of \$1,000. In ice green, the pitcher is very rare and will bring some \$3,000.

Photo #3 features an ad from the April, 1912 issue of B.B. and shows two *Millersburg* pitchers. *Feather & Heart* is shown on the left and *Marilyn* is on the right. While this ad

was for the crystal pitchers, both were made extensively in carnival.

Two *Imperial* pitchers were advertised in this same April, 1912 issue. The *Tiger Lily* pattern is on the left in the Photo #4 and *Imperial Grape* on the right. In marigold, these are two of the most available sets in all of carnival.

The pitchers in Photo #5 are *Fenton*. *Lattice and Grape* is on the left and *Apple Tree* is on the right. This ad is from the February, 1924 catalog. This *Lattice & Grape* set first appeared in a 1913 issue where it was priced at 62 cents a set. This ten year period during which this set was offered must have paid off. It can be easily found today and for a modest price.

Cover Photo
"Morning Glory" tankard pitchers by *Millersburg Glass Co.* — Green, amethyst and marigold are the three colors known. These are the rarest of all Carnival water pitchers.



Photo #2

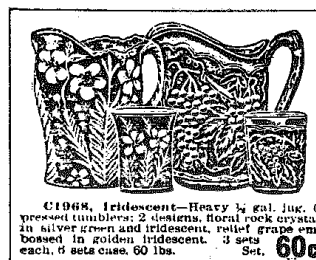


Photo #4



Photo #3



Photo #5